

PART NUMBER

REV.

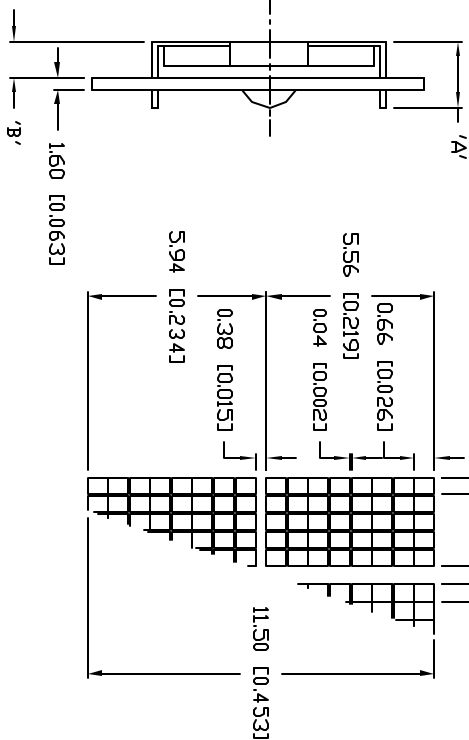
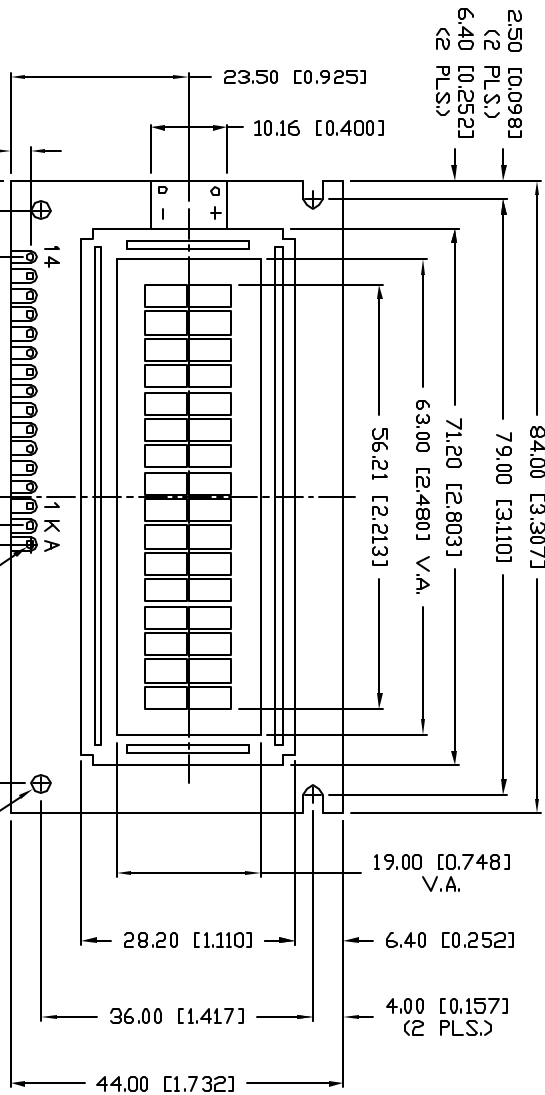
LCM-S01602DSF/G-Y

REV. E.C.N. NUMBER AND REVISION COMMENTS

DATE

TYPE	Q.M.	A	B
WITH BACKLIGHT	12.7	8.1	
NO BACKLIGHT	8.1	4.1	

CHARACTER DETAIL



CAUTION: STATIC SENSITIVE DEVICE
FOLLOW PROPER E.S.D. HANDLING PROCEDURES
WHEN WORKING WITH THIS PART.

*UNLESS OTHERWISE SPECIFIED TOLERANCE IS $\pm 0.25\text{mm}$ ($\pm 0.010''$)

REV.

PART NUMBER

LCM-S01602DSF/G-Y

5.56mm TALL, 5 x 8 DOT MATRIX, 16 x 2 CHARACTER LCD
MODULE, TRANSLUCTIVE, STN YELLOW, 1/16 DUTY, 1/5 BIAS.

CONFIDENTIAL INFORMATION

THE INFORMATION CONTAINED IN THIS DOCUMENT IS THE PROPERTY OF LUMEX INC. EXCEPT AS SPECIFICALLY AUTHORIZED IN WRITING BY LUMEX INC., THE HOLDER OF THIS DOCUMENT SHALL KEEP ALL INFORMATION OR INFORMATION HEREIN CONFIDENTIAL AND SHALL PROTECT SAME IN WHOLE OR IN PART FROM DISCLOSURE AND DISSEMINATION TO ALL THIRD PARTIES.

RELIABILITY NOTE

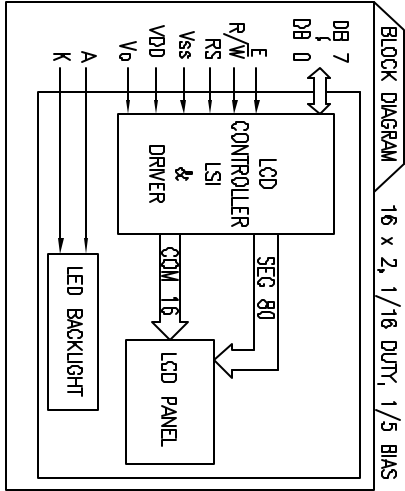
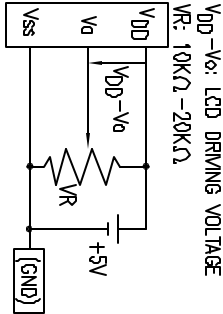
OUR MANY YEARS OF EXPERIENCE DATA ACCUMULATION INDICATE THAT SOLDER HEAT IS A MAJOR CAUSE OF EARLY AND FUTURE FAILURE. PLEASE PAY ATTENTION TO YOUR SOLDERING PROCESS.

LUMEX
INCORPORATED

290 E. ELLEN ROAD
PALATINE, ILLINOIS 60067
PHONE: 1-847-359-2790
WEB: HTTP://WWW.LUMEX.COM

DRAWN BY: CHECKED BY: APPROVED BY: DATE: 3-25-99
SA/BC PAGE: 1 OF 2
SCALE: N/A

PIN CONFIGURATION			FUNCTION	
PIN NO.	SYMBOL	LEVEL		
1	V _{SS}	—	POWER SUPPLY	GND (0V)
2	V _{DD}	—		5V
3	V ₀	—		FOR LCD DRIVE
4	RS	H/L	REGISTER SELECT SIGNAL H: DATA INPUT L: INSTRUCTION INPUT	
5	R/W	H/L	H: DATA READ (MODULE \leftrightarrow MPU) L: DATA WRITE (MODULE \leftrightarrow MPU)	
6	E	H/H \rightarrow L	ENABLE DATA BUS-SOFTWARE SELECTABLE 4 OR 8 BIT MODE.	
7~14	DB0~DB7	H/L		
A	A	—	ANODE	LED BACKLIGHT
K	K	—	CATHODE	LED BACKLIGHT



V_{DD}=4.7V to 5.3V, T_A=25°C

ELECTRICAL CHARACTERISTICS			V _{DD} =4.7V to 5.5V, T _A =25°C				
ITEM	SYMBOL	CONDITION	STANDARD VALUE			UNIT	
			MIN.	TYP.	MAX.		
SUPPLY VOLTAGE FOR LOGIC	V _{DD} -V _{SS}	—	—	5.0	—	V	
SUPPLY CURRENT FOR LOGIC	I _{DD}	V _{DD} =5V	—	2.0	3.0	mA	
INPUT VOLTAGE	V _{IH} V _{IL}	—	2.2	—	4.7	V	
		—	0	—	0.6	V	
OUTPUT VOLTAGE	V _{OH} V _{OL}	—	2.4	—	—	V	
		—	—	—	0.4	V	
VOLTAGE	V _I	I _F =160mA	—	4.2	4.6	V	
	CURRENT	I _F	—	160	—	mA	
*LED BACKLIGHT	POWER CONSUMPTION	P _D	—	660	—	mW	
	LUMINOUS COLOR	L	I _F =160mA	70	—	cd/m ²	
	COLOR	—	—	—	—	nm	

*ONLY APPLIES TO MODULES WITH BACKLIGHT

REV.	PART NUMBER
	LCM-S01602DSF/G-Y
	5.56mm TALL, 5 x 8 DOT MATRIX, 16 x 2 CHARACTER LCD MODULE, TRANSPARENT, STN YELLOW, 1/16 DUTY, 1/5 BIAS.

CONFIDENTIAL INFORMATION
THE INFORMATION CONTAINED IN THIS DOCUMENT IS THE PROPERTY OF LUMEX INC. EXCEPT AS SPECIFICALLY AUTHORIZED IN WRITING BY LUMEX INC., THE HOLDER OF THIS DOCUMENT SHALL KEEP ALL INFORMATION CONTAINED HEREIN CONFIDENTIAL AND SHALL PROTECT SAME IN WHOLE OR IN PART FROM DISCLOSURE AND DISSEMINATION TO ALL THIRD PARTIES.

RELIABILITY NOTE
OUR MANY YEARS OF EXPERIENCE DATA ACCUMULATION INDICATE THAT SOLDER HEAT IS A MAJOR CAUSE OF EARLY AND FUTURE FAILURE. PLEASE PAY ATTENTION TO YOUR SOLDERING PROCESS.

ABSOLUTE MAXIMUM RATINGS				
ITEM	SYMBOL	TEST CONDITION	MIN	MAX
SUPPLY VOLTAGE FOR LOGIC	V _{DD} -V _{SS}	T _a =25°C	4.7	5.3
SUPPLY VOLTAGE FOR LCD DRIVE	V _{DD} -V ₀	—	4.2@50°C	4.8@0°C
INPUT VOLTAGE	V _I	T _a =25°C	V _{SS}	V _{DD}
OPERATING TEMPERATURE	T _{OPR}	LCM-S	0	50
STORAGE TEMPERATURE	T _{STG}	LCM-S	-20	70

*UNLESS OTHERWISE SPECIFIED TOLERANCE IS ±0.25mm (±0.010")

DRAWN BY: CHECKED BY: APPROVED BY:				DATE: 3-25-99
SA/BC				PAGE: 2 OF 2
SCALE: N/A				



290 E. HELLEN ROAD
PALATINE, ILLINOIS 60067
PHONE: 1-847-359-2790
WEB: HTTP://WWW.LUMEX.COM

Mouser Electronics

Authorized Distributor

Click to View Pricing, Inventory, Delivery & Lifecycle Information:

Lumex:

[LCM-S01602DSF/G-Y](#)