

MITSUBISHI PHOTO DIODES

PD7XX26 SERIES

InGaAs PIN PHOTO DIODES

PD793D26

DESCRIPTION

PD793D26 Series are InGaAs pin photodiodes which has a sensitive area of $\phi 20\text{mm}$. PD7XX26 is suitable for receiving the light having a wavelength band of 1000 to 1600nm. This photodiode features high-speed response and a high quantum efficiency, and is suitable for the light receiving elements for optical fiber communication systems.

Feature

- $\phi 20\text{mm}$ active diameter
- 1000~1600nm wavelength band
- Small dark current
- High speed response
- High quantum efficiency

APPLICATION

Receiver for optical communication system

ABSOLUTE MAXIMUM RATINGS

| Symbol | Parameter | Conditions | Ratings | Unit |
|------------------|---------------------|------------|------------|------|
| V _r | Reverse voltage | - | 20 | V |
| I _r | Reverse current | - | 500 | mA |
| I _f | Forward current | - | 2 | mA |
| T _c | Case temperature | - | -40 ~ +85 | °C |
| T _{stg} | Storage temperature | - | -40 ~ +100 | °C |

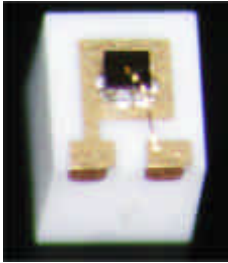
ELECTRICAL / OPTICAL CHARACTERISTICS (T_c=25°C)

| Symbol | Parameter | Test conditions | Limits | | | Unit |
|----------------|-------------------|---|--------|------|------|------|
| | | | Min. | Typ. | Max. | |
| C _t | Capacitance | V _r =5V, f=1MHz | - | 0.16 | 0.30 | pF |
| I _d | Dark current | V _r =5V | - | 0.5 | 2.0 | nA |
| R | Responsivity | V _r =5V, λ =1300nm | 0.75 | 0.85 | - | A/W |
| f _c | Cut-off frequency | V _r =5V, λ =1300nm, RL=50W, -3dB | 8 | 10 | - | GHz |

PD7XX26 SERIES

OUTLINE DRAWINGS

PD793D26



 Alumina submount

