

PB6B2FM5M2CAL00

✓ ACTIVE

ALCOSWITCH | ALCOSWITCH PB6

TE Internal #: 2329383-8

General Purpose Push Button Switch, Single Pole - Single Throw Configuration (Pole-Throw), Single Actuator, Flush Actuator, ALCOSWITCH PB6

[View on TE.com >](#)



Switches > Push Button Switches



Configuration (Pole-Throw): **Single Pole - Single Throw**

Push Button Switch Product Type: **General Purpose Push Button Switch**

Number of Actuators: **Single**

Actuator Profile: **Flush**

Bushing Style: **Threaded**

Features

Product Type Features

Switch Connection Type	Wire Lugs
Push Button Switch Product Type	General Purpose Push Button Switch
Illuminated	Without
Actuator Style	Round Actuator

Configuration Features

Configuration (Pole-Throw)	Single Pole - Single Throw
Number of Actuators	Single
Snap Action	Without
Support Bracket	Without
Switch Feedback Type	Auditory
Operating Function	Momentary

Electrical Characteristics

Contact Current Rating	.12 A
Operating Voltage Range	50 VDC



Body Features

Case Material	Diallyl Phthalate (DAP)
Actuator Material	Polyamide
Product Orientation	Vertical
Actuator Force	306 – 612 g[10.8 – 21.6 oz]
Actuator Profile	Flush
Bushing Style	Threaded
Bushing Thread Size	M12 x .75
Actuator Color	Yellow

Contact Features

Switch Contact Plating Material	Gold over Silver
---------------------------------	------------------

Housing Features

Process Sealed	Yes
----------------	-----

Industry Standards

IP Rating	IP68
-----------	------

Packaging Features

Packaging Method	Loose Piece
------------------	-------------

Product Compliance

For compliance documentation, visit the product page on TE.com>

EU RoHS Directive 2011/65/EU	Compliant with Exemptions
EU ELV Directive 2000/53/EC	Compliant with Exemptions
China RoHS 2 Directive MIIT Order No 32, 2016	有害物质含量超出标准 Restricted Substance(s) Above Threshold
EU REACH Regulation (EC) No. 1907/2006	Current ECHA Candidate List: JUNE 2025 (250) Candidate List Declared Against: JAN 2025 (247) SVHC > Threshold: Pb (4% in Component Part) <b>Article Safe Usage Statements:</b> Do not eat, drink or smoke when using this product. Wash thoroughly after handling. Recycle if possible and dispose of the article by following all applicable governmental regulations relevant to your geographic location.
Halogen Content	Low Halogen - Br, Cl, F < 900 ppm per homogenous material. Also BFR/CFR/PVC Free
Solder Process Capability	Not reviewed for solder process capability



Product Compliance Disclaimer

This information is provided based on reasonable inquiry of our suppliers and represents our current actual knowledge based on the information they provided. This information is subject to change. The part numbers that TE has identified as EU RoHS compliant have a maximum concentration of 0.1% by weight in homogenous materials for lead, hexavalent chromium, mercury, PBB, PBDE, DBP, BBP, DEHP, DIBP, and 0.01% for cadmium, or qualify for an exemption to these limits as defined in the Annexes of Directive 2011/65/EU (RoHS2). Finished electrical and electronic equipment products will be CE marked as required by Directive 2011/65/EU. Components may not be CE marked. Additionally, the part numbers that TE has identified as EU ELV compliant have a maximum concentration of 0.1% by weight in homogenous materials for lead, hexavalent chromium, and mercury, and 0.01% for cadmium, or qualify for an exemption to these limits as defined in the Annexes of Directive 2000/53/EC (ELV). Regarding the REACH Regulation, the information TE provides on SVHC in articles for this part number is based on the latest European Chemicals Agency (ECHA) 'Guidance on requirements for substances in articles' posted at this URL: <https://echa.europa.eu/guidance-documents/guidance-on-reach>

Compatible Parts



TE Part # 2329361-3  
PB OFF/ON RC YLW M1 TERM IP68 500MM L



TE Part # 2329387-4  
PB OFF/ON FC BLK M1 TERM GRE LED IP68



TE Part # 2329359-1  
PN OFF/ON HC BLK M1 TERM IP68 500MM LHS

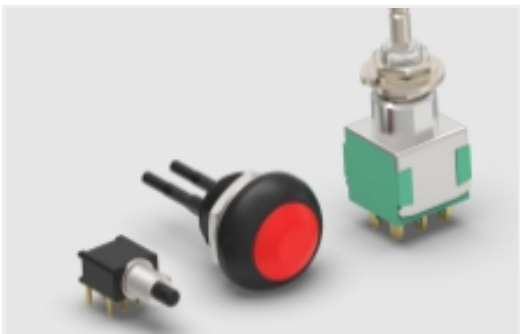


TE Part # 2329359-2  
PN OFF/ON HC RED M1 TERM IP68 500MM LHS



TE Part # 2329383-3  
PB OFF/ON FC YLW M1 TERM. IP68

Also in the Series | ALCOSWITCH PB6



General Purpose Push Button Switches (165)



Push Button Switches(165)

Customers Also Bought





TE Part #NB10026001  
ATUM-24/6-0-40MM



TE Part #454100-000  
D-406-0002



TE Part #CAR3SC68  
CAR RECPT DIN9680 3way, IP68



TE Part #HDP26-24-31SE-L017  
PLG, 31P, BLK, E, RNG, 16, S



TE Part #1-480277-0  
09P CMNL CAP HSG P/M NATL



TE Part #1-1414122-0  
V23136J1004X050-EV-CBOX



TE Part #1416010-1  
V23132A2001B200-EV-CBOX



TE Part #1609133-4  
6ESRMC2=F6989



TE Part #2286003-1  
DT06-2S-SDT-CE27-2POS,CE,SOC.  
HSG



TE Part #1634201-6  
PRFDB1-16F-BY000

Documents

Product Drawings

PB OFF/ON FC YLW M2 TERM. IP68

English

CAD Files

3D PDF

3D

Customer View Model

ENG\_CVM\_CVM\_2329383-8\_A.2d\_dxf.zip

English

Customer View Model

ENG\_CVM\_CVM\_2329383-8\_A.3d\_igs.zip

English

Customer View Model

ENG\_CVM\_CVM\_2329383-8\_A.3d\_stp.zip

English

By downloading the CAD file I accept and agree to the [Terms and Conditions](#) of use.