

Housing - HC-EVO-B24-SHWD-2SSM25-PLRBK - 1421461

Please be informed that the data shown in this PDF Document is generated from our Online Catalog. Please find the complete data in the user's documentation. Our General Terms of Use for Downloads are valid (<http://phoenixcontact.com/download>)




Box mounting bases B24, with double locking latch, material: PA, cable outlets: 2, lateral, height: 84 mm, cable gland: none, gland: no, 2x M25, Standard, including 2x reducing adapter

Why buy this product

- ✓ Flexible cable outlet direction, lateral or straight
- ✓ Lower costs than metal version
- ✓ Labeling option using 9 x 20 mm marking label
- ✓ Low weight
- ✓ Lower risk of condensation
- ✓ Both contact insert PE sheets are connected by means of a metal frame integrated in the sleeve housing
- ✓ Metal inlays ensure leading PE contact with angled plugs
- ✓ Completely corrosion-resistant
- ✓ Halogen-free plastic

RoHS

Key Commercial Data

| | |
|--------------|---------------------------------------------------------------------------------------------------------|
| Packing unit | 1 STK |
| GTIN |  4 055626 265049 |
| GTIN | 4055626265049 |

Technical data

Dimensions

| | |
|--------|--------|
| Height | 84 mm |
| Width | 57 mm |
| Length | 144 mm |

Ambient conditions

| | |
|----------------------------------------|-------------------|
| Degree of protection of housing (IP) | IP66 |
| Degree of protection of housing (NEMA) | 12 (UL 50e) |
| Ambient temperature (operation) | -40 °C ... 125 °C |

Housing - HC-EVO-B24-SHWD-2SSM25-PLRBK - 1421461

Technical data

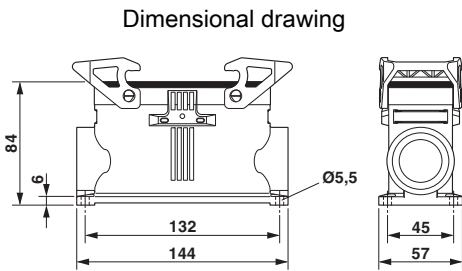
General

| | |
|----------------------------------------|---------------------------------------------------------------------------------------------------------|
| Note | For contact inserts HC-B24, BB46, D64, DD108, M, K, HV10-I-PT, HV 10-E...C |
| Size | B24 |
| Housing type | Box mounting bases |
| Color | black |
| Locking type | with double locking latch |
| No. of cable outlets | 2 |
| Cable outlet | lateral |
| Screw connection | none |
| Type of the screw connection | 2x M25 |
| Housing material | PA |
| Seal material | NBR |
| Material lock | PA |
| Flammability rating according to UL 94 | V0 |
| Assembly instructions | Two plastic reductions M40 to M25 are provided |
| Connection | One of the two openings for the screw connections is sealed but can be broken open using a screwdriver. |

Standards and Regulations

| | |
|----------------------------------------|----|
| Flammability rating according to UL 94 | V0 |
|----------------------------------------|----|

Drawings



Dimensional drawing

Approvals

Approvals

Approvals

EAC / GL

Ex Approvals

Housing - HC-EVO-B24-SHWD-2SSM25-PLRBK - 1421461

Approvals

Approval details

| | | | |
|-----|-----------------------------------------------------------------------------------|---------------------------------------------------------------------------|--------------------------|
| EAC |  | | RU C- DE.AI30.B.01102 |
| GL |  | http://exchange.dnv.com/tari/ | 6196614 HH |

Phoenix Contact 2018 © - all rights reserved
<http://www.phoenixcontact.com>

PHOENIX CONTACT GmbH & Co. KG
Flachsmarktstr. 8
32825 Blomberg
Germany
Tel. +49 5235 300
Fax +49 5235 3 41200
<http://www.phoenixcontact.com>