

# XLP 16-bit Energy Harvesting Development Kit

## Rapid Energy Harvester Prototyping

The XLP 16-bit Energy Harvesting Development Kit is a true development platform for realizing energy harvesting applications. It is based on Microchip's PIC® MCUs with nanoWatt XLP Technology and Cymbet's EVAL-08 Solar Energy Harvester.

## Benefits of XLP Technology

- Sleep Currents below 20 nA
- Brown-out Reset down to 50 nA
- Watch-dog Timer down to 220 nA
- Real-Time Clock/Calendar down to 470 nA
- Run Currents down to 50 µA/MHz

Powered only by light, the XLP kit enables rapid prototyping of low power applications such as RF sensors, temperature/environmental sensors, utility meters, remote controls and security sensors to name just a few.

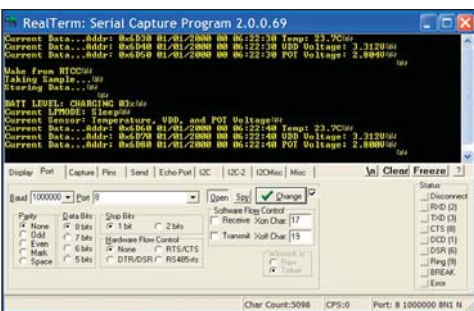
## Rapid Energy Harvester Prototyping

The development board portion of the kit features on-board temperature sensors, data EEPROM, potentiometer, watch crystal, LEDs and expansion connector for PICtail™ modules. Supported PICtail module options include: RF, SD/MMC Cards and more.

## Solar Energy Harvester

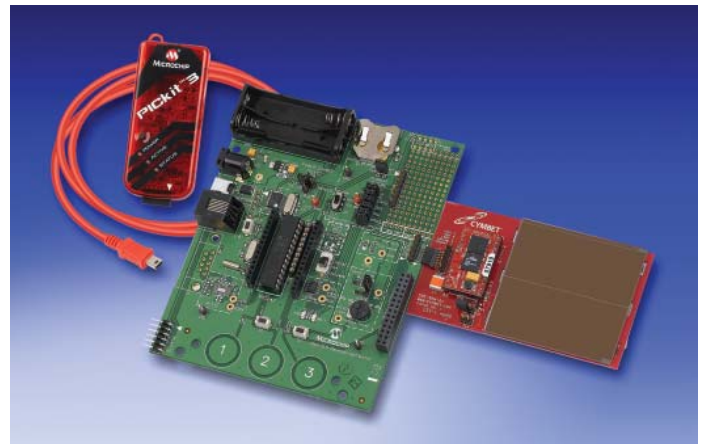
The power for the kit is supplied by Cymbet's EVAL-08 Solar Energy Harvester. The harvester features a high-efficiency solar panel suitable for use with indoor or outdoor light. The harvester captures, manages and stores energy in two Cymbet EnerChip™ thin-film rechargeable energy storage devices. The EnerChips supply energy to the XLP development board when light is not available.

## Energy Conscious Software



Power condition and capacity are monitored by the PIC24F using Energy Conscious software algorithms developed by Microchip and Cymbet.

The monitored information can be reported to the PC user interface via a USB connection. This allows for experimentation and balancing of energy collection vs. energy use, maximizing the benefits of the harvested energy.



## Programming & Debugging

For software development and programming, the kit includes the PICkit™ 3 programmer/debugger for use with the Microchip's free MPLAB® Integrated Development Environment.

## Kit Features

- Solar Energy Harvester with EnerChip storage devices providing backup power
- Individual disable jumpers for board components such as temperature sensors, LEDs, EEPROM and potentiometer thereby removing unwanted standby current.
- Expansion PICtail connector with MCU controlled power supply
- Prototyping area for adding additional sensors and circuits
- PICkit 3 Programmer/Debugger and board level connector for application software development
- PIC24F16KA102 eXtreme Low Power MCU with 20 nA sleep currents (Can also be used with PIC24FJ64GA102)
- UART to USB bridge for use in prototyping and PC communication
- Energy Conscious software reports charge status as a percentage and charge state (Charging or Discharging EnerChips)

## What's Included

- Cymbet Eval-08 solar energy harvesting board and cable
- XLP 16-bit development board pre-loaded with Energy Conscious program
- PIC24F16KA102 microcontroller
- PICkit 3 programmer/debugger
- USB cables
- XLP 16-bit Energy Harvesting Development Kit user guide
- PC-based user interface program
- Quick Start Guide



**MICROCHIP**

Microchip Technology Incorporated

## Ordering Information

- Please visit [www.microchip.com/EnergyHarvesting](http://www.microchip.com/EnergyHarvesting) for ordering information
- Microchip part number: DV164133

## Important Links

Visit the XLP design center at [www.microchip.com/XLP](http://www.microchip.com/XLP) for:

- More XLP development tools
- Low power app notes, case studies, tips & tricks and webinars
- Complete list of XLP MCUs and datasheets
- Videos showing XLP performance

## Support

Microchip is committed to supporting its customers in developing products faster and more efficiently. We maintain a worldwide network of field applications engineers and technical support ready to provide product and system assistance. In addition, the following service areas are available at [www.microchip.com](http://www.microchip.com):

- **Support** link provides a way to get questions answered fast: <http://support.microchip.com>
- **Sample** link offers evaluation samples of any Microchip device: <http://sample.microchip.com>
- **Forum** link provides access to knowledge base and peer help: <http://forum.microchip.com>
- **Buy** link provides locations of Microchip Sales Channel Partners: [www.microchip.com/sales](http://www.microchip.com/sales)

## Sales Office Listing

### AMERICAS

#### Atlanta

Tel: 678-957-9614

#### Boston

Tel: 774-760-0087

#### Chicago

Tel: 630-285-0071

#### Cleveland

Tel: 216-447-0464

#### Dallas

Tel: 972-818-7423

#### Detroit

Tel: 248-538-2250

#### Kokomo

Tel: 765-864-8360

#### Los Angeles

Tel: 949-462-9523

#### Santa Clara

Tel: 408-961-6444

#### Toronto

Mississauga, Ontario

Tel: 905-673-0699

### EUROPE

#### Austria - Wels

Tel: 43-7242-2244-39

#### Denmark - Copenhagen

Tel: 45-4450-2828

#### France - Paris

Tel: 33-1-69-53-63-20

#### Germany - Munich

Tel: 49-89-627-144-0

#### Italy - Milan

Tel: 39-0331-742611

#### Netherlands - Drunen

Tel: 31-416-690399

#### Spain - Madrid

Tel: 34-91-708-08-90

#### UK - Wokingham

Tel: 44-118-921-5869

### ASIA/PACIFIC

#### Australia - Sydney

Tel: 61-2-9868-6733

#### China - Beijing

Tel: 86-10-8528-2100

#### China - Chengdu

Tel: 86-28-8665-5511

#### China - Chongqing

Tel: 86-23-8980-9588

#### China - Hong Kong SAR

Tel: 852-2401-1200

#### China - Nanjing

Tel: 86-25-8473-2460

#### China - Qingdao

Tel: 86-532-8502-7355

#### China - Shanghai

Tel: 86-21-5407-5533

#### China - Shenyang

Tel: 86-24-2334-2829

#### China - Shenzhen

Tel: 86-755-8203-2660

#### China - Wuhan

Tel: 86-27-5980-5300

#### China - Xiamen

Tel: 86-592-2388138

#### China - Xian

Tel: 86-29-8833-7252

#### China - Zhuhai

Tel: 86-756-3210040

### ASIA/PACIFIC

#### India - Bangalore

Tel: 91-80-3090-4444

#### India - New Delhi

Tel: 91-11-4160-8631

#### India - Pune

Tel: 91-20-2566-1512

#### Japan - Yokohama

Tel: 81-45-471- 6166

#### Korea - Daegu

Tel: 82-53-744-4301

#### Korea - Seoul

Tel: 82-2-554-7200

#### Malaysia - Kuala Lumpur

Tel: 60-3-6201-9857

#### Malaysia - Penang

Tel: 60-4-227-8870

#### Philippines - Manila

Tel: 63-2-634-9065

#### Singapore

Tel: 65-6334-8870

#### Taiwan - Hsin Chu

Tel: 886-3-6578-300

#### Taiwan - Kaohsiung

Tel: 886-7-536-4818

#### Taiwan - Taipei

Tel: 886-2-2500-6610

#### Thailand - Bangkok

Tel: 66-2-694-1351

7/21/09



**MICROCHIP**  
[www.microchip.com/XLP](http://www.microchip.com/XLP)

Visit our web site for additional product information and to locate your local sales office.

Microchip Technology Inc. • 2355 W. Chandler Blvd. • Chandler, AZ 85224-6199

**Microcontrollers • Digital Signal Controllers • Analog • Memory • Wireless**

Information subject to change. The Microchip name and logo, the Microchip logo, MPLAB and PIC are registered trademarks of Microchip Technology Incorporated in the U.S.A. and other countries. PICtail and PICkit are trademarks of Microchip Technology Incorporated in the U.S.A. and other countries. All other trademarks mentioned herein are property of their respective companies. © 2010, Microchip Technology Incorporated. All Rights Reserved. Printed in the U.S.A. 7/10 DS39978B



# Mouser Electronics

Authorized Distributor

Click to View Pricing, Inventory, Delivery & Lifecycle Information:

[Microchip:](#)

[DV164133](#)