

## A system with great stability

The 450 Shelving System consists essentially of two parts: shelves and posts. Thanks to the extremely robust construction, each section can be assembled entirely without the use of cross-bracing. The shelves are fitted using just a single screw and bracket per corner – it couldn't be simpler!

Start with a single section, then supplement this with two additional posts and some shelves – now you have two sections. In principle, your solution is infinitely expandable. The more you build on, the more stable will be your shelving.

If you combine the shelving system with its associated shelf bins, you can make optimum use of your space.

The shelf bins have handles which make them easy to carry and move around. They are also equipped with stop edges, so they can be pulled all the way out without falling out of the shelving.

If you equip your shelf bins with dividers, you can sort and label the contents of each compartment clearly.

The partitions are rounded at the base, making it is easy to get hold of even the smallest items. You can also mount a front on each of the bins, which will protect the contents extra well and make the drawer easy to label clearly.

raaco has developed several different shelving systems. Before making your choice, you should consider how much space your shelf bins should be able to accommodate.



## Shelf 90-31



Item no.	Description	Size (HxWxD,mm)	Colour	Qt
125543	Shelf, 310 mm deep. (Pack of 3). Load capacity 100 kg per shelf, weight evenly distributed. (Safety factor 2).	36 x 885 x 310	Galvanized	3
118828	Shelf, 310 mm deep. (Pack of 4). Load capacity 100 kg per shelf, weight evenly distributed. (Safety factor 2).	36 x 885 x 310	Galvanized	4
118835	Shelf, 310 mm deep. (Pack of 5). Load capacity 100 kg per shelf, weight evenly distributed. (Safety factor 2).	36 x 885 x 310	Galvanized	5
118071	Shelf, 310 mm deep. (Pack of 6). Load capacity 100 kg per shelf, weight evenly distributed. (Safety factor 2).	36 x 885 x 310	Galvanized	6

## Shelf 90-40



Item no.	Description	Size (HxWxD,mm)	Colour	Qt
118842	Shelf, 400 mm deep. (Pack of 3). Load capacity 100 kg per shelf, weight evenly distributed. (Safety factor 2).	36 x 885 x 400	Galvanized	3
118859	Shelf, 400 mm deep. (Pack of 4). Load capacity 100 kg per shelf, weight evenly distributed. (Safety factor 2).	36 x 885 x 400	Galvanized	4
126182	Shelf, 400 mm deep. (Pack of 5). Load capacity 100 kg per shelf, weight evenly distributed. (Safety factor 2).	36 x 885 x 400	Galvanized	5
118088	Shelf, 400 mm deep. (Pack of 6). Load capacity 100 kg per shelf, weight evenly distributed. (Safety factor 2).	36 x 885 x 400	Galvanized	6



## 1000 Post

Item no.	Description	Size (HxWxD,mm)	Colour	Qt
136907	2 uprights with 1 m height, 2 units can be connected to a 2 m pole.	1000 x 31 x 31	Galvanized	2
136853	4 uprights with 1 m height, 2 units can be connected to a 2 m pole.	1000 x 31 x 31	Galvanized	4



## Shelf Bin 4-800

Item no.	Description	Size (HxWxD, mm)	Colour	Qt
136693	Shelf drawer for 310 mm shelf (type 9031). Made of polypropylene (PP).	100 x 280 x 381	raaco blue	12



## Divider 4-800 large

Item no.	Description	Size (HxWxD, mm)	Colour	Qt
107617	(Bag of 12).	79 x 317 x 8	Clear	12



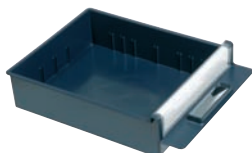
## Divider 4-800 medium

Item no.	Description	Size (HxWxD, mm)	Colour	Qt
108003	(Bag of 24).	77 x 128 x 20	Clear	12



## Divider 4-800 small

Item no.	Description	Size (HxWxD, mm)	Colour	Qt
108010	(Bag of 36).	77 x 84 x 20	Clear	12



## Front 4-800/label

Item no.	Description	Size (HxWxD, mm)	Colour	Qt
107600	Front plate/label for 4-800 shelf drawer (Bag of 6).	50 x 260 x 1	Clear	8