

PRODUCT NUMBER

6 4 9 9 1 - X X X - X X X X X LF

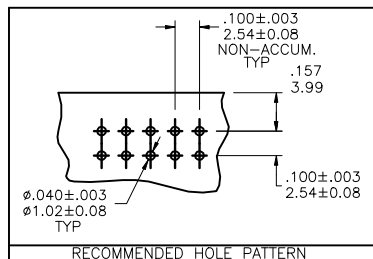
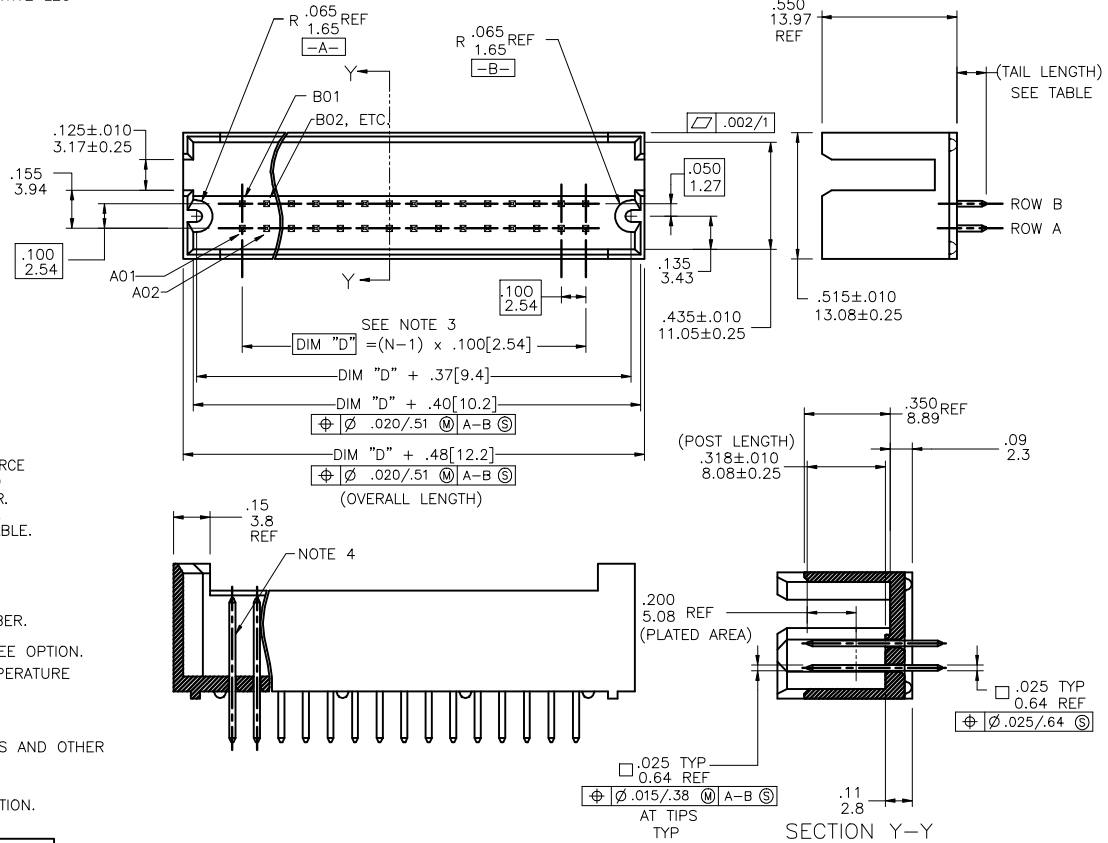
PLATING
NOTE 12

S=15μ" [0.38μm] GOLD/GXT
ON CONTACT AREA
100μ" [2.54μm] PURE TIN
ON TAIL
G=30μ" [0.76μm] GOLD/GXT
ON CONTACT AREA
100μ" [2.54μm] PURE TIN
ON TAIL

STYLE	TAIL LENGTH
3	.090/2.29
4	.120/3.05

POSITIONS PER ROW
05 TO 50

- ① HOUSING MAT'L: HIGH TEMPERATURE THERMOPLASTIC. UL94V-0
COLOR: NATURAL
- ② PIN MATERIAL: PHOSPHOR-BRONZE
- ③ TO DETERMINE DIMENSION
N= NUMBER OF POSITONS PER ROW
EXAMPLE: 10 POS., (N-1) X .100/2.54=.900/22.87
- ④ 3LBS./1.36 KG MIN. RETENTION IN EITHER DIRECTION.
5. PACKAGED IN TRAYS.
- ⑥ RETENTIVE LEG:
5LB/2.3KG MAX INSERTION FORCE AND .25LB./1KG MIN RETENTION FORCE
PER RETENTIVE PIN USING .062/1.57 THICK CIRCUIT BOARD AND RECOMMENDED
HOLE PATTERN. RETENTIVE LOCATION AT THE DISCRETION OF THE MANUFACTURER.
RETENTION IS TWO PINS PER PART ADJACENT TO ONE ANOTHER.
OMIT FROM PRODUCT NUMBER IF THIS FEATURE IS NOT APPLICABLE.
7. UNDER PLATING 50μ"/1.27μm Ni.
- ⑧ FOR POLARIZATION SPECIFY POSITION NUMBER
(e.i., A03=ROW A POS. 3) TO OMIT PIN
IF FEATURE IS NOT APPLICABLE, REMOVE FROM PRODUCT NUMBER.
- ⑨ ADD "LF" SUFFIX AT THE END OF PART NUMBER FOR LEAD FREE OPTION.
10. THE HOUSING WILL WITHSTAND EXPOSURE TO 260°C PEAK TEMPERATURE
FOR 15 SECONDS IN A WAVE SOLDER APPLICATION WITH A 1.5mm
MINIMUM THICK CIRCUIT BOARD. SEE APPLICATION NOTES/PROCEDURES
IF THEY ARE AVAILABLE.
- ⑪ IF "LF" P/N THE PRODUCT MEETS EUROPEAN UNION DIRECTIVES AND OTHER
COUNTRY REGULATION AS DESCRIBED IN GS-22-008.
- ⑫ PLATING OPTIONS:
MAY BE EITHER GOLD OR GXT PLATED AT MANUFACTURER'S OPTION.



mat'l. code NOTES 1 & 2		surface ISO 1302	tolerance ISO 406 ISO 1101	projection	product family HEADER
lir	ecn no	dr	date	tolerances unless otherwise specified	title
A	V92814	DAI	8/24/99	linear	.100/2.54cc GUIDE PIN (SLOTTED) SHROUDED VERTICAL HEADER
B	V11526	DAI	5/21/01	0°±2'	scale 1:1
C	V212895	TAB	1/09/03	linear	INCH/MM
D	M05-0089	MHT	5/20/05	dr	D. INGRAM 6/02/99
E	M07-0116	AGS	2/19/07	engr	H. SUNDY 7/21/99
F	M09-0059	MHT	4/16/09	chr	H. SUNDY 7/21/99
G	M09-0154	MHT	9/10/09	appd	H. SUNDY 7/21/99
sheet	revision	G			
index	sheet	1			

FCI
64991
A3
Product Customer Drawing

