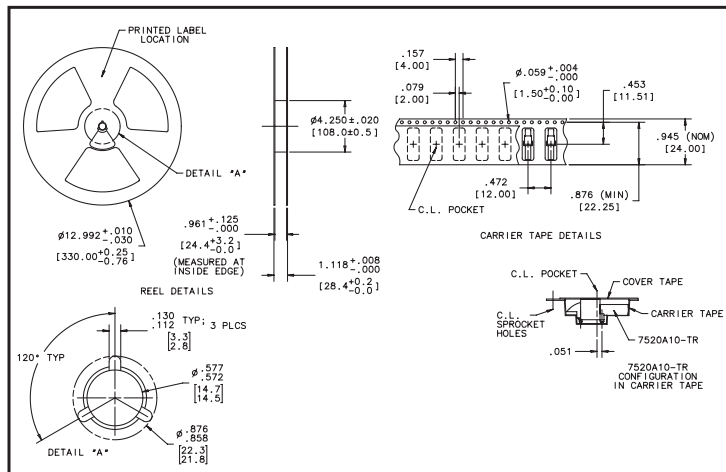




## 7520A10 SMD Bright\*Pipe™ Optical Lightpipes

### DESCRIPTION AND FEATURES

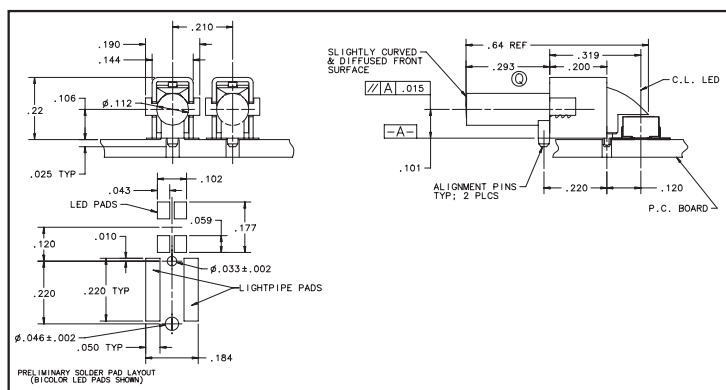


- Eliminates mixed technology PC board processing.
- EMI/RFI protection for PCB mounted components.
- Compatible with automatic pick & place equipment
- Compatible with modern infrared soldering processes.
- Packaged on 24mm tape, 7" or 13" reels per EIA-481-2.
- Material meets UL94HB flammability rating.
- Uses LEDs designed specifically for surface mounting.

U.S. Patents pending.

#### NOTES:

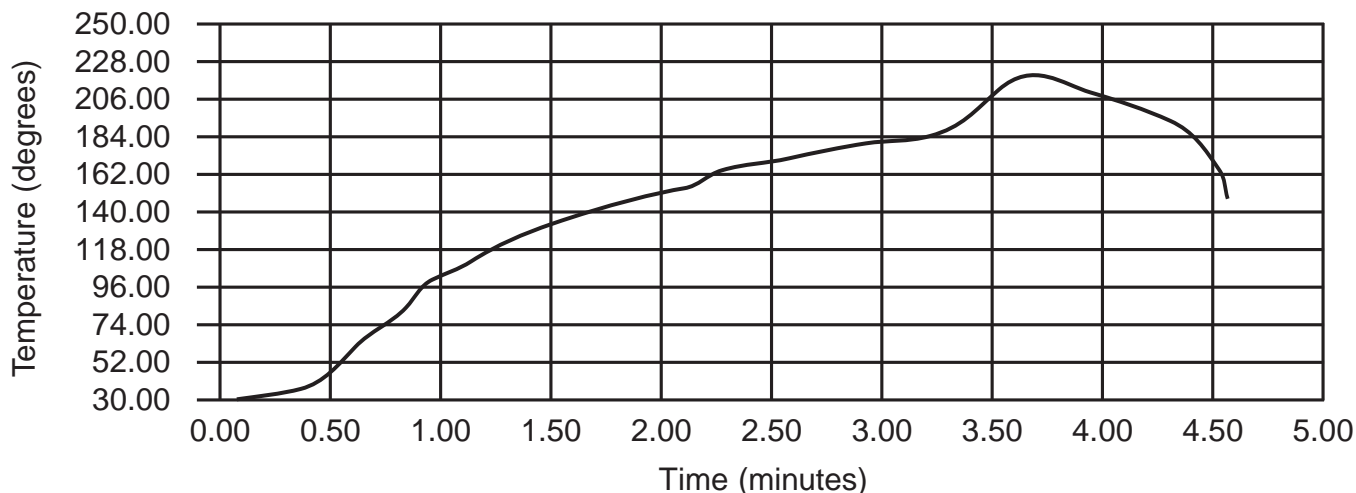
1. SMT Lightpipe component designed to withstand standard IR reflow soldering profile.
2. LED lightsource to be a separate component.
3. Lightsource: SMT LED (CML #7016X Series).



PART NUMBER	PACKAGING	QUANTITY
7520A10	Bulk	100 per bag
7520A10-TR	Tape and Reel	700 per reel

### SMD Light Pipe Solder Profile

Melting point for 63/37 Tin-Lead solder paste: 183° C



The model numbers listed above are standard off the shelf parts, for the user who may have a requirement calling for various color/electrical specifications, a part number can be determined by calling the factory.

Chicago Miniature Lamp reserves the right to make specification revisions that enhance the design and/or performance of the product.