

PRODUCT NUMBER

98417-XXX-XX-XXXLF

LEAD FREE
RoHS COMPATIBLE, NOTE 7

POLARIZATION (SEE NOTE 6)

PACKAGING OPTION, NOTE 5.

TOTAL NB OF POSITIONS, 06 TO 50.

PLATING

G = 0.76µm GOLD/GXT
ON CONTACT AREA
2.0µm MATTE TIN
ON TAILS.

S = 0.38µm GOLD/GXT
ON CONTACT AREA
2.0µm MATTE TIN
ON TAILS.

T = 2.0-6.0µm FULL MATTE TIN

1.27µm Ni MIN UNDERLAYER

NOTES:

1. MATERIAL HOUSING: HIGH TEMP. THERMOPLASTIC LCP
UL 94V-0, COLOR CREAM, MEETS GWT 850°C-960°C.
2. MATERIAL TERMINAL: COPPER ALLOY

3. TO DETERMINE DIMENSIONS:
N = NUMBER OF POSITIONS PER ROW

4. 7N MIN. PIN RETENTION IN EITHER DIRECTION.

5. PACKAGING:

- = PLASTIC BOX
- = PLASTIC BOX WHEN POLARISATION FEATURE APPLICABLE
- U = TUBE PACKAGING AVAILABLE FROM 06 TO 50 POS
- K = TAPE & REEL PACKAGING WITHOUT PICK UP CAP
- UV = TUBE WITHOUT PICK UP CAP FOR VALEO
- KV = TAPE & REEL WITHOUT PICK UP CAP FOR VALEO

6. FOR POLARIZATION, SPECIFIED PIN

EXAMPLE: A03= ROW A, POSITION 03 TO OMIT PIN
OMIT FROM PRODUCT NUMBER IF THIS FEATURE IS NOT APPLICABLE

7. RoHS COMPATIBLE PRODUCT SPECIFICATIONS

a - PLATING:

- "LF" MEANS THE PRODUCT IS LEAD-FREE,
2µm MINIMUM MATTE TIN OVER 1.27µm
MINIMUM NICKEL UNDERPLATE.

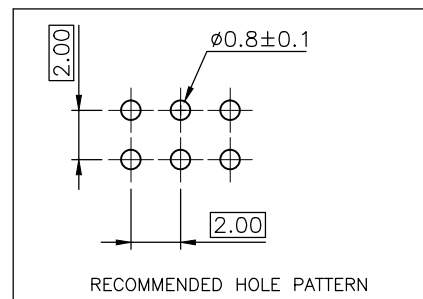
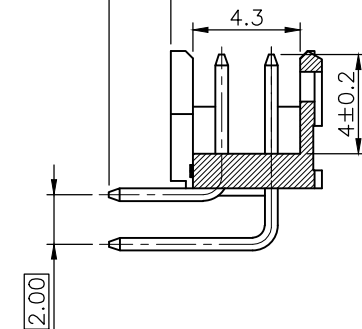
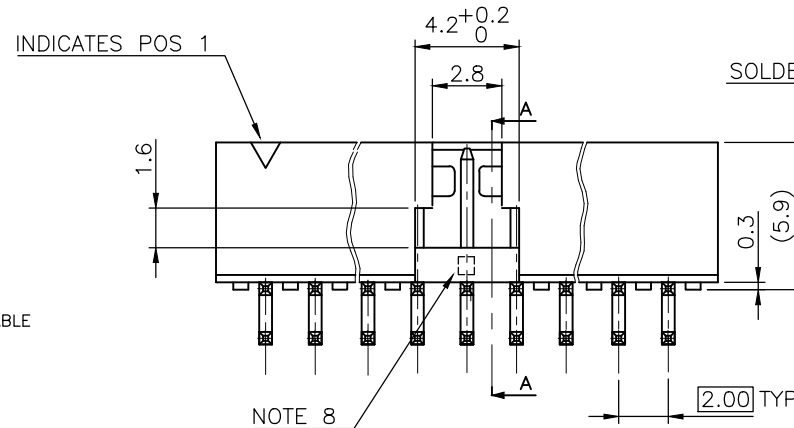
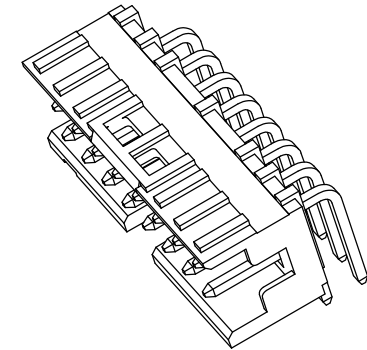
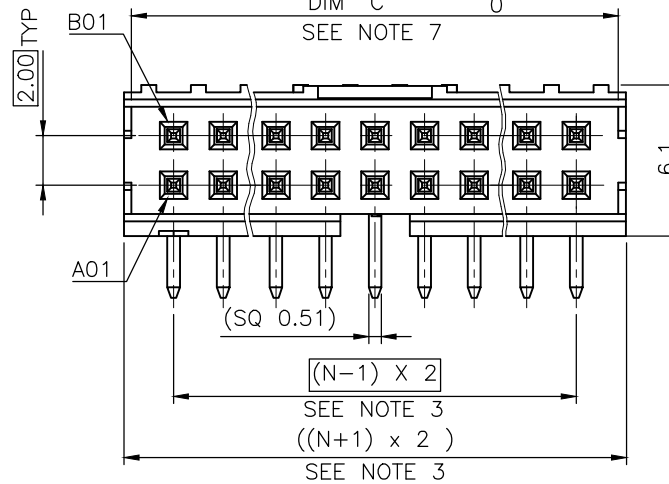
b - MANUFACTURING PROCESS COMPATIBILITY

- THE HOUSING WILL WITHSTAND EXPOSURE TO
260°C ±5°C SOLDER BATH TEMPERATURE FOR
5 SECONDS IN A WAVE SOLDER APPLICATION
WITH A 1.6mm MIN THICK CIRCUIT BOARD.
- COMPATIBLE 260°C REFLOW PROCESS

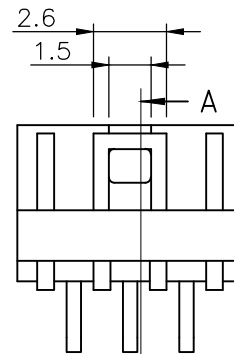
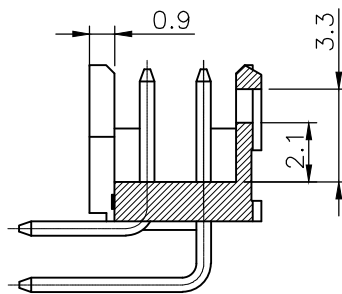
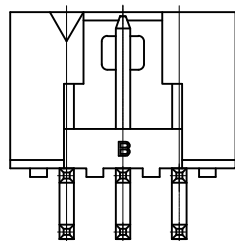
c - LABELLING:

- MEETS PACKAGING SPECS AS PER GS-14-920
- THIS PRODUCT MEETS EUROPEAN DIRECTIVES
AND OTHER COUNTRY REGULATIONS AS DISCRIBED
IN GS-47-0004

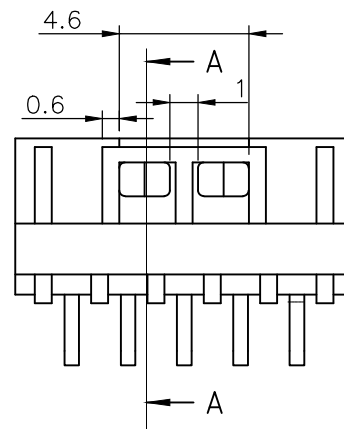
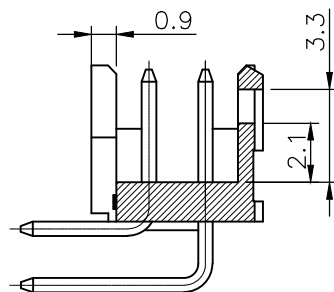
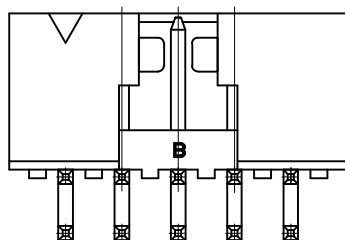
8. LOCATION OF CAVITIES MOULD IDENTIFICATION



mat'l. code				surface		tolerance	projection	product family	
SEE NOTES				ISO 1302	ISO 406	ISO 1101		MINITEK	
ltr	ecn	no	dr	date	tolerances unless otherwise specified			title	
A	F08-0128	LMU		08.04.08	angles	linear	X.X ±0.3	SHR HEADER 2.00 RA REVERSED	
B	B-18376	JCO		14.07.23			X.XX ±0.13		
C	B-19157	LMU		14.10.22			X.XXX ±0.05	scale 1:1	
D	B-19190	LMU		14.10.24	dr	L.MULIN	07.11.26	dwg no	
E	B-20201	BVE		15.02.05	engr	J.COMPAGNON	07.11.26		
F	B-20254	LMU		15.02.16	chr			98417	
					appd	JM.C	08.02.14	type	
sheet index				revision	F	A		CUSTOMER Drawing	
				sheet	1	2		A3	



LATCHING FEATURES FOR 2x3 POS AND 2x4 POS
NO LATCHING AVAILABLE FOR 2x2 POS



LATCHING FEATURES FOR 2x5 POS UP TO 2x25 POS

mat'l. code SEE NOTES				surface ISO 1302 ✓	tolerance ISO 406 ISO	projection 101	product family MINITEK
ltr	ecn no	dr	date	tolerances unless otherwise specified			title
A	B-18376	JCO	14.07.23	angles	linear	X.X ±0.3 X.XX ±0.13 X.XXX ±0.05	SHR HEADER 2.00 RA REVERSED
				dr	L.MULIN	14.07.21	dwg no
				enrg	J.COMPAGNON	14.07.21	sheet 2 of 2
				chr			size
				appd	JCO	14.07.23	98417 A3
sheet index	revision sheet						type
							CUSTOMER Drawing