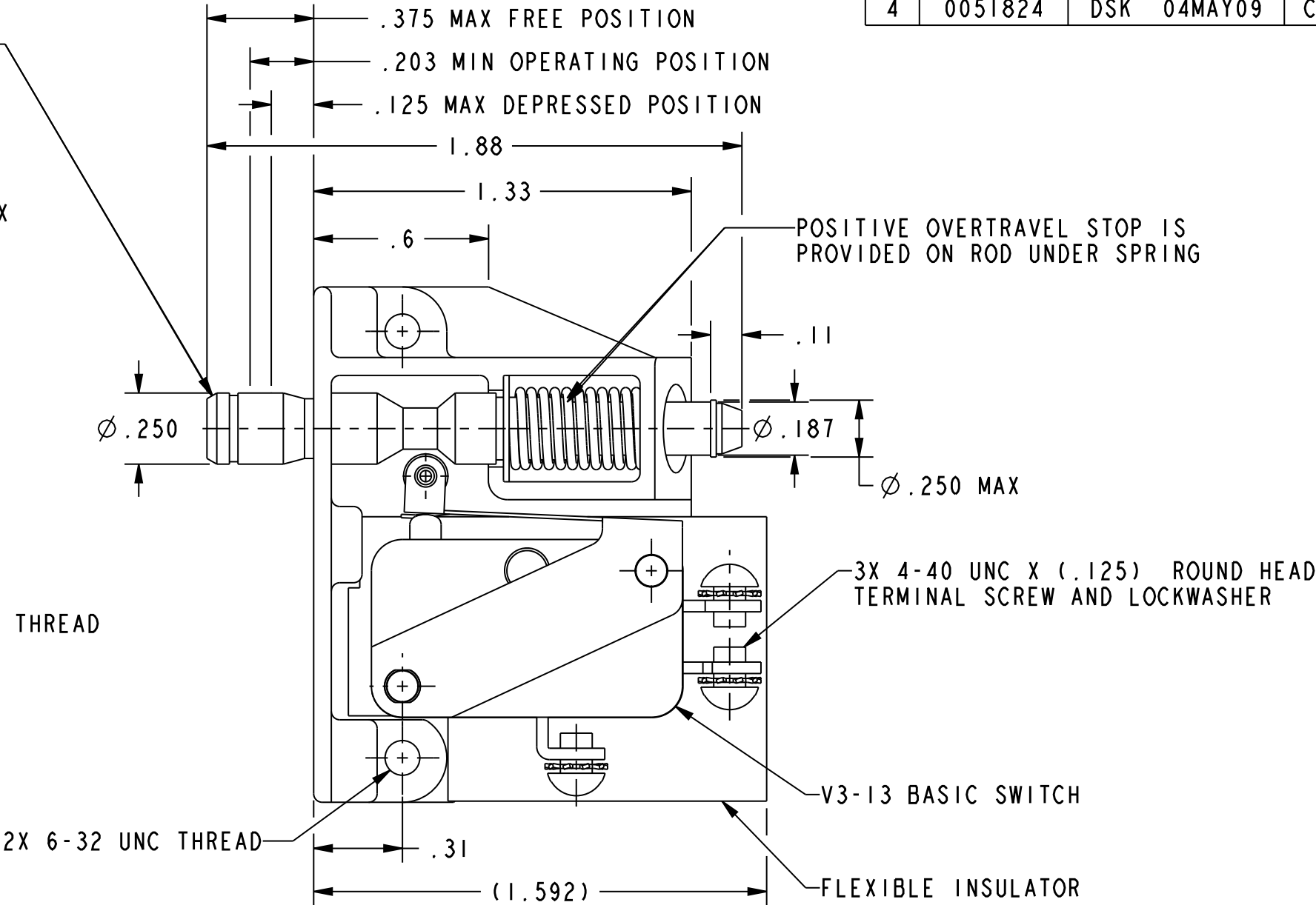
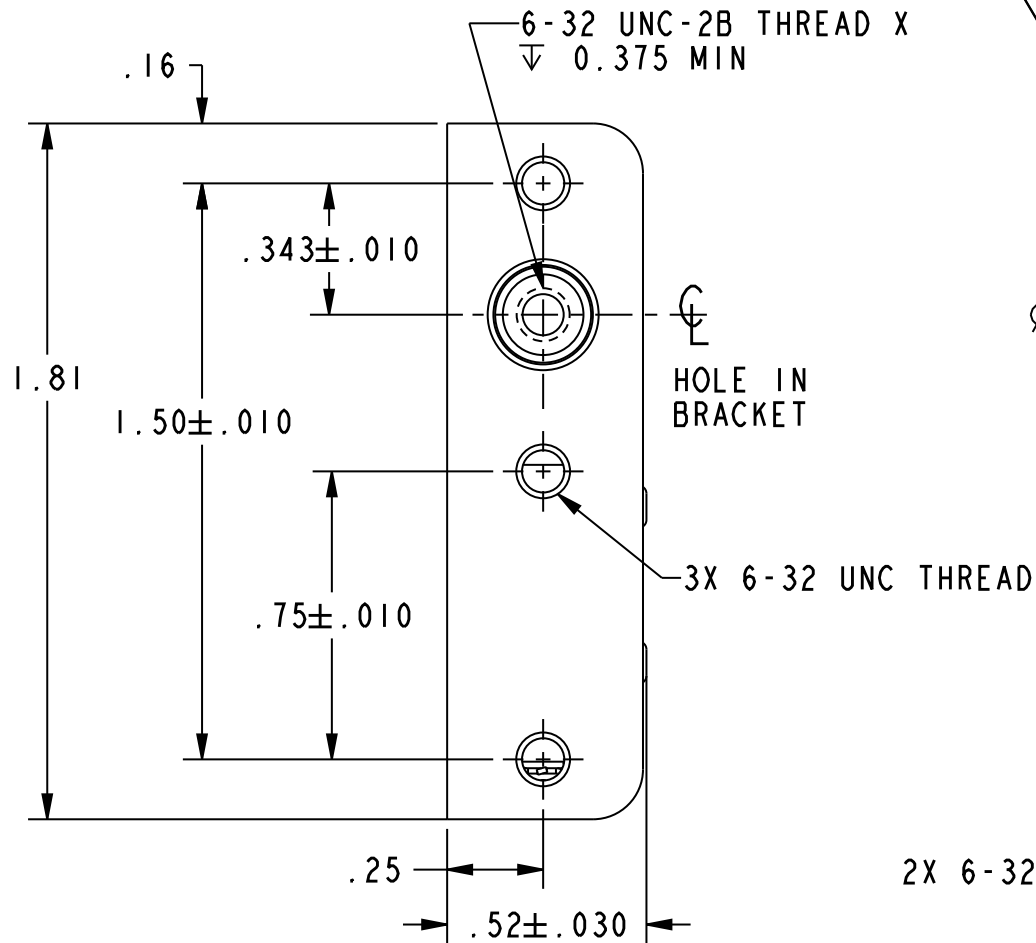


HONEYWELL PART NUMBER
3AC49
PRODUCT CODE
KC-C0490

REV	DOCUMENT	CHANGED BY	CHECK
4	0051824	DSK 04MAY09	CMH

PUSH TO OPERATE-RETURNS AUTOMATICALLY
TO POSITION SHOWN
PULL TO OPERATE-REMAINS IN OPERATED
POSITION UNTIL RESET FOR AUTOMATIC RETURN
BY NEXT FULL STROKE "PUSH" OPERATION



- NOTES:-
- 1 - NOTCH IN ACTUATOR ROD WILL PERMIT .035 DISPLACEMENT BETWEEN END OF ROD AND HOLE IN BRACKET
 - 2 - PLASTIC PARTS ARE MADE OF MINERAL FILLED PHENOLICS
 - 3 - WITH ROD IN EITHER ACTUATED POSITION, BASIC SWITCH PLUNGER MUST HAVE .010 MIN OVERTRAVEL AND WITH ROD IN FREE POSITION BASIC SWITCH PLUNGER MUST HAVE .005 MIN RELEASE TRAVEL

RELEASE NO. SR-11230

CHARACTERISTICS		ELECTRICAL DATA		DESIGN UNITS: INCH TOLERANCES UNLESS NOTED:		DRAWN	KDR	11SEP96	Honeywell				
TOTAL TRAVEL .250 APPROX PUSH DIRECTION .187 APPROX PULL DIRECTION FULLY DEPRESSED FORCE---4 LB MAX		CONTACT ARRANGEMENT S P D T		NO PLACES .X ± ONE PLACE .X ± TWO PLACE .XX ± THREE PLACE .XXX ± ANGLES X ±		CHECK	-	-					
		15.1A 1/2 HP 125 OR 250 VAC 1/2A 125 VDC, 1/4A 250 VDC 5A 125 VAC "L"		THIRD ANGLE PROJECTION		THIS DRAWING COVERS A PROPRIETARY ITEM AND IS THE PROPERTY OF HONEYWELL. THIS DRAWING IS NOT TO BE COPIED OR USED WITHOUT THE PERMISSION OF HONEYWELL.			TITLE ASSEMBLY-SWITCH				
						INTERPRET PER ANSI Y14.5M-1982 OTHER HONEYWELL ENGINEERING STANDARDS MAY APPLY			SIZE	TYPE	CAGE CODE	DRAWING NAME	REV
						Pro/ENGINEER 3D			B	I	-	3AC49	4
									SCALE	2:1			SHEET 1 OF 1

Mouser Electronics

Authorized Distributor

Click to View Pricing, Inventory, Delivery & Lifecycle Information:

[Honeywell:](#)

[3AC49](#)