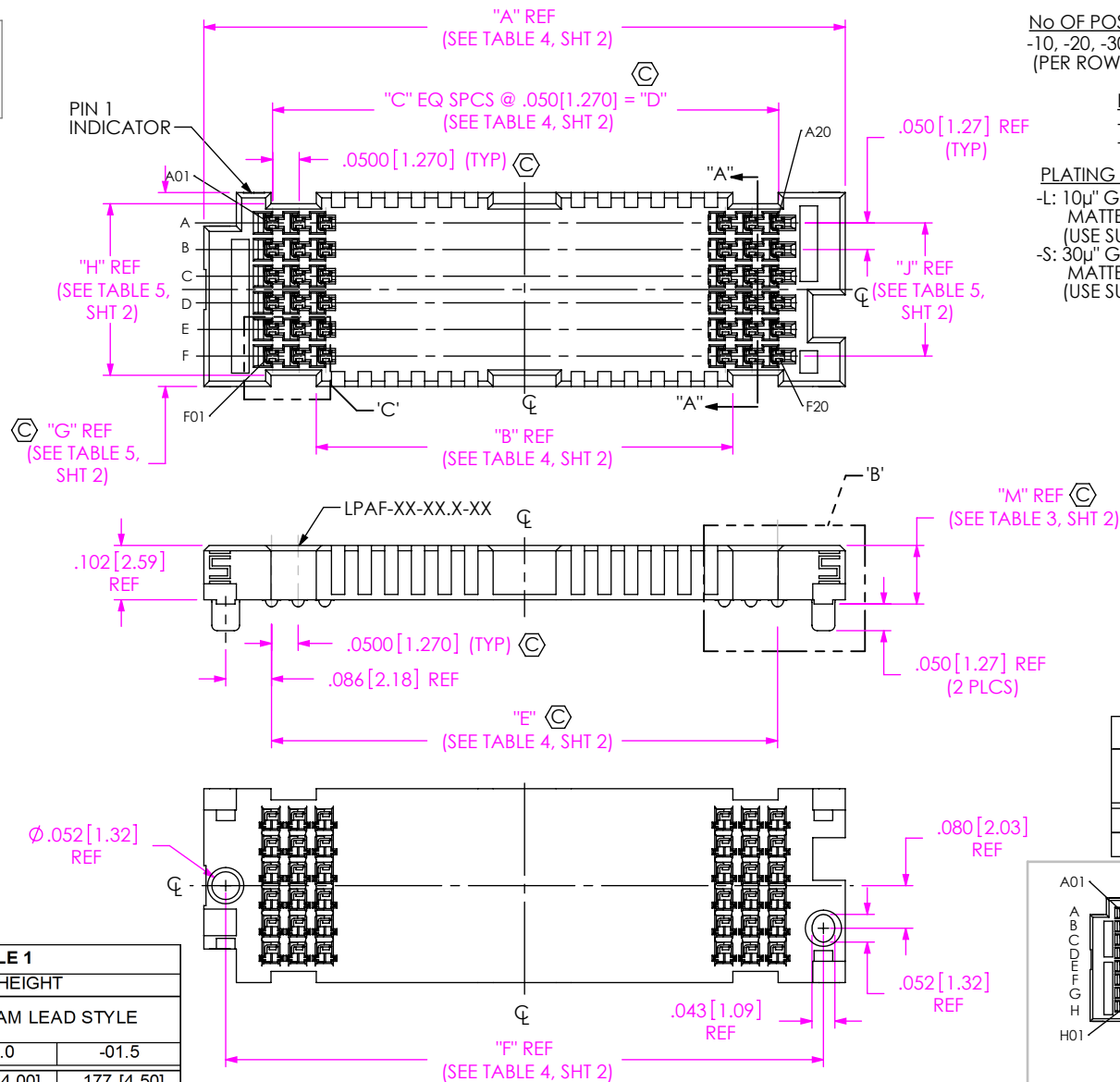


DO NOT
SCALE FROM
THIS PRINT



No OF POSITIONS
-10, -20, -30, -40, **-50
(PER ROW)

LEAD STYLE
-03.0: 3.0mm
-03.5: 3.5mm

PLATING SPECIFICATION

-L: 10µ" GOLD ON CONTACT AREA,
MATTE TIN ON TAIL
(USE SUB-C-289-XX.X-L-X)
-S: 30µ" GOLD ON CONTACT AREA,
MATTE TIN ON TAIL
(USE SUB-C-289-XX.X-S-X)

ROW SPECIFICATION

-04: 4 ROW
-06: 6 ROW
-08: 8 ROW
*-10: 10 ROW

(* = NOT TOOLED)

(** = NOT TOOLED FOR 04, 06 & 10 ROWS)

PACKAGING
-TR: TAPE & REEL
(SEE NOTES 4,5,7)

OPTION
-K: POLYIMIDE PAD
(SEE FIG 3, SHT 3)

SOLDER COMPOSITION & STYLE

-1: 63.0% TIN / 37.0% LEAD
CRIMP TAIL
(USE SUB-C-289-XX.X-X-1)
-2: 95.5% TIN / 3.8% SILVER
.7% COPPER CRIMP TAIL
(USE SUB-C-289-XX.X-X-2)

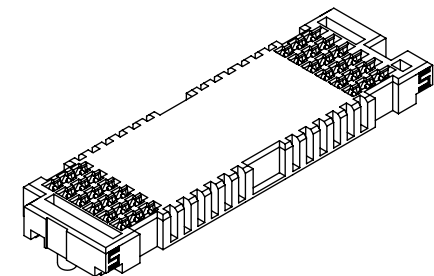


TABLE 2

LPAF ASSEMBLY	"BODY CALLOUT"	"CONTACT SUB ASSEMBLY"
LPAF-XX-03.0-X-XX-X-K-TR	LPAF-XX-03.0-XX	SUB-C-289-03.0-X-X
LPAF-XX-03.5-X-XX-X-K-TR	LPAF-XX-03.5-XX	SUB-C-289-03.5-X-X

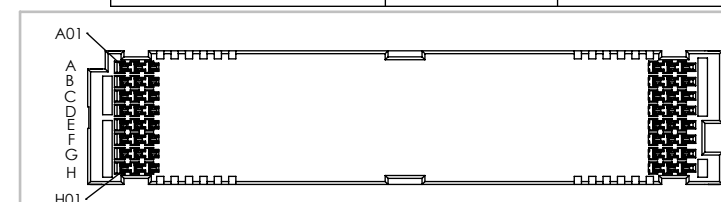


FIG 4

LPAF-40-03.0-X-08-X-TR SHOWN
(DIFFERENT AS SHOWN, OTHERWISE SAME AS FIG 1)

TABLE 1

STACK HEIGHT

LPAF LEAD STYLE	LPAM LEAD STYLE	
	-01.0	-01.5
-03.0	.157 [4.00]	.177 [4.50]
-03.5	.177 [4.50]	.197 [5.00]

NOTES:

1. Ⓢ REPRESENTS A CRITICAL DIMENSION.
2. PUSH OUT FORCE 0.50LBS [2.22N].
3. DIMENSION TO BE MEASURED IN ALL FOUR CORNERS.
4. TAPE & REEL WILL BE SUPPLIED WHETHER OR NOT -TR IS SPECIFIED.
5. FOR QUANTITIES UP TO 49 PCS, NO LEADER, TRAILER OR REEL WILL BE SUPPLIED. FOR 50-124 PIECES, NO LEADER OR TRAILER WILL BE SUPPLIED.
6. NOTE DELETED.
7. ATTACH LABEL "SEAX-0001" TO EACH TAPE & REEL PACKAGE.
8. Ⓢ MAXIMUM VARIATION BETWEEN ROWS: 0.003 [0.08]. TO BE MEASURED AT FIRST AND LAST POSITIONS ONLY, ALL ROWS.

UNLESS OTHERWISE SPECIFIED,
DIMENSIONS ARE IN INCHES[MILLIMETERS].
TOLERANCES ARE:

DECIMALS ANGLES
.XX: ±.01 [.3] 2°
.XXX: ±.005 [.13]
.XXXX: ±.0020 [.051]

PROPRIETARY NOTE

THIS DOCUMENT CONTAINS CONFIDENTIAL AND
PROPRIETARY INFORMATION AND ALL DESIGN,
MANUFACTURING, REPRODUCTION, USE, PATENT RIGHTS
AND SALES RIGHTS ARE EXPRESSLY RESERVED BY SAMTEC,
INC. THIS DOCUMENT SHALL NOT BE DISCLOSED, IN WHOLE
OR PART, TO ANY UNAUTHORIZED PERSON OR ENTITY NOR
REPRODUCED, TRANSMITTED OR INCORPORATED IN ANY
OTHER PROJECT IN ANY MANNER WITHOUT THE EXPRESS
WRITTEN CONSENT OF SAMTEC, INC.

MATERIAL: DO NOT SCALE DRAWING
INSULATOR: LCP, COLOR: BLACK
CONTACT: COPPER ALLOY

SHEET SCALE: 3:1

DESCRIPTION:

samtec

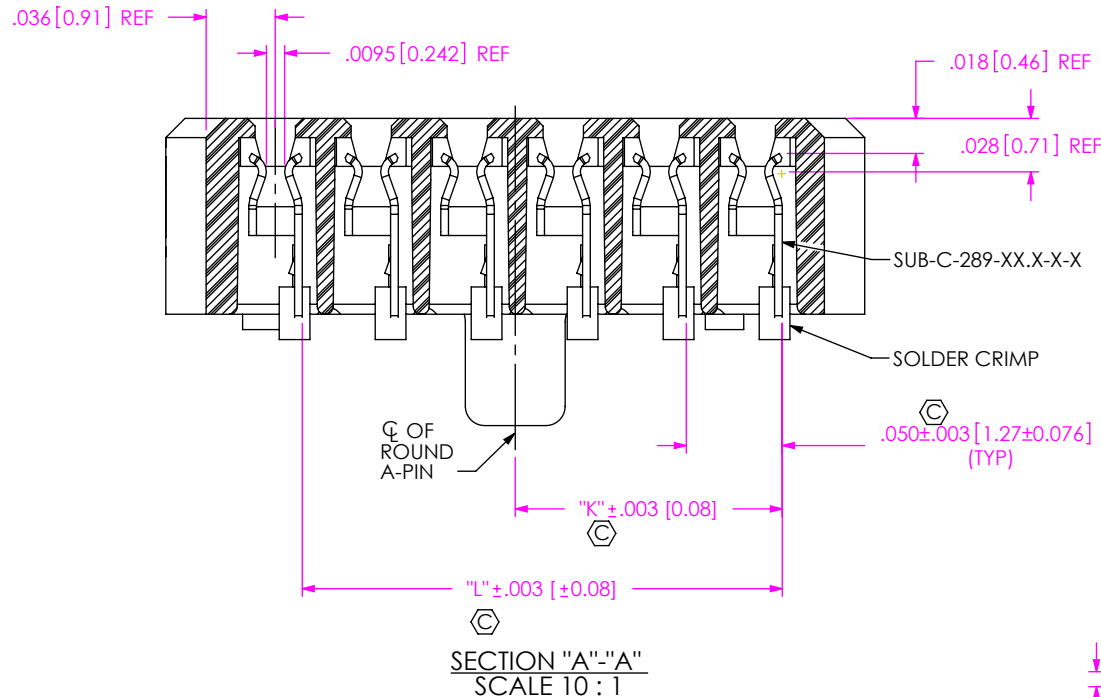
520 PARK EAST BLVD, NEW ALBANY, IN 47150
PHONE: 812-944-6733 FAX: 812-948-5047
e-Mail: info@SAMTEC.com code 55322

LPAF SOCKET ASSEMBLY

DWG. NO.

LPAF-XX-XX.X-X-XX-X-K-TR

BY: R MUSSER 06/08/2009 SHEET 1 OF 3



SECTION "A"- "A"
SCALE 10 : 1

TABLE 3			
POS	LEAD STYLE	"M"	"S"
-10 THRU -30	-03.0	0.110 [2.79]	0.008 [0.20]
-40, ** -50		0.110 [2.79]	0.008 [0.20]
-10 THRU -30	-03.5	0.130 [3.30]	0.018 [0.46]
-40, ** -50		0.130 [3.30]	0.018 [0.46]

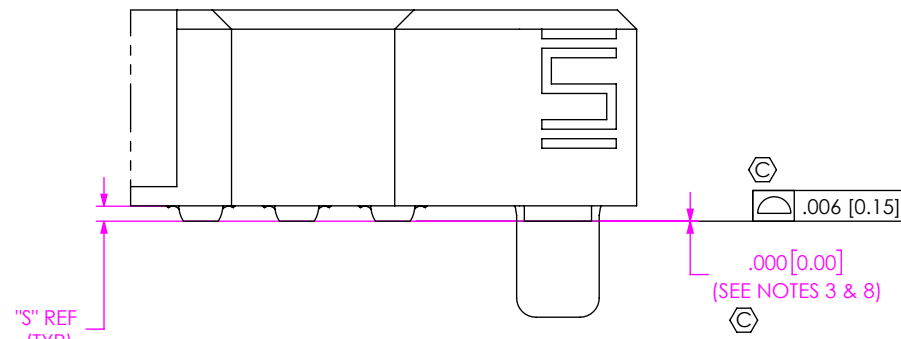
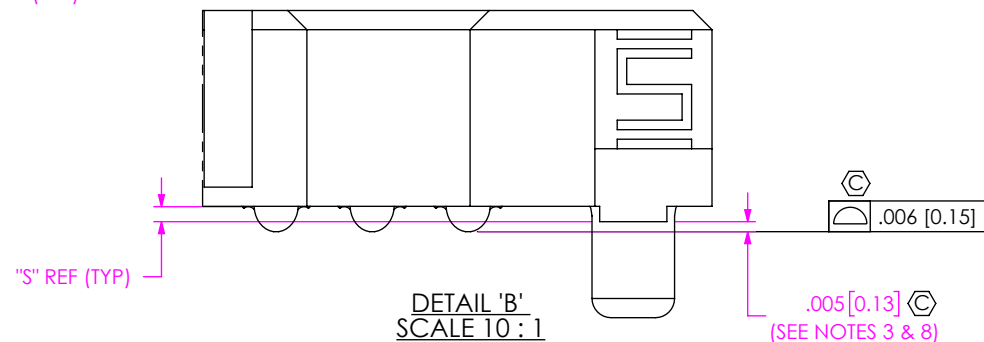
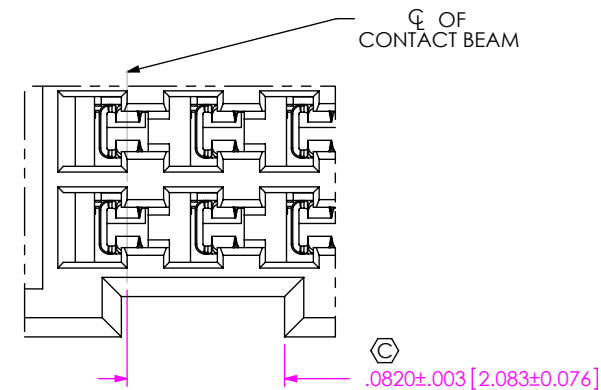
(** = NOT TOOLED FOR 04, 06 & 10 ROWS)

TABLE 4						
No. OF POS	"A"	"B"	"C"	"D"	"E"	"F"
-10	.704 [17.88]	.282 [7.16]	9	.4500 [11.430]	.4500 [11.430]	.622 [15.80]
-20	1.204 [30.58]	.782 [19.86]	19	.9500 [24.130]	.9500 [24.130]	1.122 [28.50]
-30	1.704 [43.28]	1.282 [32.56]	29	1.4500 [36.830]	1.4500 [36.830]	1.622 [41.20]
-40	2.204 [55.98]	1.782 [45.26]	39	1.9500 [49.530]	1.9500 [49.530]	2.122 [53.90]
** -50	2.704 [68.68]	2.282 [57.96]	49	2.4500 [62.230]	2.4500 [62.230]	2.622 [66.60]

(** = NOT TOOLED FOR 04, 06 & 10 ROWS)

TABLE 5					
ROWS	"G"	"H"	"J"	"K"	"L"
-04	.264 [6.71]	.222 [5.64]	.1500 [3.810]	.089 [2.26]	.150 [3.81]
-06	.364 [9.25]	.322 [8.18]	.2500 [6.350]	.139 [3.53]	.250 [6.35]
-08	.464 [11.79]	.422 [10.72]	.3500 [8.890]	.189 [4.80]	.350 [8.89]
* -10	.564 [14.33]	.522 [13.26]	.4500 [11.430]	.239 [6.07]	.450 [11.43]

* = NOT TOOLED



<p>PROPRIETARY NOTE</p> <p>THIS DOCUMENT CONTAINS CONFIDENTIAL AND PROPRIETARY INFORMATION AND ALL DESIGN, MANUFACTURING, REPRODUCTION, USE, PATENT RIGHTS AND SALES RIGHTS ARE EXPRESSLY RESERVED BY SAMTEC, INC. THIS DOCUMENT SHALL NOT BE DISCLOSED, IN WHOLE OR PART, TO ANY UNAUTHORIZED PERSON OR ENTITY NOR REPRODUCED, TRANSFERRED OR INCORPORATED IN ANY OTHER PROJECT IN ANY MANNER WITHOUT THE EXPRESS WRITTEN CONSENT OF SAMTEC, INC.</p>	<p>DO NOT SCALE DRAWING</p>	
	<p>SHEET SCALE: 3:1</p>	
	<p>DESCRIPTION:</p> <p>LPAF SOCKET ASSEMBLY</p>	
	<p>DWG. NO.</p> <p>LPAF-XX-XX.X-X-XX-X-K-TR</p> <p>BY: R MUSSER 06/08/2009 SHEET 2 OF 3</p>	

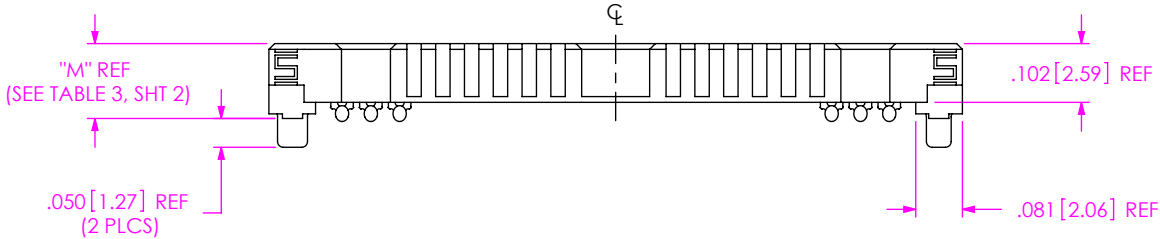


FIG 2
LPAF-20-03.5-X-06-X-X-K-TR SHOWN
(SOME FEATURES REMOVED FOR CLARITY)

TABLE 6								
ROWS	DOT APPLICATOR POLYIMIDE TAPE CALLOUT	"N"	"P"					"Q"
			10 POS	20 POS	30 POS	40 POS	*50 POS	
-04	K-DOT-.256-.375-.005	.256 [6.50]	.224 [5.69]	.474 [12.04]	.724 [18.39]	.974 [24.74]	1.224 [31.09]	.004 [0.10]
-06	K-DOT-.354-.469-.005	.354 [8.99]	.175 [4.45]	.425 [10.80]	.675 [17.15]	.925 [23.50]	1.175 [29.85]	.005 [0.13]
-08	K-DOT-.460-.550-.005	.460 [11.68]	.122 [3.10]	.372 [9.45]	.622 [15.80]	.872 [22.15]	1.122 [28.50]	.002 [0.05]
*-10	K-DOT-.551-.625-.005	.551 [14.00]	.077 [1.96]	.327 [8.31]	.577 [14.66]	.827 [21.01]	1.077 [27.36]	.007 [0.18]

* = NOT TOOLED

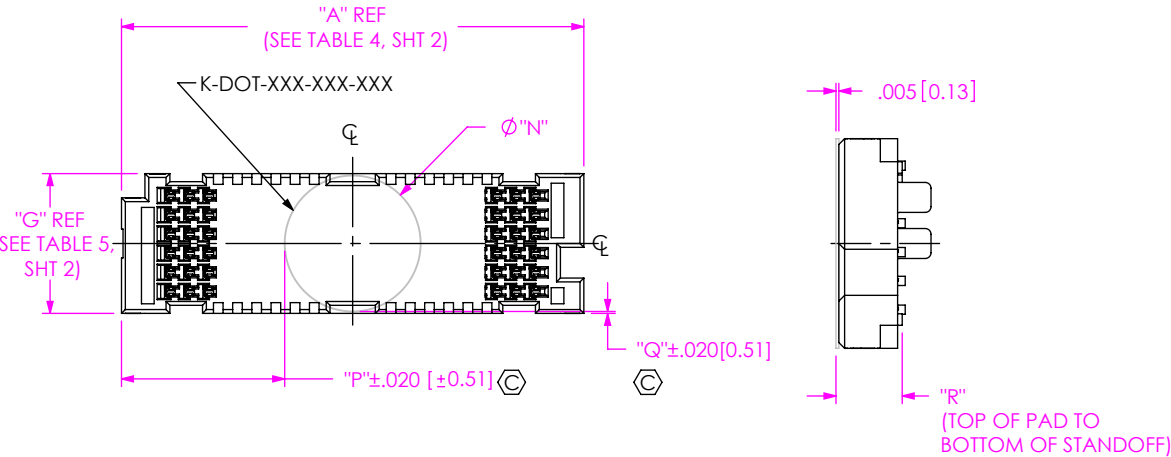


FIG 3
-K: POLYIMIDE PAD
(USE K-DOT-XXX-XXX-XXX)
LPAF-20-03.0-X-06-X-K-TR SHOWN
(SOME FEATURES REMOVED FOR CLARITY)

TABLE 7		
LEAD STYLE	"R"	
-03.0	0.115	[2.92]
-03.5	0.135	[3.43]

• PROPRIETARY NOTE

THIS DOCUMENT CONTAINS CONFIDENTIAL AND PROPRIETARY INFORMATION AND ALL DESIGN, MANUFACTURING, REPRODUCTION, USE, PATENT RIGHTS AND SALES RIGHTS ARE EXPRESSLY RESERVED BY SAMTEC, INC. THIS DOCUMENT SHALL NOT BE DISCLOSED, IN WHOLE OR PART, TO ANY UNAUTHORIZED PERSON OR ENTITY NOR REPRODUCED, TRANSFERRED OR INCORPORATED IN ANY OTHER PROJECT IN ANY MANNER WITHOUT THE EXPRESS WRITTEN CONSENT OF SAMTEC, INC.

DO NOT SCALE DRAWING

SHEET SCALE: 1:0.333333

DESCRIPTION:
LPAF SOCKET ASSEMBLY

DWG. NO.
LPAF-XX-XX.X-X-XX-X-K-TR

BY: R MUSSER 06/08/2009 SHEET 3 OF 3

samtec

520 PARK EAST BLVD, NEW ALBANY, IN 47150
PHONE: 812-944-6733 FAX: 812-948-5047
e-Mail info@SAMTEC.com code 55322