

Fuse Blocks, 5 x 20 and 5 x 25 mm

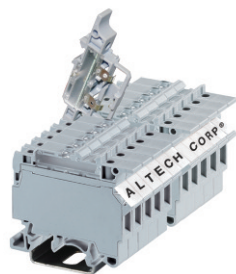
Altech fuse terminals are also available with light indication - CF4U(L). A specially designed built-in circuit gives light indication in the event of fuse blow out. Thus, fault in a circuit can be easily located. No polarity is required.

Important:

The disconnecting device is not suitable for interrupting load. The supply must be switched off before operating the slide link/lever.

† Fuses are sold separately see pages 100-101.

* Add required voltage to part number as a suffix. i.e. CF4U(L)/6-60 V for 6-60 V AC/DC.



Terminal Width	
Height x Length	
Stripping Length	
Insulation Material	
Type of Connection	
LED Voltage	6-60 V AC/DC 90-240 V AC/DC
Size of Fuse Used	
Type of Fuse Used	
Approvals	
Wire Range	
Voltage Rating	
Current Rating	
Torque	
Other Approvals	

Terminal Block

DIN Rail
for ordering information
refer to pages 90-91

End Stop
for ordering information
refer to page 92

Internal Jumper	2 pole	
	3 pole	
	4 pole	
	10 pole	

Insulated Internal Jumper	2 pole	
	3 pole	
	4 pole	
	10 pole	

Current Bar	2 pole	
	3 pole	
	4 pole	
	10 pole	

Shorting Sleeve & Screw

External Jumper	2 pole	
	3 pole	
	4 pole	
	10 pole	

Marking Tags (on terminal)
(on Lever)

CF4U†

NEW

No End Plate Required.

8 mm

57.6 x 57 mm

9.5 mm

Polyamide 6.6

2 screw clamps

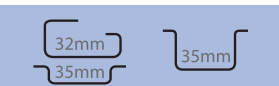
Ø5x20, Ø5x25 mm
Glass

C US	60947-7-3	C US
22-10 AWG	0.2-4 mm²	22-10 AWG
600 V	1000 V	600 V
10 A	6.3 A	10 A
7 lb-in	0.5 Nm	7 lb-in

RoHS
CE

Cat. No. Std. Pk.

CF4U 100



CA702 50
CA802 50

CA711/2 100
CA711/3 50
CA711/4 50
CA711/10 20

MT8 100
MT8 100

CF4U(L)†*

NEW

No Polarity Required.

8 mm

57.6 x 57 mm

9.5 mm

Polyamide 6.6

2 screw clamps

CF4U(L)/6-60V
CF4U(L)/90-240V

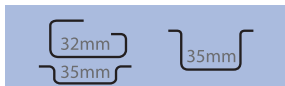
Ø5x20, Ø5x25 mm
Glass

C US	60947-7-3	C US
22-10 AWG	0.2-4 mm²	22-10 AWG
600 V	600 V	600 V
10 A	6.3 A	10 A
7 lb-in	0.5 Nm	7 lb-in

RoHS
CE

Cat. No. Std. Pk.

CF4U(L)* 50

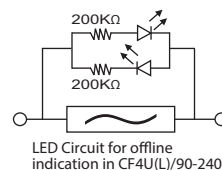
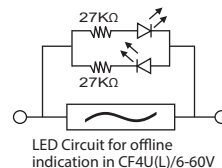


CA702 50
CA802 50

CA711/2 100
CA711/3 50
CA711/4 50
CA711/10 25

MT8 100
MT8 100

CF4U(L) Only



COLOR BLOCKS	
(other than standard grey)	
When ordering please add color suffix to Cat. No.	
Example for color Red: Cat.No./R	
Color	Ordering Suffix
Red	R
Yellow	Y
Blue	BU
Green	G
Consult Altech for availability:	
Orange	O
Beige	BG
Dark Brown	DB
Black	BL
White	W

Mouser Electronics

Authorized Distributor

Click to View Pricing, Inventory, Delivery & Lifecycle Information:

[Altech:](#)

[CF4U](#) [CF4U\(L\)/6-60V](#) [CF4U\(L\)/90-240V](#)