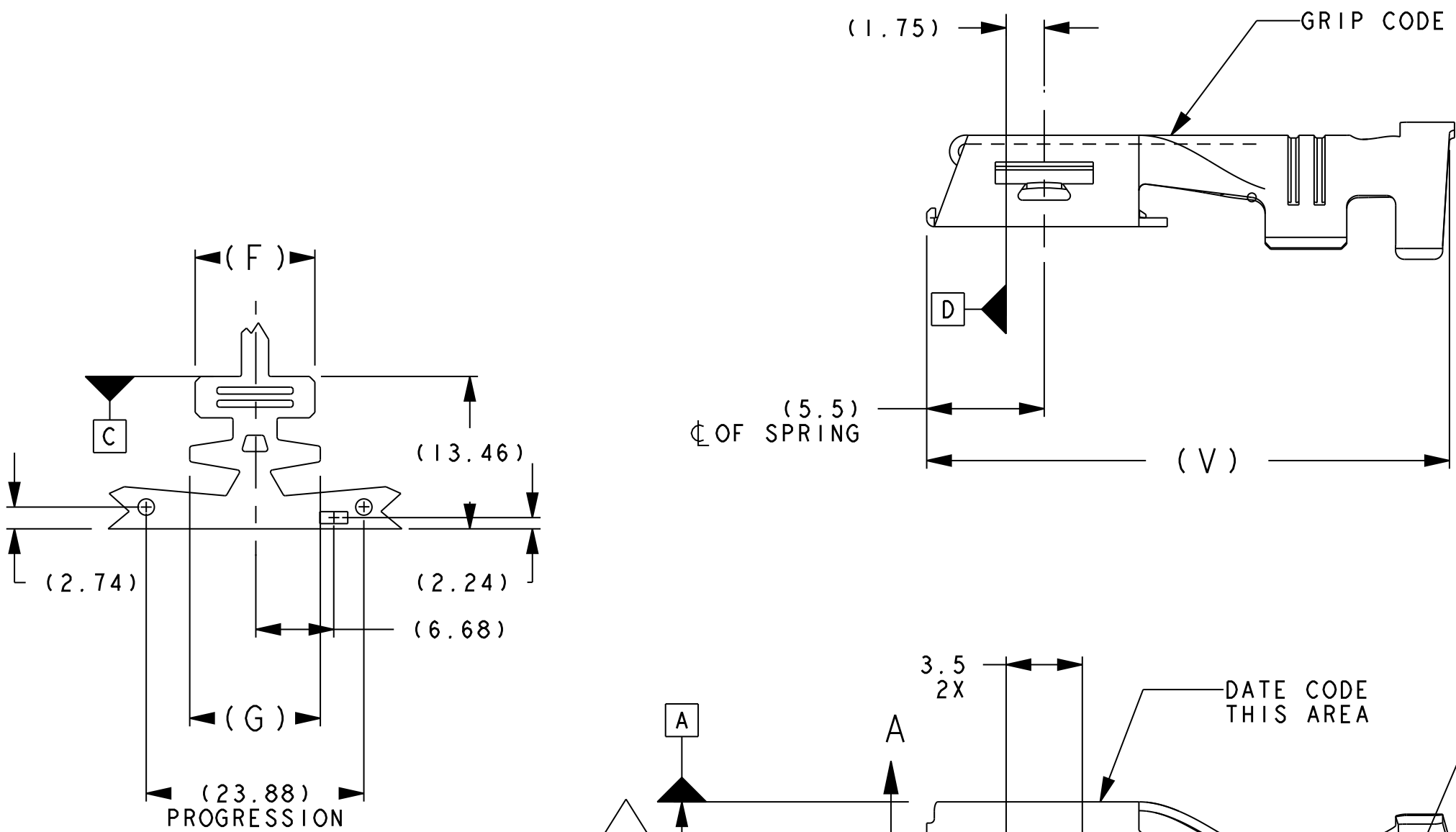


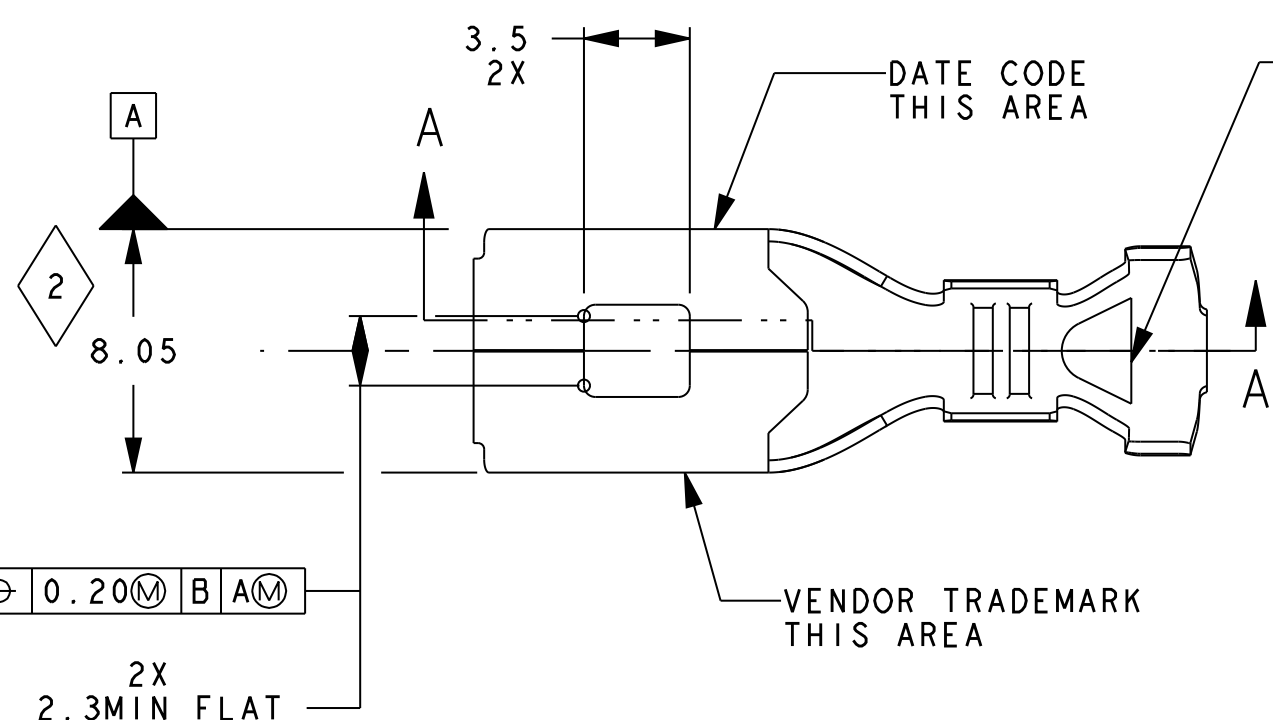
	16		15		14		13		12		11		10		9		8	
	8	NOT TOOLED	8	4.5/5.1	---	F485900 3,4	---	---	8	7.1	---	8.1	3.50	4.5	---	---	---	---
	10	6.0/4.0	4.3/3.4	---	---	---	---	---	10	5.6	8.8	2.4	3.4	5.4	6.5	13.5	17.3	---
				---	---	---	---	---						5.4	6.5	13.5	17.3	---
				---	---	---	---	---						3.2	4.2	14.5	---	---
				---	---	---	---	---						---	---	---	---	---
M	2(12/14)	2(3.0/2.0)	3.4/2.3 PER WIRE	---	---	---	---	---	11	6.3	7.8	1.9	4.7	2.7	6.2	17.6	18.7	1.90
				---	---	---	---	---						2.7	6.2	17.6	18.7	1.90
				---	---	---	---	---						2.7	6.2	17.6	18.7	1.90
				---	---	---	---	---						2.7	6.2	17.6	18.7	1.90
	12/14	3.0/2.0	3.4/2.3	---	---	---	---	---	12	4.6	6.9	2.0	2.9	4.6	5.6	10.7	15.4	---
				---	---	---	---	---						4.6	5.6	10.7	15.4	---
				---	---	---	---	---						4.6	5.6	10.7	15.4	---
				---	---	---	---	---						4.6	5.6	10.7	15.4	---
	2(16/18)	2(1.50/0.75)	2.4/1.7 PER WIRE	---	---	---	---	---	13	5.1	6.2	1.3	3.5	1.9	4.6	12.4	13.4	1.30
				---	---	---	---	---						1.9	4.6	12.4	13.4	1.30
				---	---	---	---	---						1.9	4.6	12.4	13.4	1.30
				---	---	---	---	---						1.9	4.6	12.4	13.4	1.30
L	16/18	1.50/0.75	2.4/1.7	---	---	---	---	---	16	3.5	5.9	1.2	1.9	3.6	4.4	8.8	11.6	---
				---	---	---	---	---						3.6	4.4	8.8	11.6	---
				---	---	---	---	---						3.6	4.4	8.8	11.6	---
				---	---	---	---	---						3.6	4.4	8.8	11.6	---
	21(18/20)	2(0.75/0.50)	2.2/1.4 PER WIRE	---	---	---	---	---	17	4.5	5.4	1.0	2.9	1.5	3.8	8.9	10.8	1.00
				---	---	---	---	---						1.5	3.8	8.9	10.8	1.00
				---	---	---	---	---						1.5	3.8	8.9	10.8	1.00
				---	---	---	---	---						1.5	3.8	8.9	10.8	1.00
	18/20	0.75/0.50	2.2/1.4	---	---	---	---	---	18	3.8	---	1.5	2.3	---	---	7.3	---	---
				---	---	---	---	---						---	---	7.3	---	---
				---	---	---	---	---						---	---	7.3	---	---
				---	---	---	---	---						---	---	7.3	---	---
	WIRE SIZE AWG	WIRE SIZE METRIC	INSULATION DIAMETER	UNSEALED NOT GREASED	SEALED NOT GREASED	UNSEALED GREASED	SEALED GREASED	GAGE STAMP	A ±0.4	B ±0.4	C1 DIA	C2 DIA	D2 CORE BLANK WIDTH	(F) INSL BLANK WIDTH	(G) INSL BLANK WIDTH	(J) ---	(K) ---	L ±0.2

CHART NOTES:

"1" AFTER PART NUMBER INDICATES TYPE 1 MATERIAL FOR TERMINAL.
"2" AFTER PART NUMBER INDICATES TYPE 2 or 4 MATERIAL FOR SPRING.
"3" AFTER PART NUMBER INDICATES TYPE 3 MATERIAL FOR TERMINAL.
"4" AFTER PART NUMBER INDICATES TYPE 4 MATERIAL FOR SPRING.
PART NUMBERS WITH LINES THRU THEM HAVE NOT BEEN TOOLED YET.



GENERAL GRIP AND
CARRIER BLANK VIEW
FOR REFERENCE ONLY



HOLE SIZE AND SHAPE
OPTIONAL, FOR SEALED GRIPS
ONLY. NOT REQUIRED FOR
UNSEALED GRIPS.

QUALITY ASSURANCE REQUIREMENTS PER
CHRYSLER PS 7300: 2
SAE USCAR-21

(KX) INDICATES IN-PROCESS INSPECTION FOR
MANUFACTURING DIMENSION(S) OR SPECIFICATION(S): 3
MATERIAL TYPE1 : 0.398±0.013 C194 COPPER ALLOY
PER ASTM B-465
TENSILE STRENGTH: 413-483 Mpa
YIELD STRENGTH: 413 Mpa MINIMUM
ELONGATION IN 51mm: 2% MINIMUM
100% HALT TIN PLATED 0.0013/0.0038 THICK

MATERIAL TYPE2 : 0.254±0.010 C70260 TM04 COPPER
TO ASTM B-422
TENSILE STRENGTH: 689-862 Mpa
YIELD STRENGTH: 689 Mpa MINIMUM
ELONGATION IN 51mm: 1% MINIMUM
100% HALT TIN PLATED OR 100% TIN/SILVER PLATED(95/5)%
0.0013/0.0038 THICK

MATERIAL TYPE3 : 0.398±0.013 C194 COPPER ALLOY
PER ASTM B-465
TENSILE STRENGTH: 413-483 Mpa
YIELD STRENGTH: 413 Mpa MINIMUM
ELONGATION IN 51mm: 2% MINIMUM
100% TIN/SILVER PLATED(95/5)% 0.0013/0.0038 THICK

MATERIAL TYPE4 : 0.254±0.010 C70260 TM04 COPPER
TO ASTM B-422
TENSILE STRENGTH: 689-862 Mpa
YIELD STRENGTH: 689 Mpa MINIMUM
ELONGATION IN 51mm: 1% MINIMUM
100% TIN/SILVER PLATED(95/5)% 0.0013/0.0038 THICK

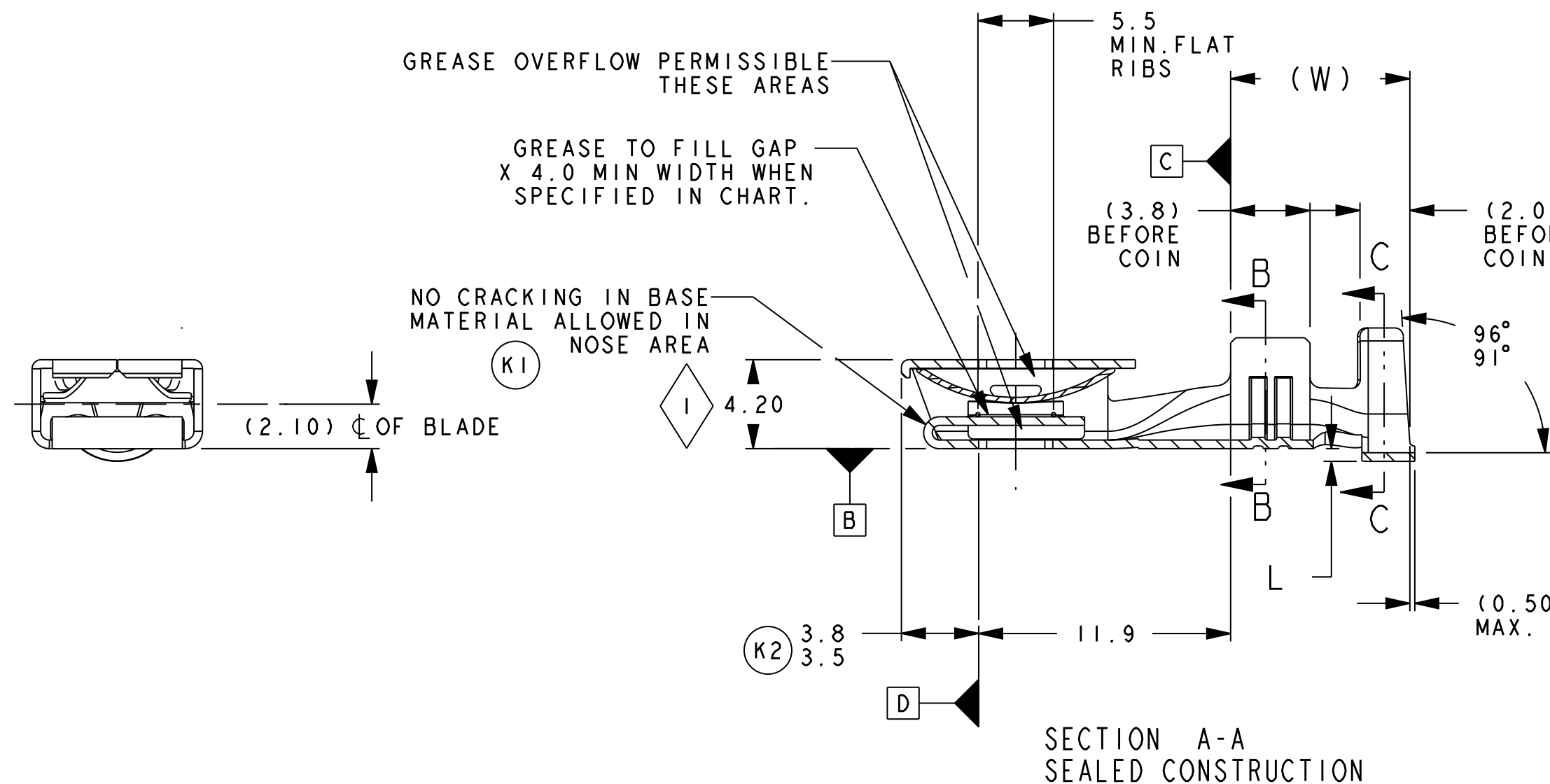
GREASE IS NYE UNIFLOR 8917.

TERMINAL DESIGN IS SYMMETRICAL AROUND CENTERLINE
AND CAN BE ROTATED 180 DEGREES.

FOR CAVITY DIMENSIONS, SEE FCI DRAWING A25009.

ANNUAL QUALITY REQUIREMENTS:
IT IS PERMISSIBLE TO PERFORM CONTINUOUS CONFORMANCE PER
FCI SPECIFICATION #AQA-001 INSTEAD OF ANNUAL LAYOUT AND
ANNUAL PV REQUIREMENTS OF QS-9000 SECTION 2.

TOLERANCES:
1 PLACE DIMENSIONS ±0.30
2 PLACE DIMENSIONS ±0.13
ANGULAR DIMENSIONS ±2°



SECTION A-A
SEALED CONSTRUCTION

CABLE SEAL	7			6		5			4		
	8	8	8.00	3.85*	2.30*	2.50*	5.80*	5.70*	6.55*		
	10	10	6.00								
			5.00								
			4.00								
	12	12	3.00	3.05*	2.05	1.85*	4.90*	5.20*	3.90*		
			2.50							2.05	
			1.4							1.95	
	16	16	1.50	2.80	1.60		3.90*	4.00*	3.90*		
			1.00							1.50	
0.75			1.50*								
18	18	0.75	2.45*	1.50*							
		20							0.50	1.30*	
UNSEALED, MATT SEALED	10	10	6.00	3.85*			4.60		3.70B)		
			5.00							2.20*	
			4.00								
	12	12	3.00	3.05	2.05	3.80	3.30	3.10			
			2.50						1.95		
			1.4						2.00		
	13	2-16/18									
			1.50								
	16	16	1.00	2.80	1.60		3.60	2.80			
18			0.75							1.50	2.40
17	2-18/20										
18	18	0.75	2.45*	1.50*		2.80*	2.50*				
		20							0.50	1.35*	2.30*
GRIP CODE	WIRE SIZE AWG	WIRE SIZE METRIC	CONDUCTOR CRIMP WIDTH "B" STYLE (±0.10)	CONDUCTOR CRIMP HEIGHT AWG (±0.05)	CONDUCTOR CRIMP HEIGHT METRIC (±0.05)	INSULATION CRIMP WIDTH "BorD" STYLE (±0.10)	INSULATION CRIMP HEIGHT AWG (±0.05)	INSULATION CRIMP HEIGHT METRIC (±0.05)			