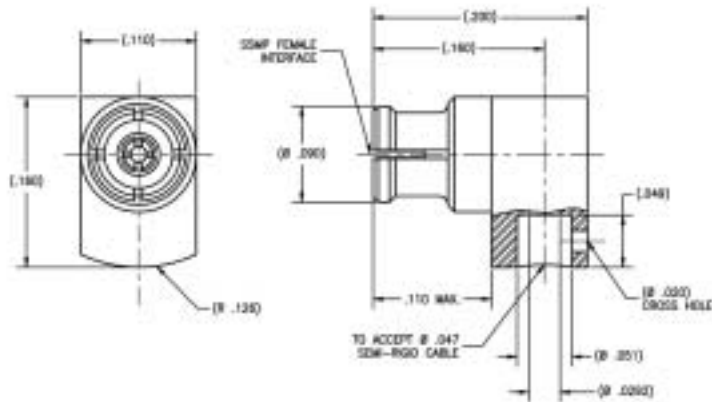


# SSMP Semi-Rigid Cable Connectors

## P148-1CC

SSMP female  
right angle to  
Ø .047 S/R cable

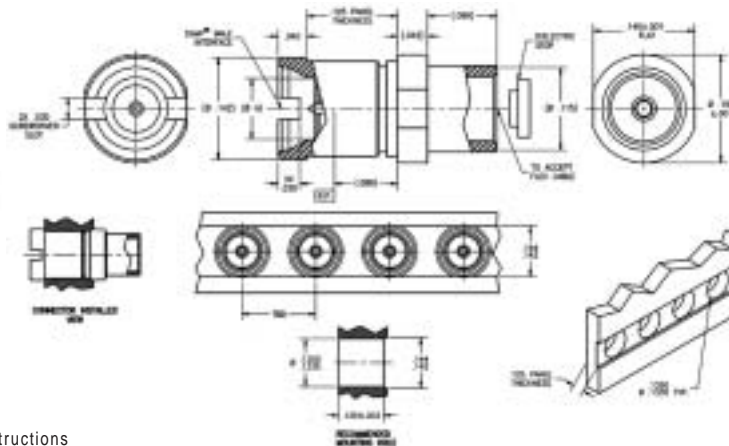


Center conductor is captivated.  
Standard units are gold finish.

Consult factory for Assembly Instructions

## P156

SSMP male  
bulkhead mount  
straight to  
LLF-1087 flex  
cable



Tensolite Part Number	Interface	(Ø A)
P156-1CCSF	Detent	(.085)
P156-2CCSF	Non-Detent	(.088)

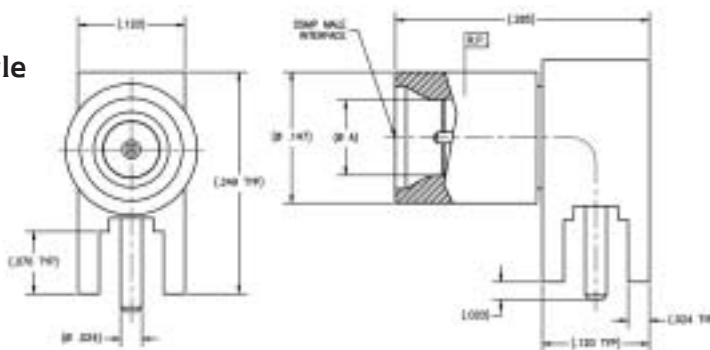
Center conductor is captivated.  
Standard finish is passivated.

Consult factory for Assembly Instructions

# SSMP Circuit Board Connectors

## P303

SSMP male right angle  
to PCB mount

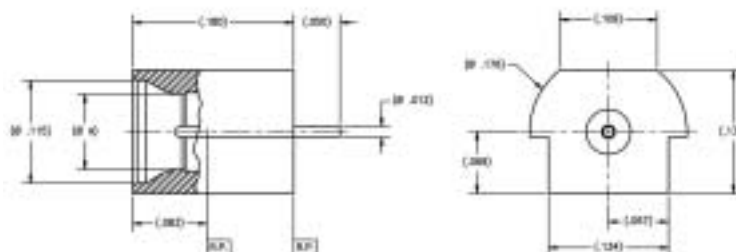


Tensolite Part Number	Interface	(Ø A)
P303-1CC	Detent	(.085)
P303-2CC	Smooth Bore	(.088)

Center conductor is captivated.  
Standard units are gold finish.

## P319

SSMP male PCB edge  
mount to straight  
termination



Tensolite Part No.	(Ø A)	Interface
P319-1CC	(.088)	Detent
P319-2CC	(.085)	Smooth bore

Center conductor is captivated.  
Standard units are gold finish.