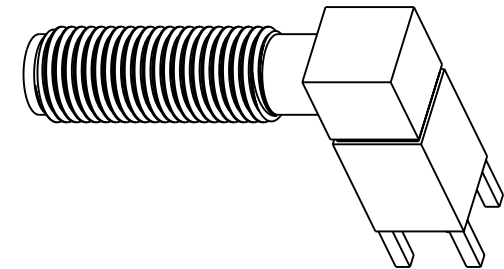


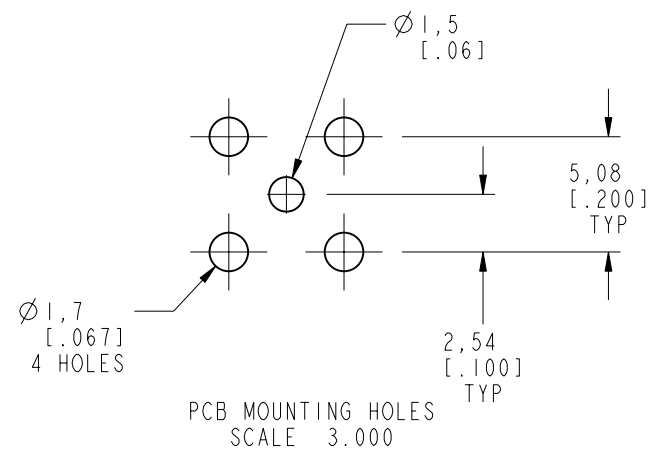
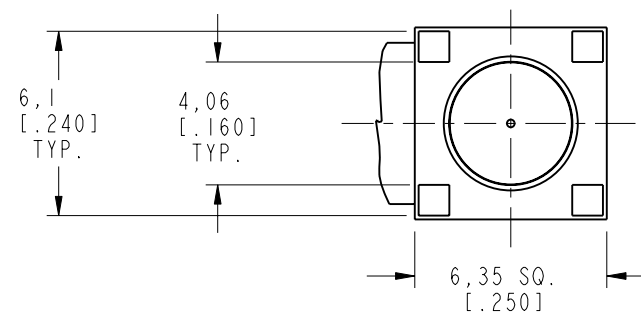
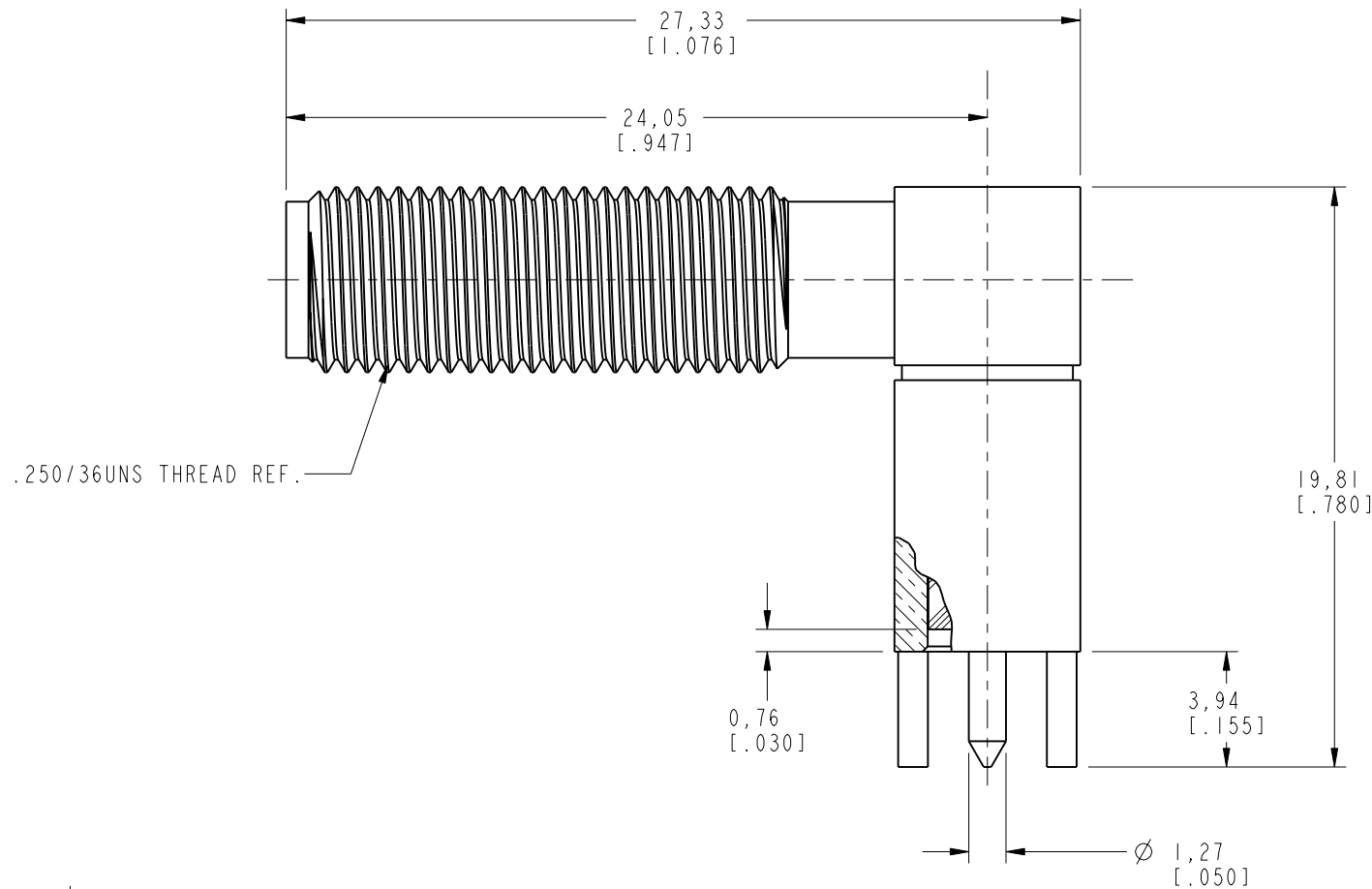
NOTES:

1. MATERIALS OF CONSTRUCTION:
HOUSING W/ BODY & POST - BRASS (ASTM-B16 H02), GOLD PLATED (.000015 MIN THICK)
CONTACT PIN - BERYLLIUM COPPER, GOLD PLATED (.000015 MIN THICK)
INSULATORS (2) - TEFLON PER ASTM-D-1710 OR EQUIV.
COVER = BRASS (QQ-B-613), GOLD PLATED (.000015 MIN THICK)

901-10049		REVISIONS				
DRAWING NO.	REV	DESCRIPTION	DATE	ECO	APPR	
THIRD ANGLE PROJ. 	A	RELEASE TO MFG.	1/23/02	43847	CPM	
	B	SEE SHEET 1	2/13/02	43973	CPM	



SCALE 2.000



CUSTOMER OUTLINE DRAWING

ALL OTHER SHEETS ARE FOR INTERNAL USE ONLY

UNLESS OTHERWISE SPECIFIED, DIMENSIONS ARE IN INCHES AND TOLERANCES ARE: 0.5 - 6mm ±0.2mm	6 - 30mm ±0.4mm	30 - 120mm ± 0.6mm									
NOTICE - These drawings, specifications, or other data (1) are, and remain the property of Amphenol Corp. (2) must be returned upon request; and (3) are confidential and not to be disclosed to any person other than those to whom they are given by Amphenol Corp. The furnishing of these drawings, specifications, or other data by Amphenol Corp., or to any other person to anyone for any purpose is not to be regarded by implication or otherwise in any manner licensing, granting rights or permitting such holder or any other person to manufacture, use or sell any product, process or design, patented or otherwise, that may in any way be related to or disclosed by said drawings, specifications, or other data.			MATERIAL	DRAWN C. McGRATH	DATE 8/23/01	TITLE SMA R/A PCB BULKHEAD JACK			Amphenol Amphenol Corporation Communication and Network Products Division Danbury, CT U.S.A. 06810		
			REFERENCE EAR 372 GEN# ASSYF28_SMA	ENGINEER O. BARTHELMES	DATE 8/23/01						
				APPROVED O. BARTHELMES	DATE 1/23/02						
				CAD FILE I:\SMA\901-10049		CODE ID 74868	DWG SIZE B	DRAWING NO. 901-10049		REV B	
								SCALE: 4.0:1		SHEET 2 OF 2	