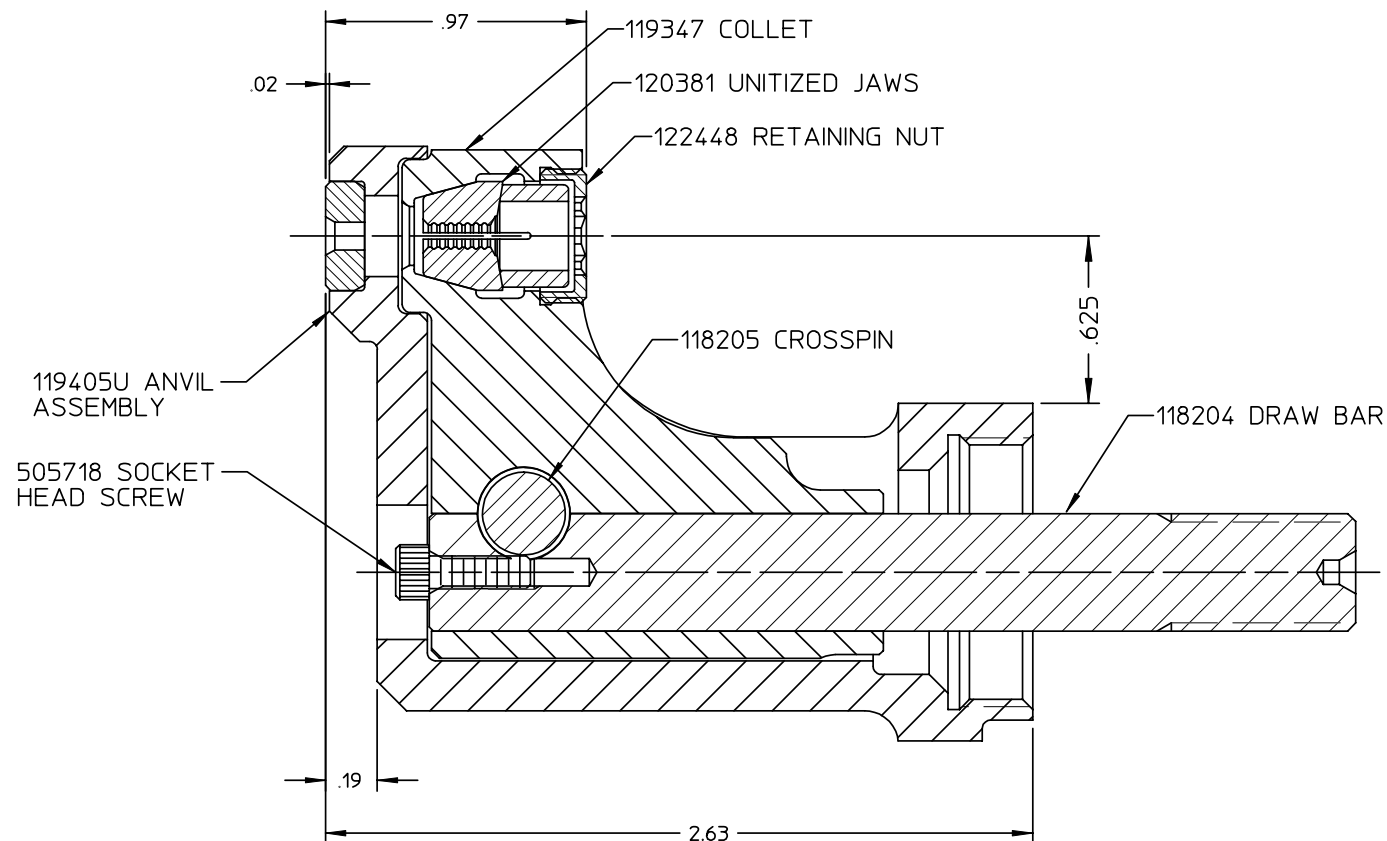
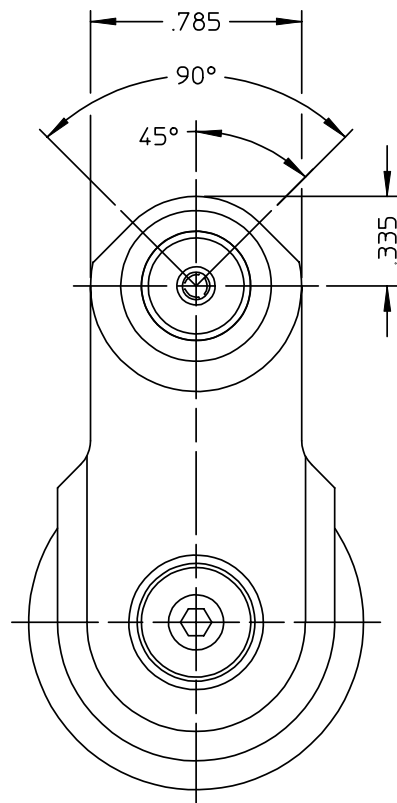


DATA SHEET



NOTES:

- 1 MAXIMUM RECOMMENDED STROKE: .500
- 2 FOR USE WITH THE 225/245 TOOL, USE ATTACHMENT P/N 119400 AND STROKE LIMITER 118362.
- 3 FOR USE WITH THE 2500 TOOL, USE ATTACHMENT P/N 119400 AND STROKE LIMITER KIT 119888.
- 4 FOR OTHER TOOLS AND/OR OTHER TOOL AND STROKE COMBINATIONS, CONSULT ENGINEERING DEPARTMENT.
- 5 OPTIONAL DEFLECTOR KIT P/N 122911 AVAILABLE FOR THIS NOSE ASSEMBLY.
- 6 OPTIONAL LOOSE CHUCK JAW KIT P/N 123486 AVAILABLE FOR THIS NOSE ASSEMBLY CONSISTS OF:
122745 CHUCK JAWS
118207 FOLLOWER
505717 SPRING
122449 LOCATER
122448 RETAINER
- 7 ANVIL ASSEMBLY 119405U CONSISTS OF ANVIL HOLDER 119346 AND DRIVING ANVIL 125445-04.

Alcoa Fastening Systems

Commercial Products
1 Corporate Drive, Kingston, NY 12401

TYPE: SELF-RELEASING

FASTENER: -04 BR

TOOL(S): 206-375

Notes: OBSOLETE
SUPERSEDED BY: 99-3715U

Product
Revision: **B**

US Patent:

Date: 06/25/03

99-1715U

Part Number