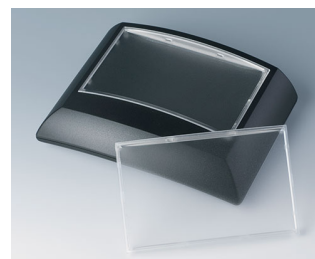
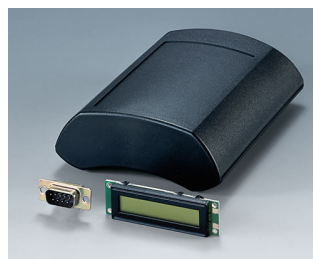


ERGO-CASE

Body contoured electronic enclosures

The unique convex design of these plastic enclosures makes it possible for the user to wear the unit comfortably – whether on their arm, chest or waist.

- unique design for comfortable wearing, holding and operating
- integrated carrying accessories include: wrist strap, belt strap, strap eyelet, belt/pocket clip etc.
- four sizes in two colors
- with/without battery compartment:
battery compartments in sizes M and L for 4 x AA, 1 x 9 V, 2 x 9 V cells with snap-in battery lid, if required, this can be secured by a screw;
size S with integrated supports for 2 x AAA cells
- size XS with soft TPE ring with/without eyelet for carrying accessories
- with flat or high top part for individual installation configurations
- size L also with clip-in display panel in translucent PC or solid ABS
- flat end panel for mounting connectors, switches, LCDs etc.
- top recess for mounting membrane keypads
- wall mounting with removal prevention; easy transmission of data and charging current; contacts as accessories (S, M, L)
- internal screw pillars for mounting PCBs
- protectors absorb impacts and protect surfaces (acc. size M high)



ERGO-CASE

Applications and Examples

- Mobile data recording and transmission
- Fields of medical and laboratory
- Measuring technology
- IoT/IIoT
- Storage and sales logistics
- Digital open and closed-loop control technology
- Health and wellness equipment



Datalogger for neuromonitoring



Dynamic pressure measuring between foot and shoe



Fully automatic safety device for the ascent



Ground microphone



Mobile system for treating inner ear ailments



Multiport with integrated datalogger



Patient display for recumbent ergometers



Psoriasis therapy unit



Wearable voice amplifier

View Customizing Options

What do you still need for your own very personal product? We can supply enclosures and tuning knobs with all necessary modifications for fitting your electronic components. Customizing options for Ergo-Case

ERGO-CASE



Machining



Lacquering



Printing



Laser marking



Decor foils



Special material



RFI/EMI shielding



Installation / Assembly
of accessories

Select Versions



B7000107
ERGO-CASE S, flat
ABS (UL 94 HB)
off-white RAL 9002
3.15"x3.78"x1.26"
IP 54 opt.



B7000109
ERGO-CASE S, flat
ABS (UL 94 HB)
black RAL 9005
3.15"x3.78"x1.26"
IP 54 opt.



B7005107
ERGO-CASE S, high
ABS (UL 94 HB)
off-white RAL 9002
3.15"x3.78"x1.73"
IP 54 opt.



B7005109
ERGO-CASE S, high
ABS (UL 94 HB)
black RAL 9005
3.15"x3.78"x1.73"
IP 54 opt.



B7010107
ERGO-CASE M, flat
ABS (UL 94 HB)
off-white RAL 9002
5.91"x3.94"x1.57"
IP 54 opt.



B7010109
ERGO-CASE M, flat
ABS (UL 94 HB)
black RAL 9005
5.91"x3.94"x1.57"
IP 54 opt.



B7010207
ERGO-CASE M, flat
ABS (UL 94 HB)
off-white RAL 9002
5.91"x3.94"x1.57"
IP 54 opt.



B7010209
ERGO-CASE M, flat
ABS (UL 94 HB)
black RAL 9005
5.91"x3.94"x1.57"
IP 54 opt.

ERGO-CASE



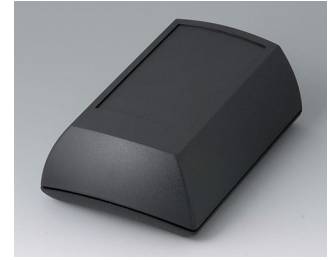
B7015107
ERGO-CASE M, high
ABS (UL 94 HB)
off-white RAL 9002
5.91"x3.94"x2.17"
IP 54 opt.



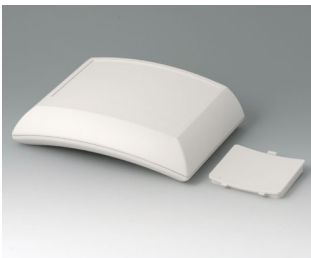
B7015109
ERGO-CASE M, high
ABS (UL 94 HB)
black RAL 9005
5.91"x3.94"x2.17"
IP 54 opt.



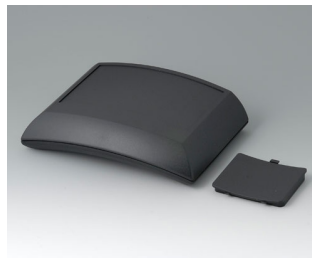
B7015207
ERGO-CASE M, high
ABS (UL 94 HB)
off-white RAL 9002
5.91"x3.94"x2.17"
IP 54 opt.



B7015209
ERGO-CASE M, high
ABS (UL 94 HB)
black RAL 9005
5.91"x3.94"x2.17"
IP 54 opt.



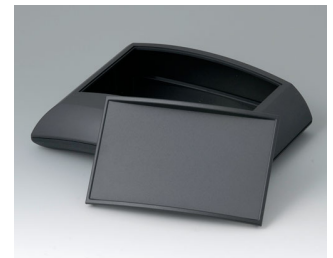
B7020107
ERGO-CASE L, flat
ABS (UL 94 HB)
off-white RAL 9002
5.91"x7.87"x2.13"
IP 54 opt.



B7020109
ERGO-CASE L, flat
ABS (UL 94 HB)
black RAL 9005
5.91"x7.87"x2.13"
IP 54 opt.



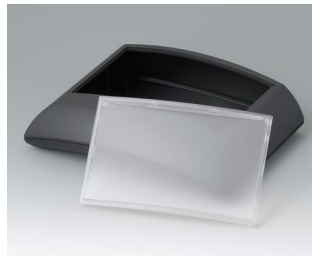
B7020137
ERGO-CASE L, flat
ABS (UL 94 HB)
off-white RAL 9002
5.91"x7.87"x2.13"
IP 40



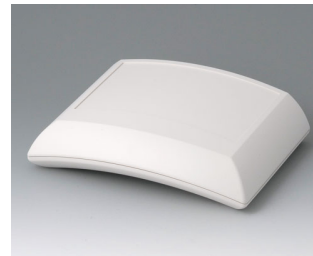
B7020139
ERGO-CASE L, flat
ABS (UL 94 HB)
black RAL 9005
5.91"x7.87"x2.13"
IP 40



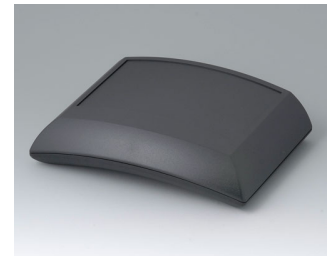
B7020147
ERGO-CASE L, flat
ABS (UL 94 HB)
off-white RAL 9002
5.91"x7.87"x2.13"
IP 40



B7020149
ERGO-CASE L, flat
ABS (UL 94 HB)
black RAL 9005
5.91"x7.87"x2.13"
IP 40



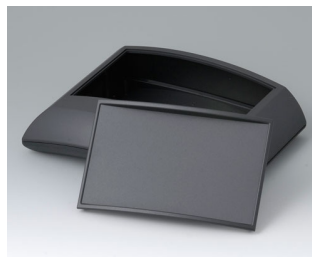
B7020207
ERGO-CASE L, flat
ABS (UL 94 HB)
off-white RAL 9002
5.91"x7.87"x2.13"
IP 54 opt.



B7020209
ERGO-CASE L, flat
ABS (UL 94 HB)
black RAL 9005
5.91"x7.87"x2.13"
IP 54 opt.



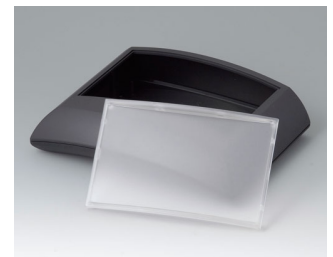
B7020237
ERGO-CASE L, flat
ABS (UL 94 HB)
off-white RAL 9002
5.91"x7.87"x2.13"
IP 40



B7020239
ERGO-CASE L, flat
ABS (UL 94 HB)
black RAL 9005
5.91"x7.87"x2.13"
IP 40



B7020247
ERGO-CASE L, flat
ABS (UL 94 HB)
off-white RAL 9002
5.91"x7.87"x2.13"
IP 40

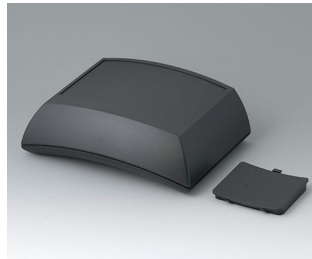


B7020249
ERGO-CASE L, flat
ABS (UL 94 HB)
black RAL 9005
5.91"x7.87"x2.13"
IP 40

ERGO-CASE



B7025107
ERGO-CASE L, high
ABS (UL 94 HB)
off-white RAL 9002
5.91"x7.87"x2.72"
IP 54 opt.



B7025109
ERGO-CASE L, high
ABS (UL 94 HB)
black RAL 9005
5.91"x7.87"x2.72"
IP 54 opt.



B7025137
ERGO-CASE L, high
ABS (UL 94 HB)
off-white RAL 9002
5.91"x7.87"x2.72"
IP 40



B7025139
ERGO-CASE L, high
ABS (UL 94 HB)
black RAL 9005
5.91"x7.87"x2.72"
IP 40



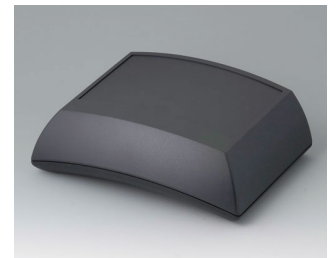
B7025147
ERGO-CASE L, high
ABS (UL 94 HB)
off-white RAL 9002
5.91"x7.87"x2.72"
IP 40



B7025149
ERGO-CASE L, high
ABS (UL 94 HB)
black RAL 9005
5.91"x7.87"x2.72"
IP 40



B7025207
ERGO-CASE L, high
ABS (UL 94 HB)
off-white RAL 9002
5.91"x7.87"x2.72"
IP 54 opt.



B7025209
ERGO-CASE L, high
ABS (UL 94 HB)
black RAL 9005
5.91"x7.87"x2.72"
IP 54 opt.



B7025237
ERGO-CASE L, high
ABS (UL 94 HB)
off-white RAL 9002
5.91"x7.87"x2.72"
IP 40



B7025239
ERGO-CASE L, high
ABS (UL 94 HB)
black RAL 9005
5.91"x7.87"x2.72"
IP 40



B7025247
ERGO-CASE L, high
ABS (UL 94 HB)
off-white RAL 9002
5.91"x7.87"x2.72"
IP 40



B7025249
ERGO-CASE L, high
ABS (UL 94 HB)
black RAL 9005
5.91"x7.87"x2.72"
IP 40



B7040217
ERGO-CASE XS
ABS (UL 94 HB)
off-white RAL 9002
3.23"x2.20"x0.94"
IP 42



B7040219
ERGO-CASE XS
ABS (UL 94 HB)
black RAL 9005
3.23"x2.20"x0.94"
IP 42



B7040227
ERGO-CASE XS
ABS (UL 94 HB)
off-white RAL 9002
3.23"x2.20"x0.94"
IP 42



B7040229
ERGO-CASE XS
ABS (UL 94 HB)
black RAL 9005
3.23"x2.20"x0.94"
IP 42

ERGO-CASE

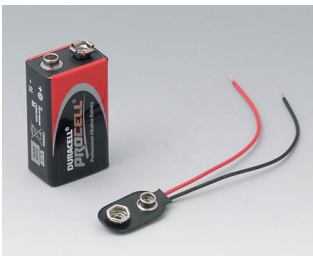


B7040237
ERGO-CASE XS
ABS (UL 94 HB)
off-white RAL 9002
3.23"x2.20"x0.94"
IP 42

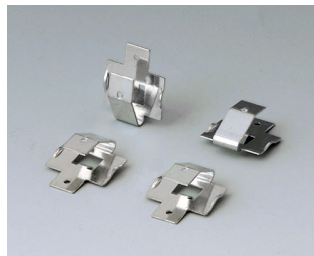


B7040239
ERGO-CASE XS
ABS (UL 94 HB)
black RAL 9005
3.23"x2.20"x0.94"
IP 42

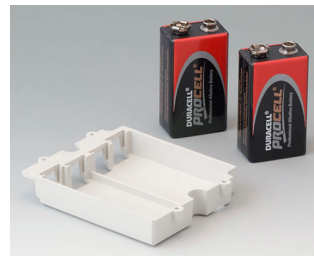
Accessory "battery"



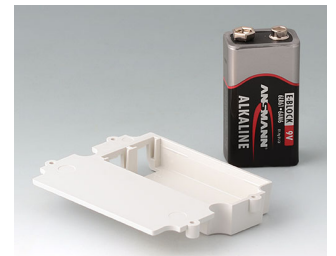
A9160003
Plug-in contact, 1 x 9 V



A9161002
Set of battery clips, 2 x 9 V or 4 x AA
Steel
tin-plated



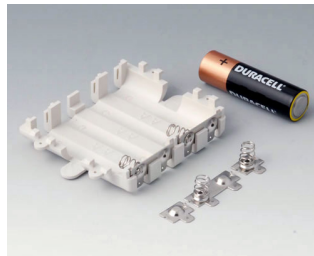
A9174002
Battery compartment, 2 x 9 V
ABS (UL 94 HB)
off-white RAL 9002



A9174003
Battery compartment, 1 x 9 V
ABS (UL 94 HB)
off-white RAL 9002



A9174006
Set of battery clips, 1 x 9 V
Steel
tin-plated



A9345217
Set of battery compartment, 4 x AA
ABS (UL 94 HB)
off-white RAL 9002

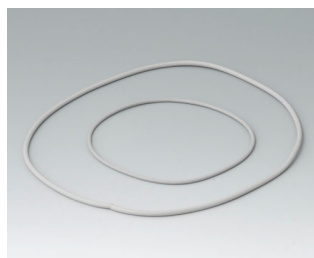


B7100002
Set of battery clips, 2 x AAA

Accessory "protection"



B7100005
Sealing S



B7110001
Sealing kit M

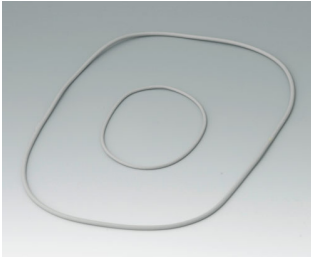


B7110005
Sealing M

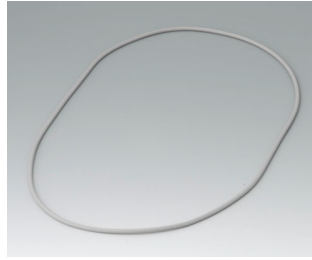


B7115108
Protector M, high
TPE
volcano

ERGO-CASE

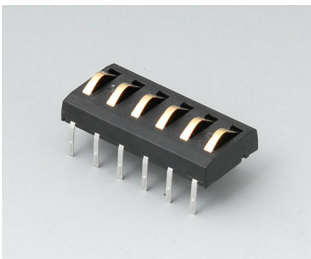


B7120001
Sealing kit L



B7120005
Sealing L

Accessory "wall/holder"



A9178007
Contacts, male
gold-plated



B7110028
Fastening elements L / M / S
PA 6
volcano



B7110048
Wall suspension elements S / M
PA 6
volcano



B7120048
Wall suspension elements L
PA 6
volcano

Accessory "carrying"



A9100001
Ring eyelet
PA 6
volcano



B7110028
Fastening elements L / M / S
PA 6
volcano



B7110107
Belt / pocket clip
PA 6
off-white RAL 9002



B7110109
Belt / pocket clip
PA 6
black RAL 9005



B7110129
Belt strap
black
17.72"x1.38"



B7110139
Belt strap
black
47.24"x1.18"



B7110149
Belt strap
black
59.06"x1.18"



B9100033
Wrist strap
black
11.02"

ERGO-CASE



B9100043
Hand strap, woven
black
7.87"



B9100053
Carrying strap, textile
black
35.43"x0.59"



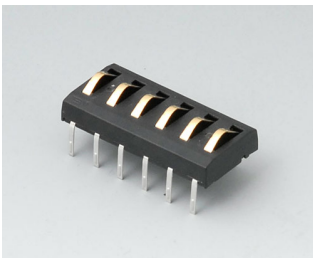
B9100063
Carrying strap, textile
black
33.86"

Accessory "screws"

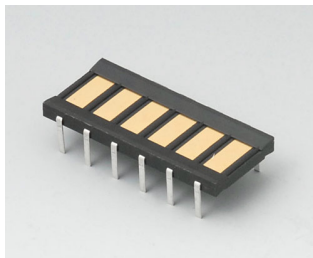


A0305031
Self-tapping screws 0.098" x
0.236" (PZ1)

Accessory



A9178007
Contacts, male
gold-plated



A9178008
Contacts, female
gold-plated

Subject to technical modification without notice. © by OKW Gehäusesysteme, Buchen/Germany.