



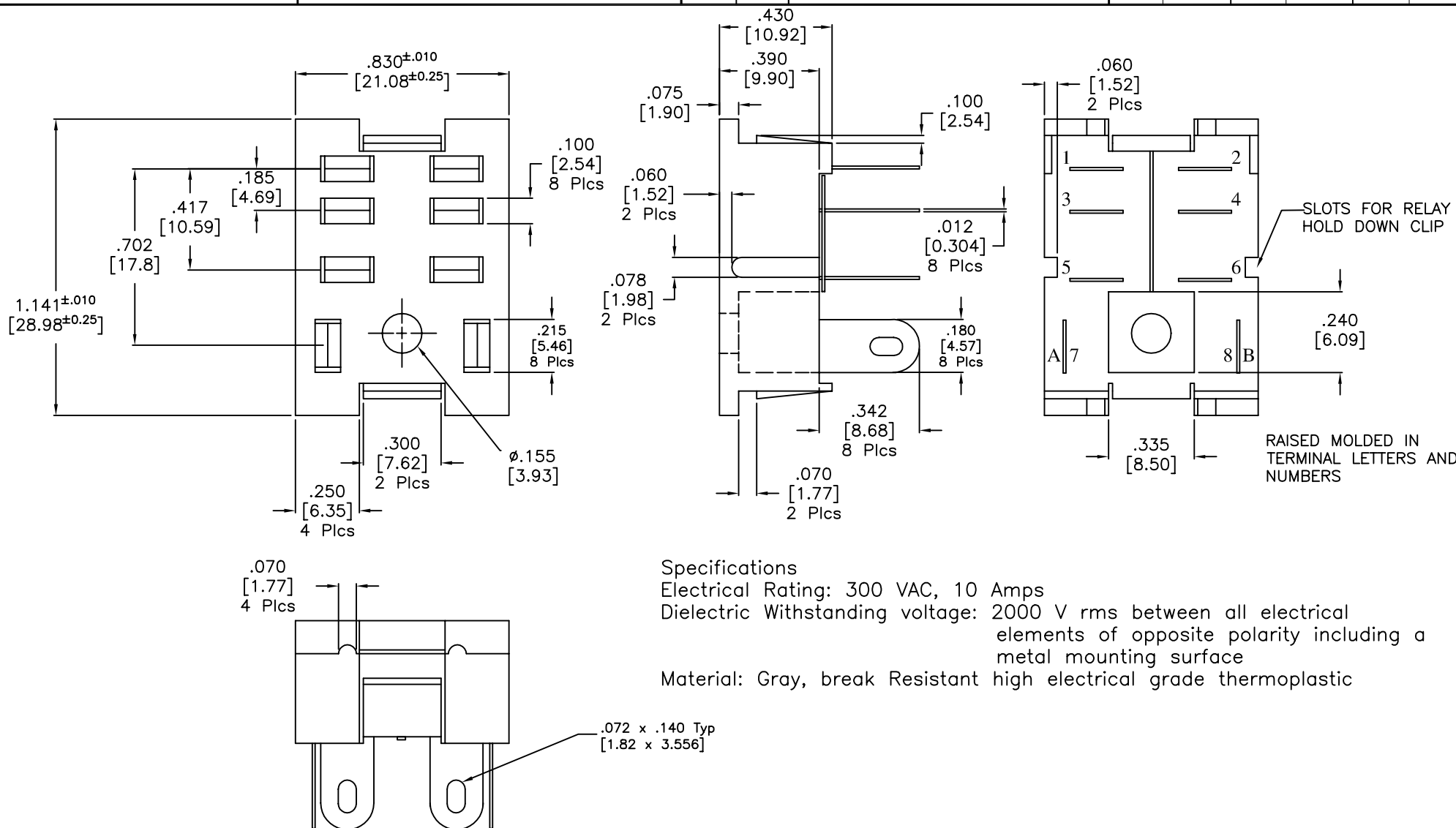
ALL RIGHTS RESERVED. NO PORTION OF THIS PUBLICATION, WHETHER IN WHOLE OR IN PART CAN BE REPRODUCED WITHOUT THE EXPRESS WRITTEN CONSENT OF SPC TECHNOLOGY.

SPC-F005.DWG

REVISIONS

DOC. NO. SPC-F005 * Effective: 7/8/02 * DCP No: 1398

DCP #	REV	DESCRIPTION	DRAWN	DATE	CHECKD	DATE	APPRVD	DATE
844	A	RELEASED	JWM	5/20/03	HO	5/20/03	DJC	5/20/03



DISCLAIMER:
 ALL STATEMENTS AND TECHNICAL INFORMATION CONTAINED HEREIN ARE BASED UPON INFORMATION AND/OR TESTS WE BELIEVE TO BE ACCURATE AND RELIABLE. SINCE CONDITIONS OF USE ARE BEYOND OUR CONTROL, THE USER SHALL DETERMINE THE SUITABILITY OF THE PRODUCT FOR THE INTENDED USE AND ASSUME ALL RISK AND LIABILITY WHATSOEVER IN CONNECTION THEREWITH.

TOLERANCES:

Tolerances Unless
 Otherwise Specified:
 Decimal=±.005
 Fractional=±.010

DRAWN BY:

Jeff McVicker

DATE:

5/20/03

CHECKED BY:

Hisham Odish

DATE:

5/20/03

APPROVED BY:

Daniel Carey

DATE:

5/20/03

DRAWING TITLE:

Relay Socket, 8 Pin, Chassis Mount, Solder Terminals

SIZE DWG. NO.

A

SPC9802

ELECTRONIC FILE

95B7506.dwg

REV

A

SCALE: NTS

U.O.M.: INCHES [mm]

SHEET: 1 OF 1