

PLEASE CHECK WWW.MOLEX.COM FOR LATEST PART INFORMATION

Part Number:

50-36-1679

Status:

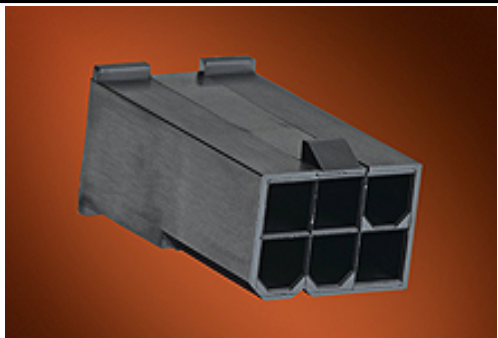
Active

Overview:

Mini-Fit Jr.™ Power Connectors

Description:

Mini-Fit Jr.™ Plug Housing, Dual Row without Panel Mount Ears, PA Polyamide Nylon 6/6, UL 94V-0, 4 Circuits, Glow Wire Compatible



Series

image - Reference only

Documents:

- [3D Model](#)
- [Drawing \(PDF\)](#)
- [Product Specification PS-45750-001 \(PDF\)](#)
- [Product Specification PS-5556-001 \(PDF\)](#)
- [Packaging Specification PK-5559-002 \(PDF\)](#)
- [Test Summary TS-5556-002 \(PDF\)](#)
- [RoHS Certificate of Compliance \(PDF\)](#)

General

Product Family	Crimp Housings
Series	5559
Application	Power, Wire-to-Board, Wire-to-Wire
Comments	Current = 13A max. per circuit when header is mated to a receptacle loaded with 45750 series terminals crimped to 16 AWG wire. . See Molex product specification PS-45750-001 for additional current derating information.<P><P>This Molex product is manufactured from material that has the following ratings, tested by independent agencies :. a) A Glow Wire Ignition Temperature (GWIT) of at least 775 deg C per IEC60695-2-13.. b) A Glow Wire Flammability Index (GWFI) above 850 deg C per IEC 60695-2-12.and hence complies with the requirements set out in the International Standard IEC 60335-1 5th edition - household and similar electrical appliances - safety; section 30 Resistance to heat and fire. <P><P> The customers using this product must determine its suitability for use in their particular application through testing or other acceptable means as described in end-product glow-wire flammability test standard IEC 60695-2-11 and any applicable product end-use standard(s). <P> If it is determined during the customer’s evaluation of suitability, that higher performance is required, please contact Molex for possible product options.
Overview	Mini-Fit Jr.™ Power Connectors
Product Name	Mini-Fit Jr.™
UPC	800756803517

Physical

Breakaway	No
Circuits (maximum)	4
Color - Resin	Black
Gender	Plug
Glow-Wire Compliant	Yes
Keying to Mating Part	None
Lock to Mating Part	Yes
Material - Resin	Nylon
Net Weight	1.417/g
Number of Rows	2
Packaging Type	Bag
Panel Mount	No

EU RoHS

ELV and RoHS  
Compliant  
REACH SVHC  
Contains SVHC: No  
Low-Halogen Status  
Low-Halogen

China RoHS



Need more information on product environmental compliance?

Email [productcompliance@molex.com](mailto:productcompliance@molex.com)  
For a multiple part number RoHS Certificate of Compliance, [click here](#)

Please visit the [Contact Us](#) section for any non-product compliance questions.

Search Parts in this Series

5559Series

Mates With

5557 Receptacle Housing

Use With

5558 Male Terminal

Pitch - Mating Interface	4.20mm
Pitch - Termination Interface	4.20mm
Polarized to Mating Part	Yes
Ports	1
Stackable	No
Temperature Range - Operating	-40°C to +105°C
<b>Electrical</b>	
Current - Maximum per Contact	13A
<b>Material Info</b>	
Old Part Number	5559-04P1-225
<b>Reference - Drawing Numbers</b>	
Packaging Specification	PK-5559-002
Product Specification	PS-45750-001, PS-5556-001
Sales Drawing	SD-5559-425
Test Summary	TS-5556-002

This document was generated on 06/30/2014

PLEASE CHECK [WWW.MOLEX.COM](http://WWW.MOLEX.COM) FOR LATEST PART INFORMATION

# Mouser Electronics

Authorized Distributor

Click to View Pricing, Inventory, Delivery & Lifecycle Information:

Molex:

50-36-1679