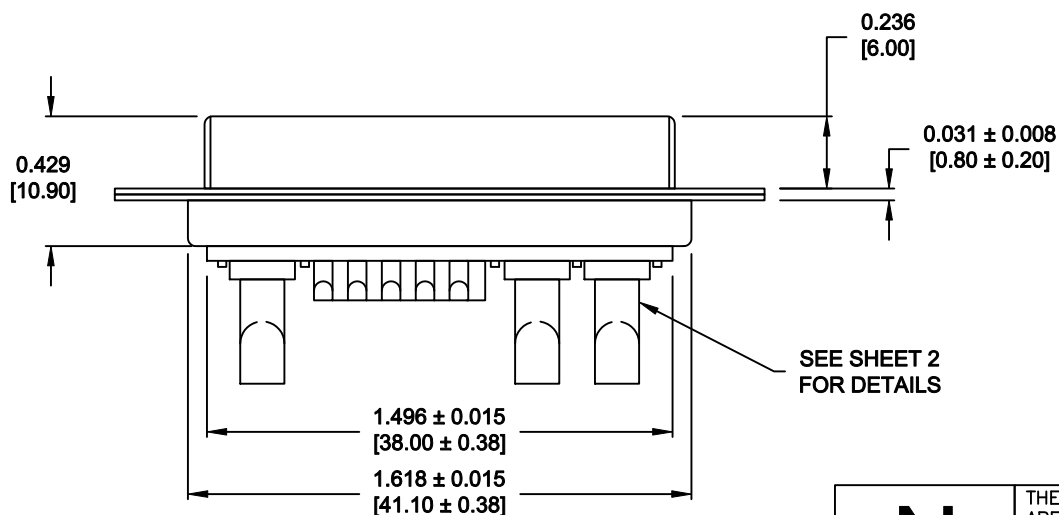
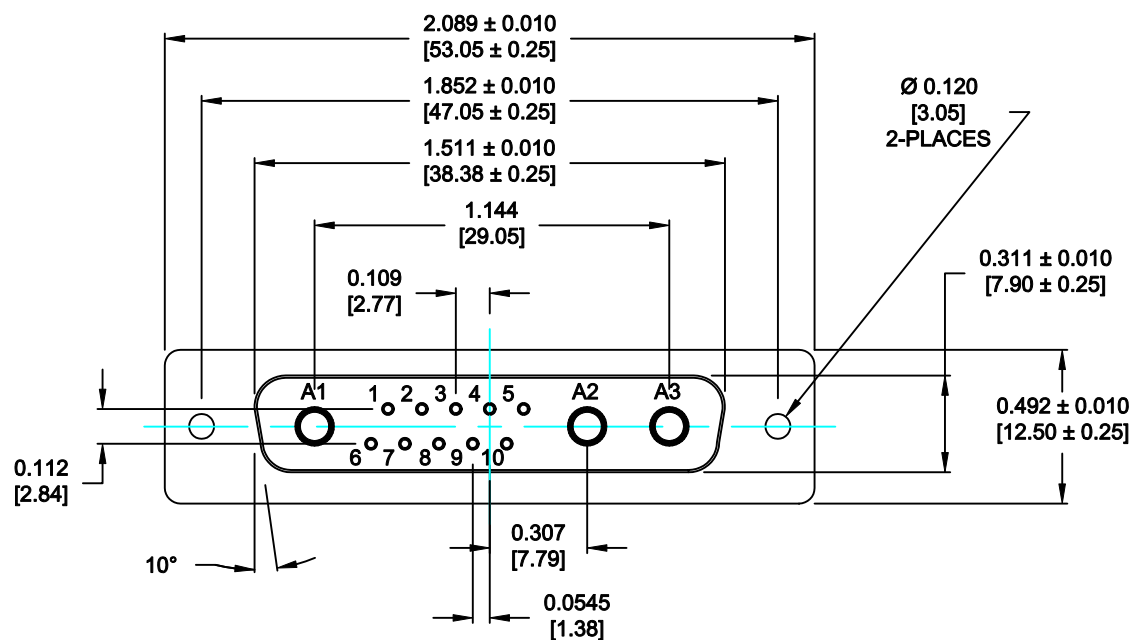


DESCRIPTION: POWER / SIGNAL - SOLDER CUP - FEMALE



## SPECIFICATIONS:

### ELECTRICAL:

INSULATOR RESISTANCE:	5 G OHMS Min.
DIELECTRIC WITHSTANDING:	1,000VACfor 1 MINUTE
OPERATING TEMPERATURE:	-55° C ~ +155° C
POWER CONTACT RESISTANCE:	1.0 Milliohms Max.
SIGNAL CONTACT RESISTANCE:	2.7 Milliohms Max.
POWER PINS:	SEE PART No. BELOW
SIGNAL PINS:	5 AMPS

### MECHANICAL:

CONTACT INSERTION FORCE:	4.5 Kg Max.
CONTACT SEPARATOR FORCE:	0.3Kg Min.

### MATERIALS:

CONTACTS:	COPPER ALLOY
INSULATOR:	PBT UL94V-0 RATED, BLK
	230°C PROCESS TEMP.
SHELL:	STEEL
SEAL:	F04 FLEXIBLE ADHESIVE

### FINISH:

SHELL:	NICKEL
CONTACTS:	FULL GOLD FLASH

680S13W3203LYY1

20 = 20 AMPS  
40 = 40 AMPS

MEETS IP67 STANDARDS

(SEE PAGE 2 FOR SEALING DETAILS)

RoHS COMPLIANT

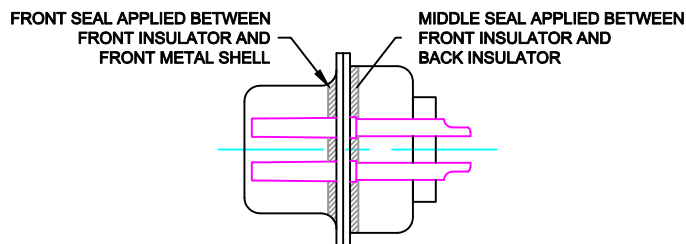
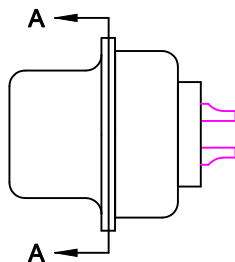


THESE DRAWINGS AND SPECIFICATIONS ARE THE PROPERTY OF NorComp AND SHALL NOT BE REPRODUCED, COPIED OR USED AS THE BASIS FOR THE MANUFACTURE OF SALE OF APPARATUS WITHOUT WRITTEN PERMISSION.

NorComp

DRAWN:	P. JENKINS	DATE:	09-13-11
CHECKED:		DATE:	
SCALE:	N.T.S.	SHEET	OF
		1	2
DWG NO.	680S13W3203LYY1	REV	0

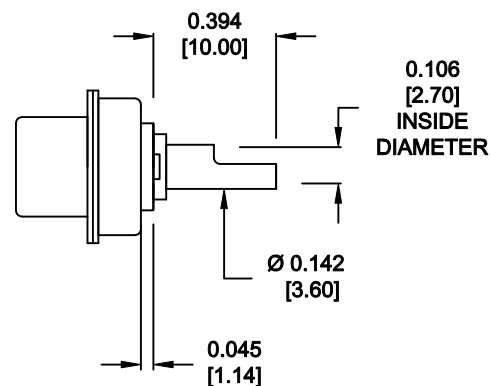
DESCRIPTION: 680 SERIES CONTACTS



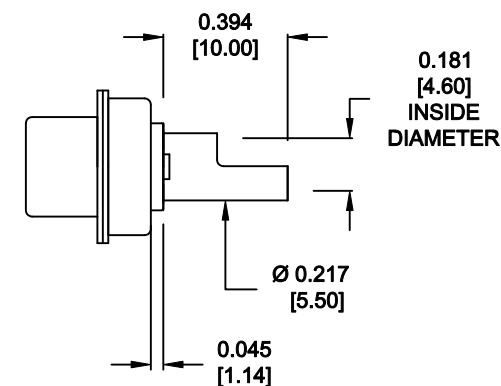
DETAIL A-A  
SHOWN FOR REFERENCE ONLY

RoHS COMPLIANT

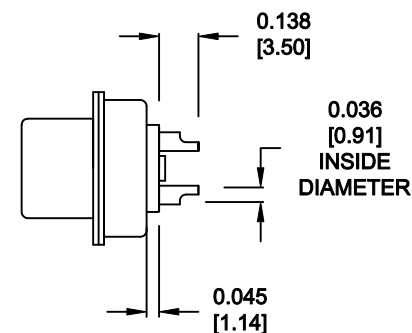
NOTE: SIGNAL AND POWER CONTACTS  
COME PRE-LOADED INTO INSULATORS



20 AMP POWER CONTACTS  
ACCEPTS UP TO 12 AWG WIRE



40 AMP POWER CONTACTS  
ACCEPTS UP TO 8 AWG WIRE



SIGNAL CONTACTS  
ACCEPTS UP TO 20 AWG WIRE



THESE DRAWINGS AND SPECIFICATIONS  
ARE THE PROPERTY OF NorComp AND  
SHALL NOT BE REPRODUCED, COPIED  
OR USED AS THE BASIS FOR THE  
MANUFACTURE OF SALE OF APPARATUS  
WITHOUT WRITTEN PERMISSION.

DRAWN:  
**P. JENKINS**

DATE:  
**09-13-11**

CHECKED:

DATE:

**NorComp**

SCALE:  
**N.T.S.**

SHEET  
**2** OF  
**2**

REV  
**0**

DWG NO. **680S13W3203LYY1**

# Mouser Electronics

Authorized Distributor

Click to View Pricing, Inventory, Delivery & Lifecycle Information:

NorComp:

[680S13W3203L201](#) [680S13W3203L401](#)