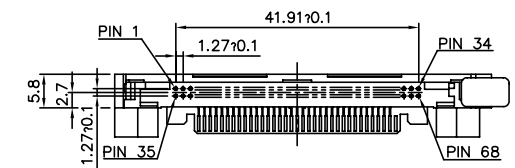
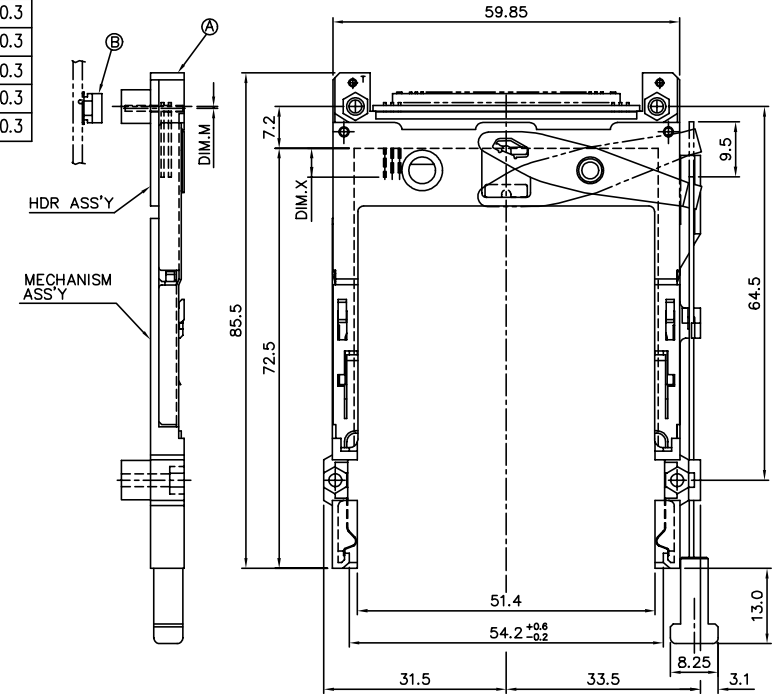




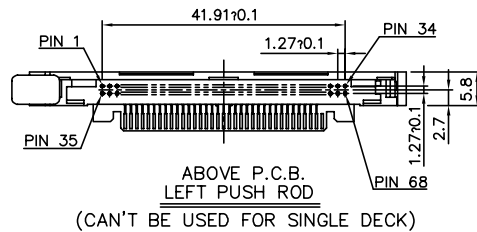
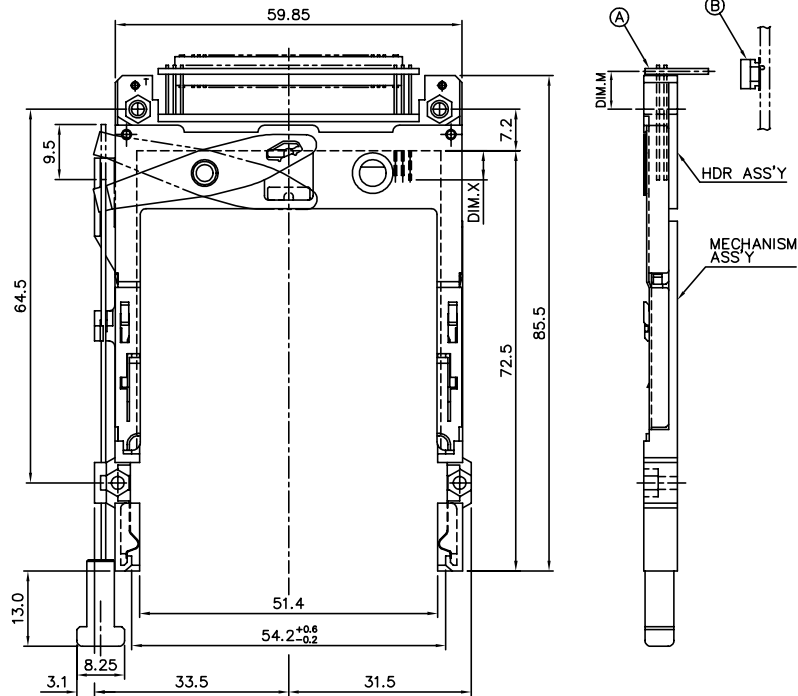
PRODUCT NO.	DIM.M
61125-020CA/020CALF	-0.3
61125-220CA/220CALF	2.15
61125-040CA/040CALF	-0.3
61125-050CA/050CALF	-0.3
61125-050CAN/050CANLF	-0.3
61125-020CAC/020CACLF	-0.3
61125-040CAC/040CACLF	-0.3
61125-050CAC/050CACLF	-0.3



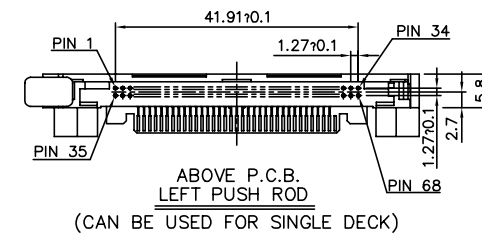
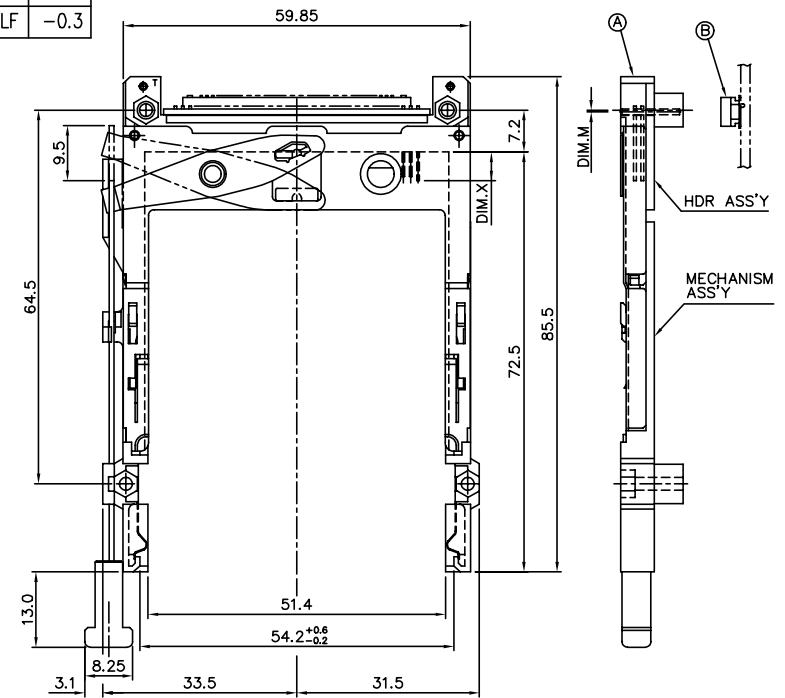
ABOVE P.C.B.  
RIGHT PUSH ROD  
                      
(CAN BE USED FOR SINGLE DECK)

mat'l. code				surface <input checked="" type="checkbox"/> tolerance				projection				product family			
				ISO1302 <input checked="" type="checkbox"/> ISO1101 ISO406								PCMCIA			
ltr ecn nodr date				tolerances unless otherw				specified				title			
J	N05-0063	WB	03/04/05	<div>angle</div> <div><div>±0.30</div></div> <div>line</div>				<div>MM</div>				EJECTOR HEADER ASS'Y 3.3V, SMT TYPE 1/2/3			
K	N05-0140	WB	05/31/05												
L	BLX-W-011397	ZK	04/02/12												
				dr WENDY CHEN 07/11/95								dwg no sheet 1 of 6 size			
				engr JOSEPH HSIA 07/11/95								61125 A4			
				chr JOSEPH HSIA 07/11/95											
				appd JENN TSAO 07/11/95											
sheet		revision		L	L	L	L	L	L	type Product Customer Drawing					
index		sheet		1	2	3	4	5	6						

PRODUCT NO.	DIM.M
61125-105CA/105CALF	10.0
61125-125CA/125CALF	6.55
61125-145CA/145CALF	6.55
61125-155CA/155CALF	6.55

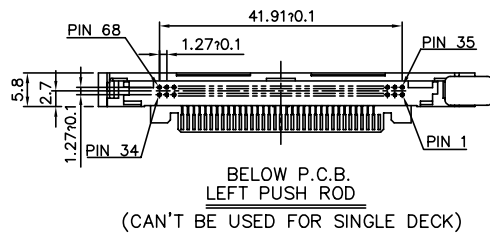
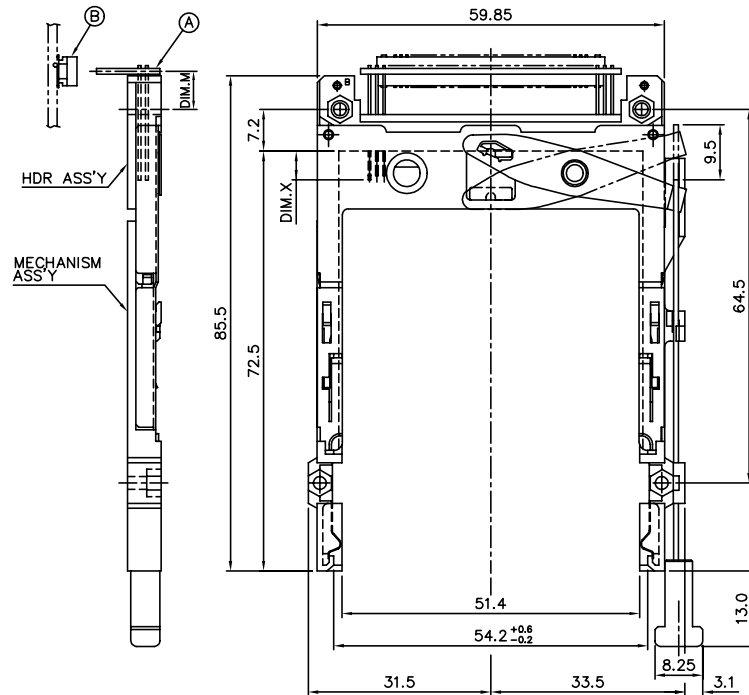


PRODUCT NO.	DIM.M
61125-120CA/120CALF	-0.3
61125-140CA/140CALF	-0.3
61125-150CA/150CALF	-0.3

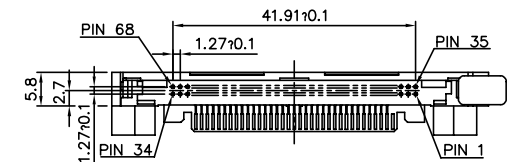
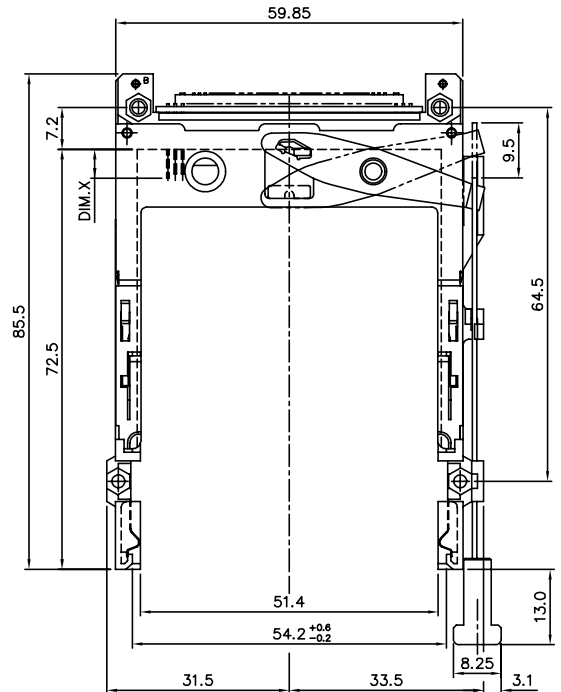
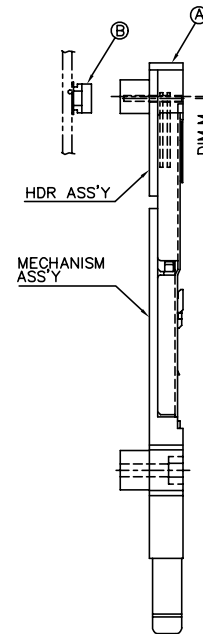


mat'l. code	surface ISO1302	tolerance ISO1101 ISO406	projection MM	product family PCMCIA
ltr ecn nodr	date	tolerances unless otherwise specified	scale 1.2	EJECTOR HEADER ASS'Y 3.3V, SMT TYPE 1/2/3
L		angle 0°±2'	MM	dwg no
		dr WENDY CHEN 07/11/95	scale 1.2	sheet 2 of 6
		engr JOSEPH HSIA 07/11/95	FCI	size A4
		chr JOSEPH HSIA 07/11/95		61125
		appd JENN TSAO 07/11/95		type Product Customer Drawing
sheet index	revision sheet			

PRODUCT NO.	DIM.M
61125-605CA/650CALF	10.0
61125-625CA/625CALF	6.55
61125-645CA/645CALF	6.55
61125-655CA/655CALF	6.55



PRODUCT NO.	DIM.M
61125-620CA/620CALF	-0.3
61125-640CA/640CALF	-0.3
61125-650CA/650CALF	-0.3

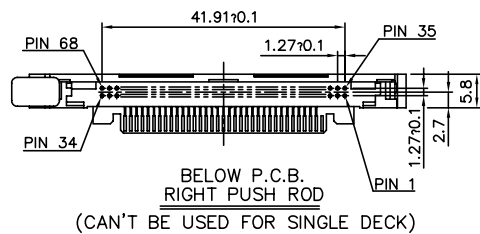
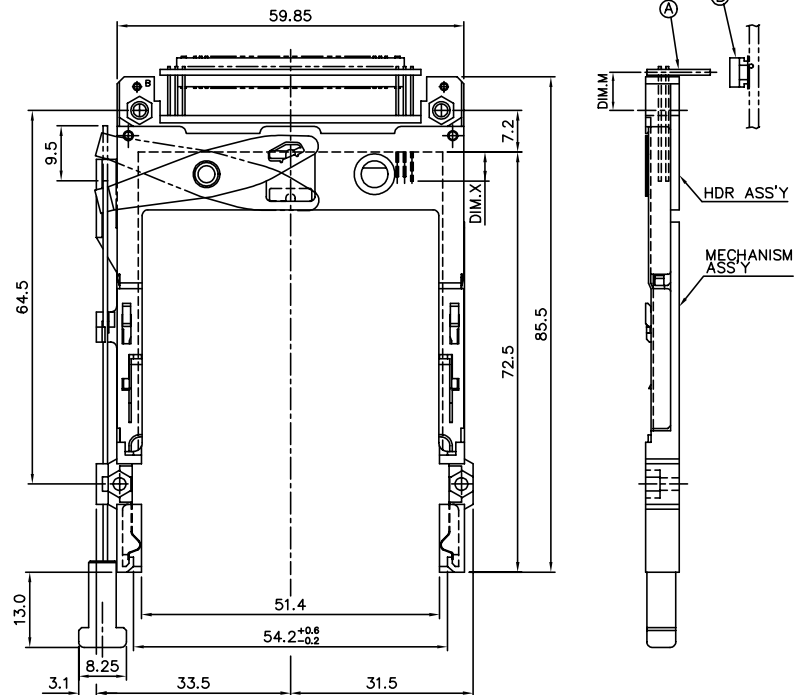


BELOW P.C.B.  
LEFT PUSH ROD

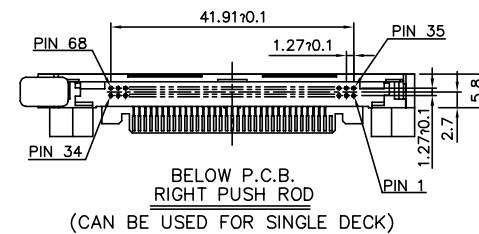
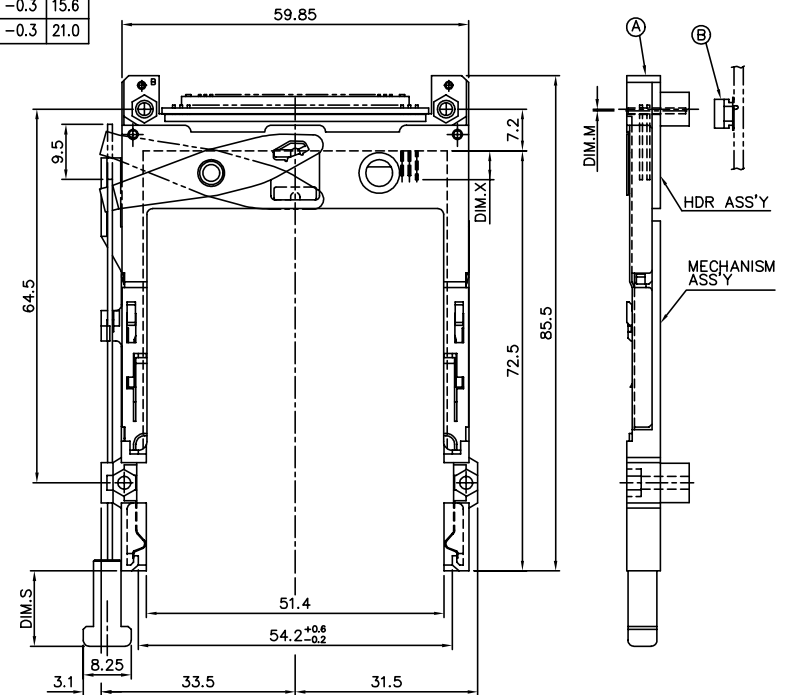
(CAN BE USED FOR SINGLE DECK)

mat'l. code	surface ISO1302	tolerance ISO1101 ISO406	projection ASME Y14.5	product family PCMCIA
ltr ecn nodr date	tolerances unless otherwise specified			EJECTOR HEADER ASS'Y 3.3V, SMT TYPE 1/2/3
L	angle 0°±2'	±0.30	MM	scale 1.2
	dr WENDY CHEN	07/11/95		
	engr JOSEPH HSIA	07/11/95		
	chr JOSEPH HSIA	07/11/95		
	appd JENN TSAO	07/11/95		
sheet index	revision sheet			dwg no 61125 type Product Customer Drawing
				sheet 3 of 6 size A4

PRODUCT NO.	DIM.M
61125-505CA/505CALF	10.0
61125-525CA/525CALF	6.55
61125-545CA/545CALF	6.55
61125-555CA/555CALF	6.55



PRODUCT NO.	DIM.M	DIM.S
61125-520CA/520CALF	-0.3	13.0
61125-540CA/540CALF	-0.3	13.0
61125-550CA/550CALF	-0.3	15.6
61125-520DA/520DALF	-0.3	21.0
61125-520FA/520FALF	-0.3	21.0



mat'l. code	surface ISO1302	tolerance ISO1101 ISO406	projection ASME Y14.5	product family PCMCIA
ltr ecn nodr date	tolerances unless otherwise specified			title EJECTOR HEADER ASS'Y 3.3V, SMT TYPE 1/2/3
L	angle 0°±2'	±0.30	MM	scale 1.2
dr	WENDY CHEN	07/11/95	FCI	dwg no
eng	JOSEPH HSIA	07/11/95		sheet 4 of 6
chr	JOSEPH HSIA	07/11/95		size A4
app	JENN TSAO	07/11/95	type Product Customer Drawing	
sheet index	revision sheet			

## NOTES:

- 8mm MIN. CARD EJECT.
- EJECT TRAVEL: 9.5mm
- PUSH ROD LOCATION AND P.C.B. SIDE ARE AS APPEARS INSTALLED.

## 4. MATERIAL

## 4.1 HEADER ASS'Y:

PLASTIC : HOUSING ...HIGH TEMPERATURE THERMOPLASTIC UL94V-0 BLACK  
PIN : PHOSPHOR BRONZE  
PCB : FR4

## 4.2 EJECT MECHANISM ASS'Y:

PLASTIC : GUIDE: HIGH TEMPERATURE THERMOPLASTIC UL94V-0 BLACK  
: BUTTON: HIGH TEMPERATURE THERMOPLASTIC UL94V-0 BLACK  
PLATE AND PUSH ROD : STAINLESS  
EMI CONTACT: PHOSPHOR BRONZE

## 5. FINISH (PIN)

UNDER PLATING : 0.5μm MIN. Ni  
CONTACT AREA : 0.076 μm MIN. GOLD

SOLDER TAIL ( FOR TIN LEAD OPTION ) : 2.5μm MIN. Sn-Pb  
SOLDER TAIL ( FOR LEAD FREE OPTION ) : 2.5μm MIN. PURE TIN

## 6. DIM "X"

4.25±0.1	3.5±0.1	5.0±0.1
OTHERS	36,67	1,17,34,35,51,68

## 7. FOR P/N: 61125-050CAN AND 61125-050CANLF:

- TIGHTENING TORQUE OF SCREW: 1.5 ~ 2.0 Kgf-cm
- LUBRICANT SHOULD BE SPREAD TO MATING AREA OF PINS.





- IF LEAD FREE P.N. THE HOUSING WILL WITHSTAND EXPOSURE TO 260°C PEAK TEMPERATURE FOR 10 SECONDS IN A WAVE SOLDER APPLICATION WITH A 1.00MM MINIMUM THICK CIRCUIT BOARD.
- IF LEAD FREE P/N. THE PRODUCT MEETS EUROPEAN UNION DIRECTIVES AND OTHER COUNTRY REGULATIONS AS DISCRIBLED IN GS-22-008
- LEAD FREE P/N PACKAGING MEETS GS-14-920 SPECIFICATION
- PART NUMBER 61125-\*\*\*CAC, -\*\*\*CACLIF IS FOR CISCO
- PRODUCT SPEC: 110-263







## ORDERING INFORMATION

NAME	PART NO.		Q'TY
Ⓐ EJECT HEADER ASS'Y	61125-*****	61125-*****LF	1
Ⓑ MATING RECEPTACLE	91931-31169	91931-31169LF	1

mat'l. code	surface	tolerance	projection	product family
ISO1302	ISO1101 ISO406			PCMCIA
l t r e c n n o d r	date	tolerances unless otherwise specified		title
L		angle	MM	EJECTOR HEADER ASS'Y
		0°±2'	scale 1.2	3.3V, SMT TYPE 1/2/3
	dr WENDY CHEN	07/11/95	FCI	dwg no
	eng JOSEPH HSIA	07/11/95		sheet 5 of 6
	chr JOSEPH HSIA	07/11/95		size A4
	app JENN TSAO	07/11/95		type Product Customer Drawing
sheet	revision			
index	sheet			

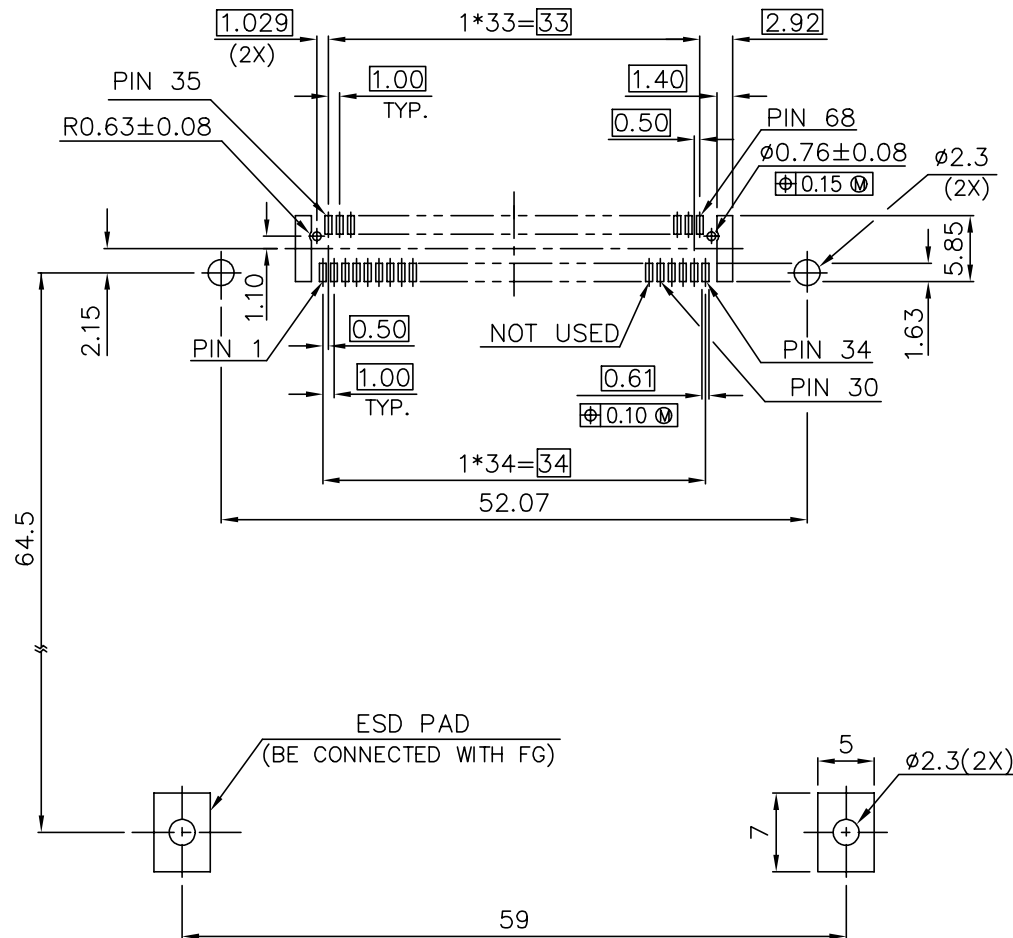
DESCRIPTION : ABOVE PCB, DECK AND PUSH ROD LOCATION ARE AS VIEW BY USER.

LOWER DECK					Ⓑ MATING RECEPTACLE	MOUNT STYLE TO PCB AND PUSH ROD SIDE
Ⓐ PRODUCT NO.	STAND-OFF HIGH DIM. L	PUSH ROD LOCATION ⓐ	P.C.B. SIDE ⓐ	P.C.B LAYOUT RECOMMENDED		
61125-020CA/020CALF	2.2	RIGHT	ABOVE	P/N: TA-1056	↑  RECEPTACLE PART NUMBER: 91931-31169 91931-31169LF  ↓	
61125-220CA/220CALF	2.2	RIGHT	ABOVE	SEE PAGE 6		
61125-040CA/040CALF	4.3	RIGHT	ABOVE	SEE DRAWING P/N: TA-1056		
61125-050CA/050CALF	5.0					
61125-050CAN/050CANLF	5.0					
61125-020CAC/020CACLIF	2.2					
61125-040CAC/040CACLIF	4.3					
61125-050CAC/050CACLIF	5.0					
61125-120CA/120CALF	2.2	LEFT	BELOW	SEE DRAWING P/N: TA-1056		
61125-140CA/140CALF	4.3					
61125-150CA/150CALF	5.0					
61125-520CA/520CALF	2.2	RIGHT	BELOW	SEE DRAWING P/N: TA-1056		
61125-520FA/520FALF	2.2					
61125-520DA/520DALF	2.2					
61125-540CA/540CALF	4.3					
61125-550CA/550CALF	5.0	LEFT	BELOW	SEE DRAWING P/N: TA-1056		
61125-620CA/620CALF	2.2					
61125-640CA/640CALF	4.3					
61125-650CA/650CALF	5.0					

UPPER DECK					
Ⓐ PRODUCT NO.	JOINT WITH LOWER DECK STAND-OFF HIGH(DIM. L)	PUSH ROD LOCATION ③	P.C.B. SIDE ③	Ⓑ MATING RECEPTACLE	MOUNT STYLE TO PCB AND PUSH ROD SIDE
61125-005CA/005CALF	0.0	RIGHT	ABOVE		
61125-025CA/025CALF	2.2				
61125-045CA/045CALF	4.3				
61125-055CA/055CALF	5.0				
61125-025CAC/025CACLIF	2.2				
61125-045CAC/045CACLIF	4.3				
61125-055CAC/055CACLIF	5.0	LEFT	BELOW	RECEPTACLE PART NUMBER: 91931-31169 91931-31169LF	
61125-105CA/105CALF	0.0				
61125-125CA/125CALF	2.2				
61125-145CA/145CALF	4.3				
61125-155CA/155CALF	5.0				
61125-505CA/505CALF	0.0				
61125-525CA/525CALF	2.2	RIGHT	BELOW		
61125-545CA/545CALF	4.3				
61125-555CA/555CALF	5.0				
61125-605CA/605CALF	0.0				
61125-625CA/625CALF	2.2	LEFT	BELOW		
61125-645CA/645CALF	4.3				
61125-655CA/655CALF	5.0				

## NOTES:

- IT CAN'T BE USED FOR SINGLE DECK.
- IT MUST BE ASSEMBLED BY USER FOR DOUBLE DECK APPLICATION.(PLEASE REFER TO P/N 61124)



mat'l. code		surface	tolerance	projection	product family
ISO1302		ISO1101	ISO406	MM	PCMCIA
l	tr	ec	n	o	d
date		tolerances unless otherwise specified		title	
L		angle		scale	
		0° ± 2'		1:2	
dr		WENDY CHEN	07/11/95	EJECTOR HEADER ASS'Y	
eng		JOSEPH HSIA	07/11/95	3.3V, SMT TYPE 1/2/3	
chr		JOSEPH HSIA	07/11/95	61125	
app		JENN TSAO	07/11/95	type Product Customer Drawing	
sheet	revision			dwg no	sheet 6 of 6
index	sheet			61125	A4

# Mouser Electronics

Authorized Distributor

Click to View Pricing, Inventory, Delivery & Lifecycle Information:

FCI:

[61125-005CALF](#) [61125-055CALF](#) [61125-550CALF](#) [61125-620CALF](#) [61125-625CALF](#) [61125-655CALF](#) [61125-155CALF](#) [61125-050CALF](#) [61125-150CALF](#) [61125-020CALF](#) [61125-650CALF](#)