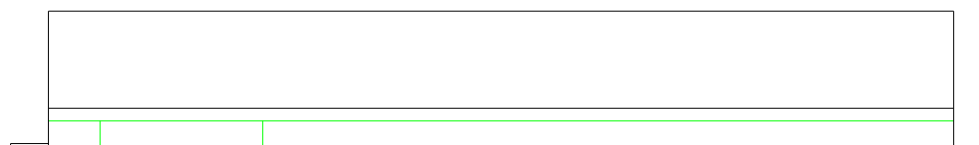
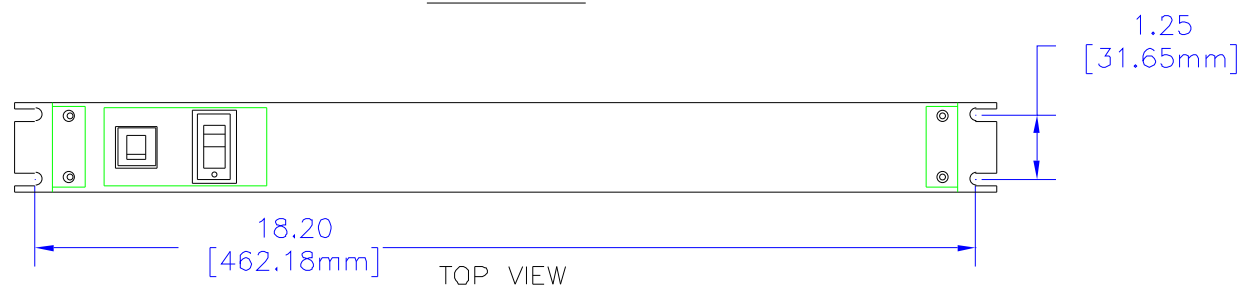


NOTES

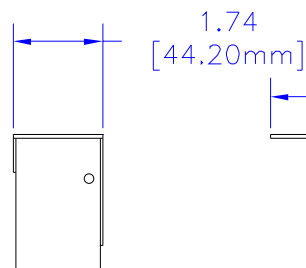
DESIGNED FOR POWER DISTRIBUTION FROM REAR OF UNIT.
TOUGH STEEL CASE AVAILABLE IN ASA 61 GRAY OR BLACK POWDER PAINT.
HEAVY-DUTY POWER CORD - 14/3 SJTW FOR EXTREME TEMPERATURE RANGES. COMES IN 6' OR 15' LONG.
INTEGRAL MOLDED PLUG AVAILABLE IN STRAIGHT BLADE (NEMA 5-15P) OR TWIST-LOCK (NEMA L5-15P) CONFIGURATIONS.
COMES WITH LIGHTED ON/OFF SWITCH.
INCLUDES 15A, 125VAC CIRCUIT BREAKER TO PREVENT LINE OVERLOAD.
CSA CERTIFIED, UL RECONIZED-UNDER THE COMPONENT PROGRAM OF UL



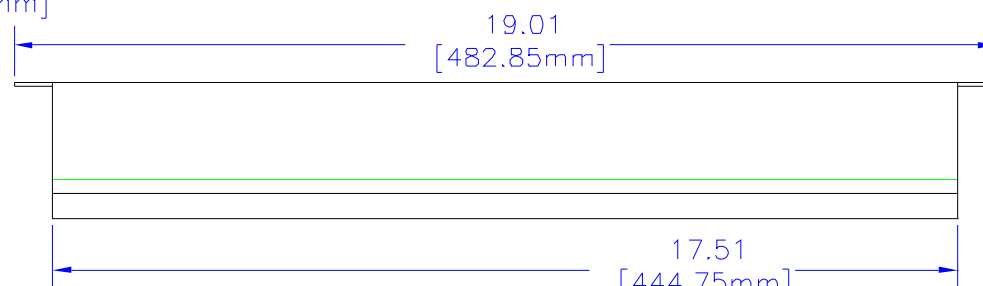
SIDE VIEW



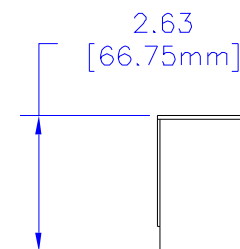
TOP VIEW



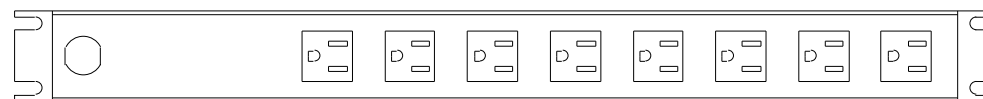
L. END VIEW



SIDE VIEW



R. END VIEW



BOTTOM VIEW

*SEE CATALOG FOR THE COMPLETE PART NUMBER BASED ON THE OPTIONS LISTED IN THE NOTE SECTION

UNLESS OTHERWISE SPECIFIED
DIMENSIONS ARE IN INCHES
X +/- .1
XX +/- .02
XXX +/- .015
DITS +/- .005
ANGLES +/- .5 DEG.
NOTICE
HAMDOR CLAIMS PROPRIETARY RIGHTS TO THE MATERIAL ON THIS DRAWING IT IS INTENDED TO BE USED AS A REFERENCE FOR ENGINEERING INFORMATION ONLY THIS INFORMATION MAY NOT BE USED TO MANUFACTURE PRODUCT WITHOUT WRITTEN PERMISSION FROM HAMMOND MANUFACTURING



**HAMMOND
MANUFACTURING**

WEB: WWW.HAMMONDMFG.COM

TITLE
HAMMOND RACK MOUNT
POWER PANELS
DRAWN BY MJM DATE 02/09/01
SCALE PAGE 1 OF 1
PART NUMBER
1583H8****

Mouser Electronics

Authorized Distributor

Click to View Pricing, Inventory, Delivery & Lifecycle Information:

Hammond:

[1583H8D1BK](#) [1583H8A1BK](#) [1583H8A1](#) [1583H8C1](#) [1583H8C1BK](#) [1583H8B1BK](#) [1583H8D1](#) [1583H8B1](#)