

**Ordering number CP12413_LOS-D**

Family	Leila	FWHM	13 degrees
Type	Assembly	Efficiency	91 %
LED	NF2x757A	cd/Im	11.900
Color	White	Gerber File	Available
Diameter	21.6 mm		
Height	14.3 mm		
Style	Round		
Optic Material	PMMA		
Holder Material	PC		
Fastening	Pin, glue		
Status	On production		

**Ordering number CP12415_LOS-O-90**

Family	Leila	FWHM	14+39 degrees
Type	Assembly	Efficiency	94 %
LED	NF2x757A	cd/Im	4.700
Color	White	Gerber File	Available
Diameter	21.6 mm		
Height	14.3 mm		
Style	Round		
Optic Material	PMMA		
Holder Material	PC		
Fastening	Pin, glue		
Status	On production		

**Ordering number CP12414_LOS-M**

Family	Leila	FWHM	25 degrees
Type	Assembly	Efficiency	92 %
LED	NF2x757A	cd/Im	4.900
Color	White	Gerber File	Available
Diameter	21.6 mm		
Height	14.3 mm		
Style	Round		
Optic Material	PMMA		
Holder Material	PC		
Fastening	Pin, glue		
Status	On production		

NOTE: The typical divergence will be changed by different color, chip size and chip position tolerance. The typical total divergence is the full angle measured where the luminous intensity is half of the peak value.



PRODUCT DATASHEET

Leila series

last update 17/6/2013



GENERAL INFORMATION

- Product series especially designed & optimized for NF2x757A series of LEDs.
- Special care taken to make light distribution as uniform as possible.
- Lens material optical grade PMMA with high UV and temperature resistance. Allows use of high current and temperature conditions.

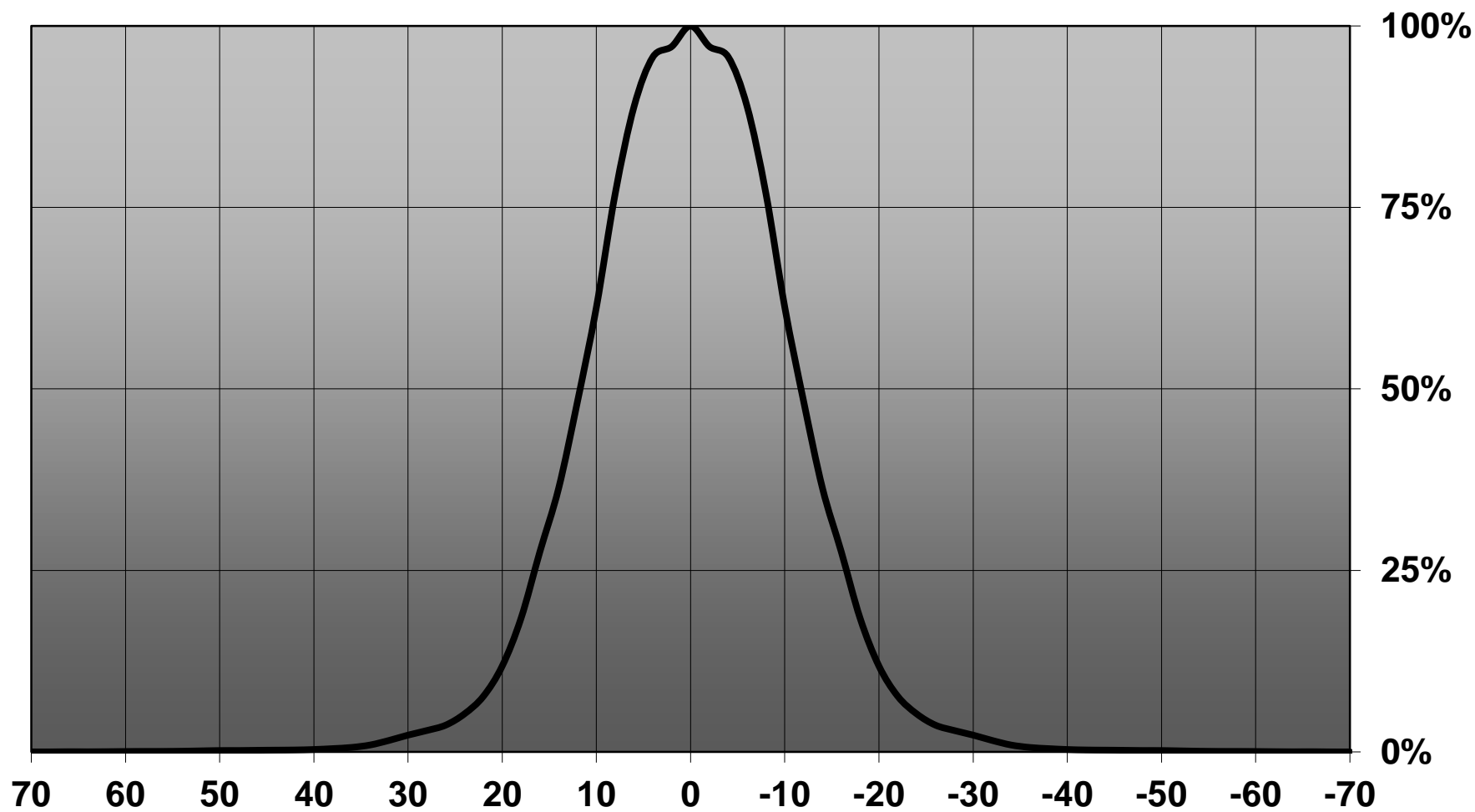
Please find more information about used material from below:

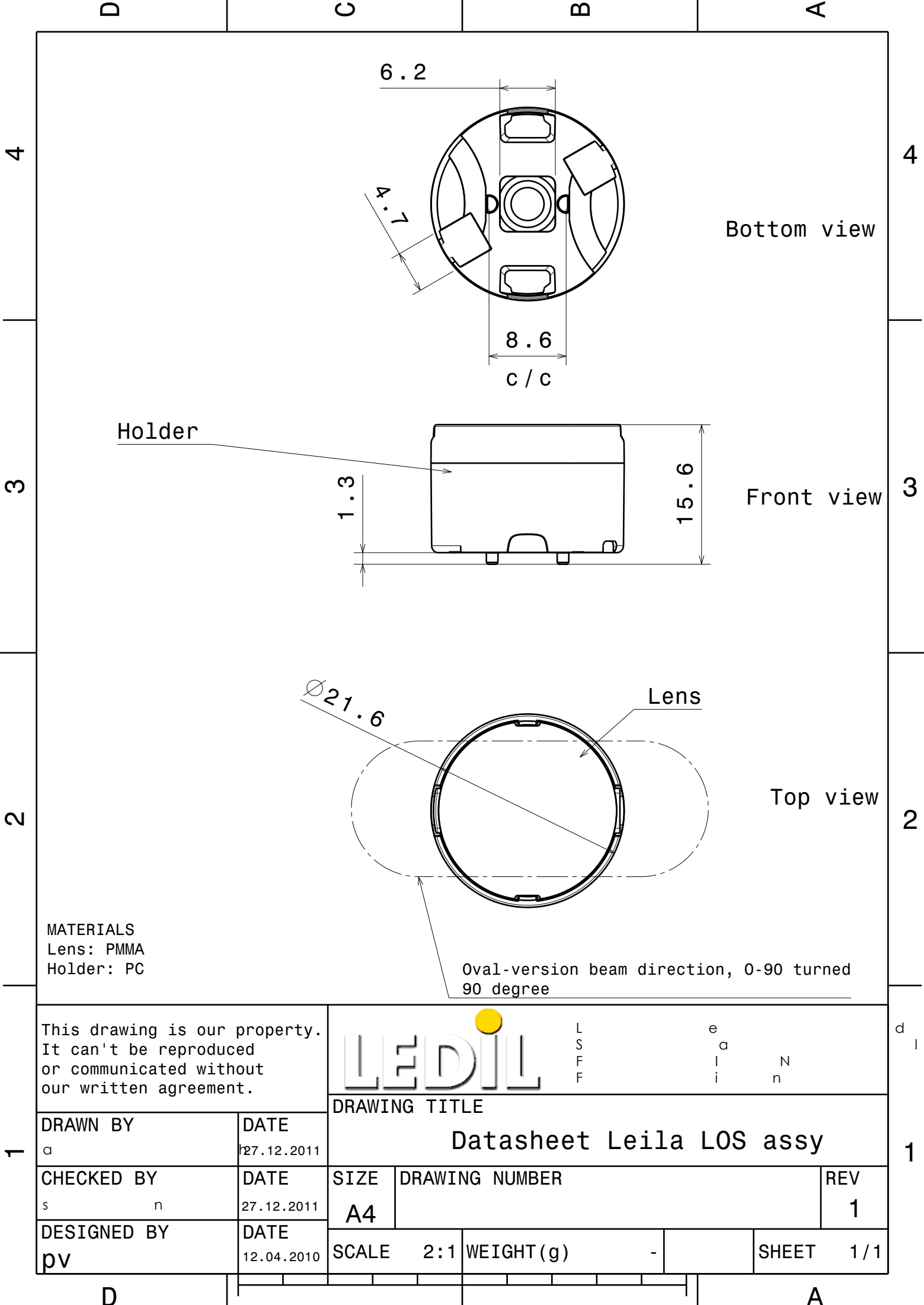
http://ledil.fi/sites/default/files/Documents/Technical/Material/PMMA%20N%20UL94_Yellow%20Card.pdf

<http://ledil.fi/sites/default/files/Documents/Technical/Material/PMMA%20N%20PLEXIGLAS-Datasheet.pdf>

- Optic holder molded by high quality PC material (120 degrees of Celcius / 248 degrees of Fahrenheit).

Relative intensity of CA12414-LOS-M_SQ





This drawing is our property.
It can't be reproduced
or communicated without
our written agreement.



L
S
F
F

e
a
i
n
N

d
l

DRAWING TITLE

Datasheet Leila LOS assy

DRAWN BY
a

DATE
27.12.2011

CHECKED BY
s n

DATE
27.12.2011

DESIGNED BY
pv

DATE
12.04.2010

SIZE
A4

DRAWING NUMBER

REV
1

SCALE 2:1

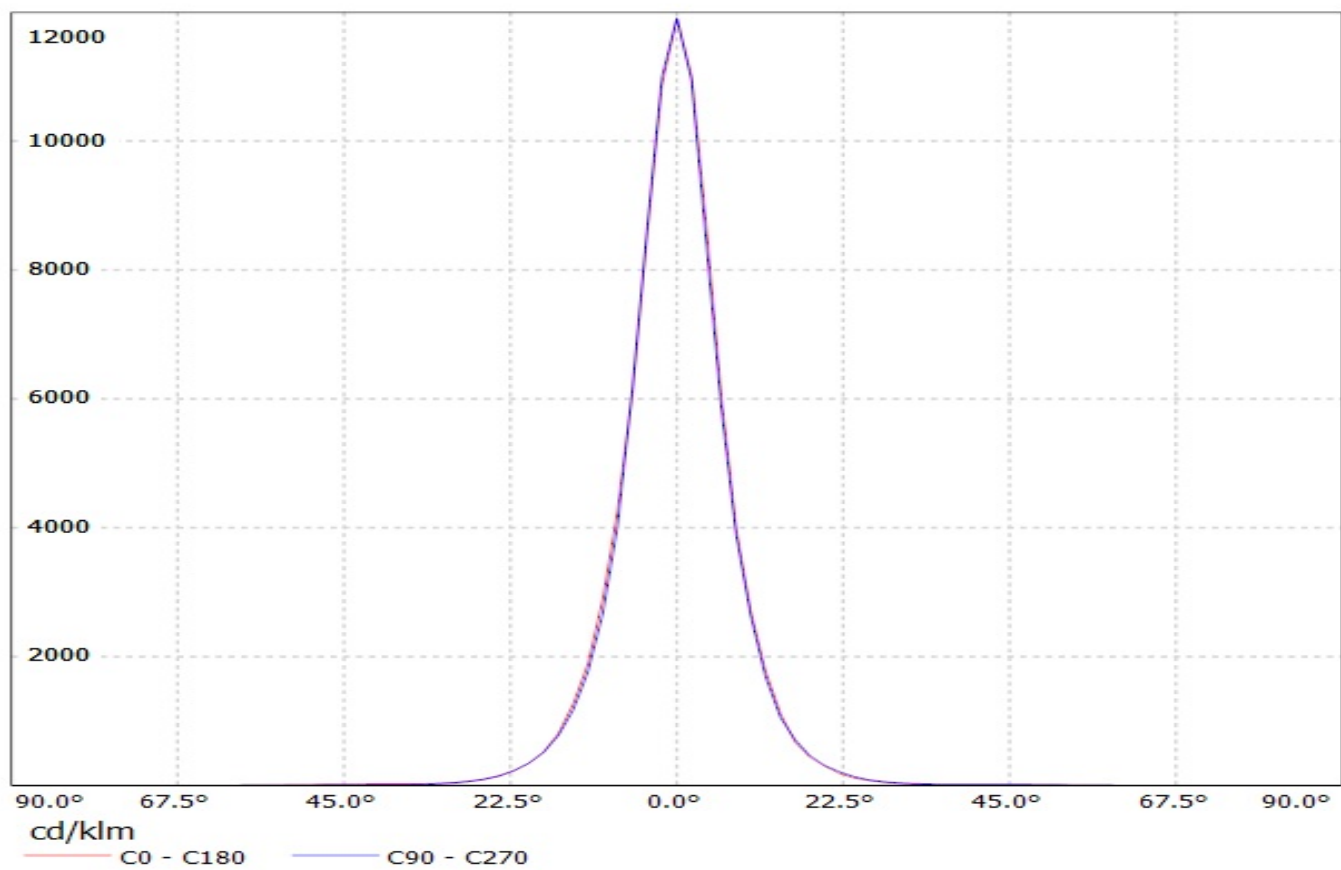
WEIGHT (g) -

SHEET 1 / 1

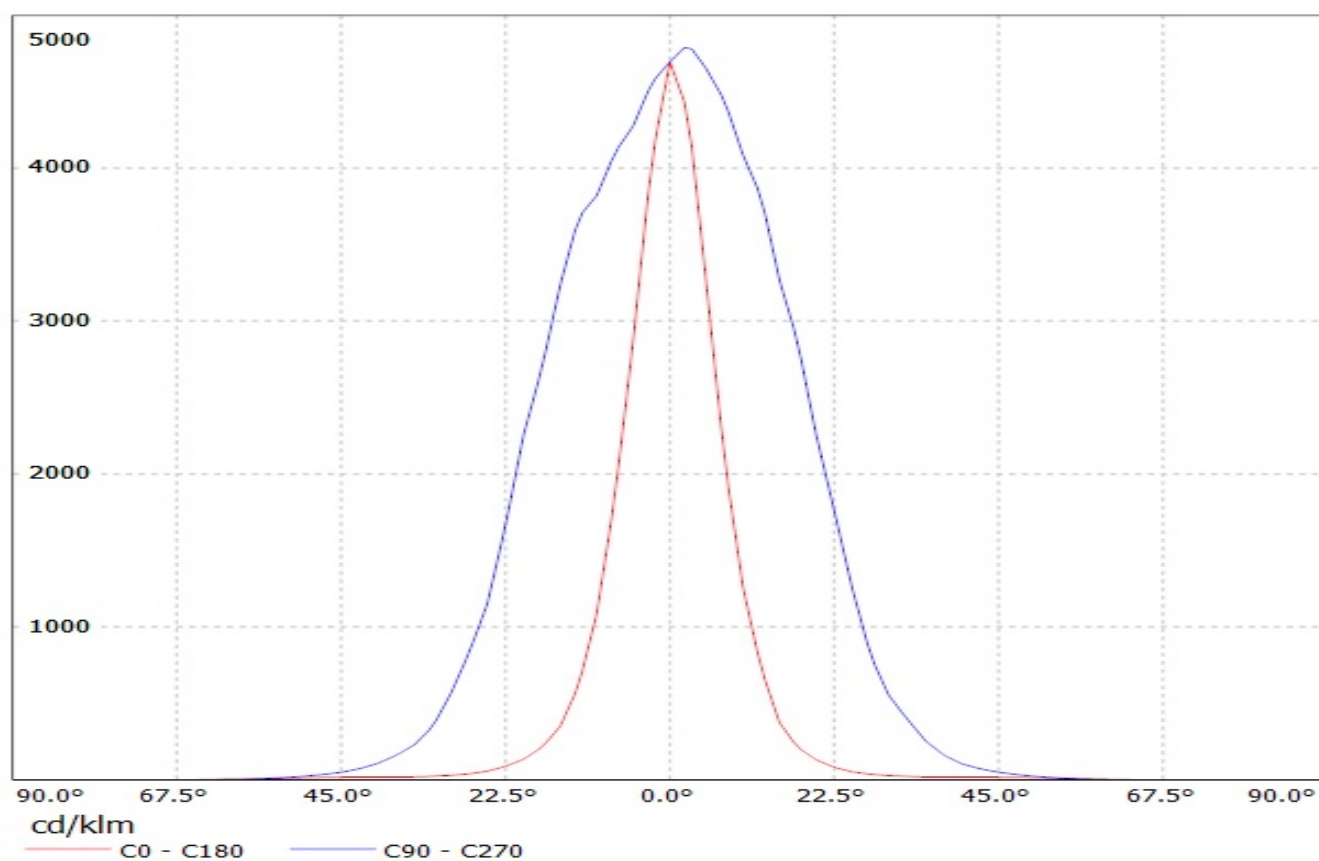
1

1

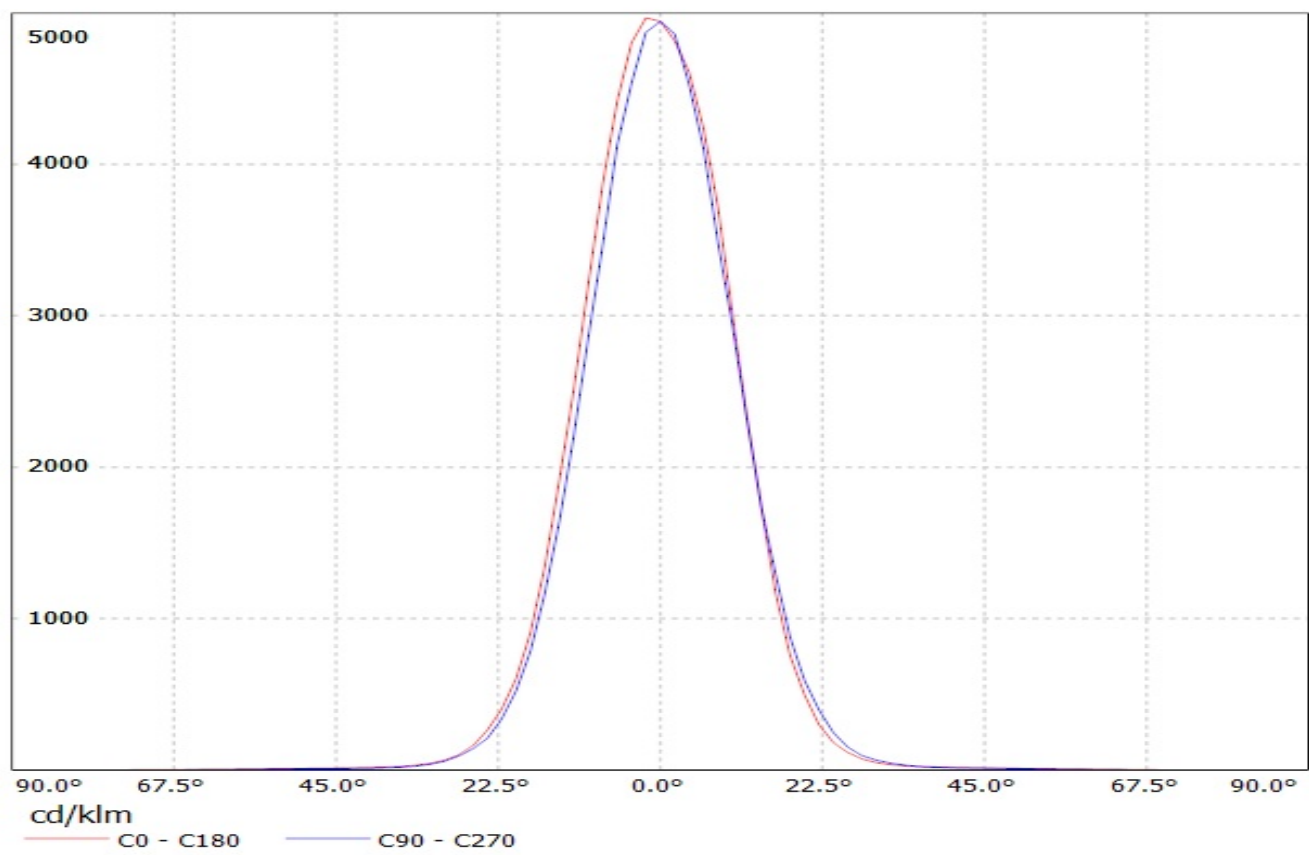
Luminaire: Ledil Oy CP12413_LOS-D_(NF2x757A) Efficiency=91%
Lamps: 1 x Nichia NF2x757A (NF2W757ART) 61,5lm @ 100mA CCT=4900K P=0.6W I=100mA



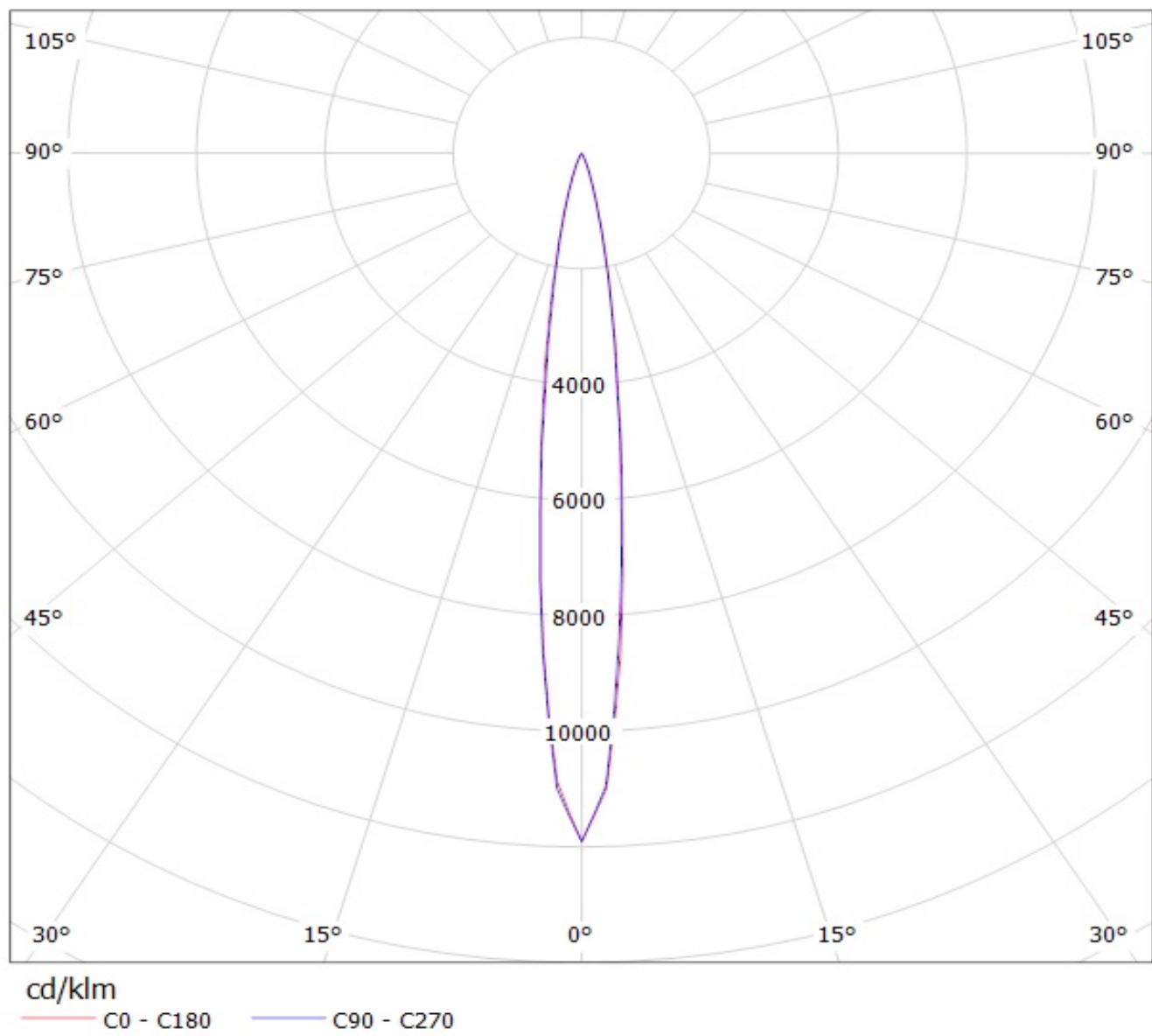
Luminaire: Ledil Oy CP12415_LOS-O-90_(NF2x757A) Efficiency=94%
Lamps: 1 x Nichia NF2x757A (VF2W757ART) 67lm @ 100mA CCT=4900K P=0.6W I=100mA



Luminaire: Ledil Oy CP12414_LOS-M_(NF2x757A) Efficiency=92%
Lamps: 1 x Nichia NF2x757A (NF2W757ART) 67 lm @ 100mA CCT=4900K P=0.6W I=100mA

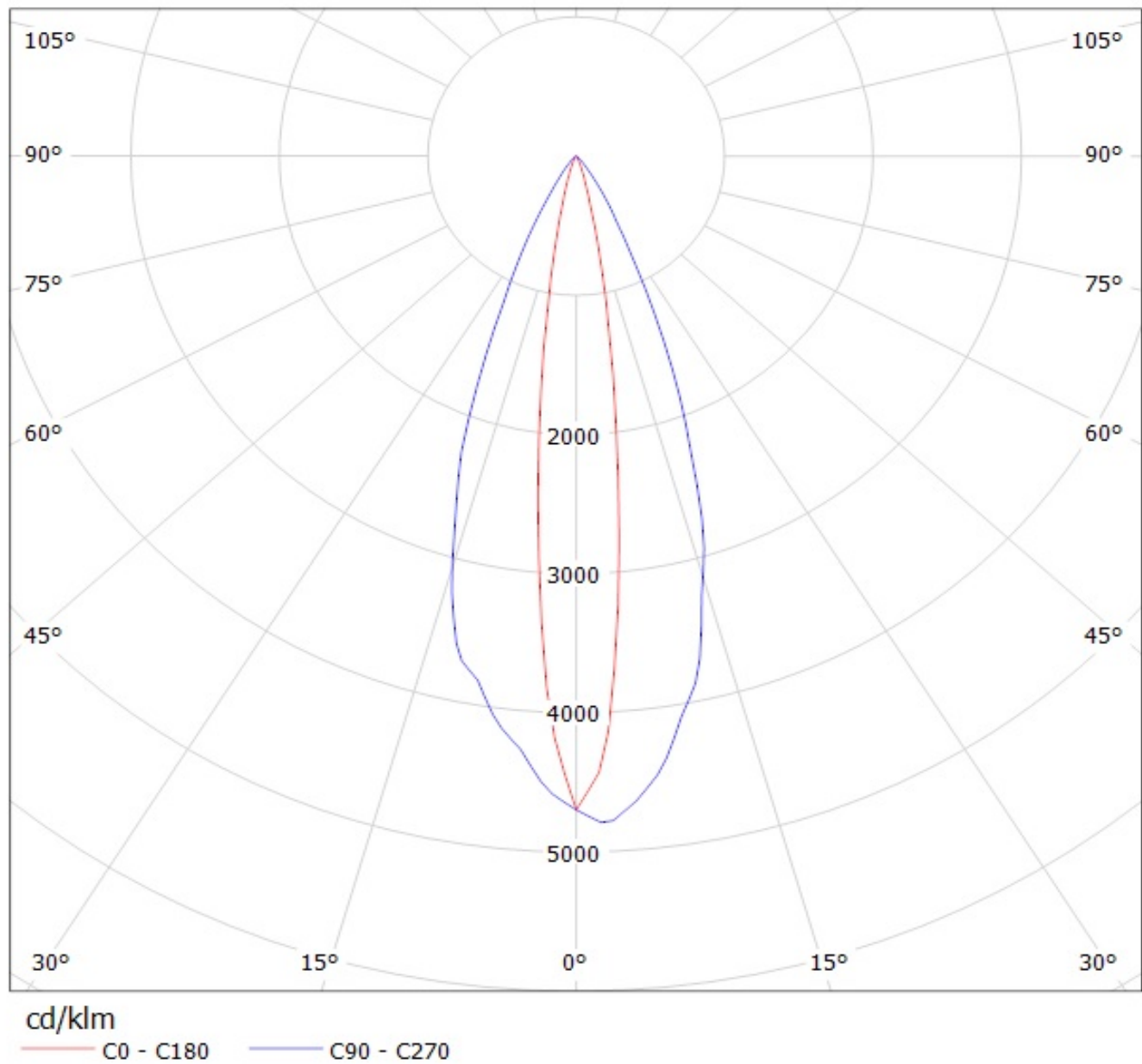


Luminaire: Ledil Oy CP12413_LOS-D_(NF2x757A) Efficiency=91%
Lamps: 1 x Nichia NF2x757A (NF2W757ART) 61,5lm @ 100mA CCT=4900K P=0.6W I=100mA

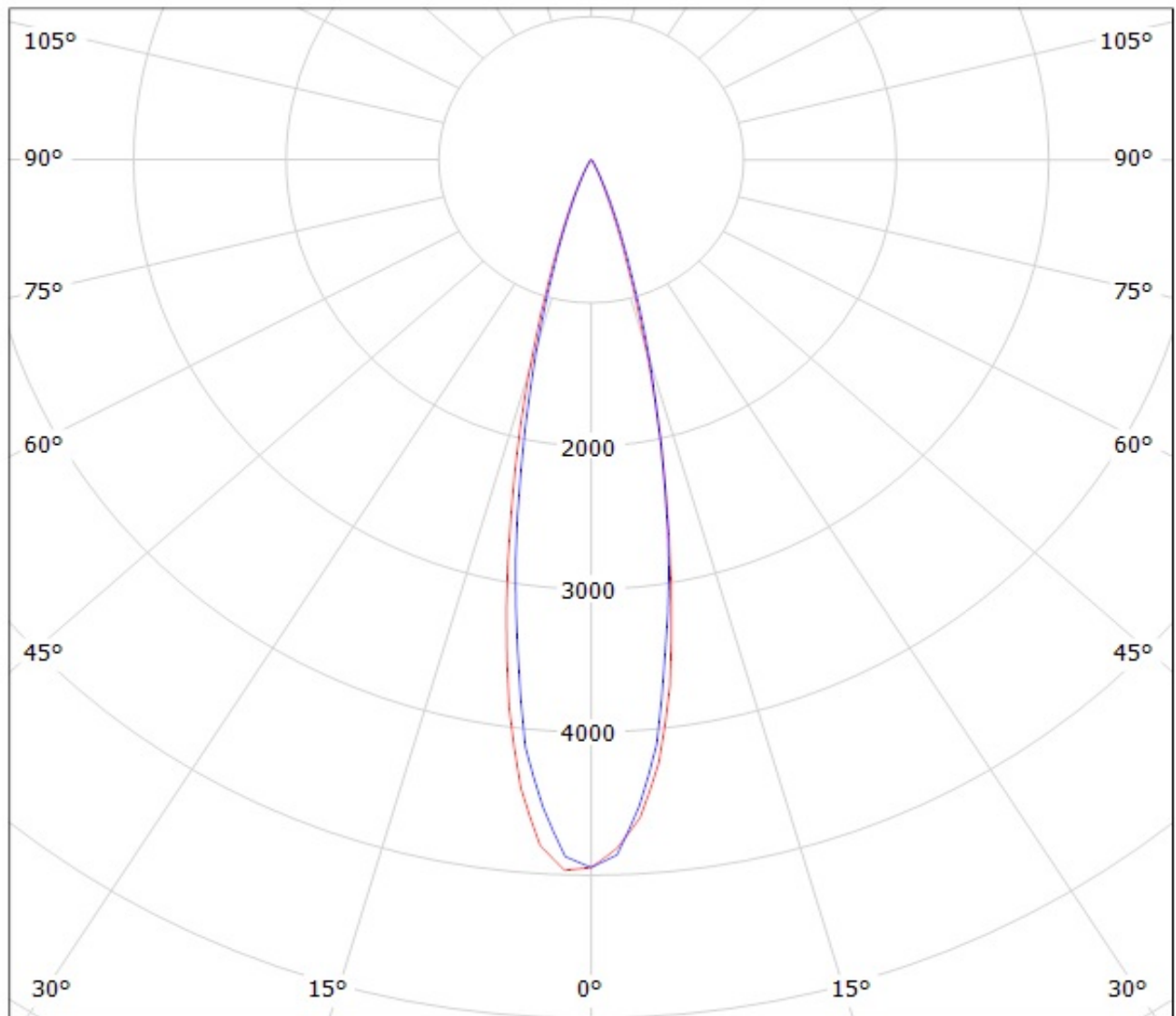


Luminaire: Ledil Oy CP12415_LOS-O-90_(NF2x757A) Efficiency=94%

Lamps: 1 x Nichia NF2x757A (VF2W757ART) 67lm @ 100mA CCT=4900K P=0.6W I=100mA



Luminaire: Ledil Oy CP12414_LOS-M_(NF2x757A) Efficiency=92%
Lamps: 1 x Nichia NF2x757A (NF2W757ART) 67 lm @ 100mA CCT=4900K P=0.6W I=100mA



cd/klm

— C0 - C180

— C90 - C270