

## DETAILS

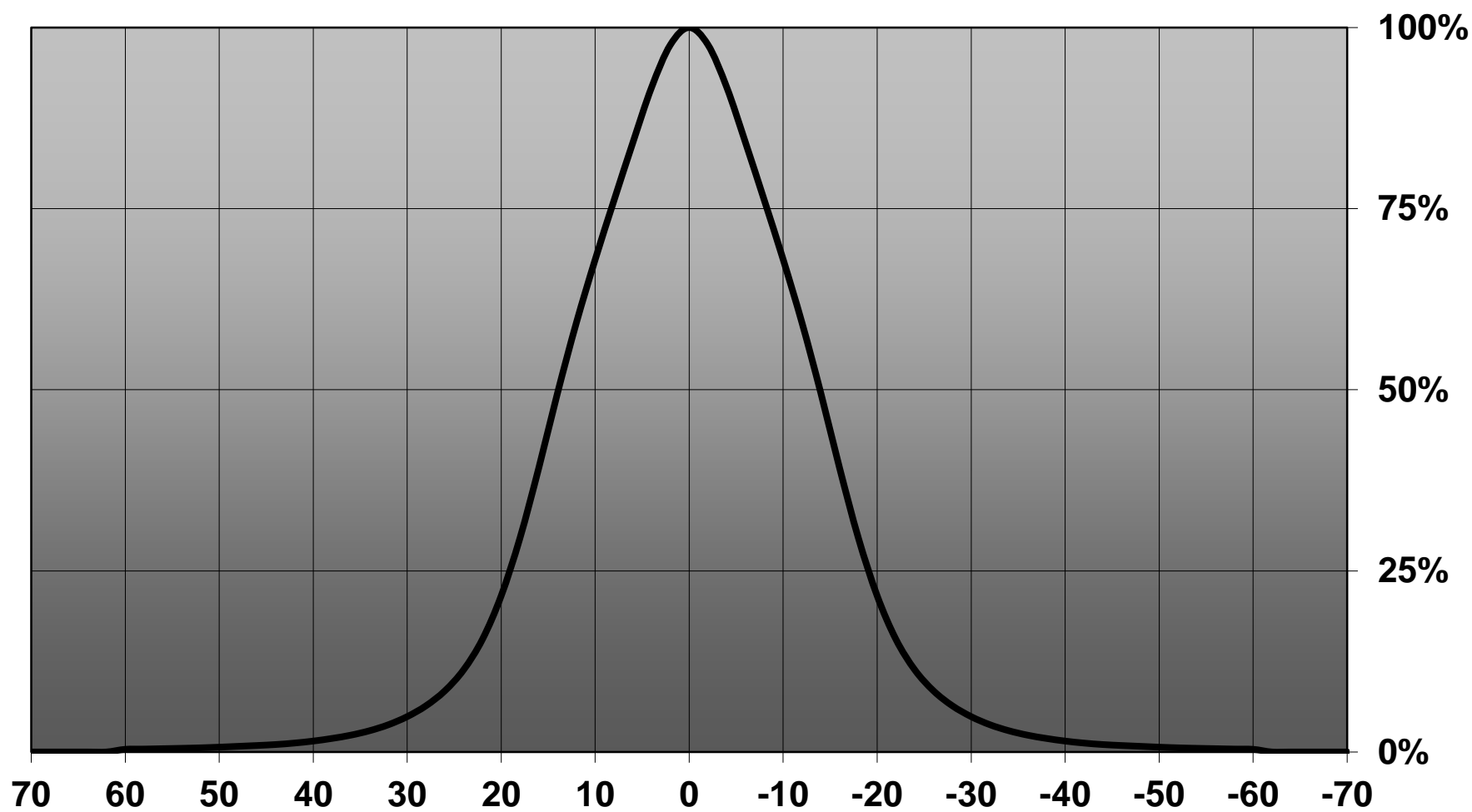
Product Number	FCN12774_IRIS-M
Family	Iris
Type	Pack
Color	black
Diameter	38 mm
Height	28.8 mm
Style	round
Optic Material	PMMA
Holder Material	PC
Fastening	screw, pin, glue
Status	ready
ROHS Compliant	Yes
Date Updated	8/10/2012

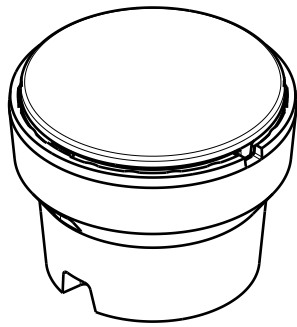


## OPTICAL PROPERTIES

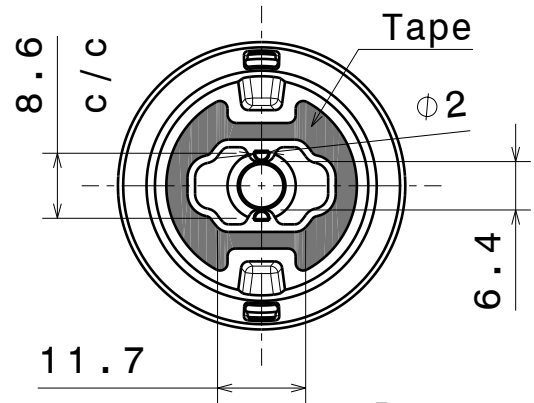
LED	Viewing Angle	Light Beam	Efficiency	cd/lm	connector
XM-L	28 degrees		84 %	1.400	-
XM-L2	29 degrees		80 %	2.900	-

**Relative intensity of FCA12777 & FCN12774\_IRIS-M-XML**

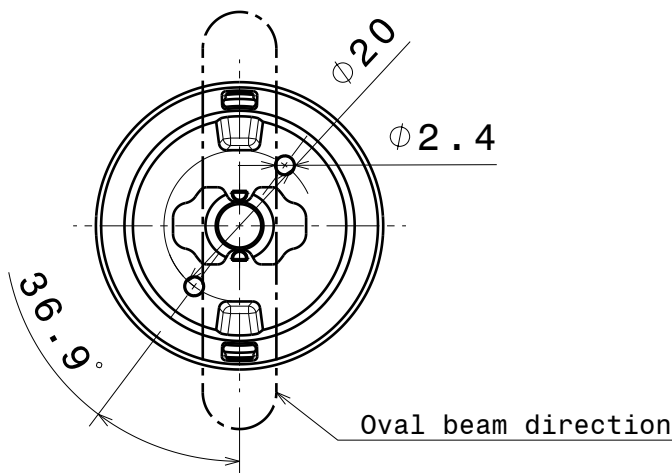




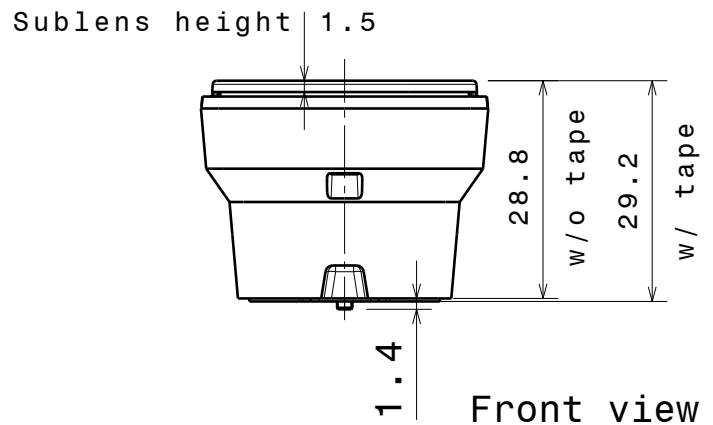
Isometric view



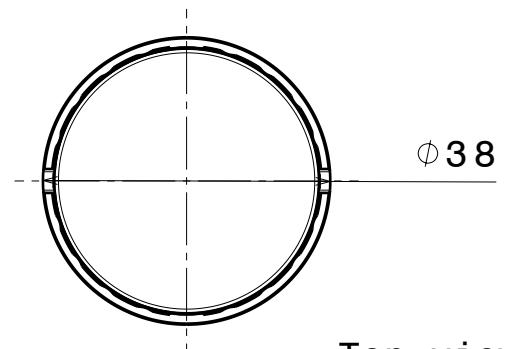
Bottom view



Bottom view  
without tape



Front view



Top view

#### Materials

Lens: PMMA  
Sublens: PC  
Holder: PC  
Tape: PU Foam

This drawing is our property.  
It can't be reproduced  
or communicated without  
our written agreement.

**LEDiL**

Ledil Oy  
Salorankatu 10  
FIN 24240 SALO  
Finland

#### DRAWING TITLE

Mechanical drawing

DRAWN BY

as

DATE

17.9.2012

IRIS-XM

CHECKED BY

sn

DATE

-

SIZE

A4

PART NUMBER

REV

001

DESIGNED BY

-

DATE

-

SCALE

1:1

WEIGHT

-

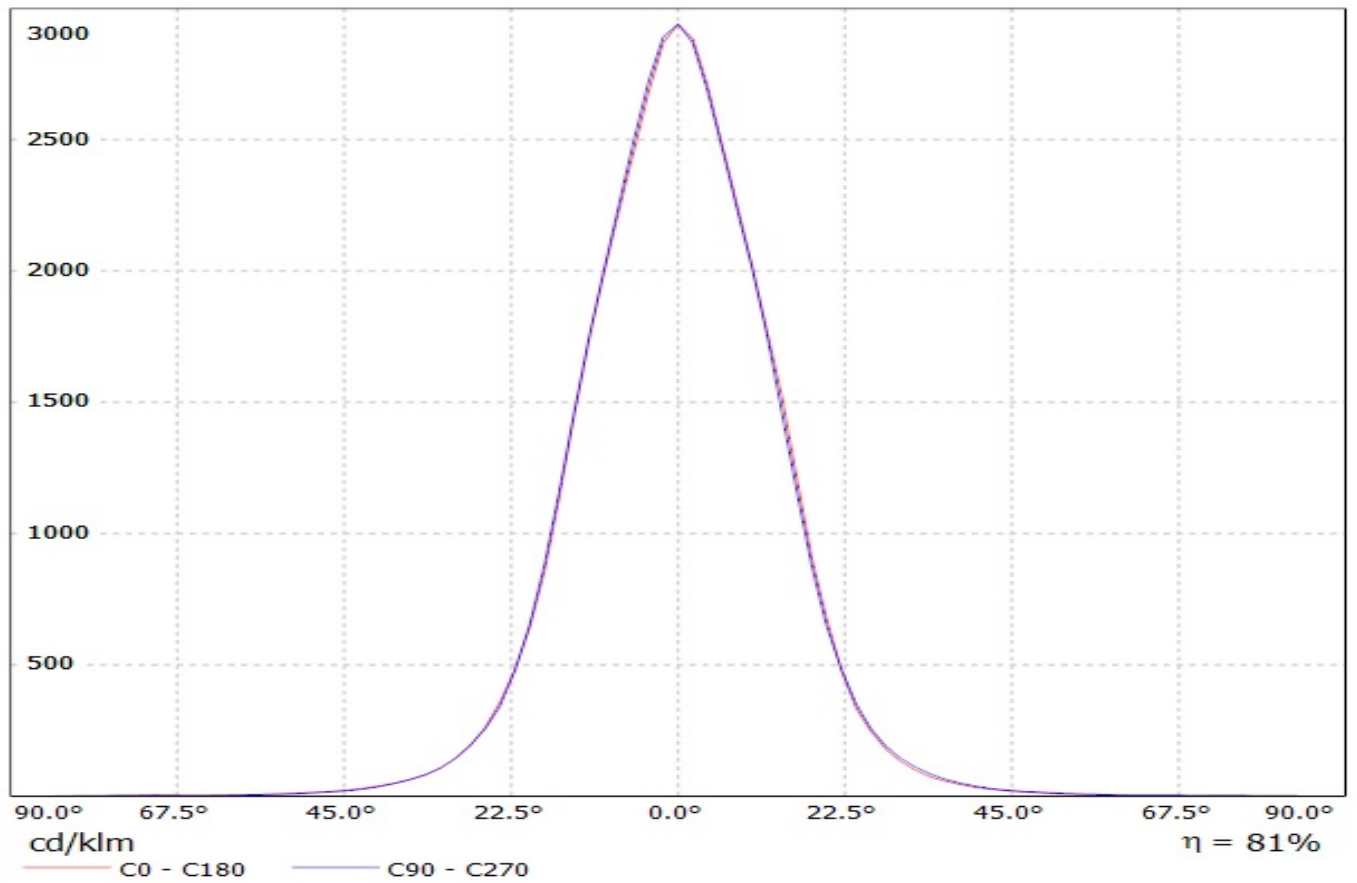
SHEET

1/1

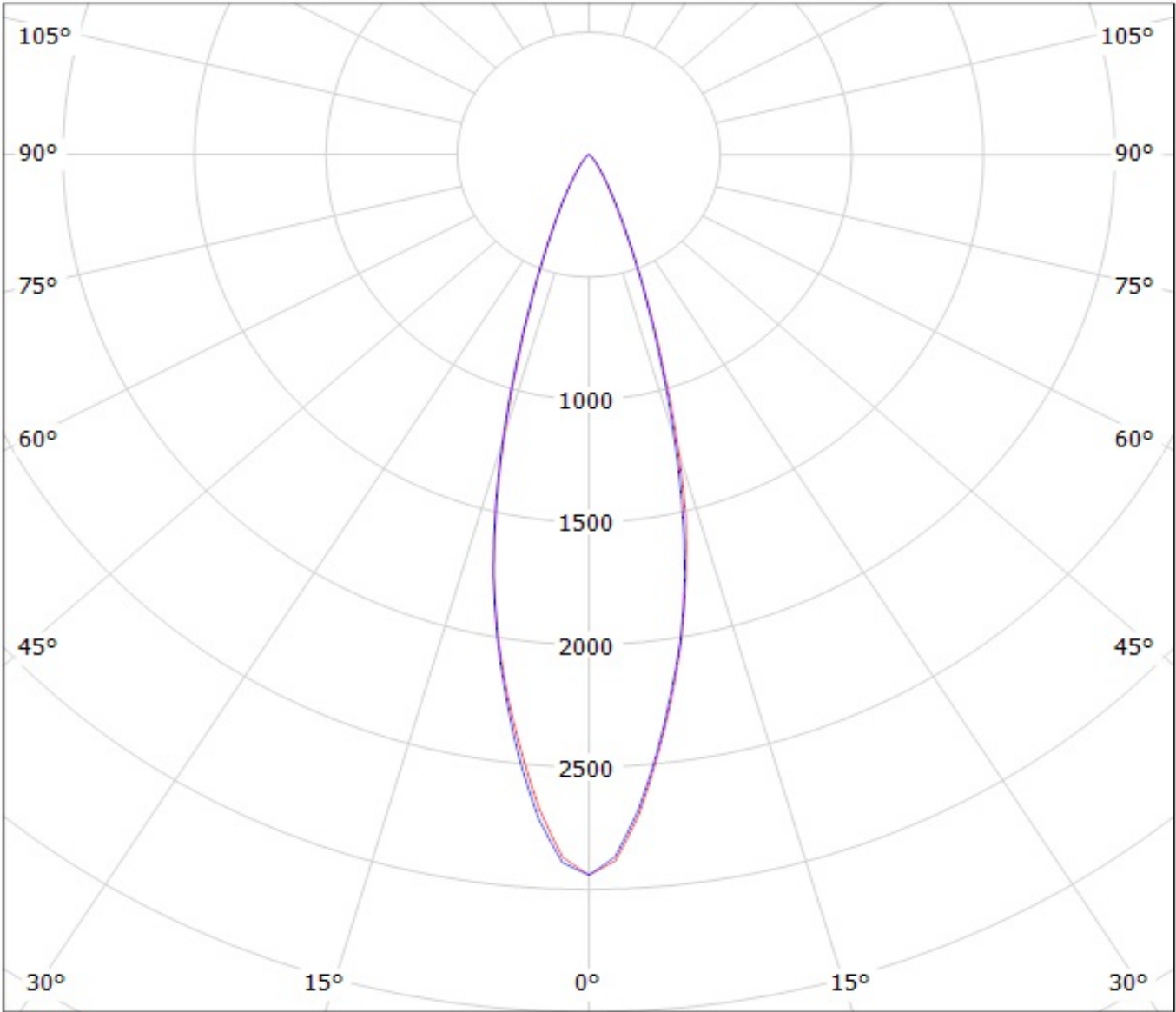
D

A

Luminaire: LEDil Oy FCN12774\_IRIS-M\_(XM-L2) Efficiency=80%  
Lamps: 1 x Cree XM-L2 (XMLBWT-0-7B4-T30-0L-0001) 91lm @ 250mA CCT=3200K P=0.7W I=250mA



Luminaire: LEDil Oy FCN12774\_IRIS-M\_(XM-L2) Efficiency=80%  
Lamps: 1 x Cree XM-L2 (XMLBWT-0-7B4-T30-0L-0001) 91lm @ 250mA CCT=3200K P=0.7W I=250mA



cd/klm  
C0 - C180 C90 - C270

$\eta = 81\%$

**NOTE: The typical divergence will be changed by different color, chip size and chip position tolerance. The typical total divergence is the full angle measured where the luminous intensity is half of the peak value.**