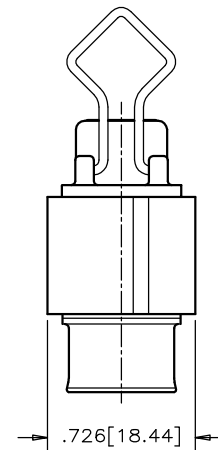
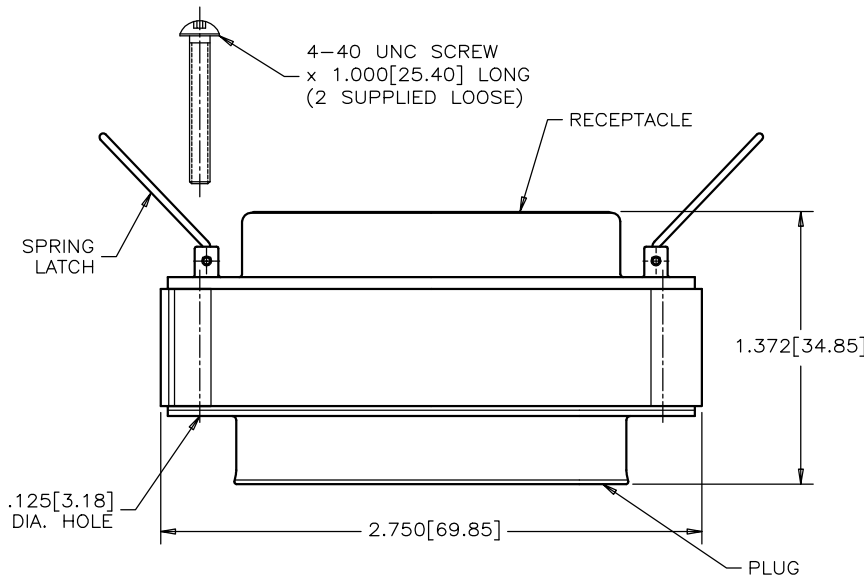
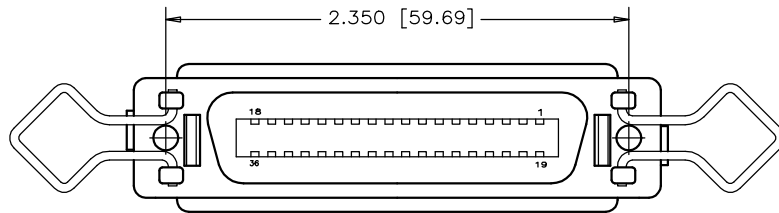


ORDERING CODE:

PART NUMBER F C C 5 7 - 0 9 3 6 0 - 1 1 0

SERIES _____
 STYLE _____
 09=ADAPTER
 NUMBER OF CONTACTS _____
 MODIFIER _____
 0=STANDARD
 MOUNTING CODE _____

MODIFIER (0=STANDARD)
 CAPACITANCE
 D=50 pF 7=1200 pF
 0=180 pF 9=5600 pF
 1=470 pF 8=47000 pF
 3=820 pF E=2200 pF
 5=1000 pF N=NON-FILTERED
 REFER TO AMPHENOL
 CATALOGUE FOR FILTER
 PERFORMANCE CHARACTERISTICS



| REVISIONS | | | | |
|-----------|------|-----------------|----------|--------|
| SYM | ZONE | ECN, ERN NO. | DATE | APPRD. |
| A | | PRODUCT DRAWING | 02/08/20 | C.B. |

THIS IS A CAD DRAWING. DO NOT MANUALLY REVISE.

MECHANICAL TECHNICAL DATA:

MATERIALS:

SHELL: ZINC DIECAST (RECEPTACLE), STEEL (PLUG), TIN PLATED.

CONTACTS: PHOSPHOR BRONZE, 30 MICROINCHES [0.76 MICRONS] OF GOLD PLATED ON CONTACT MATING AREA OVER NICKEL.

INSERT: HIGH STRENGTH THERMOPLASTIC POLYESTER FLAMMABILITY RATING UL 94V-0

GROUND SPRING: BERYLLIUM COPPER, TIN PLATED

SPRING LATCH: STAINLESS STEEL

SIDE SHELLS: ALUMINUM, TIN PLATED.

ELECTRICAL TECHNICAL DATA (FILTERED CONNECTORS):

WORKING VOLTAGE 200 VDC
 D.W.V. 600 VDC

THIS DOCUMENT CONTAINS PROPRIETARY INFORMATION AND SUCH INFORMATION MAY NOT BE DISCLOSED TO OTHERS FOR ANY PURPOSE OR USED FOR MANUFACTURING PURPOSES WITHOUT WRITTEN PERMISSION FROM AMPHENOL CANADA CORP.

| | | | | |
|-------------------|-------------------------------|--------------------|---|------------------------------------|
| MATERIAL ----- | DRAWN C.BOISVERT | DATE 02/08/20 | Amphenol Canada Corp. | |
| | DESIGNED | | | |
| | CHECKED | | | |
| | I. E. APPRD. | | | |
| FINISH ----- | Q. A. APPRD. | | TITLE FCC57, 36 SIZE FILTERED ADAPTER WITH SPRING LATCHES, 4-40 MTG SCREW | |
| | DWG. APPRD. | | | |
| | ENG. REL. NO. | | | |
| | REF. EAR 11920 | | | |
| | DIMENSIONS ARE IN INCHES [mm] | CODE ID. NO. 03554 | DWG C | DRAWING NO. P-FCC57-09360-1X0 |
| | | | SCALE 2/1 | WT. ----- SURF. ----- SHEET 1 OF 1 |