



**Build a top quality
maintenance toolkit without
paying top brand prices.**

Get professional products for better value,
with our branded range.



Professionally approved products.

www.rs-components.com

The new generation of RS Brand tools for Maintainers and Electricians

With RS branded products you get:

- Savings of up to 30% on leading manufacturer brands
- Competitive pricing with no compromise on quality
- Tried and tested products

3 **MULTI TOOLS**



6 **UTILITY KNIVES**



10 **HAMMERS**



13 **HACKSAWS**



17 **SCREWDRIVERS**



20 **LUBRICATION**



27 **TECH CASES**



30 **TOOL STORAGE**



34 **INSPECTION CAMERA**



MULTI TOOLS

11 IN 1 MULTI TOOL WITH LED FLASHLIGHT

- Stainless steel construction
- Includes canvas pouch



CODE NO	HxWxD / mm	kg
789-4625	130 x 65 x 30	0.29



MULTI TOOLS

15 IN 1 MULTI TOOL

- Aluminium construction
- Includes canvas pouch



CODE NO	HxWxD / mm	kg
789-4613	130 x 65 x 30	0.27

8 IN 1 MULTI FUNCTION TOOL

- Stainless steel construction
- Includes canvas pouch



CODE NO	HxWxD / mm	kg
789-4631	130 x 65 x 30	0.18



MULTI TOOLS

ELECTRICIANS MULTI TOOL

- Stainless steel construction, with rubber inlays for added grip
- Includes canvas pouch



CODE NO	HxWxD / mm	kg
789-4629	130 x 65 x 30	0.23

8 IN 1 MULTI FUNCTION SNIPS

- Stainless steel construction, with rubber inlays for added grip
- Includes canvas pouch



CODE NO	HxWxD / mm	kg
789-4638	130 x 65 x 30	0.23



UTILITY KNIVES

RETRACTABLE QUICK CHANGE KNIFE

- Heavy duty zinc alloy construction
- Auto loading function
- Easy access blade compartment
- Contoured non slip grip
- Accepts industry standard blades

- Auto loading function

- Easy access blade compartment

- Heavy duty zinc alloy construction

- Contoured non slip grip



CODE NO	HxWxD / mm	kg
789-4619	165 x 45 x 25	0.26



UTILITY KNIVES

FIXED UTILITY KNIFE

- Heavy duty zinc alloy construction
- Twist to open
- Contoured non slip grip
- Accepts industry standard blades

HeavyDuty



CODE NO	HxWxD / mm	kg
789-4603	155 x 35 x 25	0.19



RETRACTABLE UTILITY KNIFE

- Heavy duty zinc alloy construction
- Switch to open
- Contoured non slip grip
- Accepts industry standard blades

HeavyDuty



CODE NO	HxWxD / mm	kg
789-4616	165 x 40 x 25	0.22



UTILITY KNIVES

SAFETY KNIFE

- Heavy duty zinc alloy construction
- Automatic blade retraction
- Contoured non slip grip
- Ergonomic thumb control

HeavyDuty



CODE NO	HxWxD / mm	kg
789-4607	150 x 40 x 25	0.08

LOCK BACK KNIFE

- Lock-back blade
- Quick blade change mechanism
- Lock out blade function
- Aluminum body, with release switch
- Accepts industry standard blades



CODE NO	HxWxD / mm	kg
789-4596	80 x 30 x 18	0.08



UTILITY KNIVES

9MM SNAP OFF KNIFE

- Positive blade auto-lock
- Stores 2 blades
- ABS body with TPR soft grips



CODE NO	HxWxD / mm	kg
789-4590	140 x 30 x 25	0.04

18MM SNAP OFF KNIFE

- Positive blade auto-lock
- Stores 2 blades
- ABS body with TPR soft grips



CODE NO	HxWxD / mm	kg
789-4600	160 x 48 x 25	0.07



HAMMERS

- Steel locking plate - eliminates head getting loose or falling apart

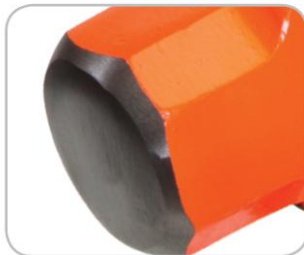
- Drop forge head - with striking ends induction hardened 52-56 hrc

- Spring steel bars - 9/32" (7.1 Mm) dia. Spring steel bars resist overstrike without breaking

- Steel reinforced lanyard hole

- Hi visibility head - adds instant identification on any job site

- Vulcanized rubber grip - absorbs impact & vibration reducing user fatigue. Protects user in the event of striking an electrical wire. Made from special grade of ozone resistant rubber for use in tough outside environments. Handles on most head sizes weigh more than the head, allowing user to apply double the torque



HAMMERS

12" INDESTRUCTIBLE CLUB HAMMER - 2.5LB & 4LB

- Revolutionary indestructible handles constructed from spring steel eliminates any overstrike breakage
- Steel locking plates ensures head will not detach from the handle
- Induction hardened striking faces (52-56 HRC)
- Fully coated rubberised handle absorbs impact & vibrations reducing user fatigue. Non perishing material extends life in any condition.



CODE NO	Handle / mm	Head Weight kg
790-4710	300	1.1
790-4729	300	1.8



16" INDESTRUCTIBLE CROSS PEIN HAMMER - 2LB & 3LB

- Revolutionary indestructible handles constructed from spring steel eliminates any overstrike breakage
- Steel locking plates ensures head will not detach from the handle
- Induction hardened striking faces (52-56 HRC)
- Fully coated rubberised handle absorbs impact & vibrations reducing user fatigue. Non perishing material extends life in any condition.



CODE NO	Handle / mm	Head Weight kg
790-4722	400	0.9
790-4726	400	1.4



HAMMERS

14" INDESTRUCTIBLE BALL PEIN HAMMER - 240Z & 320Z

- Revolutionary indestructible handles constructed from spring steel eliminates any overstrike breakage
- Steel locking plates ensures head will not detach from the handle
- Induction hardened striking faces (52-56 HRC)
- Fully coated rubberised handle absorbs impact & vibrations reducing user fatigue. Non perishing material extends life in any condition.



CODE NO	Handle / mm	Head Weight  Kg
790-4735	350	0.7
790-4738	350	0.9



HACKSAWS

12" HEAVY DUTY PRO HACKSAW

- Heavy duty tubular frame
- High tension blade
- Soft grip handles at front and butt
- 32tpi bi-metal blade

HeavyDuty

- Soft grip handle

- Heavy duty tubular frame

- 32tpi bi-metal blade

- High tension blade

- Soft grip handle



CODE NO	HxWxD / mm	kg
789-4584	410 x 135 x 28	0.64



HACKSAWS

12" & 6" HACKSAW TWINPACK

- 6" jr hacksaw with 24tpi carbon steel blade
- 12" Hacksaw with 32tpi bi-metal blade
- 12" Hacksaw features a reversible spine to converts to close quarters saw
- 12" Hacksaw features dual position blade mounts (0 & 45 deg)
- Ergonomic Designs with comfort grips



CODE NO	HxWxD / mm	kg	HxWxD / mm	kg
789-4593	405 x 140 x 30	0.48	255 x 95 x 25	0.19



HACKSAWS

ADJUSTABLE HACKSAW 300MM / 250MM

- Accepts 250 & 300mm blades
- Quick adjustable frame
- High tension blade
- 32tpi bi-metal blade



CODE NO	HxWxD / mm	kg
789-4580	450 x 120 x 18	0.29



CLOSE QUARTERS HACKSAW

- Aluminium alloy frame, with ergonomic rubber handles
- For use in hard to access areas
- Accepts 10" blades
- Quick release blade mechanism
- Supplied with 24tpi HSS blade



CODE NO	HxWxD / mm	kg
789-4587	280 x 70 x 25	0.16



HACKSAWS

6" JR HACKSAW

- Balanced frame
- Ergonomic handle
- High tension blade
- 24tpi carbon steel blade

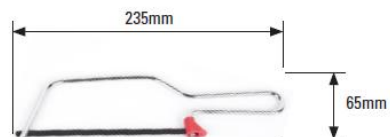


CODE NO	HxWxD / mm	kg
789-4578	255 x 95 x 20	0.11



6" WIRE FRAME JR HACKSAW

- Polished nickel frame
- 24tpi carbon steel blade



CODE NO	HxWxD / mm	kg
789-4574	235 x 65 x 5	0.07



SCREWDRIVERS

- Palm saver cap

- Patented pull out retracting cartridge design

- Handle is made from ABS resin

- Easy guide collar

- Alloy steel shaft

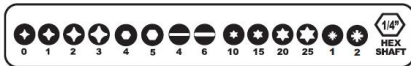
- Diameter 1-3/8" (35mm)



SCREWDRIVERS

15 IN 1 INTERCHANGEABLE SCREWDRIVER

- All purpose bit load driver loaded with 7 double end professional quality bits
- Magnetic bit holder. End of Shaft is a 1/4" hex nut driver
- Retractable Bit Cartridge - Makes it easy to find, store and change bits
- Specially designed Palm Saver Cap prevents blisters in the palm of your hand. Cap does not turn as you push on the cap and turn the handle
- Easy Guide Collar provides greater control by maintaining full contact between the bit and the screw
- Specially Engineered ABS resin handle
- Industrial grade S2 modified Steel bits with Rockwell hardness 58 - 62
- Phillips 0-3, Pozzi 1-2, Slotted 4-6, Hex 1/8" - 5/32", Torx 10-30

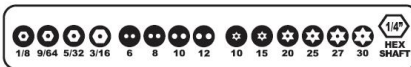


CODE NO	HxW / mm	kg
790-4700	225 x 40	0.23



INTERCHANGEABLE TAMPER PROOF SCREWDRIVER

- Must for all commercial/industrial tradesmen i.e. electricians, locksmiths, telephone technicians, maintenance personnel, etc
- Magnetic bit holder. End of Shaft is a 1/4" hex nut driver
- Retractable Bit Cartridge - Makes it easy to find, store and change bits
- Specially designed Palm Saver Cap prevents blisters in the palm of your hand. Cap does not turn as you push on the cap and turn the handle
- Easy Guide Collar provides greater control by maintaining full contact between the bit and the screw
- Specially Engineered ABS resin handle
- Industrial grade S2 modified Steel bits with Rockwell hardness 58 - 62
- Hex pin 1/8", 9/64", 5/32", 3/16", Spanner 6-12, Torq pin 10-30



CODE NO	HxW / mm	kg
790-4713	225 x 40	0.23



SCREWDRIVERS

RATCHETING INTERCHANGEABLE SCREWDRIVER

- Features ZAD 8 Zinc Alloy SOLID-CORE ratchet that delivers over 25 Nm of torque strength. Precision 28 Tooth ratchet design makes driving fasteners faster and easier
- Magnetic bit holder. End of Shaft is a 1/4" hex nut driver
- Retractable Bit Cartridge - Makes it easy to find, store and change bits
- Specially designed Palm Saver Cap prevents blisters in the palm of your hand. Cap does not turn as you push on the cap and turn the handle
- Easy Guide Collar provides greater control by maintaining full contact between the bit and the screw
- Specially Engineered ABS resin handle
- Industrial grade S2 modified Steel bits with Rockwell hardness 58 - 62
- Phillips 0-3, Pozi 1-2, Slotted 4-6, Torx 10-25



CODE NO	HxW / mm	kg
790-4716	225 x 40	0.23



- Heavy Duty aluminum die cast head with precision honed bore for rapid action

- Head casting fitting with bulk loader valve

- Ergonomic pistol grip and acute angle design - for ease of operation in narrow spaces

- Cartridge, Suction or filler pump loading



AIR OPERATED GREASE GUN

- All metal construction, fully CNC machined with hardened wear resistant moving parts
- Strainer at the suction tube inlet prevents contaminants from entering the system
- Virtually soundless pump. Noise level of 81 db only
- Air Inlet connection: 1/4" BSP (F), Pump Outlet: 1/4" BSP (F), Grease Output: 1.10 kg / minute
- Air hose length: 2160 mm
- Complete with adjustable drum trolley. Suitable for drum up to 60L capacity, Steel construction with HD Wheels

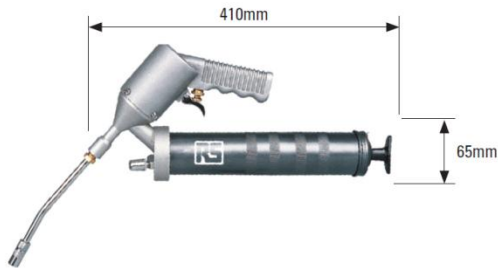


CODE NO	HxW / mm	Barrel	kg
786-5261	1000 x 445	12.5 Kg	14
786-5270	1000 x 445	50 Kg	14



AIR OPERATED GREASE GUN 4,800 PSI

- Heavy Duty aluminum die cast head with precision honed bore for rapid action
- Ergonomic pistol grip and acute angle design - for ease of operation in narrow spaces
- Head casting fitting with bulk loader valve
- Cartridge, Suction or filler pump loading
- Intermittent Action with grease discharge per shot, Air Operating Range: - 40-120 PSI, Pressure Ratio - 40:1"



CODE NO	HxWxD / mm	kg
786-5309	410 x 180 x 65	1.8



HEAVY DUTY GREASE GUN 10,000 PSI

- Heavy Duty Aluminum die cast head with bulk loader & air release valve, Rugged and robust Zinc plated handle
- Delivers 1gm/stroke
- Variable stroke feature allows convenient usage even in confined areas
- Cartridge, Suction or filler pump loading
- Complete with 150 mm bent steel extension & 4 jaw coupler



CODE NO	HxWxD / mm	kg
786-5283	380 x 127 x 60	1.5



STANDARD DUTY GREASE GUN 6,000 PSI

- Steel Head
- Soft rubber grip for ease of use
- Most Popular gun for general purpose lubrication, Delivers 1gm/stroke
- Complete with 150 mm bent steel extension & 4 jaw coupler
- Cartridge, Suction or filler pump loading



CODE NO	HxWxD / mm	kg
786-5277	380 x 127 x 60	1.38



PISTOL HANDLE GREASE GUN 5,000 PSI

- Pistol handle designed to prevent fingers from "Pinching"
- Delivers 0.5gm/stroke
- Complete with 100 mm straight steel extension & 4 jaw coupler
- Cartridge & Suction Fill

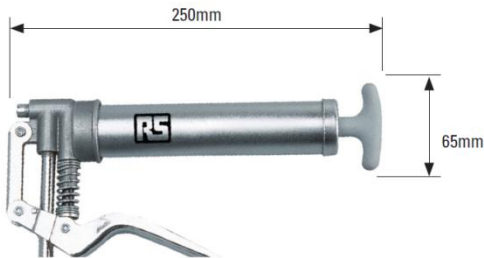


CODE NO	HxWxD / mm	kg
786-5289	366 x 131 x 35	1.3



MINI PISTOL GREASE GUN 3,500 PSI

- One Hand Pistol type tool box size Gun, in a textured zinc plated finish
- Convenient pull type operating mechanism
- Delivers 0.40gm/stroke
- Complete with 100 mm straight steel extension & 4 jaw coupler
- Cartridge & Suction Fill



CODE NO	HxWxD / mm	kg
786-5273	250 x 65 x 65	0.55

500ML SUCTION GUN FLEXSPOUT

- Rugged construction, steel plated head and deluxe lip seal for maximum suction
- Needs no priming
- Suitable for use with non corrosive liquids
- Complete with 300 mm flexible vinyl hose
- Spout length: 310 mm



CODE NO	HxWxD / mm	kg
786-5299	335 x 65 x 65	0.9



PUSH GREASE GUN 30CC

- Push type grease gun for use with bulk grease only
- Compact toolbox size, ideal for greasing impact wrenches, lawn mowers, chain saws, trailers, ATV's, autos & trucks etc
- 1000psi
- Comes complete with universal connector
- Can be custom built with pointed nozzle for special applications



CODE NO	HxWxD / mm	kg
786-5292	165 x 43 x 43	0.26



PUSH GREASE GUN 125CC

- Push type grease gun for use with bulk grease only
- Compact toolbox size, ideal for greasing impact wrenches, lawn mowers, chain saws, trailers, ATV's, autos & trucks etc
- 1000psi
- Comes complete with universal connector
- Can be custom built with pointed nozzle for special applications



CODE NO	HxWxD / mm	kg
786-5295	210 x 48 x 48	0.4



786-5286

GREASE GUN ACCESSORY KIT

- Kit comprising of most popularly used greasing couplers
- Standard 4 jaw coupler (3500psi)
- Professional 3 jaw coupler (6000psi)
- Professional 4 jaw coupler (6000psi)
- Hook on coupler (3000psi)
- Push on coupler (3000psi)



786-5302

GREASE GUN COUPLER & NOZZLE KIT

- Kit comprising of most popularly used greasing nozzles
- 6" rigid angled
- 12" Flexi
- 18" Flexi
- 3,500psi working pressure, 11,600psi bursting pressure
- Thermoplastic hose with outer diameter of 8.5mm
- Highly flexible with a minimum bending radius of 40mm



- IP67 Rated

- Completely dust tight

- Water tight to 1m Submersion



BLACK IP67 CASE WITH FOAM 240X195X112MM

- 9" IP Rated Technicians case with foam insert
- 240 x 195 x 112mm
- IP67 Rated
- Completely dust tight
- Water tight to 1m Submersion

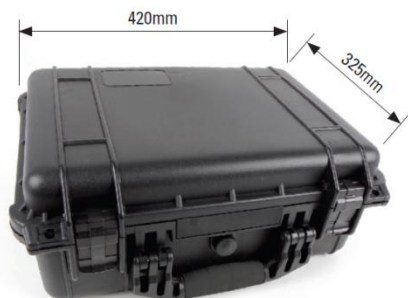


CODE NO	HxWxD / mm	kg
788-7236	240 x 195 x 112	0.765



BLACK IP67 CASE WITH FOAM 420X325X175MM

- 16.5" IP Rated Technicians case with foam insert
- 420 x 325 x 175mm
- IP67 Rated
- Completely dust tight
- Water tight to 1m Submersion



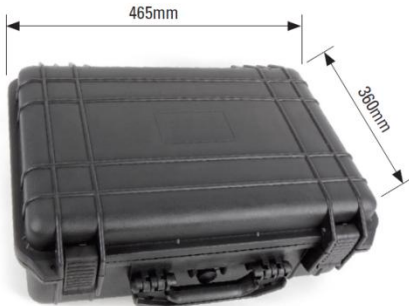
CODE NO	HxWxD / mm	kg
788-7239	420 x 325 x 175	2.69



TECH CASES

BLACK IP67 CASE WITH FOAM 465X360X175MM

- 18" IP Rated Technicians case with foam insert
- 465 x 360 x 175mm
- IP67 Rated
- Completely dust tight
- Water tight to 1m Submersion



CODE NO	HxWxD / mm	kg
788-7233	465 x 360 x 175	2.90

BLACK IP67 CASE WITH FOAM 515X435X225MM

- 20.5" IP Rated Technicians case with foam insert
- 515 x 435 x 225mm
- IP67 Rated
- Completely dust tight
- Water tight to 1m Submersion



CODE NO	HxWxD / mm	kg
788-7242	515 x 435 x 225	5.11



TOOL STORAGE

ELECTRICIANS TOOL BAG WORKSTATION

- Constructed from tough padded tear resistant polyester
- Tri sector workstation with multiple storage options for electricians/engineers/ technicians tools
- Comfortable strap

- Tough, padded, tear resistant polyester

- Multiple storage options

- Comfortable strap



CODE NO	HxWxD / mm	kg
788-7223	400 x 300 x 170	2.35



TOOL STORAGE

12" HARD BOTTOM TOOL BAG

- Constructed from tough padded tear resistant polyester
- Durable welded plastic waterproof base
- Multiple pockets
- Padded shoulder strap

Heavy Duty



CODE NO	HxWxD / mm	kg
788-7205	310 x 200 x 210	0.99



16" HARD BOTTOM TOOL BAG

- Constructed from tough padded tear resistant polyester
- Durable welded plastic waterproof base
- Multiple pockets
- Padded shoulder strap

Heavy Duty



CODE NO	HxWxD / mm	kg
788-7214	430 x 240 x 250	1.32



TOOL STORAGE

16" RUCKSACK

- 16" (406mm) Rucksack with reflective piping
- Double zipped bottom section for laptop or similar
- Multiple pockets
- Drinks holder
- Mobile phone/mp3 player holder on strap



CODE NO	HxWxD / mm	kg
788-7211	340 x 240 x 410	1.88

TOOL BELT WITH HOLSTER & POUCH

- Modular toolbelt comprising of 3 sectors
- Constructed from tough padded tear resistant polyester
- Breathable padded, adjustable belt (90-120cm) with double fastenings for extra comfort and safety
- Drill holster, with secure strap
- Hammer loop & tape measure fixing point
- Multiple compartments for tools/fixings etc



CODE NO	HxWxD / mm	kg
788-7217	560 x 265 x 100	0.40



TOOL STORAGE

ELECTRICIANS TOOL POUCH

- Tool pouch constructed from tough padded tear resistant polyester
- Tape measure fixing point & Tape holder chain
- Large compartments for easy access
- Breathable padded, adjustable belt (90-120cm) with double fastenings for extra comfort and safety.



CODE NO	HxWxD / mm	kg
788-7220	270 x 310 x 40	0.30



GENERAL TOOLBELT

- Tool pouch constructed from tough padded tear resistant polyester
- Hammer loop & tape measure fixing point
- "2 Large compartments and 4 pen/screwdriver slots"
- Breathable padded, adjustable belt (90-120cm) with double fastenings for extra comfort and safety.



CODE NO	HxWxD / mm	kg
788-7227	270 x 290 x 100	0.65



INSPECTION CAMERA

DIGITAL INSPECTION CAMERA

- 5.5mm camera and flexi hose
- Takes stills and videos
- 4 x Zoom
- Internal memory and SD card compatible
- A/V output

- Takes stills and videos

- Internal memory and SD card compatible

- A/V output

- 5.5mm camera

- Flexi hose



CODE NO	HxWxD / mm	kg
790-3381	330 x 220 x 80	?

