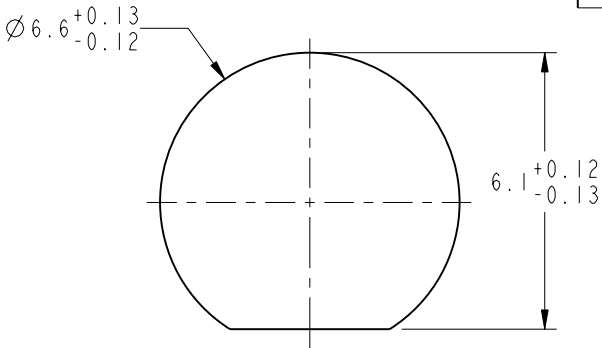
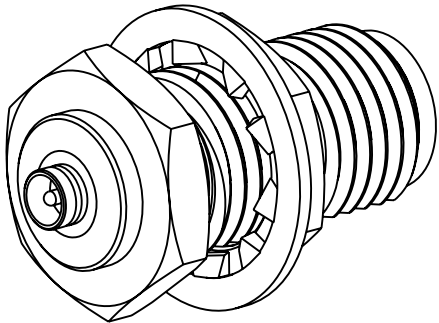


- NOTES:
- MATERIALS AND FINISHES:
BODY - BRASS, GOLD PLATING
CONTACT - BRASS, GOLD PLATING
INSULATOR - PTFE
 - ELECTRICAL:
A. IMPEDANCE: 50 OHM
B. FREQUENCY RANGE: DC - 6 GHz
C. VSWR(RETURN LOSS): 1.4 (15.56 dB), MAX.
 - MECHANICAL:
A. DURABILITY: 100 CYCLES MIN.
B. TEMPERATURE RANGE: -65° C TO +165° C
 - PACKAGING:
A. QUANTITY: SINGLE PACK
B. MARKING: BAG TO BE MARKED
"AMPHENOL, 901-10097, AND DATE CODE"
 - MAX. PANEL THICKNESS=3.18mm

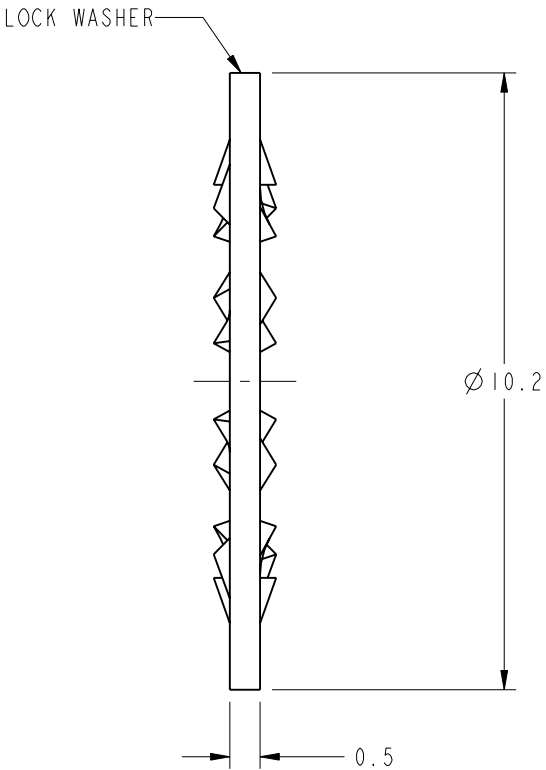
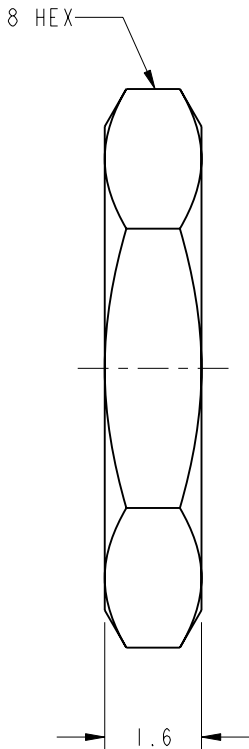


RECOMMENDED MOUNTING
HOLE DIMENSIONS
SCALE 6.000

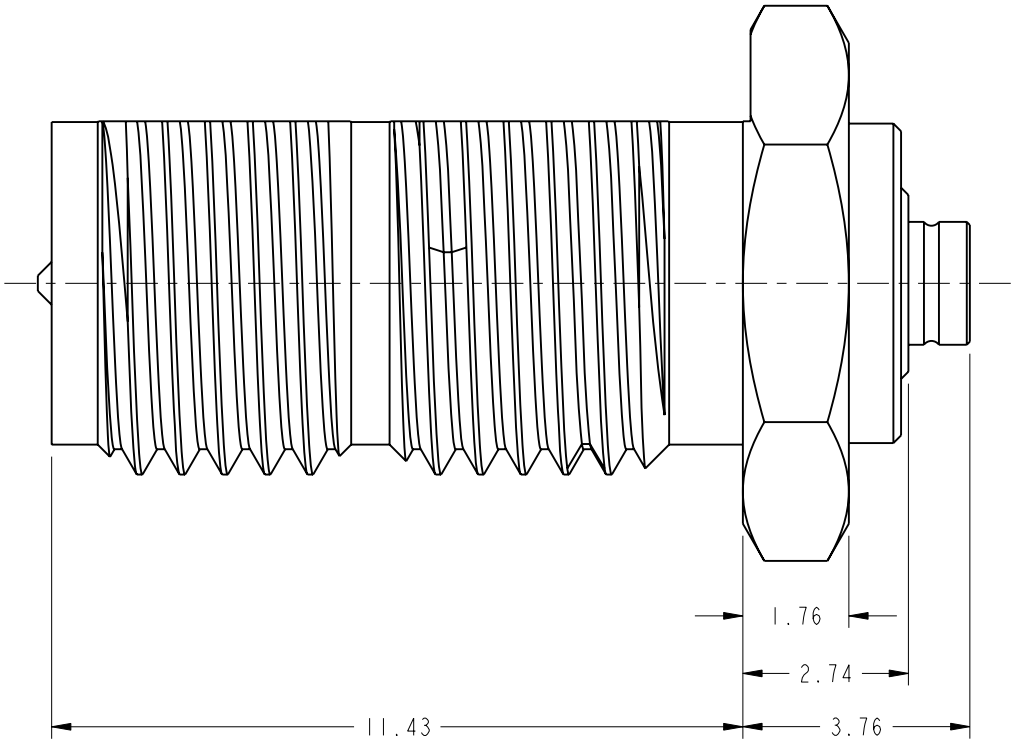
THIRD ANGLE PROJ.		REVISIONS			
REV	DESCRIPTION	DATE	ECO	APPR	
A	RELEASE TO MFG.	10/2/03	44653	MAH	
C	CHANGE THE DIM OF PARTS	17-Mar-11	48508	ROSE	



SCALE 4.000



Ø10.2



CUSTOMER OUTLINE DRAWING

ALL OTHER SHEETS ARE FOR INTERNAL USE ONLY

UNLESS OTHERWISE SPECIFIED, DIMENSIONS ARE IN METRIC AND TOLERANCES ARE: <0.5mm ± 0.05mm 0.5 - 6mm ±0.1mm 6 - 30mm ±0.2mm 30 - 120mm ± 0.3mm ANGLES ±1°	MATERIAL	DRAWN R.MAO	DATE 17-Mar-11	TITLE SMA REVERSE POLARITY BULKHEAD TO AMC PLUG ADAPTER		Amphenol RF Danbury CT USA, Tainan, Taiwan, Shenzhen, China www.amphenolrf.com	
	REFERENCE	ENGINEER H.PARIKH	DATE 07-Jan-03				
	FINISH	APPROVED S. HSIEH	DATE 23-Mar-11	SCALE: 8.0:1.0 SHEET 2 OF 2		DRAWING NO.	901-10097
				DWG SIZE B	REV C	ITEM NO.	901-10097
						PART NO.	901-10097

NOTICE - These drawings, specifications, or other data (1) are, and remain the property of Amphenol corp. (2) must be returned upon request; and (3) are confidential and not to be disclosed to any person other than those to whom they are given by Amphenol Corp. the furnishing of these drawings, specifications, or other data by Amphenol Corp., or to any other person to anyone for any purpose is not to be regarded by implication or otherwise in any manner licensing, granting rights to permitting such holder or any other person to manufacture, use or sell any product, process or design, patented or otherwise, that may in any way be related to or disclosed by said drawings, specifications, or other data.