
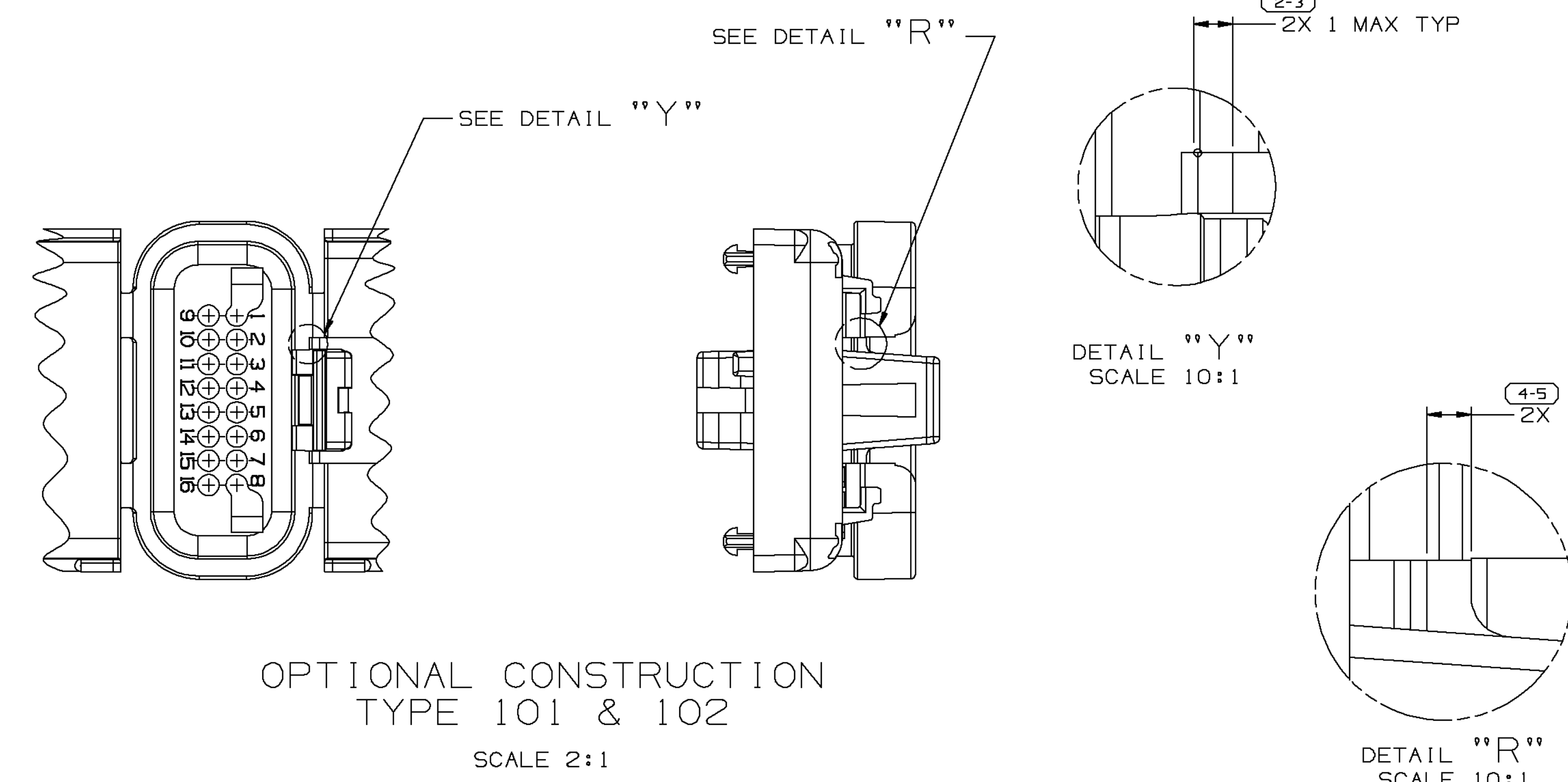
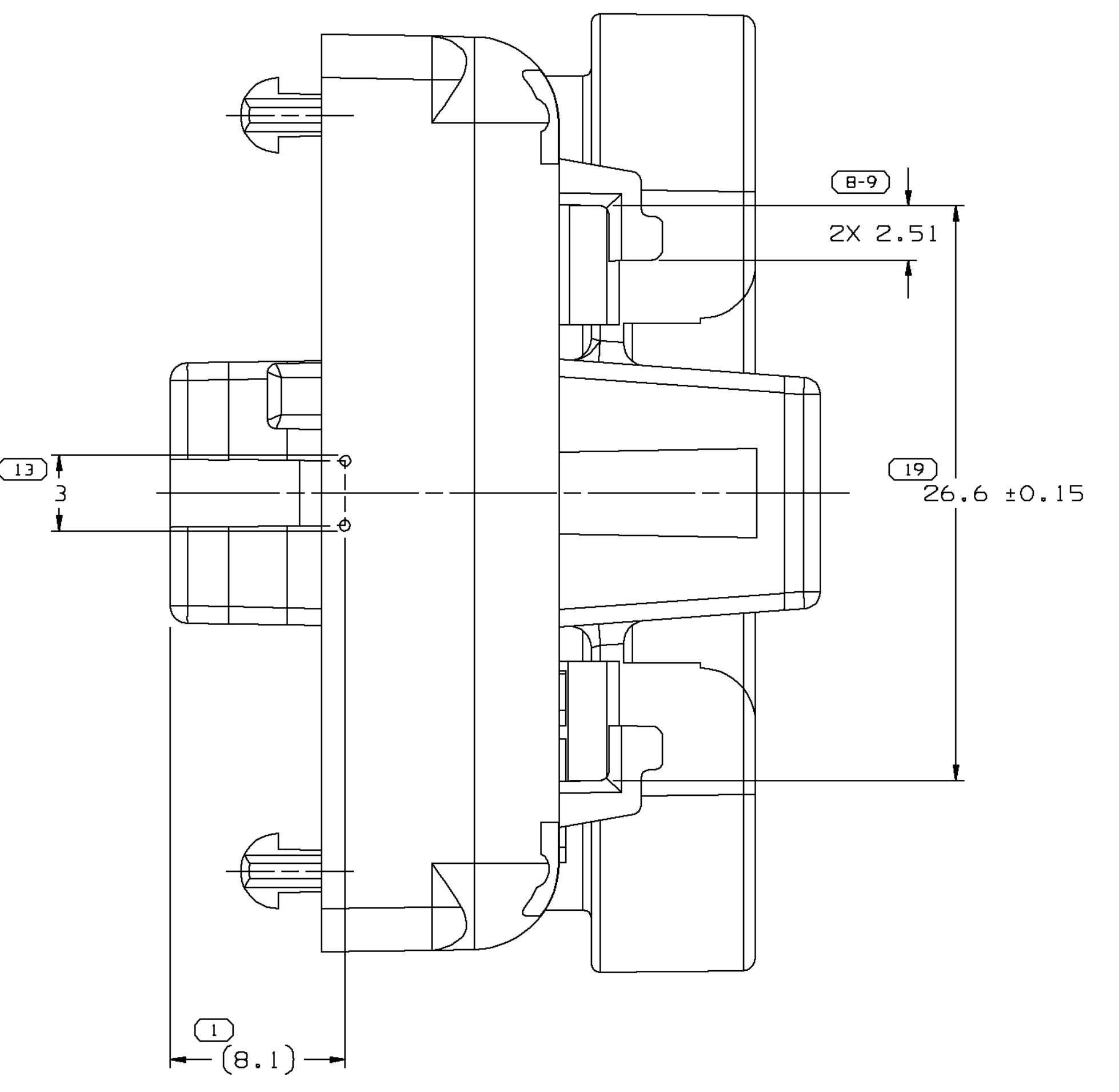
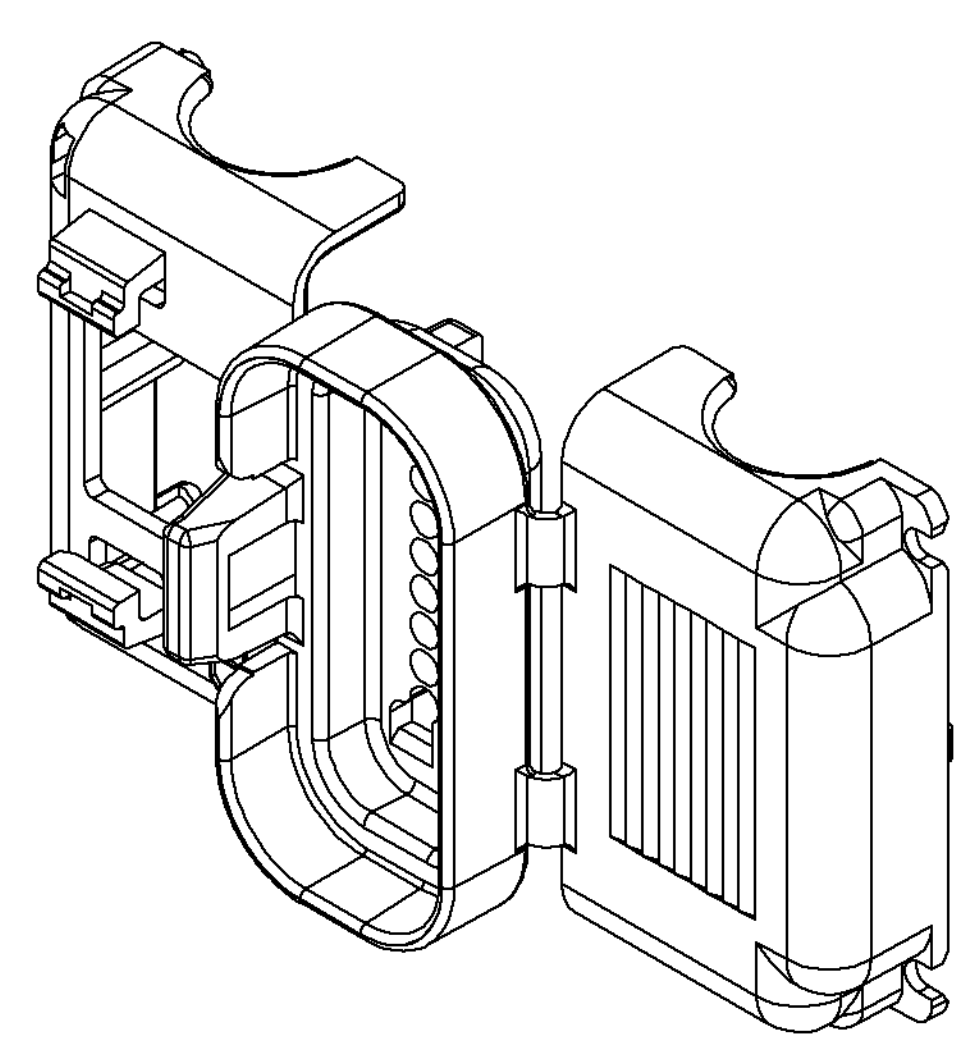
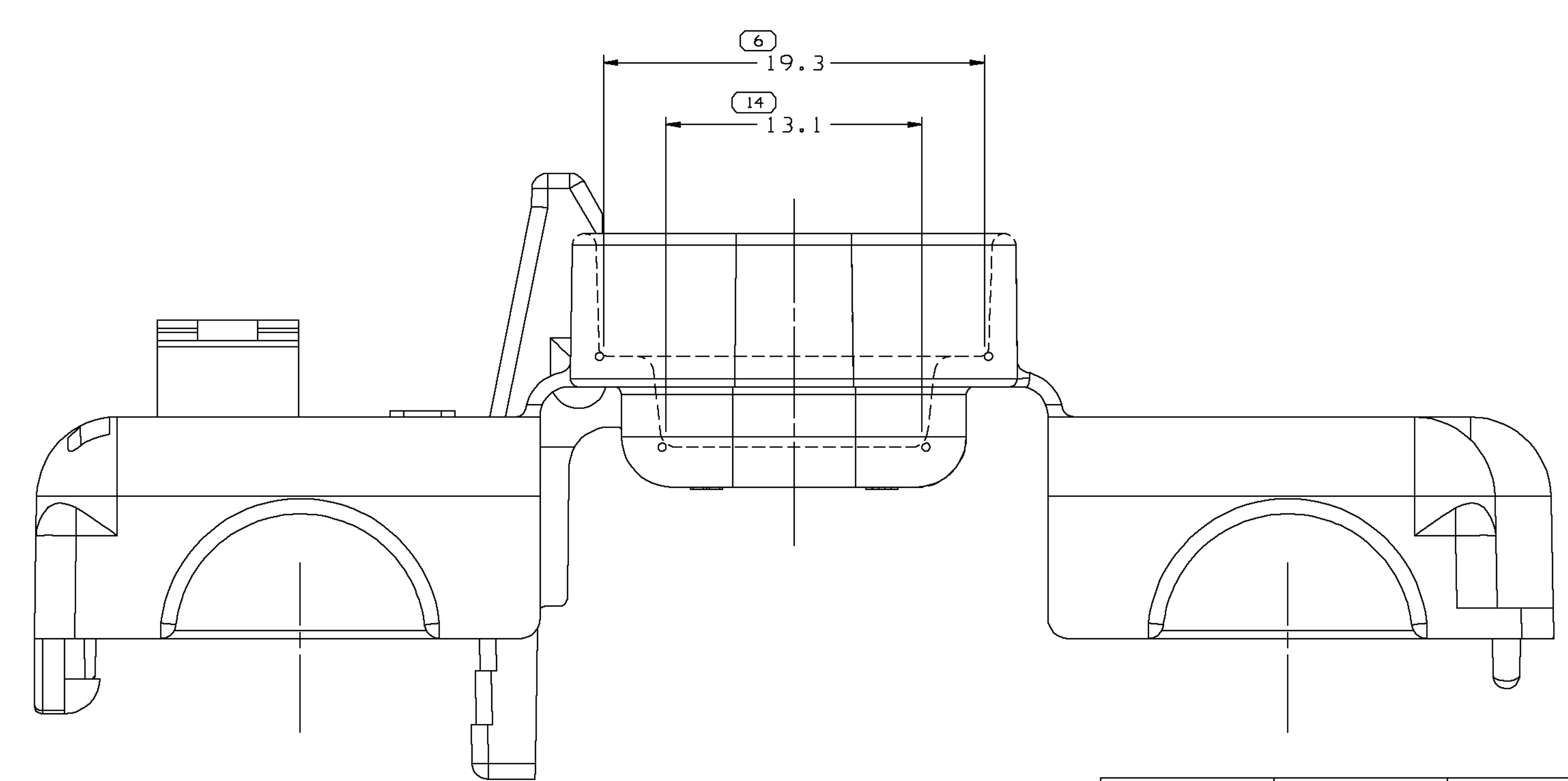
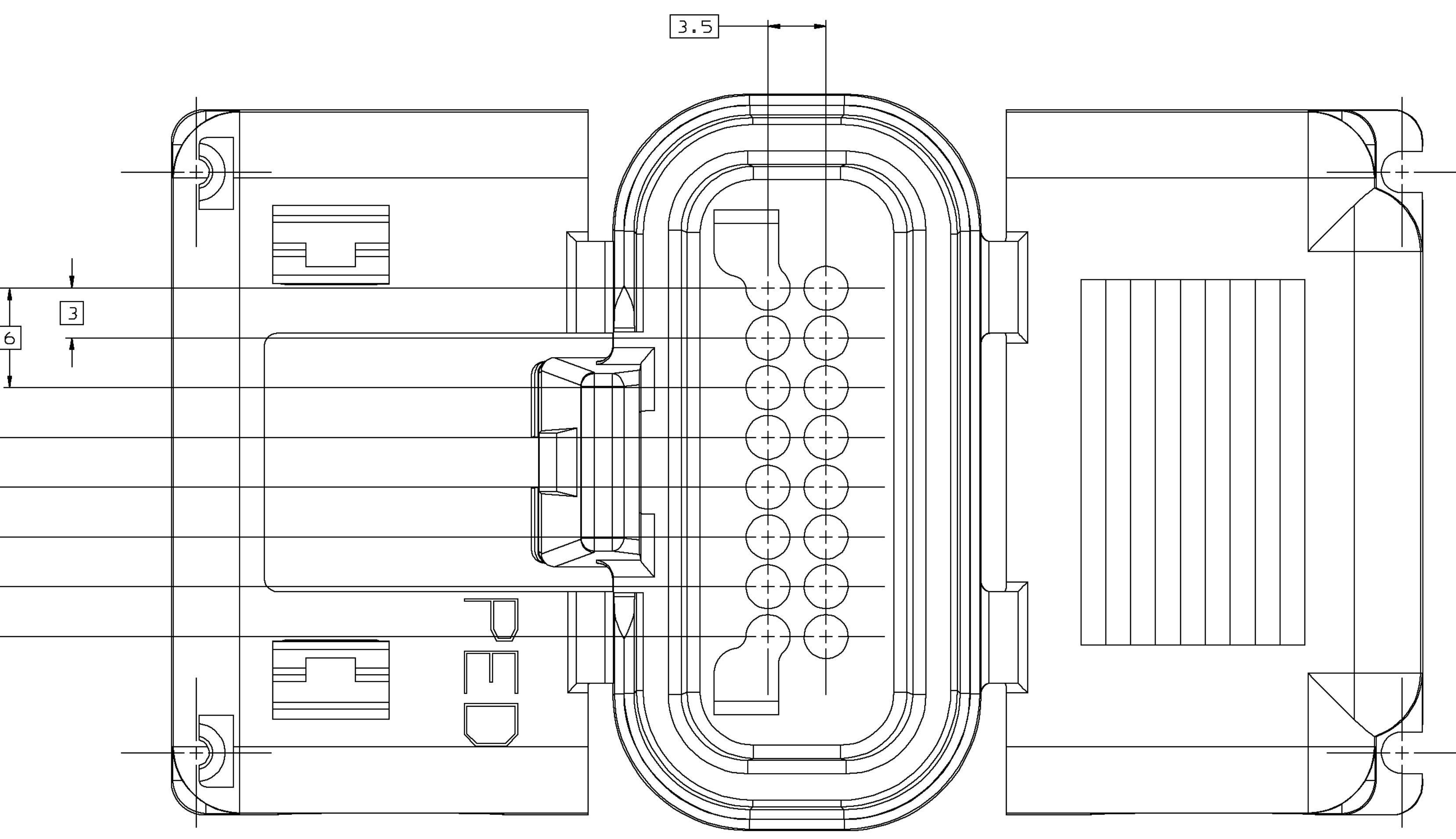
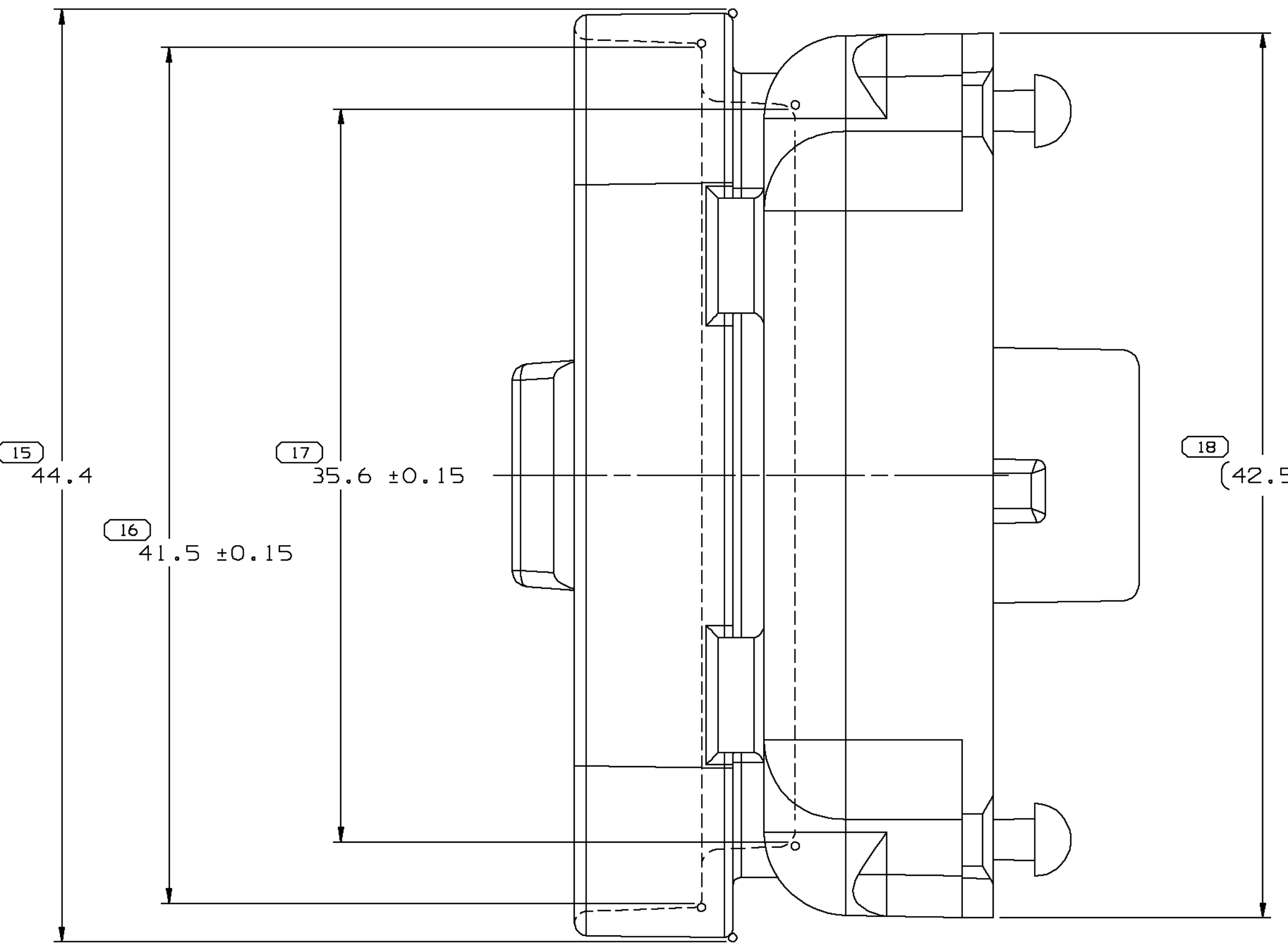
		DELPHI Automotive Systems																																									
MATERIAL SPEC SEE CHART																																											
SUBSTANCES OF CONCERN AND RECYCLED CONTENT PER DELPHI: A-10949001		PART DRAWING DISTR CODE																																									
CODE NUMBER 6901 QC SPEC	DWG DATE 14AP97 STYLE	SCALE S=1 VOLUME cm³ SEE CHART	D																																								
PART GEOMETRY 3D SOLID <div style="text-align: center;">  CHARGE RESTRICTED NO MANUAL CHANGES </div>		UNLESS OTHERWISE SPECIFIED: PERFECT FORM REQUIRED FOR FEATURES OF SIZE AT MMC. TRUE POSITION TOLERANCES AND RELATED DATUM APPLY AT CONDITION OF SIZE INDICATED IN FEATURE CONTROL FRAME. ALL OTHER GEOMETRIC TOLERANCES AND RELATED DATUMS APPLY RFS. SEPARATE TRUE POSITION CALLOUTS MAY BE GAGED SEPARATELY, REDUNDANCE OF DATUM REFERENCE.																																									
COPY OF MATH DATA DO NOT SCALE <div style="text-align: center;"> METRIC UNLESS OTHERWISE SPECIFIED. ALL DIMENSIONS ARE IN MILLIMETERS </div>		REFERENCE 001,701 AP01: R, RAMOS S, AP02: R, RAMOS S, AP03: DAVE SEFKIK AP04 AP05	DATE 14AP97 14AP97 21AP97																																								
<div style="border: 1px solid black; padding: 5px; margin-bottom: 10px;"> (15) PROCESS SENSITIVE DIMENSION </div> <p style="font-size: small;">INDICATES DIMENSIONS IN () INDICATE REFERENCED DIMENSIONS AND NO TOLERANCE LIMITS ARE ESTABLISHED</p>																																											
<table border="1" style="width: 100%; border-collapse: collapse; font-size: x-small;"> <thead> <tr> <th colspan="2">DIMENSIONAL RANGE (MM)</th> <th colspan="2">CHART #1</th> </tr> <tr> <th>> .20</th> <th>> .30</th> <th>> .70</th> <th>> 1.00</th> </tr> </thead> <tbody> <tr> <td>.20 - .30</td> <td>.30 - .70</td> <td>.70 - 1.00</td> <td>1.00 - 2.50</td> </tr> <tr> <td>250</td> <td>200</td> <td>250</td> <td>300</td> </tr> <tr> <td>400</td> <td>300</td> <td>400</td> <td></td> </tr> </tbody> </table>		DIMENSIONAL RANGE (MM)		CHART #1		> .20	> .30	> .70	> 1.00	.20 - .30	.30 - .70	.70 - 1.00	1.00 - 2.50	250	200	250	300	400	300	400		<table border="1" style="width: 100%; border-collapse: collapse; font-size: x-small;"> <thead> <tr> <th colspan="2">DIMENSIONAL RANGE (IN)</th> <th colspan="2">CHART #2</th> </tr> <tr> <th>> .010</th> <th>> .015</th> <th>> .020</th> <th>> .030</th> </tr> </thead> <tbody> <tr> <td>.010 - .015</td> <td>.015 - .020</td> <td>.020 - .030</td> <td>.030 - .040</td> </tr> <tr> <td>10</td> <td>10</td> <td>10</td> <td>10</td> </tr> <tr> <td>10</td> <td>10</td> <td>10</td> <td>10</td> </tr> </tbody> </table>		DIMENSIONAL RANGE (IN)		CHART #2		> .010	> .015	> .020	> .030	.010 - .015	.015 - .020	.020 - .030	.030 - .040	10	10	10	10	10	10	10	10
DIMENSIONAL RANGE (MM)		CHART #1																																									
> .20	> .30	> .70	> 1.00																																								
.20 - .30	.30 - .70	.70 - 1.00	1.00 - 2.50																																								
250	200	250	300																																								
400	300	400																																									
DIMENSIONAL RANGE (IN)		CHART #2																																									
> .010	> .015	> .020	> .030																																								
.010 - .015	.015 - .020	.020 - .030	.030 - .040																																								
10	10	10	10																																								
10	10	10	10																																								



TYPE 102
SAME AS TYPE 101
EXCEPT AS SHOWN
SCALE 2:1

TYPE 10:

NOTES

1. UNLESS OTHERWISE SPECIFIED AND/OR INDICATED:
DIMENSIONS ARE TO FACE OF VIEW SHOWN AND
AUTOMATICALLY ROUNDED BY COMPUTER FOR INSPECTION
[SEE MATH MODEL FOR DIMENSIONS] FOR ALL
OTHER DIMENSIONS NOT SHOWN BUT REQUIRED FOR TOOL
BUILD, SEE MATH MODEL FOR PRECISE TOOL PATH DATA.
2. MATING COMPONENTS OR EQUIVALENT:
CONNECTOR 2 CABLE SEAL 12191066
FEMALE CONNECTOR 12191065
TERMINAL 12084912
MAX INSULATION STRIP MUST BE LESS THAN 2.55 DIA
CONNECTOR POSITION ASSURANCE LOCK 12110299

FRAME NUMBER	SHEET NUMBER	DRAWING NUMBER	DWG STATUS		
2 OF 2	1 OF 1	15326147	STG	REV	N/A
			R	001	-

15326146	A1	-		102	8.966	R0071760 TEEE 82D-BLK
12191068	A5	-		101	8.966	R0071746 TEEE 82D-GRA
PART NO	REV	N/P	STATUS	TYPE	VOLUME	MATERIAL SPECIFICATION AND COLOR

Diagram illustrating a sharp corner tolerance. The tolerance is specified as R 0.1 MAX for the top horizontal surface and R 0.2 MAX for the vertical surface. The text "SHARP CORNER TOLERANCE" is written below the diagram.

FROM		DIMENSIONAL RANGE (MM)						CHART E1		FRAME NUMBER	
TO		0	> 20	> 30	> 70	> 100	> 150	> 200	> 250	> 300	
		20	30		100	150	200	250	300	400	
TOLERANCE UNLESS OTHERWISE SPECIFIED											
		±0.15	±0.2	±0.3	±0.4	±0.5	±0.6	±0.8	±1	±1.2	

1 OF 2

SHEET NUMBER		DRAWING NUMBER		DWG STATUS			SHEET NUMBER
1	OF 1	15326147		STD	REV	N/P	
				R	001	-	

Mouser Electronics

Authorized Distributor

Click to View Pricing, Inventory, Delivery & Lifecycle Information:

[Delphi Connection Systems:](#)

[12191068](#)