

MICRO SWITCH
a Honeywell Division

FED. MFG. CODE 91929

SWITCH - BASIC

CATALOG LISTING

39HM50

39HM50

CATALOG
LISTING



ISSUE

2

PAGE 1 OF 1

REPLACES X110110-HM

RELEASE NO. PR-23830

CHECK

REVISIONS

A	C095939
TSM	
13 JAN 00	

CHECK

05MAY99

JAF

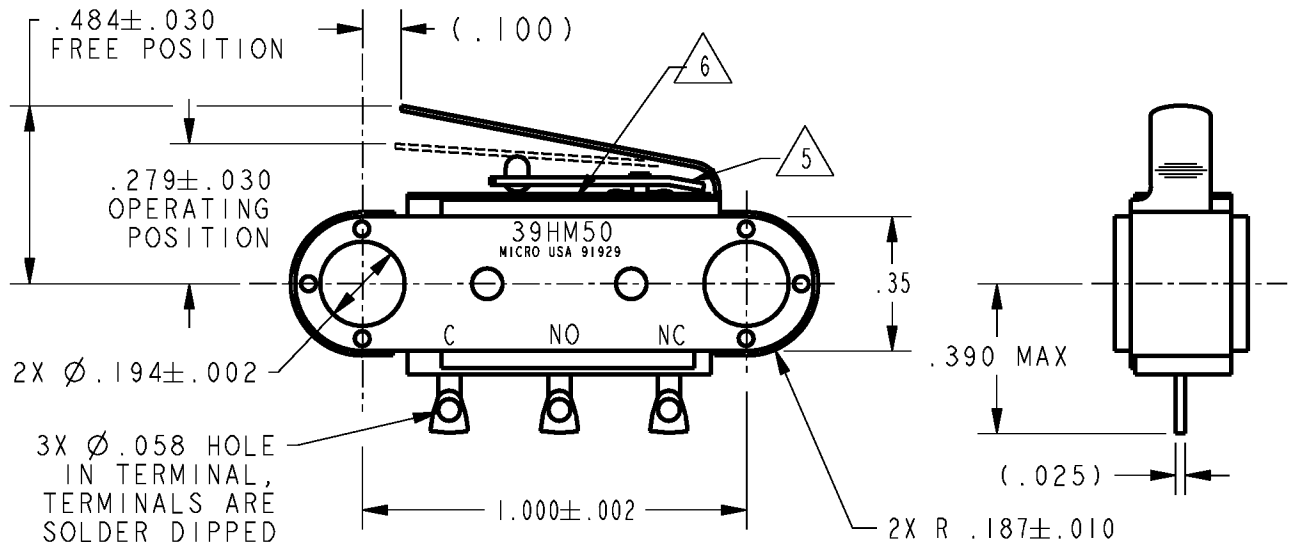
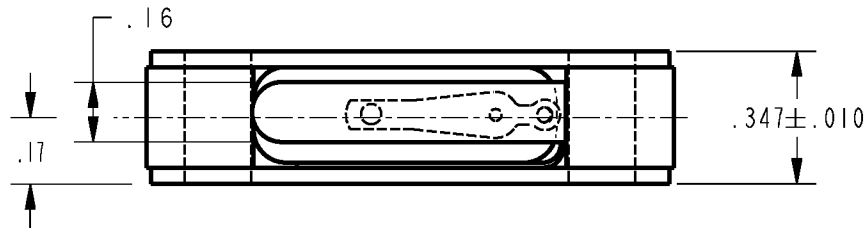
CHECK

05MAY99

GRT

PTC/CAD 2D

DRAWN

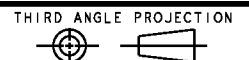


NOTES

- 1 - MOUNTING HOLES WILL ACCEPT PINS OR SCREWS OF $\varnothing 190$ ON $1.000 \pm .002$ CENTERS
- 2 - FOR USE IN TEMPERATURE RANGE -85° TO $+500^{\circ}$ F CONTINUOUS
- 3 - ALL EXPOSED PARTS ARE OF CORROSION RESISTANT MATERIALS
- 4 - CONTAINS 19HMI TYPE HIGH TEMPERATURE BASIC (GOLD CONTACTS)
- 5 - ADJUSTMENT CAUTION: DO NOT ALLOW ACTUATOR LEAF TO COME IN CONTACT WITH HM LEVER TO PREVENT SWITCH SEAL DAMAGE
- 6 - SWITCH MARKED WITH CATALOG LISTING, MICRO USA, DATE CODE, AND CIRCUITRY

ANSI Y14.5M-1982 APPLIES

THIS DRAWING COVERS A PROPRIETARY ITEM AND IS THE PROPERTY OF MICRO SWITCH, A DIVISION OF HONEYWELL. THIS DRAWING IS NOT TO BE COPIED OR USED WITHOUT THE APPROVAL OF MICRO SWITCH.



CHARACTERISTICS

OPERATING FORCE ----- 9 OZ MAX
RELEASE FORCE ----- 2 OZ MIN
DIFFERENTIAL TRAVEL ----- .018 MAX
OVERTRAVEL ----- .008 MIN

ELECTRICAL DATA

CONTACT ARRANGEMENT
S P D T

LINE VOLTAGE	INDUCTIVE LOAD	RESISTIVE LOAD
28 VDC	250 MA	500 MA

SCALE 2 : 1

DO NOT
SCALE PRINT

UNLESS OTHERWISE SPECIFIED
TOLERANCES ARE
ONE PLACE (.0) $\pm .030$
TWO PLACE (.00) $\pm .015$
THREE PLACE (.000) $\pm .005$
ANGLES \pm

WEIGHT 2.5 OZ MAX

Mouser Electronics

Authorized Distributor

Click to View Pricing, Inventory, Delivery & Lifecycle Information:

[Honeywell:](#)

[39HM50](#)