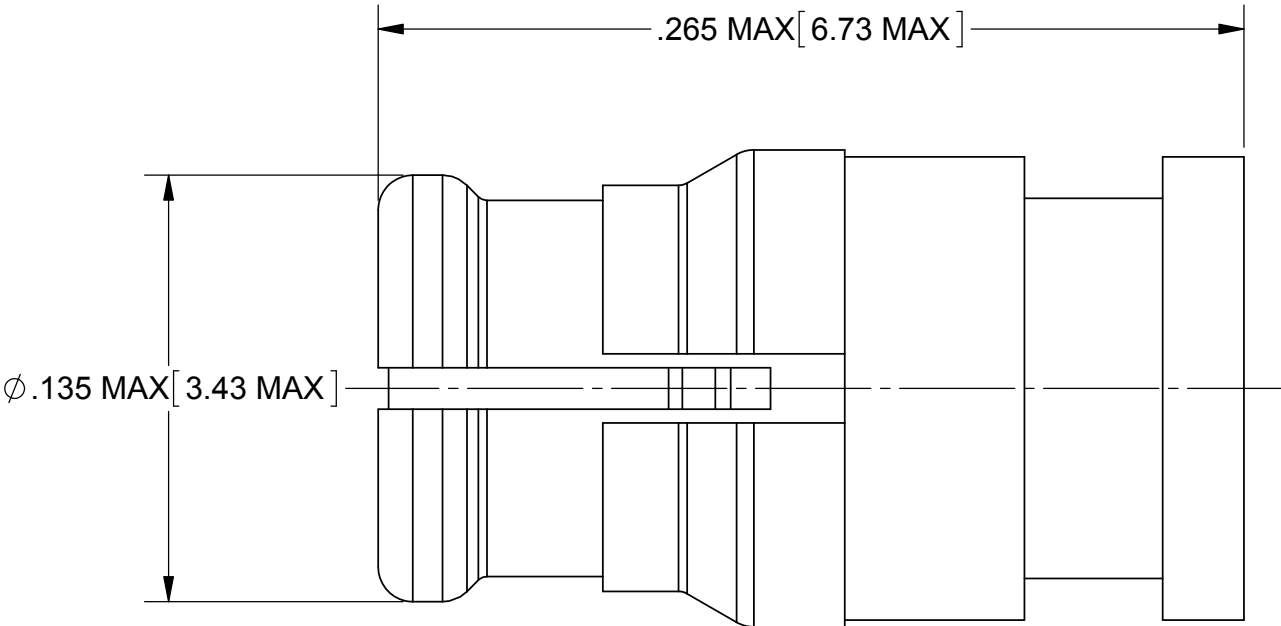
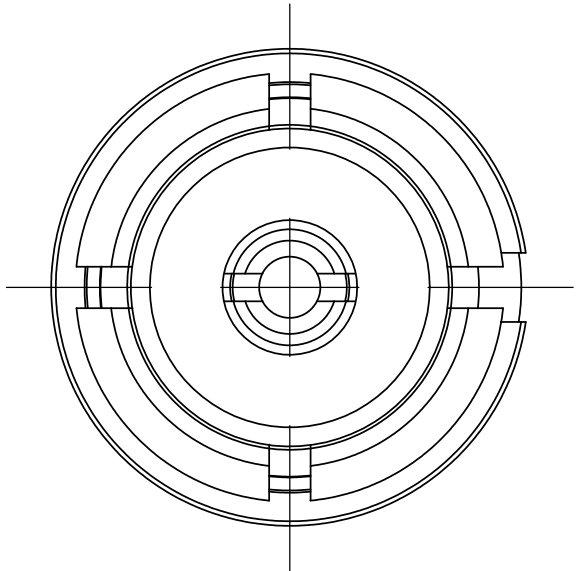
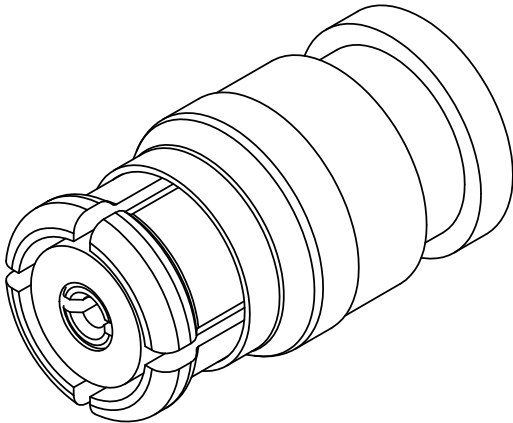


PRODUCT DATA DRAWING

REVISION HISTORY			
REV	DESCRIPTION	DATE	APPROVED
-	DCN 36081	09/08	STW
A	DCN 41510	07/15	STW



MATERIAL:


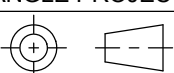
BODY, ALIGNMENT RING & CONTACT:	BERYLLIUM COPPER
INSULATOR:	PTFE

FINISH:

BODY, ALIGNMENT RING & CONTACT:	GOLD OVER NICKEL
---------------------------------	------------------

PERFORMANCE:

IMPEDANCE:	50 OHMS
FREQ. RANGE:	DC TO 26.5 GHz.
VSWR:	1.30:1 DC TO 26.5 GHz.
INSERTION LOSS:	.12 X SQRT(F(F IN GHz))

MATERIAL:	SEE NOTES	DIMENSIONS ARE IN INCHES TOLERANCES:  FRACTIONAL: ±1/64    ANGULAR: X°    ±1°0'    X°X' ±15'  DECIMAL: .X    ±.030 .XX    ±.010 .XXX ±.005  INTERPRET DIMENSIONS AND TOLERANCES PER ASME Y14.5M - 1994	UNLESS OTHERWISE SPECIFIED  1) ALL DIMENSIONS ARE IN INCHES (MILLIMETERS) 2) ALL DIMENSIONS ARE AFTER PLATING. 3) BREAK CORNERS & EDGES .005 R MAX. 4) CHAM. 1ST & LAST THREADS. 5) SURFACE ROUGHNESS 63-MIL-STD-10. 6) DIA.'S ON COMMON CENTERS TO BE CONCENTRIC WITHIN T.I.R. 7) REMOVE ALL BURRS	<div> 2400 Centrepark West Drive, Suite 100 West Palm Beach, FL 33409</div>		
FINISH:	SEE NOTES			TITLE: <div>SMP ST. FEMALE FOR Ø.085 CABLE</div>		
SURFACE AREA:	N/A			SIZE   CAGE CODE   DWG. NO.   <div>B   95077   1221-4009</div>		
PROPRIETARY <div>THE INFORMATION CONTAINED IN THIS DRAWING IS THE SOLE PROPERTY OF SV MICROWAVE, INC. ANY REPRODUCTION IN PART OR AS A WHOLE WITHOUT THE WRITTEN PERMISSION OF SV MICROWAVE, INC IS PROHIBITED.</div>		THIRD ANGLE PROJECTION <div></div>	DRAWN: HLP 09/22/08		SCALE: 18:1	
			CHECKED: STW 09/22/08			
			APPROVED: STW 09/22/08		SHEET 1 OF 1	