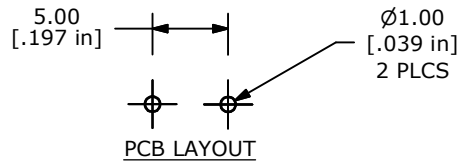
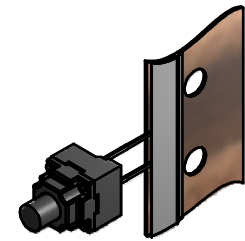


CIRCUIT: SPST



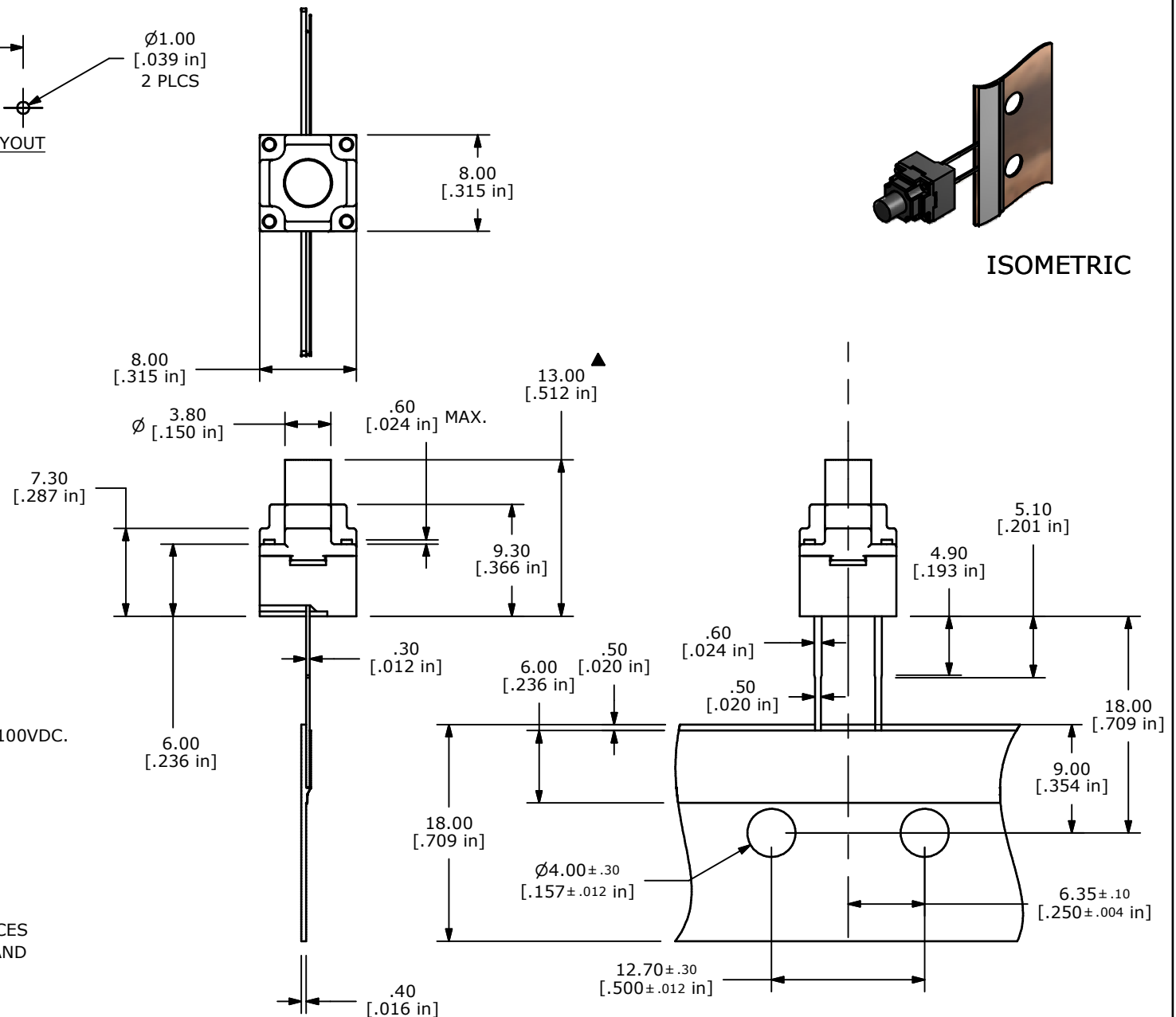
PCB LAYOUT



ISOMETRIC

## NOTES:

1. ALL DIMENSIONS IN MM [INCH]
2. GENERAL TOLERANCE: X.X=±0.4  
X.XX=±0.25
3. RATING: 12VDC @ 50mA
4. CONTACT RESISTANCE: 100mΩ MAX.
5. INSULATION RESISTANCE: 100MΩ MIN @100VDC.
- ▲ 6. OPERATING FORCE: 160 ± 50gf
- ⊕ 7. TRAVEL: 0.3 +0.1/-0.1mm
8. OPERATING TEMPERATURE: -25°C TO 85°C
9. OPERATING LIFE: 100,000 CYCLES
10. SILVER CONTACTS.
11. SEALED TO IP67
12. ▲ DENOTES CRITICAL PARAMETERS
13. 2002/95/EC (ROHS) COMPLIANT
14. PARTS ARE RADIAL PACKAGED, 1000 PIECES PER PACK. PARTS ARE ZIG-ZAG FOLDED AND 1 SWITCH IS REMOVED AT EVERY FOLD.



| C   | 18747  | CORRECT TOLERANCE IN NOTE #7 | 12/23/09 | BLR |
|-----|--------|------------------------------|----------|-----|
| B   | 18734  | chg travel tol from +.2/- .1 | 12/8/09  | rc  |
| A   | 18567  | Release For Production       | 7/9/09   | BLR |
| REV | PCR NO | DESCRIPTION                  | DATE     | BY  |

THE INFORMATION CONTAINED IN THIS DOCUMENT IS PROPRIETARY  
TO E-SWITCH AND IS NOT TO BE COPIED OR TRANSFERRED



E-SWITCH®



TITLE TL52AF160Q

SCALE 2=1

DATE 12/23/2009

DR BLR

DWG P002001

REV C