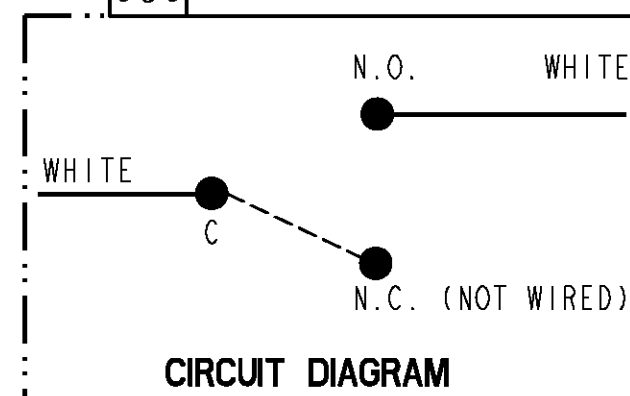


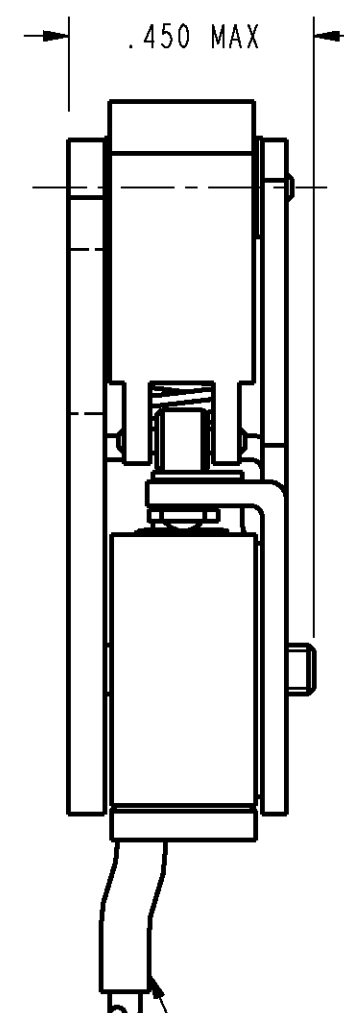
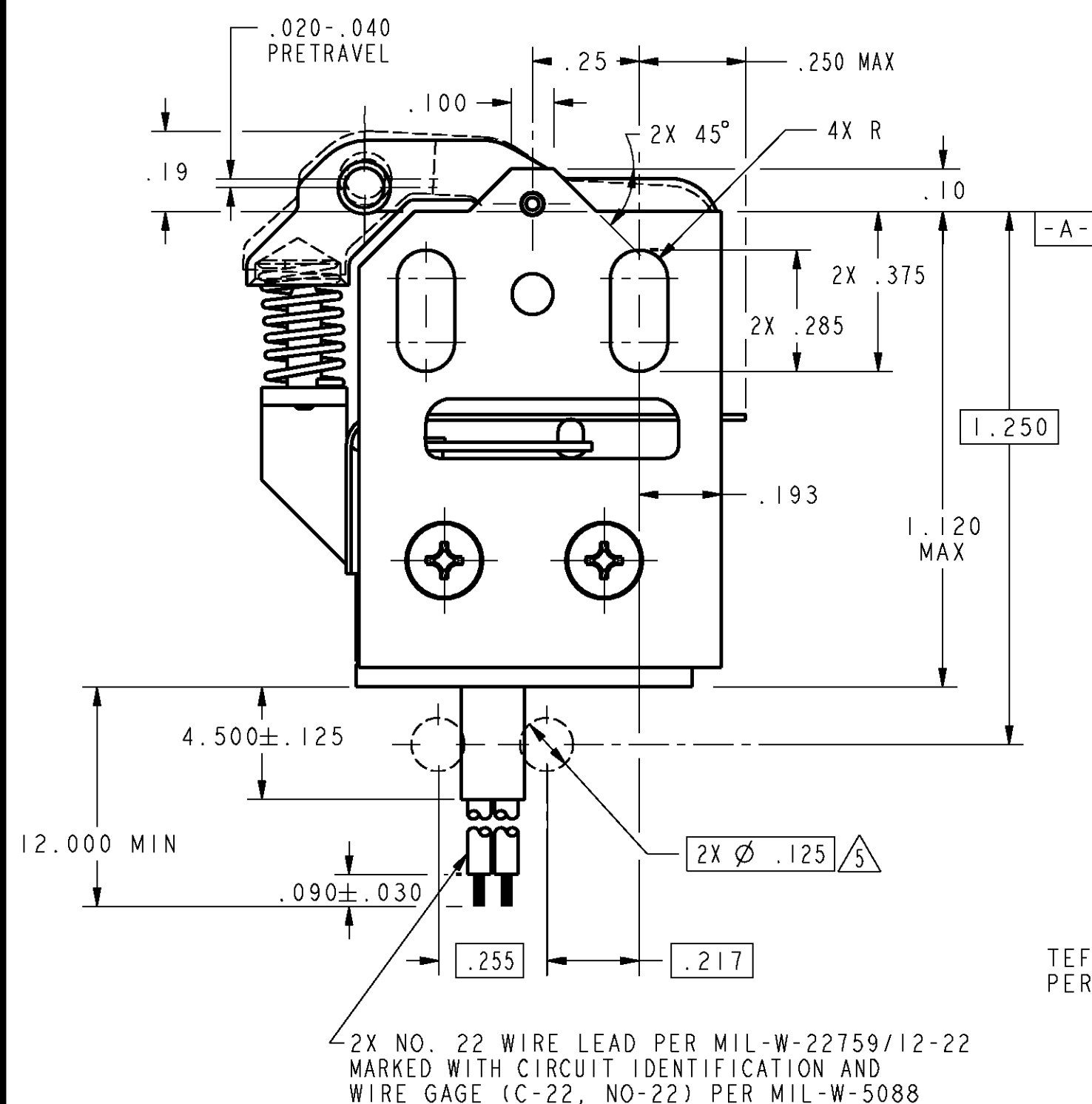
M

38HM30

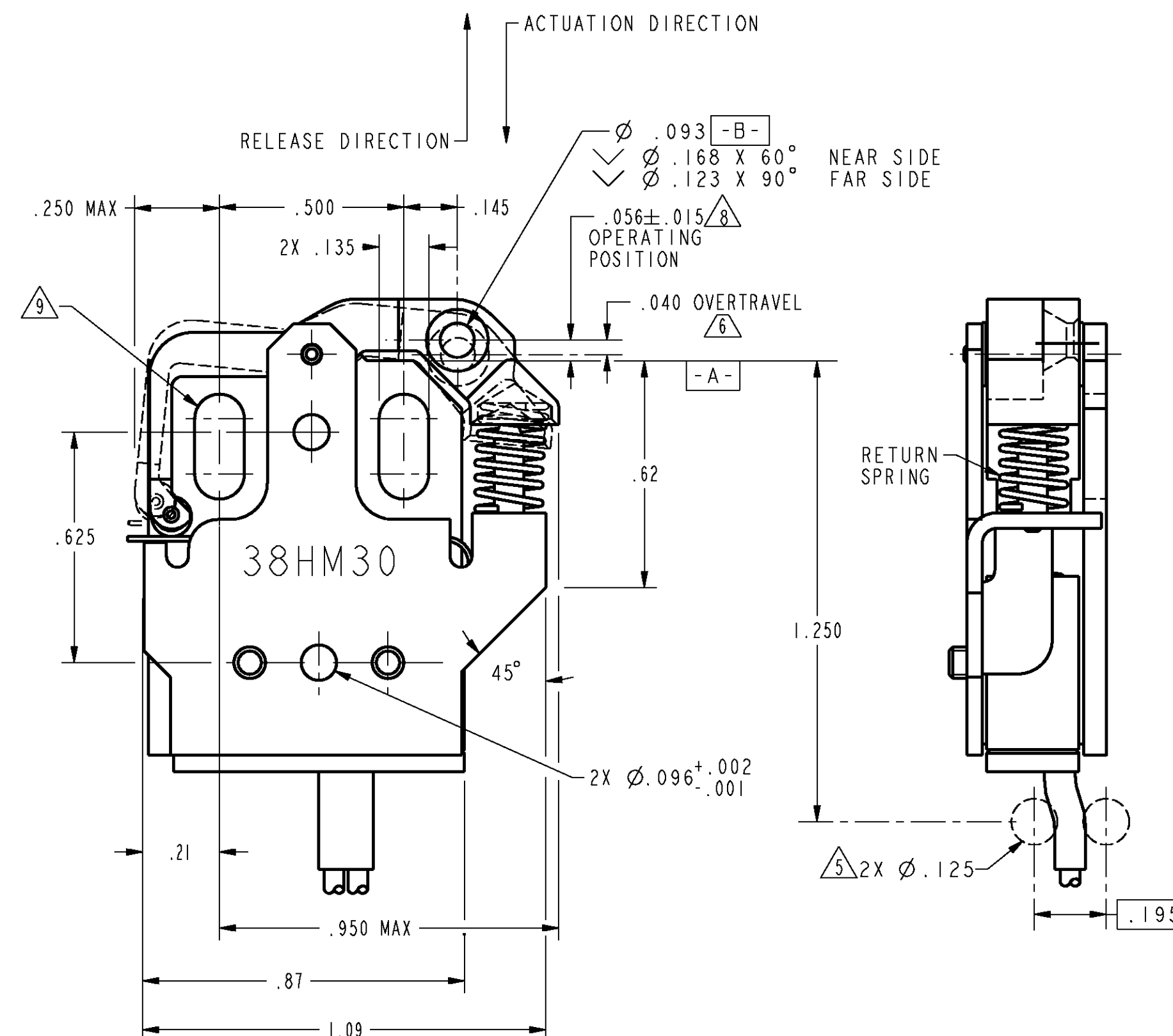


## NOTES

- 1 - ASSEMBLY INCLUDES "120HM" TYPE BASIC SWITCH
- 2 - SWITCH IS HERMETICALLY SEALED (METAL-TO-METAL, GLASS-TO-METAL) PER MIL-S-8805
- 3 - FOR USE IN TEMPERATURE RANGE -85°F TO +500°F
- 4 - ALL EXPOSED PARTS ARE OF CORROSION RESISTANT MATERIALS
- 5 - GAGE PINS FOR LEAD PLACEMENT
- 6 - RECOMMEND USE OF .015-.040 OVERTRAVEL
- 7 - MECHANICAL AND ELECTRICAL LIFE: 100,000 OPERATIONS
- 8 - OPERATING POSITION MEASURED AT **-B-** SHALL NOT VARY MORE THAN  $\pm .008$  DURING LIFE OF THE SWITCH
- 9 - NO INTERFERENCE ALLOWED WITH NAS1382 SIZE .112-40 SOCKET HEAD CAP SCREWS (2 PLACES) IN ANY ADJUSTMENT POSITION THROUGHOUT FULL RANGE OF SWITCH TRAVEL



TEFLON (PTFE) TUBING  
PER AMS 3655-11 OVER  
WIRE LEADS



CHARACTERISTICS	ELECTRICAL DATA
OPERATING FORCE ----- 30 OZ MAX	CONTACT ARRANGEMENT S P N O
RELEASE FORCE ----- 12 OZ MIN	28 VOLTS DC RATING
DIFFERENTIAL TRAVEL ---- .020 MAX	INDUCTIVE --- SEA LEVEL --- 0.1 AMP
OVERTRAVEL ----- .040 MIN	70,000 FT --- 0.1 AMP
	RESISTIVE --- SEA LEVEL --- 0.1 AMP
	70,000 FT --- 0.1 AMP

ANSI Y14.5M-1982 APPLIES

THIS DRAWING COVERS A PROPRIETARY ITEM AND IS THE PROPERTY OF MICRO SWITCH, A DIVISION OF HONEYWELL. THIS DRAWING IS NOT TO BE COPIED OR USED WITHOUT THE APPROVAL OF MICRO SWITCH.

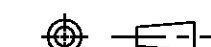
**MICRO SWITCH**  
a Honeywell Division

**SWITCH - ASSEMBLY**

CATALOG LISTING

**38HM30**

THIRD ANGLE PROJECTION



SCALE 3 : 1

DO NOT SCALE PRINT

UNLESS OTHERWISE SPECIFIED  
TOLERANCES ARE

ONE PLACE (.0) ± .030

TWO PLACES (.00) ± .015

THREE PLACES (.000) ± .005

ANGLES ± 3°

WEIGHT 30 GRAMS MAX

# Mouser Electronics

Authorized Distributor

Click to View Pricing, Inventory, Delivery & Lifecycle Information:

[Honeywell:](#)

[38HM30](#)