

PRODUCT NUMBER
98401-XXX-XXLF

WHEN REQUIRED, ADD SUFFIX LETTER "LF"
INDICATES THE PRODUCT IS RoHS
COMPATIBLE, SEE NOTE 7

TOTAL NB OF POSITIONS, 8 TO 50

PACKAGING TYPE, NOTE 3

PLATING

1=0.76µm GOLD/GXT ON CONTACT AREA
3.81µm TIN-LEAD ON TAIL

4=3.81µm TIN-LEAD ON CONTACT AREA
AND ON TAIL

8=0.38µm GOLD/GXT ON CONTACT AREA
3.81µm TIN-LEAD ON TAIL

WHEN "LF" IS REQUIRED, 2µm MIN
MATTE TIN OVER 1.27µm MIN NICKEL
INSTEAD OF TIN-LEAD

NOTES:

1. HOUSING MAT'L : HIGH TEMPERATURE
THERMOPLASTIC. UL94V-0 COLOR: BLACK

2. PIN MATERIAL : PHOSPHOR BRONZE

3. PACKAGING

- = POLY BAGS

A = TAPE & REEL WITH PICK UP CAP
(SEE TA840 FOR PRODUCT AVAILABILITY)

TV = TUBE WITHOUT PICK UP CAP FOR VALEO

K = TARE & REEL WITHOUT PICK-UP CAP.

4. 9N MIN RETENTION IN EITHER DIRECTION

5. TO DETERMINE DIMENSIONS :
N = NUMBER OF POSITIONS PER ROW
EXAMPLE : 8 POS N x 2.54 = 20.32mm

6. HOLE DIMENSION TO BE $\phi 1.6 \pm 0.03$ FOR
INTERFERENCE FIT APPLICATIONS.
HOLE DIMENSIONS TO BE $\phi 1.95 \pm 0.05$ FOR
LOCATION APPLICATION WITH AUTOMATIC
PICK AND PLACE MACHINES.

7. RoHS COMPATIBLE PRODUCT SPECIFICATIONS

a - PLATING:

- "LF" MEANS THE PRODUCT IS LEAD-FREE,
2µm MINIMUM MATTE TIN OVER 1.27µm
MINIMUM NICKEL UNDERPLATE.

b - MANUFACTURING PROCESS COMPATIBILITY

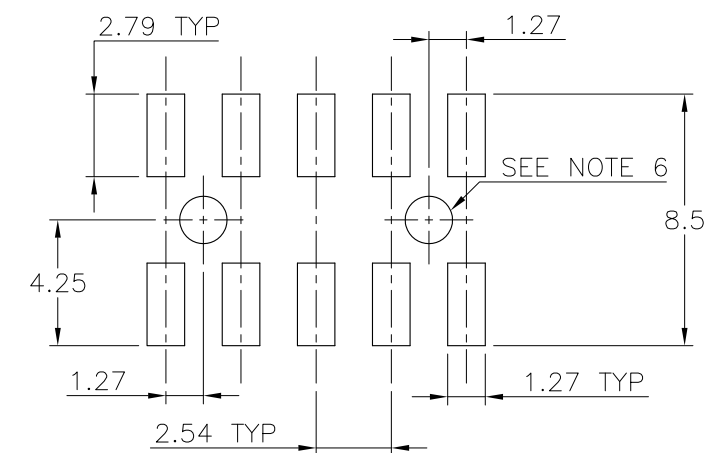
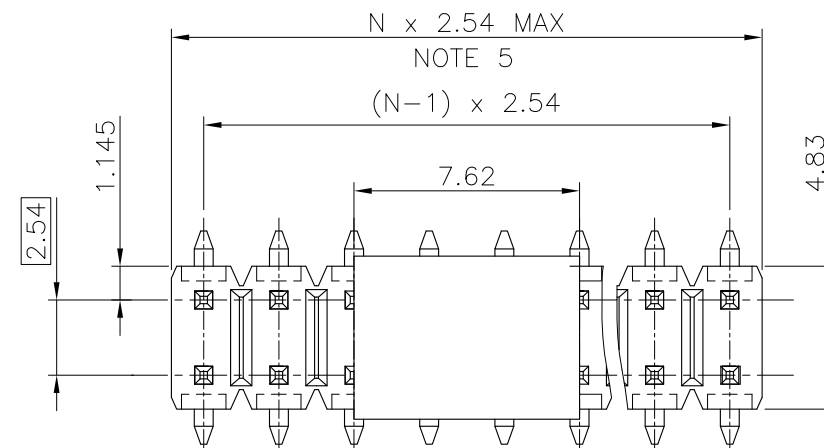
- THE HOUSING WILL WITHSTAND EXPOSURE TO
260°C PEAK TEMPERATURE FOR 30 SECONDES
IN A CONVECTION, INFRA-RED OR VAPOR
PHASE REFLOW OVEN.

c - LABELING:

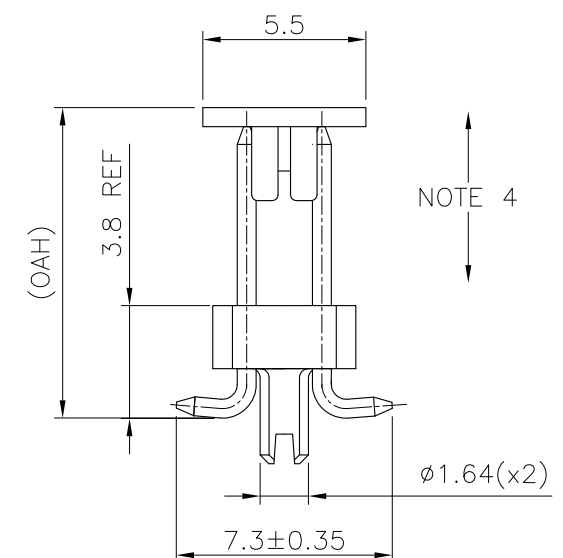
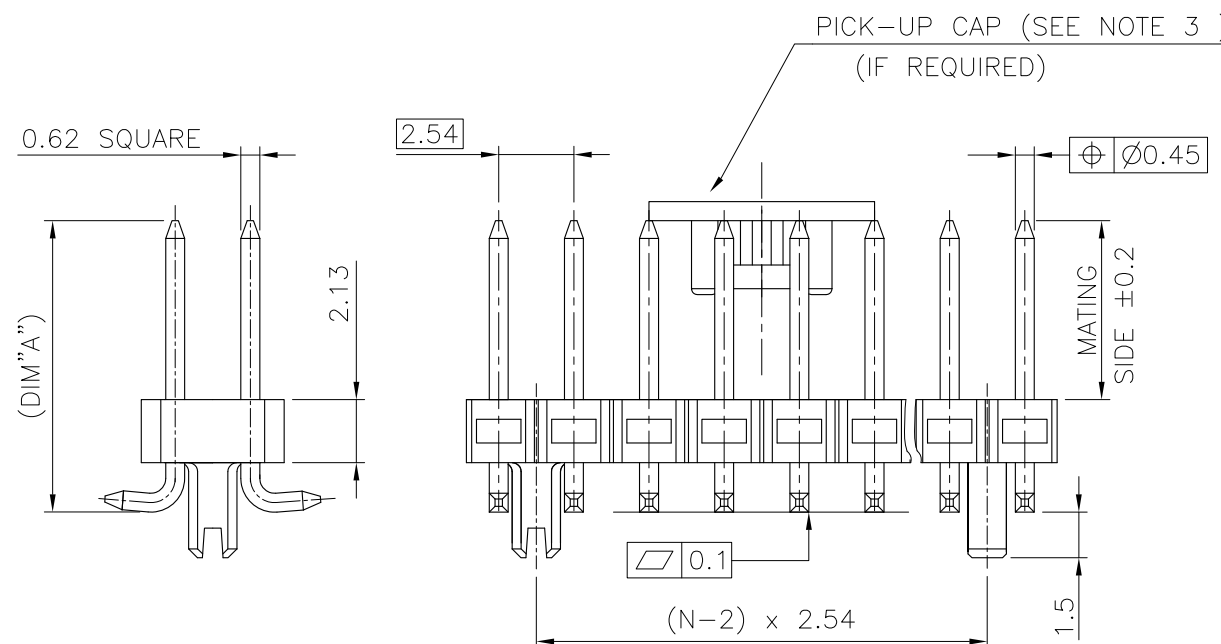
- MEETS PACKAGING SPECS AS PER GS-14-920

d - LEGAL STATEMENT: SEE GS-22-0004

PIN STYLE	MATING	DIM "A"	OAH
01	5.84	9.6	10.2
02	8.08	11.8	12.4
03	13.00	16.8	17.4
06	10.50	14.3	14.9
07	14.50	18.3	18.9



RECOMMENDED PAD LAYOUT



mat'l. code SEE NOTES				surface ISO 1302	tolerance ISO 406 ISO 1101	projection	product family BERGSTIK
ltr	ecn no	dr	date	tolerances unless otherwise specified		mm	title UNSHR.HEADER DR SMT
J	F11-0031	LMU	11.03.24	angles	linear		dwg no 98401
K	F11-0320	LMU	12.01.25				
L	F12-0025	JCO	12.03.07	dr	D.LE	01.01.24	sheet 1 of 1
M	F12-0057	LMU	12.05.15	enrg	JM.C	01.01.24	size A3
N	F12-0084	LMU	12.07.06	chr	JM.C	01.01.24	type CUSTOMER
P	F12-0839	JFA	12.12.06	appd	JF.N	01.01.24	
sheet index	revision sheet						Drawing

Mouser Electronics

Authorized Distributor

Click to View Pricing, Inventory, Delivery & Lifecycle Information:

FCI:

[98401-801-46LF](#)