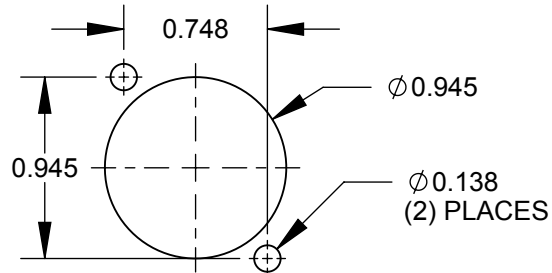


M3 x 0.5  
METRIC THREAD  
(2) PLACES

**EHBNC2M3 & EHBNC2BM3**



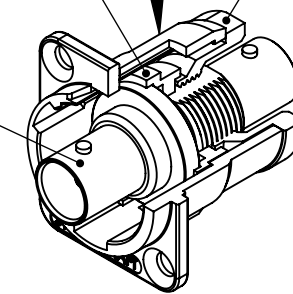
**RECOMMENDED  
PANEL CUT-OUT**

STANDARD E SERIES HOUSING  
SEE TABLE FOR FINISH

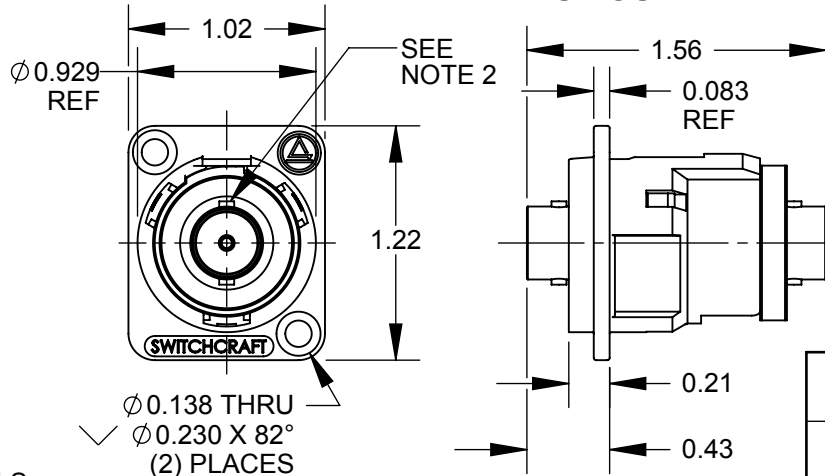
HOUSING INSERT

RETAINING NUT

BNC-TO-BNC  
JACK



**EHBNC2 SHOWN**



**NOTES:**

1. MATERIALS:  
HOUSING - ZINC ALLOY  
HOUSING INSERT - THERMOPLASTIC, BLACK  
RETAINING NUT - THERMOPLASTIC, BLACK  
BNC JACK - COPPER ALLOY, NICKEL PLATED

**E** 2. ORIENTATION OF BAYONET POSTS  $\pm 10^\circ$  FROM VERTICAL.

3. THESE PRODUCTS ARE RoHS COMPLIANT.

PART NUMBER	HOUSING FINISH	MOUNTING HOLES
EHBNC2	NICKEL PLATED	COUNTERSINK FOR #4 FLAT HEAD SCREWS
EHBNC2B	BLACK CHROME	COUNTERSINK FOR #4 FLAT HEAD SCREWS
EHBNC2M3	NICKEL PLATED	M3 x 0.5 THREAD
EHBNC2BM3	BLACK CHROME	M3 x 0.5 THREAD

**CUSTOMER DRAWING**

					<div>UNLESS OTHERWISE SPECIFIED</div> <div>1. ALL DIMENSIONS IN INCHES</div> <div>- TWO PLACE DECIMALS     ±0.02</div> <div>- THREE PLACE DECIMALS   ±0.005</div>	THIS DRAWING DESCRIBES A DESIGN CONSIDERED PROPRIETARY IN NATURE, DEVELOPED AND MANUFACTURED BY SWITCHCRAFT INC. AND IS RELEASED ON A CONFIDENTIAL BASIS FOR IDENTIFICATION PURPOSES ONLY.					
						SIZE	WIDTH		MULT	LBS/M	TEMPER
						FINISH				MATERIAL	
						SPEC No.				SPEC No.	
E	27546	7-24-15	TO	TJK		FIRST USED ON		SCALE 1:1		<div>Switchcraft®</div>	
D	27482	04/20/15	PC	TJK		DATE DRAWN	BY	CHKD	APVD		
C	26415	7/17/09	RS	TJK		5/5/03	MA	MA	MA		
								10/31/03	10/31/03		
REV	ECO NUMBER	DATE	BY	APVD	NAME E SERIES CONNECTOR, BNC FEEDTHROUGH, RoHS				PART No. EHBNC2 SERIES		REV E
REVISIONS					DO NOT SCALE DRAWING						

SolidWorks CAD File

