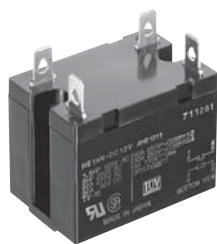


Panasonic

TV-10/TV-15 rated
1a 30A 2a 20A
power relays

HE RELAYS



1 Form A Plug-in type



Form A type also available with
48A contact capacity

Refer to data sheet, starting on [page 9](#).

FEATURES

1. Excellent resistance to contact welding

Owing to the pre-tension and kick-off mechanism, the 1 Form A passes TV-15 and the 2 Form A passes TV-10.

2. High-capacity and long life

Contact arrangement	1 Form A type	2 Form A type
Contact capacity	30A	20A
Electrical life (at 20 times/min.)	2×10 ⁵	
Mechanical life (at 180 times/min.)	DC type: 10 ⁷ , AC type: 5×10 ⁶	

3. Excellent surge resistance

Between contacts and coil, the surge voltage is more than 10,000 V (when surge waveform accords with JEC-212-1981).

4. Compatible with all major safety standards

UL, CSA, VDE and TÜV certified

TYPICAL APPLICATIONS

1. Office equipment

Copiers, package air conditioners, automatic vending machines.

2. Industrial equipment

Machine tools, molding equipment, wrapping machines, food processing equipment, etc.

3. Home appliances

Air conditioners, microwave ovens, televisions, stereo systems, water heaters and air heating equipment.

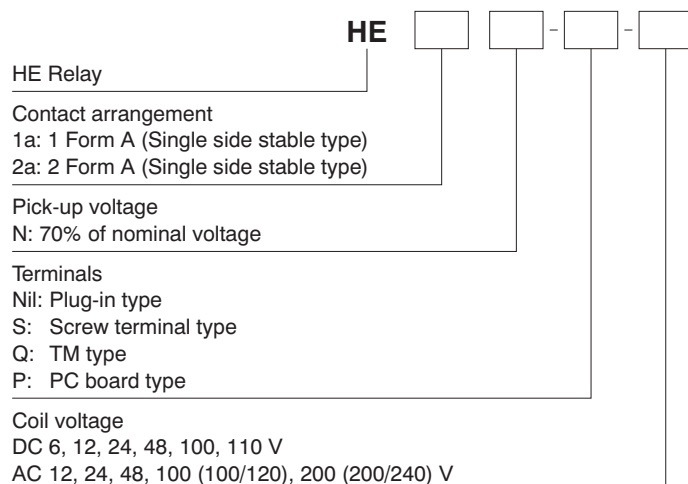
Type		Single side stable type	
		HE 1 Form A, 2 Form A	
Insulation gap		Min. 8 mm	
Distance between contacts*		1 Form A and 2 Form A: Min. 3 mm	PC board type: Min. 2.5 mm
Breakdown voltage	Between open contacts	2, 000 Vrms for 1 min.	
	Between contact and coil	5, 000 Vrms for 1 min.	

*Reference value

CLASSIFICATION

Type	PC board	Plug-in		TM		Screw terminal	
Operating function	Single side stable						
Contact arrangement	1 Form A	1 Form A	2 Form A	1 Form A	2 Form A	1 Form A	2 Form A

ORDERING INFORMATION



TYPES

1. PC board type (1 Form A, DC coil) (Single side stable)

Coil voltage	1 Form A	Packing quantity	
	Part No.	Carton	Case
6V DC	HE1aN-P-DC6V	25 pcs.	100 pcs.
12V DC	HE1aN-P-DC12V		
24V DC	HE1aN-P-DC24V		
48V DC	HE1aN-P-DC48V		
100V DC	HE1aN-P-DC100V		
110V DC	HE1aN-P-DC110V		

2. Plug-in type (Single side stable)

Type	Coil voltage	1 Form A	2 Form A	Packing quantity	
		Part No.	Part No.	Carton	Case
DC type	6V DC	HE1aN-DC6V	HE2aN-DC6V	20 pcs.	100 pcs.
	12V DC	HE1aN-DC12V	HE2aN-DC12V		
	24V DC	HE1aN-DC24V	HE2aN-DC24V		
	48V DC	HE1aN-DC48V	HE2aN-DC48V		
	100V DC	HE1aN-DC100V	HE2aN-DC100V		
	110V DC	HE1aN-DC110V	HE2aN-DC110V		
AC type	12V AC	HE1aN-AC12V	HE2aN-AC12V	20 pcs.	100 pcs.
	24V AC	HE1aN-AC24V	HE2aN-AC24V		
	48V AC	HE1aN-AC48V	HE2aN-AC48V		
	100/120V AC	HE1aN-AC100V	HE2aN-AC100V		
	200/240V AC	HE1aN-AC200V	HE2aN-AC200V		

3. TM type (Single side stable)

Type	Coil voltage	1 Form A	2 Form A	Packing quantity	
		Part No.	Part No.	Carton	Case
DC type	6V DC	HE1aN-Q-DC6V	HE2aN-Q-DC6V	20 pcs.	100 pcs.
	12V DC	HE1aN-Q-DC12V	HE2aN-Q-DC12V		
	24V DC	HE1aN-Q-DC24V	HE2aN-Q-DC24V		
	48V DC	HE1aN-Q-DC48V	HE2aN-Q-DC48V		
	100V DC	HE1aN-Q-DC100V	HE2aN-Q-DC100V		
	110V DC	HE1aN-Q-DC110V	HE2aN-Q-DC110V		
AC type	12V AC	HE1aN-Q-AC12V	HE2aN-Q-AC12V	20 pcs.	100 pcs.
	24V AC	HE1aN-Q-AC24V	HE2aN-Q-AC24V		
	48V AC	HE1aN-Q-AC48V	HE2aN-Q-AC48V		
	100/120V AC	HE1aN-Q-AC100V	HE2aN-Q-AC100V		
	200/240V AC	HE1aN-Q-AC200V	HE2aN-Q-AC200V		

4. Screw terminal type (Single side stable)

Type	Coil voltage	1 Form A	2 Form A	Packing quantity	
		Part No.	Part No.	Carton	Case
DC type	6V DC	HE1aN-S-DC6V	HE2aN-S-DC6V	10 pcs.	50 pcs.
	12V DC	HE1aN-S-DC12V	HE2aN-S-DC12V		
	24V DC	HE1aN-S-DC24V	HE2aN-S-DC24V		
	48V DC	HE1aN-S-DC48V	HE2aN-S-DC48V		
	100V DC	HE1aN-S-DC100V	HE2aN-S-DC100V		
	110V DC	HE1aN-S-DC110V	HE2aN-S-DC110V		
AC type	12V AC	HE1aN-S-AC12V	HE2aN-S-AC12V	10 pcs.	50 pcs.
	24V AC	HE1aN-S-AC24V	HE2aN-S-AC24V		
	48V AC	HE1aN-S-AC48V	HE2aN-S-AC48V		
	100/120V AC	HE1aN-S-AC100V	HE2aN-S-AC100V		
	200/240V AC	HE1aN-S-AC200V	HE2aN-S-AC200V		

Note: The TM type of the screw terminals are also available.

RATING**1. Coil data****1) AC coils**

Coil voltage	Pick-up voltage (at 20°C 68°F)	Drop-out voltage (at 20°C 68°F)	Nominal operating current [±10%] (at 20°C 68°F)	Nominal operating power	Max. allowable voltage (at 20°C 68°F)
12V AC	70%V or less of nominal voltage (Initial)	15%V or more of nominal voltage (Initial)	138mA	1.7VA	110%V of nominal voltage
24V AC			74mA	1.8VA	
48V AC			39mA	1.9VA	
100/120V AC			18.7 to 2.1mA	1.9 to 2.7VA	
200/240V AC			9.1 to 10.8mA	1.8 to 2.6VA	

2) DC coils

Coil voltage	Pick-up voltage (at 20°C 68°F)	Drop-out voltage (at 20°C 68°F)	Nominal operating current [±10%] (at 20°C 68°F)	Coil resistance [±10%] (at 20°C 68°F)	Nominal operating power	Max. allowable voltage (at 55°C 131°F)
6V DC	70%V or less of nominal voltage (Initial)	10%V or more of nominal voltage (Initial)	320mA	18.8Ω	1.92W	110%V of nominal voltage
12V DC			160mA	75Ω	1.92W	
24V DC			80mA	300Ω	1.92W	
48V DC			40mA	1,200Ω	1.92W	
100V DC			19mA	5,200Ω	1.92W	
110V DC			18mA	6,300Ω	1.92W	

2. Specifications

Characteristics	Item		Specifications	
Contact	Arrangement		1 Form A	2 Form A
	Initial contact resistance, max		Max. 100 mΩ (By voltage drop 6 V DC 1A)	
	Contact material		AgSnO ₂ type	
Rating	Nominal switching capacity (resistive load)		30A 277V AC	25A 277V AC
	Max. switching power		8,310VA	6,925VA
	Max. switching voltage		277V AC, 30V DC	
	Max. switching current		30A	25A
	Nominal operating power		DC: 1.92W, AC: 1.7 to 2.7VA	
	Min. switching capacity (Reference value)*1		100mA 5V DC	
Electrical characteristics	Insulation resistance (Initial)		Min. 1,000MΩ (at 500V DC) Measurement at same location as "Initial breakdown voltage" section.	
	Breakdown voltage (Initial)	Between open contacts	2,000 Vrms for 1min (Detection current: 10mA.)	
		Between contact sets	—	4,000 Vrms for 1min (Detection current: 10mA.)
		Between contact and coil	5,000 Vrms for 1min (Detection current: 10mA.)	
	Surge breakdown voltage*2 (between contact and coil)		Min. 10,000V (initial)	
	Temperature rise		DC: Max. 60°C (at 55°C) (By resistive method), AC: Max. 65°C (at 55°C) (By resistive method)	
	Operate time (at nominal voltage)		Max. 30ms (excluding contact bounce time)	
Mechanical characteristics	Release time (at nominal voltage)		DC: Max. 10ms (excluding contact bounce time, without diode), AC: Max. 30ms (excluding contact bounce time)	
	Shock resistance	Functional	Min. 98 m/s ² (Half-wave pulse of sine wave: 11 ms; detection time: 10μs.)	
		Destructive	Min. 980 m/s ² (Half-wave pulse of sine wave: 6 ms.)	
	Vibration resistance	Functional	10 to 55 Hz at double amplitude of 1 mm (Detection time: 10μs.)	
		Destructive	10 to 55 Hz at double amplitude of 1.5 mm	
Expected life	Mechanical		DC: Min. 10 ⁷ (at 180 times/min.), AC: Min. 5×10 ⁶ (at 180 times/min.)	
	Electrical (resistive load) (at 20 times/min.)		Min. 10 ⁵ (30A 277V AC) Min. 2×10 ⁵ (30A 250V AC)	Min. 10 ⁵ (25A 277V AC) Min. 2×10 ⁵ (20A 250V AC)
Conditions	Conditions for operation, transport and storage*3		Ambient temperature: -50°C to +55°C -58°F to +131°F Humidity: 5 to 85% R.H. (Not freezing and condensing at low temperature), Air pressure: 86 to 106kPa	
	Conditions for operation, transport and storage*3		20 times/min. (at max. rating)	
Unit weight			PC board type: approx. 80g 2.82oz, Plug-in type/TM type: approx. 90g 3.17oz, Screw terminal type: approx. 120g 4.23oz	

*1 This value can change due to the switching frequency, environmental conditions, and desired reliability level, therefore it is recommended to check this with the actual load.

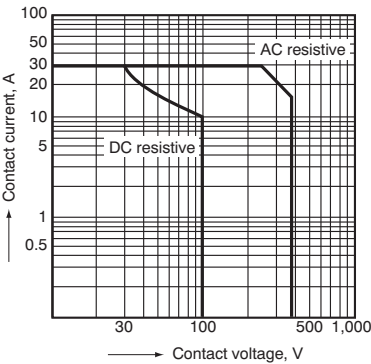
*2 Wave is standard shock voltage of ±1.2×50μs according to JEC-212-1981

*3 The upper limit of the ambient temperature is the maximum temperature that can satisfy the coil temperature rise value. Refer to "6. Usage, Storage and Transport Conditions" in [AMBIENT ENVIRONMENT](#) section in [Relay Technical Information](#).

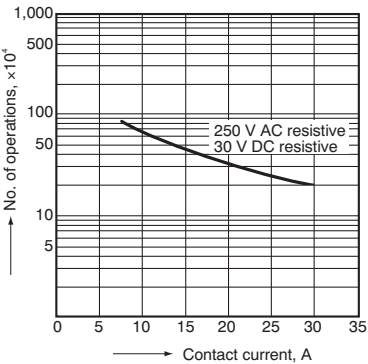
REFERENCE DATA

1 Form A Type

1. Maximum switching power

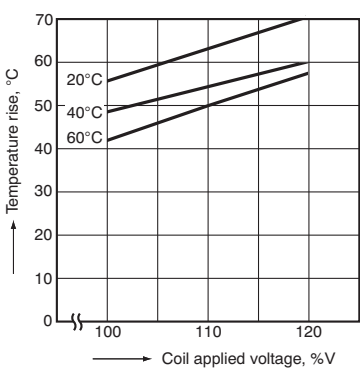


2. Life curve



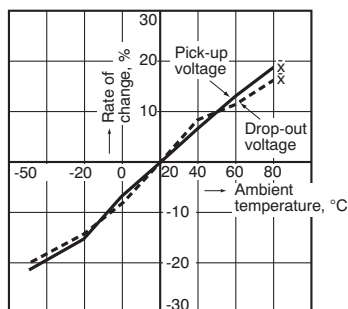
3. Coil temperature rise (DC type)

Measured portion: Inside the coil
Contact current: 30 A



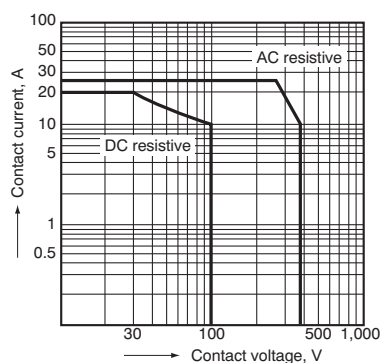
4. Ambient temperature characteristics

Tested sample: HE1aN-AC120V, 6 pcs.

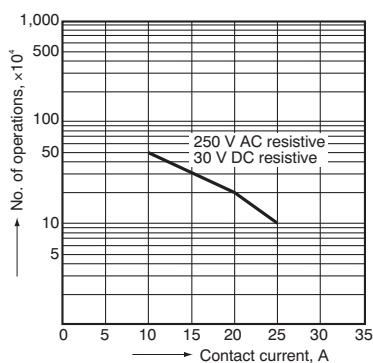


2 Form A Type

1. Maximum switching power

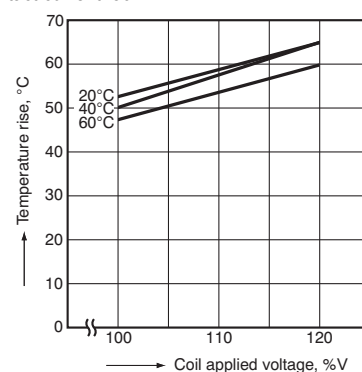


2. Life curve



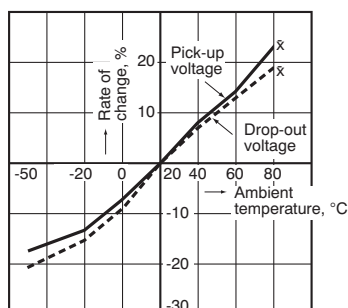
3. Coil temperature rise (DC type)

Measured portion: Inside the coil
Contact current: 30 A



4. Ambient temperature characteristics

Tested sample: HE2aN-AC120V, 6 pcs.



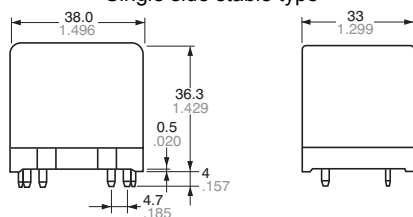
DIMENSIONS (mm inch)

Download [CAD Data](#) from our Web site.

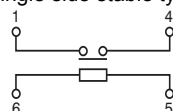
1. PC board type

1 Form A [CAD Data](#)

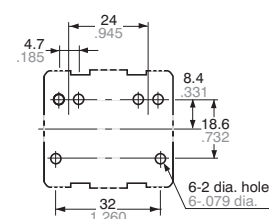
External dimensions
Single side stable type



Schematic (Bottom view)
Single side stable type



PC board pattern (Bottom view)

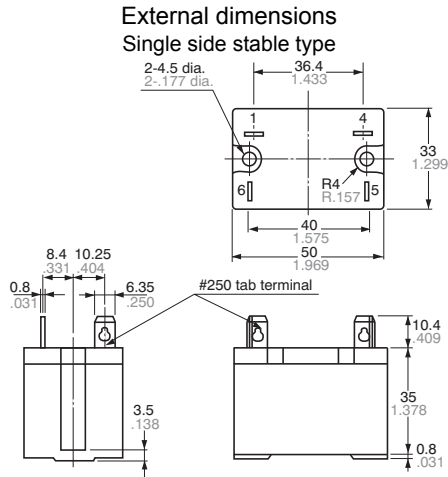


General tolerance: $\pm 0.3 \pm .012$

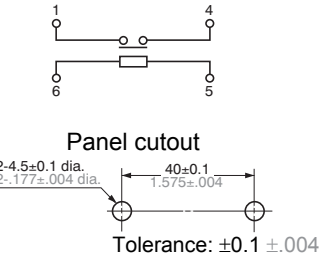
Tolerance: $\pm 0.1 \pm .004$

2. Plug-in type

1 Form A [CAD Data](#)

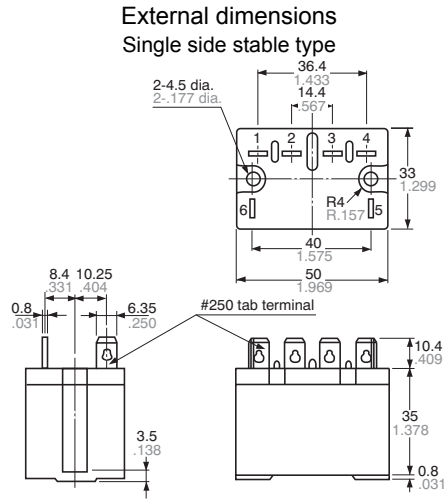


Schematic (Bottom view)
Single side stable type

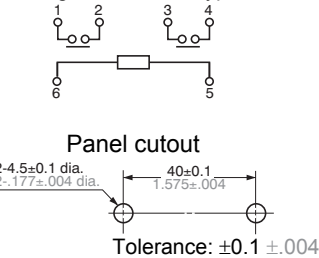


General tolerance: ±0.3 ±.012

2 Form A [CAD Data](#)



Schematic (Bottom view)
Single side stable type



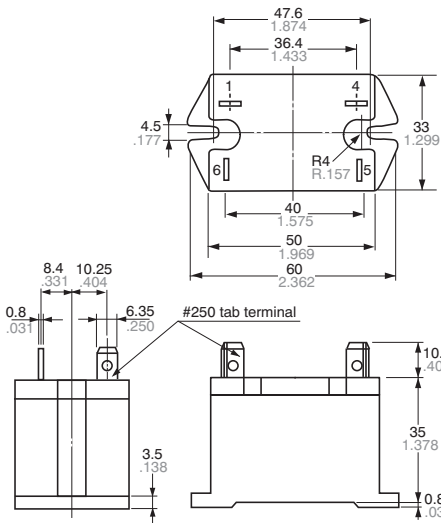
General tolerance: ±0.3 ±.012

3. TM type

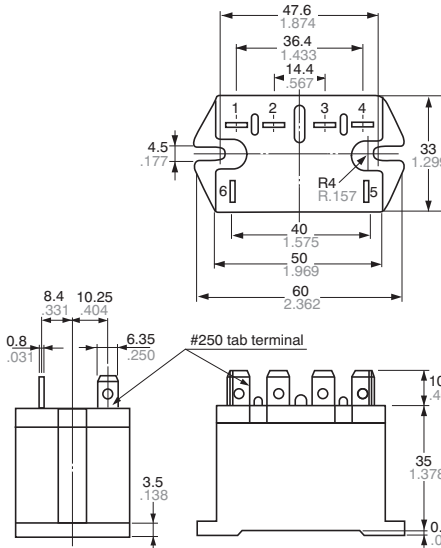
[CAD Data](#)

External dimensions
Single side stable type

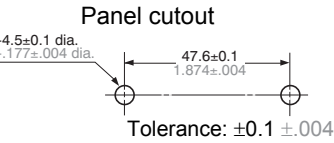
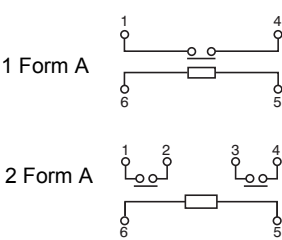
1 Form A



2 Form A



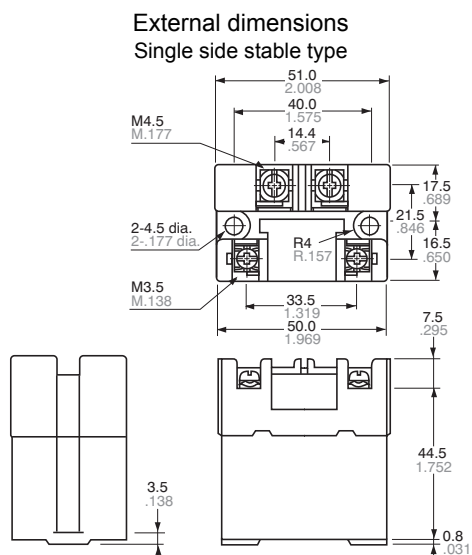
Schematic (Bottom view)
Single side stable type



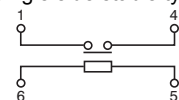
General tolerance: ±0.3 ±.012

4. Screw terminal type

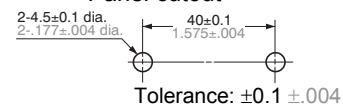
1 Form A [CAD Data](#)



Schematic (Bottom view)
Single side stable type



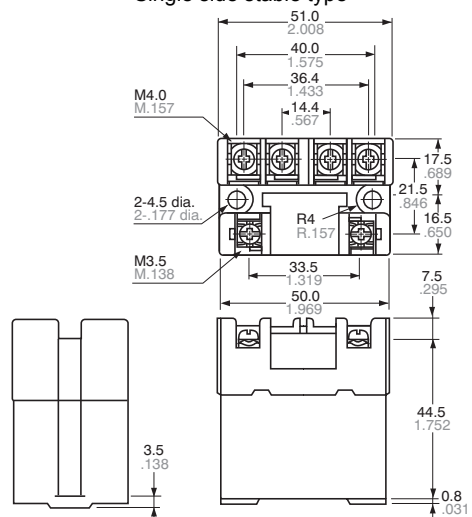
Panel cutout



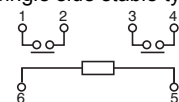
General tolerance: ±0.3 ±.012

2 Form A [CAD Data](#)

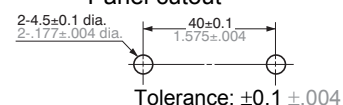
External dimensions
Single side stable type



Schematic (Bottom view)
Single side stable type



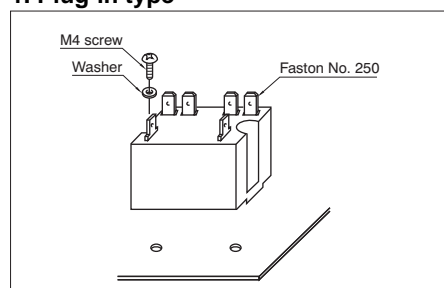
Panel cutout



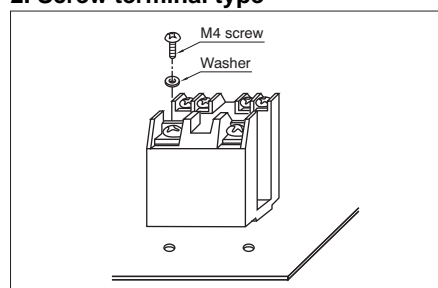
General tolerance: ±0.3 ±.012

MOUNTING METHOD

1. Plug-in type



2. Screw terminal type



3. Allowable installation wiring size for screw terminal types and terminal sockets

Due to the UP terminals, it is possible to either directly connect the wires or use crimped terminal.

SAFETY STANDARDS

Item	UL/C-UL (Recognized)		CSA (Certified)		VDE (Certified)		TV rating (UL/CSA)		TÜV (Certified)	
	File No.	Contact rating	File No.	Contact rating	File No.	Contact rating	File No.	Rating	File No.	Rating
1 Form A	E43028	30A 277V AC 30A 30V DC 1.5HP 125V AC 3HP 250V AC	LR26550 etc.	30A 277V AC 30A 30V DC 1.5HP 125V AC 3HP 250V AC	40006681	30A 250V AC (cosφ=1.0) 30A 250V AC (cosφ=0.4) 5A 110V DC (0ms)	UL E43028	TV-15	B 09 04 13461 261	30A 250V AC (cosφ=1.0) 30A 250V AC (cosφ=0.4) 8A 110V DC (0ms)
2 Form A	E43028	25A 277V AC 25A 30V DC 1HP 125V AC 2HP 250V AC	LR26550 etc.	25A 277V AC 25A 30V DC 1HP 125V AC 2HP 250V AC	40006681	25A 250V AC (cosφ=1.0) 25A 250V AC (cosφ=0.4) 5A 110V DC (0ms)	UL E43028	TV-10	B 09 04 13461 261	25A 250V AC (cosφ=1.0) 25A 250V AC (cosφ=0.4) 8A 110V DC (0ms)

NOTES

1. The dust cover should not be removed since doing so may alter the characteristics.

2. Avoid use under severe environmental conditions, such as high humidity, organic gas or in dust, oily locations and locations subjected to extremely frequent shock or vibrations.

3. When mounting, use spring washers. Optimum fastening torque ranges from 49 to 68.6 N·m (5 to 7 kgf·cm).
4. Firmly insert the receptacles so that there is no slack or looseness. To remove a receptacle, 19.6 to 39.2 N (2 to 4 kg) of pulling strength is required. Do not remove more than one receptacle at one time. Always remove one receptacle at a time and pull it straight outwards.

5. When using the AC type, the operate time due to the in-rush phase is 20 ms or more. Therefore, it is necessary for you to verify the characteristics for your actual circuit.
6. When using the push-on blocks for the screw terminal type, use crimped terminals and tighten the screw-down terminals to the torque below.

M4.5 screw:
147 to 166.6 N·cm (15 to 17 kgf·cm)

M4 screw:
117.6 to 137 N·cm (12 to 14 kgf·cm)

M3.5 screw:
78.4 to 98 N·cm (8 to 10 kgf·cm)

For Cautions for Use, see [Relay Technical Information](#).

Panasonic

**Ideal for solar inverter
compact size,
1a 48A power relays**

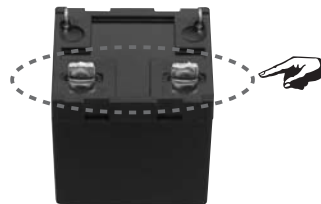
HE RELAYS PV Type



FEATURES

- **48A current at 250 V AC achieved in compact size (L: 33 × W: 38 × H: 36.3 mm L: 1.299 × W: 1.496 × H: 1.429 inch)**
Due to improved conduction efficiency, wide terminal blades are used. (for high capacity type)

- **High insulation and 10,000 V surge breakdown voltage (between contacts and coil) achieved.**
- **Conforms to various safety standards**
UL/C-UL and VDE



TYPICAL APPLICATIONS

- **Photovoltaic power generation systems (Solar inverter)**

- **Contact gap: 2.5 mm (VDE0126 compliant)**
Compliant with European photovoltaic standard VDE0126
Compliant with EN61810-1 2.5 kV surge breakdown voltage (between contacts)
- **Contributes to energy saving in devices thanks to reduced coil hold voltage**
Coil hold voltage can be reduced down to 40% of the nominal coil voltage (ambient temperature 20°C 68°F). This equals to operating power of approximately 310 mW.
*Coil hold voltage is the coil voltage after 100 ms following application of the nominal coil voltage.

ORDERING INFORMATION

HE 1a N - P - DC - -

Contact arrangement

1a: 1 Form A (Single side stable type)

Pick-up voltage

N: 70% of nominal voltage

Terminals

P: PC board terminal type

Coil voltage (DC)

6, 9, 12, 24V

Type, contact material and switching capacity

Y5: PV type, AgNi type (1 Form A 48A high capacity)

Note: Certified by UL/C-UL and VDE

HE

TYPES

Nominal coil voltage	High capacity type
	Part No.
6V DC	HE1aN-P-DC6V-Y5
9V DC	HE1aN-P-DC9V-Y5
12V DC	HE1aN-P-DC12V-Y5
24V DC	HE1aN-P-DC24V-Y5

Standard packing: Carton: 20 pcs.; Case: 100 pcs.

RATING

1. Coil data

Nominal coil voltage	Pick-up voltage (at 20°C 68°F) (Initial)	Drop-out voltage (at 20°C 68°F) (Initial)	Nominal operating current [±10%] (at 20°C 68°F)	Coil resistance [±10%] (at 20°C 68°F)	Nominal operating power	Max. applied voltage (at 20°C 68°F)
6V DC	70%V or less of nominal voltage	10%V or more of nominal voltage	320mA	18.8Ω	1,920mW	110%V of nominal voltage
9V DC			213mA	42.2Ω		
12V DC			160mA	75.0Ω		
24V DC			80mA	300.0Ω		

2. Specifications

Characteristics	Item		Specifications
			High capacity type
Contact	Arrangement		1 Form A
	Contact resistance (Initial)		Max. 100 mΩ (By voltage drop 6 V DC 1A)
	Contact material		AgNi type
Rating	Nominal switching capacity		48 A 250 V AC (Resistive load)
	Contact carrying power		12,000 VA (Resistive load)
	Max. switching voltage		250 V AC
	Max. switching current		48 A (AC)
	Nominal operating power		1,920 mW
	Min. switching capacity (Reference value)*1		100 mA 5 V DC
	Insulation resistance (Initial)		Min. 1,000MΩ (at 500V DC) Measurement at same location as "Breakdown voltage" section.
Electrical characteristics	Breakdown voltage (Initial)	Between open contacts	2,000 Vrms for 1 min. (Detection current: 10 mA)
		Between contact and coil	5,000 Vrms for 1 min. (Detection current: 10 mA)
	Surge breakdown voltage*2 (Between contact and coil) (Initial)		10,000 V
	Temperature rise		Max. 60°C 140°F (By resistive method, contact carrying current: 48A, 100%V of nominal coil voltage at 55°C 131°F.)
			Max. 30°C 86°F (By resistive method, contact carrying current: 48A, 60%V of nominal coil voltage at 85°C 185°F.)
	Coil hold voltage*3		40 to 100%V (Contact carrying current: 48A, at 20°C 68°F), 50 to 100%V (Contact carrying current: 48A, at 55°C 131°F), 50 to 60%V (Contact carrying current: 48A, at 85°C 185°F)
	Operate time (at 20°C 68°F)		Max. 30 ms (nominal coil voltage, excluding contact bounce time)
	Release time (at 20°C 68°F)*5		Max. 10 ms (nominal coil voltage, excluding contact bounce time) (without diode)
Mechanical characteristics	Shock resistance	Functional	Min. 98 m/s ² (Half-wave pulse of sine wave: 11 ms; detection time: 10 μs.)
		Destructive	Min. 980 m/s ² (Half-wave pulse of sine wave: 6 ms.)
	Vibration resistance	Functional	10 to 55 Hz at double amplitude of 1.0 mm (Detection time: 10 μs.)
		Destructive	10 to 55 Hz at double amplitude of 1.5 mm
Expected life	Mechanical		Min. 10 ⁶ (at 180 times/min.)
	Electrical	Resistive load	Min. 3×10 ⁴ (48 A 250 V AC) (ON : OFF = 1 s : 9s)
		Inductive load	Endurance: 48 A 250 V AC (cosφ = 0.8), Min. 3×10 ⁴ (ON : OFF = 0.1s : 10s) Overload: 72 A 250 V AC (cosφ = 0.8), Min. 50 (ON : OFF = 0.1s : 10s)
Conditions	Conditions for operation, transport and storage*4		Ambient temperature: –50 to +55°C –58 to +131°F (When nominal coil voltage applied) –50 to +85°C –58 to +185°F (When applied coil hold voltage is 50% to 60% of nominal coil voltage) Humidity: 5 to 85% R.H. (Not freezing and condensing at low temperature); Atmospheric pressure: 86 to 106 kPa
	Max. operating speed		6 times/min. (at nominal switching capacity ON : OFF = 1 s : 9s)
Unit weight			Approx. 80 g 2.82 oz

Notes: *1. This value can change due to the switching frequency, environmental conditions, and desired reliability level, therefore it is recommended to check this with the actual load.

*2. Wave is standard shock voltage of ±1.2×50μs according to JEC-212-1981

*3. Coil hold voltage is the coil voltage after 100 ms following application of the nominal coil voltage.

*4. The upper operation ambient temperature limit is the maximum temperature that can satisfy the coil temperature rise value. Refer to Usage, transport and storage conditions in NOTES (see page 12).

*5. Release time will lengthen if a diode, etc., is connected in parallel to the coil. Be sure to verify operation under actual conditions.

REFERENCE DATA

1. Coil temperature rise

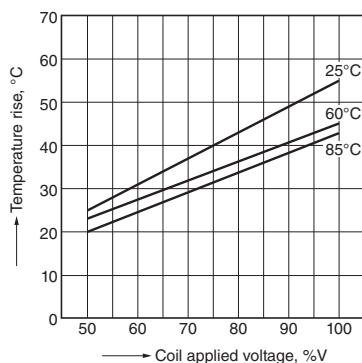
(High capacity type)

Sample: HE1aN-P-DC9V-Y5, 6 pcs.

Point measured: coil inside

Ambient temperature: 25°C 77°F, 60°C 140°F, 85°C 185°F

Contact carrying current: 48A



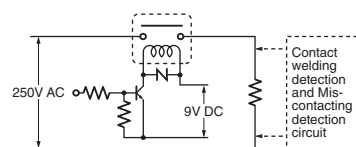
2. Electrical life test (High capacity type, Resistive load 250V AC, 48A at 85°C 185°F)

Sample: HE1aN-P-DC9V-Y5, 6 pcs.

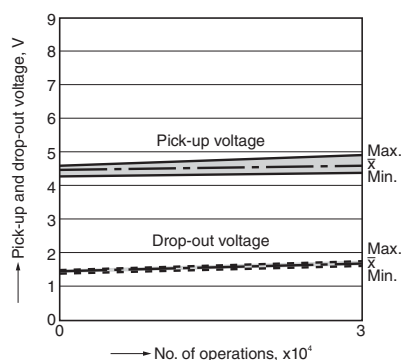
Operation frequency: 6 times/min.

(ON/OFF = 1.0s : 9.0s)

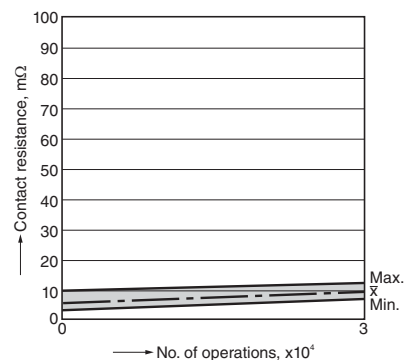
Circuit:



Change of pick-up and drop-out voltage



Change of contact resistance



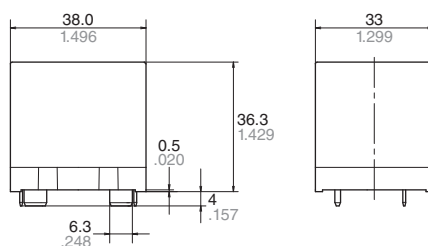
DIMENSIONS (mm inch)

Download [CAD Data](#) from our Web site.

High capacity type

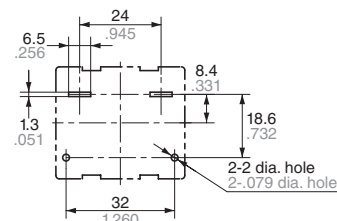


External dimensions



General tolerance: $\pm 0.3 \pm 0.012$

PC board pattern (Bottom view)



Tolerance: $\pm 0.1 \pm 0.004$

SAFETY STANDARDS

Certification authority		Contact rating
High capacity type	C-UL	48 A 277 V AC (at 85°C 185°F) *60A 277V AC (general use, at 60°C 140°F, 10k cycle), in use at 60% of rated coil voltage
	VDE (VDE0435)	48 A 250 V AC $\cos\phi = 0.8$ (at 85°C 185°F) *72A 250V AC ($\cos\phi = 0.8$ at 85°C 185°F, 50 cycle) *60A 250V AC ($\cos\phi = 0.8$ at 85°C 185°F, 10k cycle) *50A 20V DC (0ms, at 85°C 185°F, 30k cycle)

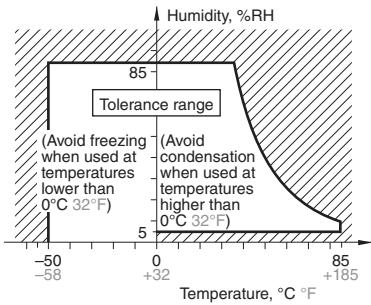
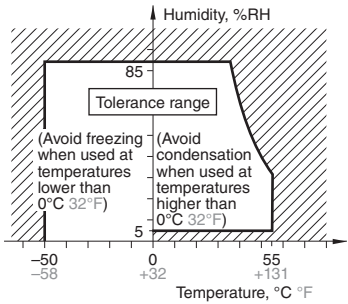
* Under development. Please contact us.

** Only 9V DC type is certified by VDE.

NOTES

■ Usage, transport and storage conditions

- 1) Temperature:
-50 to +55°C -58 to +131°F
-50 to +85°C -58 to +185°F (When applied coil hold voltage is 50% to 60% of nominal coil voltage)
- 2) Humidity: 5 to 85% RH
(Avoid freezing and condensation.)
The humidity range varies with the temperature. Use within the range indicated in the graph below.
- 3) Atmospheric pressure: 86 to 106 kPa
Temperature and humidity range for usage, transport, and storage



* -50 to +85°C -58 to +185°F (When applied coil hold voltage is 50% to 60% of nominal coil voltage)

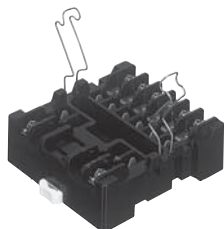
■ Certification

This relay is UL/C-UL certified.
48 A 277 V AC (High capacity type)
This relay is certified by VDE
48 A 250 V AC cosφ = 0.8
(High capacity type)

For Cautions for Use, see [Relay Technical Information](#).

ACCESSORIES (Terminal sockets)

HE RELAY TERMINAL SOCKET



FEATURES

1. Snap-in mounting to DIN rails is possible.

Can be inserted into 35 mm wide DIN rails. Removal is easy, too.

2. Sure and easy wiring

The use of UP terminals makes wiring exceptionally easy and sure.

3. Hold-down clips can be stored in main unit

Because the hold-down clips can be stored in the main unit, there is no need to remove them when, for example, wiring is changed.

TYPES

No. of poles	Types	Part No.
For 1 Form A	Single side stable type	JH1-SF
For 2 Form A	Single side stable type	JH2-SF

Standard packing: Carton: 10 pcs.; Case: 50 pcs.

SPECIFICATIONS

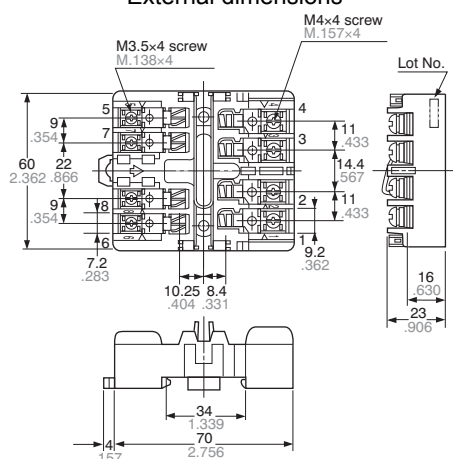
Item	Specifications	
Arrangement	1 Form A	2 Form A
Max. continuous current	30A 250V AC	20A 250V AC
Breakdown voltage (initial)	2,000 Vrms for 1min (between terminals) (Detection current: 10mA.)	
Insulation resistance	Min. 100MΩ (between poles)	
Heat resistance	150°C ±3°C for 1 hour	

Note: Do not insert or remove while powered on.

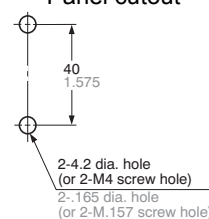
DIMENSIONS (Unit: mm inch)

1 Form A and 2 Form A types

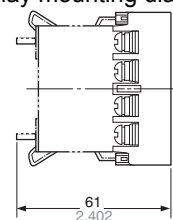
External dimensions



Panel cutout



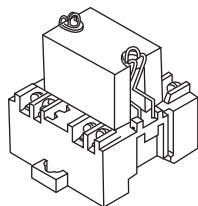
Relay mounting diagram



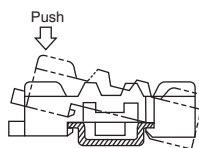
Note: The JH1-SF (1 Form A single side stable type) does not have receptacles (tooth rests) for numbers 2, 3, 7, and 8.
The JH2-SF (2 Form A single side stable type) does not have receptacles (tooth rests) for numbers 7 and 8.

MOUNTING METHOD

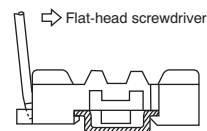
1. Relay mounting



2. Installing to a DIN rail



3. Removing from a DIN rail



NOTES

1. Be careful not to drop the relay. It is made of heat-hardened resin and may break.

2. Be sure to tighten the screw-down terminals firmly. Loose terminals may lead to the generation of heat.

3. When the 1 Form A is used in situations covered by the Japanese Electrical Appliance and Material Control Law, the use of 5.5 mm² cabling and 30 A current is not allowed. Consequently, the circuit should be less than 20 A.

4. When fixing the terminal socket with screws, to avoid torque damage and distortion, apply torque within the ranges shown below.

M3.5 screws:

0.784 to 0.98 N·m (8 to 10 kgf·cm)

M4 screws:

1.176 to 1.37 N·m (12 to 14 kgf·cm)