

**F082BPL**

○APPLICATION .....TV-IF FILTER  
 ○SYSTEM .....M/N  
 ○CARRIER FREQUENCY .....45.75 MHz

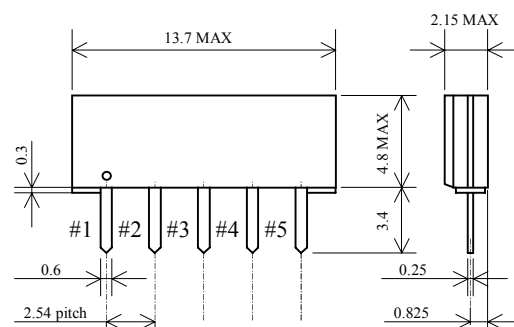
## ELECTRICAL CHARACTERISTICS

 $T_a = 25^\circ\text{C}$ 

| Parameters              | Conditions             | Min.  | Typical | Max.  | Unit   |
|-------------------------|------------------------|-------|---------|-------|--------|
| Insertion loss          | fp-1.75 (44.00 MHz)    | 24.0  | 25.5    | 27.0  | dB     |
| Relative level          | fp-6.0 (39.75 MHz)     | ---   | ---     | -35   | dB     |
|                         | fp-4.65 (41.10 MHz)    | -17.2 | -14.2   | -11.2 | dB     |
|                         | fp-4.5 (41.25 MHz)     | -15.2 | -13.2   | -11.2 | dB     |
|                         | fp-4.08 (41.67 MHz)    | - 9.2 | - 6.7   | - 4.2 | dB     |
|                         | fp-3.58 (42.17 MHz)    | - 1.8 | 0       | 1.8   | dB     |
|                         | fp-3.08 (42.67 MHz)    | 1.9   | 2.9     | 3.9   | dB     |
|                         | fp-1.75 (44.00 MHz)    | 3.8   | 4.8     | 5.8   | dB     |
|                         | fp-0.75 (45.00 MHz)    | 3.4   | 4.4     | 5.4   | dB     |
|                         | fp (45.75 MHz)         | ---   | 0(Ref.) | ---   | dB     |
|                         | fp+0.75 (46.50 MHz)    | -16.6 | -13.6   | -10.6 | dB     |
|                         | fp+1.5 (47.25 MHz)     | ---   | ---     | -37   | dB     |
|                         | 33.75 to 39.75 MHz     | ---   | ---     | -26   | dB     |
|                         | 47.25 to 53.75 MHz     | ---   | ---     | -26   | dB     |
| Amplitude ripple        | 42.17 to 45.75 MHz     | ---   | ---     | 1.0   | dB p-p |
| Group delay             | fp-4.0 (41.75 MHz)     | -170  | -120    | -70   | ns     |
|                         | fp-3.58 (42.17 MHz)    | -44   | -14     | 16    | ns     |
|                         | fp-3.0 (42.75 MHz)     | -33   | - 3     | 27    | ns     |
|                         | fp-2.0 (43.75 MHz)     | -34   | - 4     | 26    | ns     |
|                         | fp-1.0 (44.75 MHz)     | -30   | 0       | 30    | ns     |
|                         | fp (45.75 MHz)         | ---   | 0(Ref.) | ---   | ns     |
|                         | fp+0.5 (46.25 MHz)     | -27   | 13      | 53    | ns     |
| Group delay ripple      | 42.17 to 45.75 MHz     | ---   | ---     | 60    | ns p-p |
| Capacitance             | C <sub>i</sub> (1 MHz) | ---   | 16.7    | ---   | pF     |
|                         | C <sub>o</sub> (1 MHz) | ---   | 10.6    | ---   | pF     |
| Temperature coefficient |                        | ---   | -18     | ---   | ppm/°C |

## PACKAGE DIMENSION

Unit : mm



## PIN CONNECTIONS

Pin No.

#1.INPUT

#2.INPUT(GROUND)

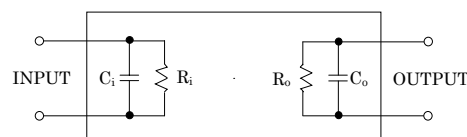
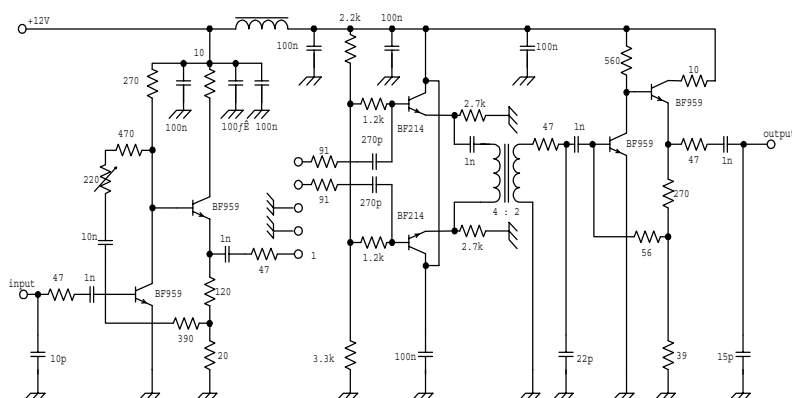
#3.GROUND

#### #4.OUTPUT

## #5.OUTPUT

### EQUIVALENT CIRCUIT

## MEASUREMENT CIRCUIT



- \* The information contained herein is presented only as a guide for the applications of our products. No responsibility is assumed by Fujitsu Media Devices for any infringements of patents or other rights of the third parties which may result from its use. No license is granted by implication or otherwise under any patent or patent rights of Fujitsu Media Devices or others.
- \* The information contained herein may be changed without prior notice. It is therefore advisable to contact Fujitsu Media Devices before proceeding with the design of equipment incorporating this product.

No. F082BPL

2002-04-01

## FREQUENCY CHARACTERISTICS

