

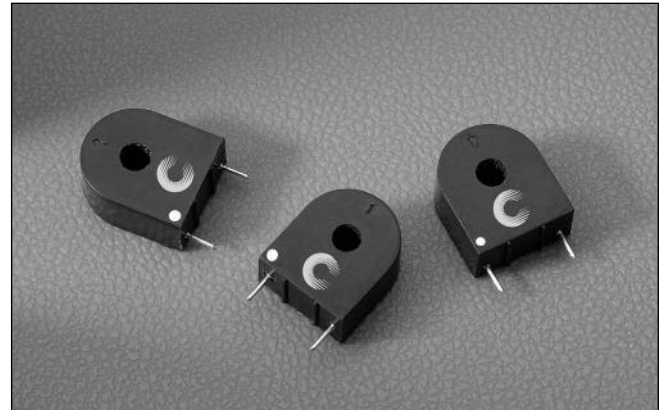
## Description

- Encapsulated Through Hole Design
- Isolation between Pri and Sec of 3750 Volts
- Materials meet UL Class B



## Applications

- Feedback elements linking the output and pulse control circuitry
- Switch Mode Power Supplies: PFC, Half-bridge, Full-bridge, Forward
- Off-Line
- Telecom



Part Number	Inductance (mH)	Turns +/-1%	Current Range AMPS	DCR ( $\Omega$ ) +/-15% @ 20°C	Recommended Terminating Resistor	Frequency Range
CS-1050-R	5.6	50	1-10	0.60	50 ohms	20k-200kHz
CS-1100-R	22.4	100	2-20	1.3	100 ohms	20k-200kHz
CS-1200-R	89.7	200	4-40	3.3	200 ohms	20k-100kHz

1) Test Parameters: 10kHz, 0.25 Vrms

2) Dimensions in Millimeters

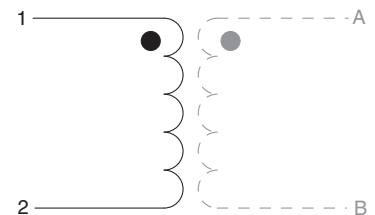
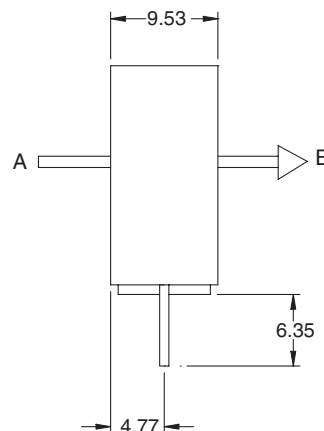
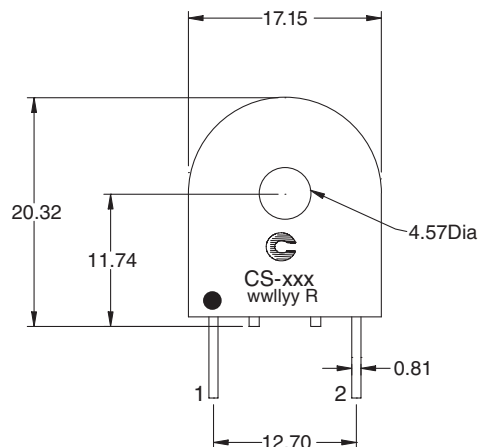
3) Output Voltage is 1v/A with the terminating resistor and is linear over the specified range

4) Hipot is 3750 Volts from winding to test wire A-B

5) Materials meet UL Class B

6) Polarity Indicator Dot: (This lead is in phase with lead A of conductor A-B)

## Mechanical Diagrams



xxx = Inductance value  
wwilly = Date code R = Revision level