

DO NOT
SCALE FROM
THIS PRINT

TABLE 1	
PART NUMBER	"B"
SCRUS-17-X-XX-XX-AMS-AM	30[1.18]
SCRUS-17-X-XX-XX-BMS-BM	30[1.18]
SCRUS-17-X-XX-XX-AMS-BC	15[.59]
SCRUS-17-X-XX-XX-BMS-BC	15[.59]
SCRUS-17-X-XX-XX-BMS-AM	30[1.18]
SCRUS-17-X-XX-XX-AMS-BM	30[1.18]
SCRUS-17-X-XX-XX-BMS-MB	23.5[.925]
SCRUS-17-X-XX-XX-AMS-MB	23.5[.925]

DESIGNED & DIMENSIONED
IN MILLIMETERS[INCHES]

**THIS PRODUCT MANUFACTURED
WITH LEAD-FREE PROCESSING**

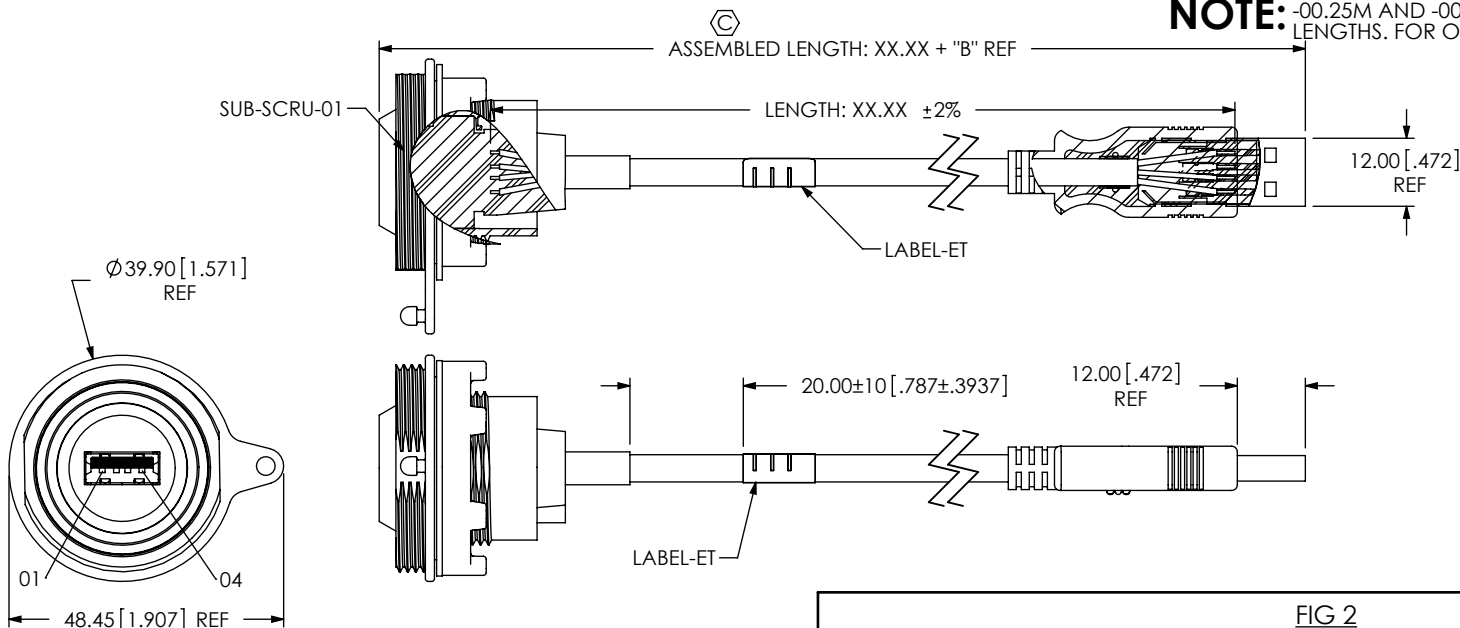
SCRUS-17-X-XX-XX-XXX-XX

PLATING
-G: .000030" GOLD ON
CONTACT AREAS, NICKEL
ON SHELLS

LENGTH
-XX.XX LENGTH IN METERS
(00.25[9.84] MIN - 50.00[1968.50] MAX)
(SEE NOTE 15)

END OPTION 2
-AM: USB A TYPE PLUG,
UNSEALED
-BM: USB B TYPE PLUG,
UNSEALED
-BC: BLUNT CUT
-MB: MINI USB B TYPE PLUG,
UNSEALED
END OPTION 1
-AMS: USB A TYPE JACK,
SEALED
-BMS: USB B TYPE JACK,
SEALED

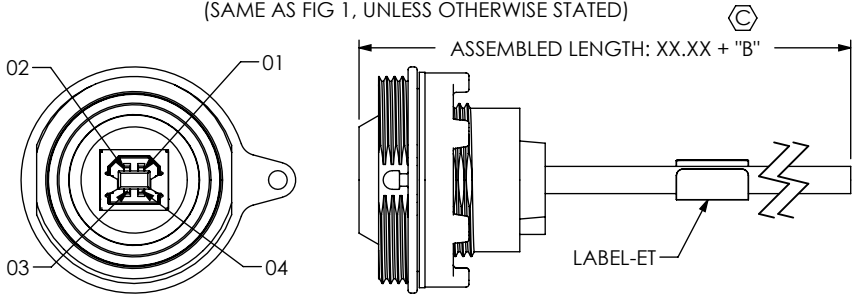
FIG 1
SCRUS-17-X- 00.25-AMS-AM SHOWN



NOTE: -00.25M AND -00.50M ARE CATALOG STANDARD LENGTHS. FOR OTHER LENGTHS CONTACT SAMTEC.

- NOTES:
1. REPRESENTS A CRITICAL DIMENSION.
 2. ASSEMBLY TO BE 100% TESTED FOR OPENS AND SHORTS, HI-POT TEST AT 200V BEFORE PREMOLD IN-PROCESS AND ON FINISHED ASSEMBLY. AFTER FINAL ELECTRICAL TEST, LABEL EACH ASSEMBLY WITH 1 LABEL-ET.
 3. NOTE DELETED.
 4. USB LOGO TO BE RAISED 0.25[.010].
 5. PANEL THICKNESS: 0.76[.030] - 5.2[.205].
 6. ASSEMBLY TO BE SHIPPED IN BULK PACKAGING
 7. TORQUE SPECIFICATION FOR NUT ON SUB-SCRU-01 IS 12 IN-LB.
 8. NOTE DELETED.
 9. ALL IDENTIFICATION MARKS MUST NOT STAND GREATER THAN 0.051 [.002] OFF THE SURFACE OF THE PART.
 10. MOLD TO BE INSERTED TO ACCEPT DIFFERENT CABLE DIAMETERS.
 11. ALL EJECTOR PIN AND GATE LOCATIONS MUST BE APPROVED BY SAMTEC PRODUCT ENGINEERING.
 12. ANY ADDITIONAL VOIDING AND/OR MODIFICATIONS TO VOIDING MUST BE APPROVED BY SAMTEC PRODUCT ENGINEERING.
 13. THIS IS A COMPONENT OF USBP-A-01-G-B-01 (CALLED OUT ON THE BOM), BUT LABELED INDIVIDUALLY FOR ASSEMBLY PURPOSES.
 14. THIS IS A COMPONENT OF USBP-B-01-G-B-01 (CALLED OUT ON THE BOM), BUT LABELED INDIVIDUALLY FOR ASSEMBLY PURPOSES.
 15. LENGTHS GREATER THAN 01.00M ARE NOT SUPPORTED BY USB 2.0 TEST DATA.
 16. NOTE DELETED.

FIG 2
SCRUS-17-X-00.25-BMS-BC SHOWN
(SAME AS FIG 1, UNLESS OTHERWISE STATED)



UNLESS OTHERWISE SPECIFIED,
DIMENSIONS ARE IN MILLIMETERS.
TOLERANCES ARE:
DECIMALS ANGLES
X.X: ±0.35 [.013]
X.XX: ±0.25 [.010]
X.XXX: ±0.15 [.006]

PROPRIETARY NOTE
THIS DOCUMENT CONTAINS INFORMATION
CONFIDENTIAL AND PROPRIETARY TO
SAMTEC, INC. AND SHALL NOT BE REPRODUCED
OR TRANSFERRED TO OTHER DOCUMENTS OR
DISCLOSED TO OTHERS OR USED FOR ANY
PURPOSE OTHER THAN THAT WHICH IT WAS
OBTAINED WITHOUT THE EXPRESSED WRITTEN
CONSENT OF SAMTEC, INC.

MATERIAL: DO NOT SCALE DRAWING SHEET SCALE: 3:4
INSULATOR: GLASS FILLED THERMOPLASTIC
CONTACTS: COPPER ALLOY
SHIELDS: CRS
CABLE NUT: PA66
SEALED PREMOLD: TPE(RF 640A), SHOT WEIGHT: 10.66g [.024lb]
SEALED OVERMOLD: PA66 GF13 FR(70G13L), MAX REGRIND: 10%, SHOT WEIGHT: 12.70g [.028lb]
NON-SEALED OVERMOLD: PVC, MAX REGRIND: 30%, SHOT WEIGHT: 9.07g [.020lb]

samtec

520 PARK EAST BLVD, NEW ALBANY, IN 47150
PHONE: 812-944-6733 FAX: 812-948-5047
e-Mail: info@SAMTEC.com code 55322

DESCRIPTION:
PANEL MOUNT SEALED USB CABLE
DWG. NO.
SCRUS-17-X-XX-XX-XXX-XX

BY: LENNY K 09-01-2010 SHEET 1 OF 15

FIG 3
SCRUS-17-X-00.25-BMS-BM SHOWN
(SAME AS FIG 1, UNLESS OTHERWISE STATED)

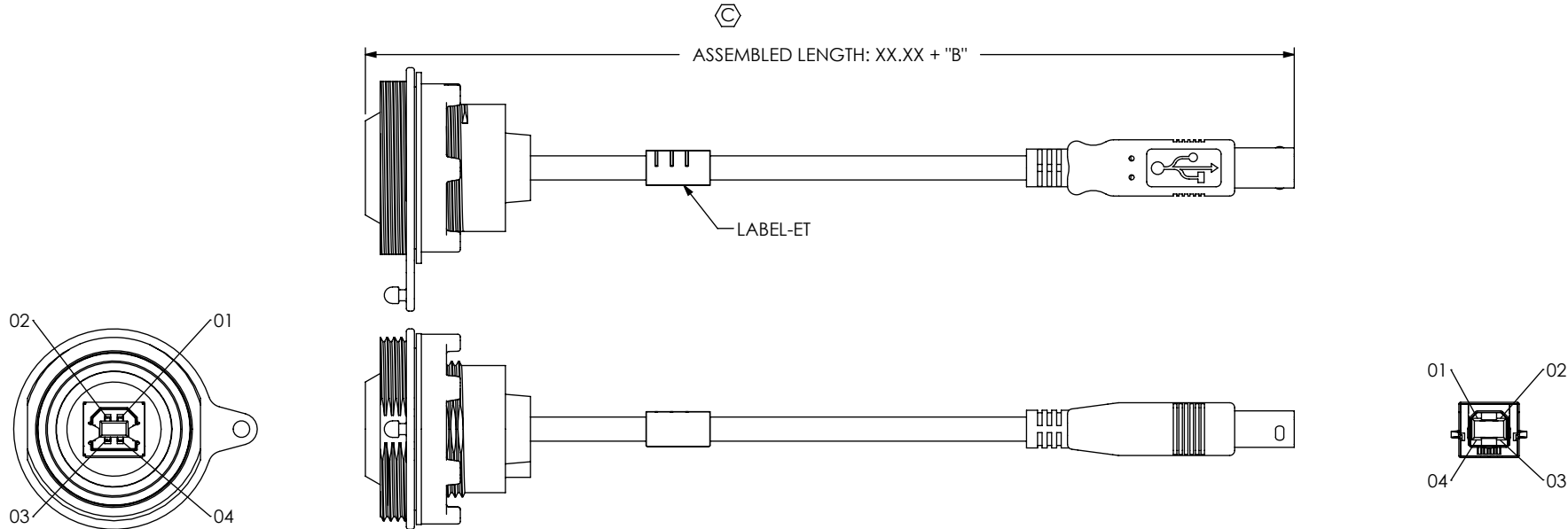


FIG 4
SCRUS-17-X-00.25-AMS-BC SHOWN
(SAME AS FIG 1, UNLESS OTHERWISE STATED)

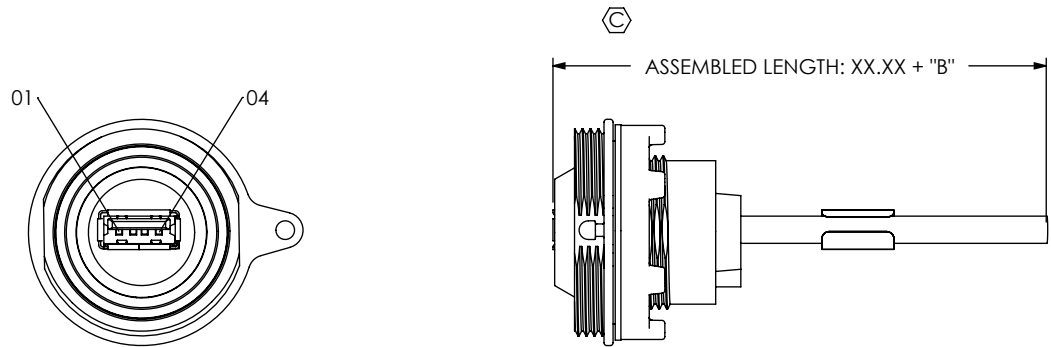


TABLE 2: PIN-OUT

J1 End		Wire Color	J2 End			
-AMS	-BMS		-AM	-BM	-BC	-MB
01	01	RED	01	01	01	01
02	02	WHITE	02	02	02	02
03	03	GREEN	03	03	03	03
n/a	n/a	NOT CONNECTED	n/a	n/a	n/a	04
04	04	BLACK	04	04	04	05
USB Shield	USB Shield	DRAIN/CABLE SHIELD	USB Shield	USB Shield	USB Shield	USB Shield

PROPRIETARY NOTE
THIS DOCUMENT CONTAINS INFORMATION
CONFIDENTIAL AND PROPRIETARY TO
SAMTEC, INC. AND SHALL NOT BE REPRODUCED
OR TRANSFERRED TO OTHER DOCUMENTS OR
DISCLOSED TO OTHERS OR USED FOR ANY
PURPOSE OTHER THAN THAT WHICH IT WAS
OBTAINED WITHOUT THE EXPRESSED WRITTEN
CONSENT OF SAMTEC, INC.

DO NOT SCALE DRAWING

SHEET SCALE: 1:2

520 PARK EAST BLVD, NEW ALBANY, IN 47150
PHONE: 812-944-6733 FAX: 812-948-5047
e-Mail info@SAMTEC.com code 55322

DESCRIPTION:
PANEL MOUNT SEALED USB CABLE

DWG. NO.
SCRUS-17-X-XX.XX-XXX-XX

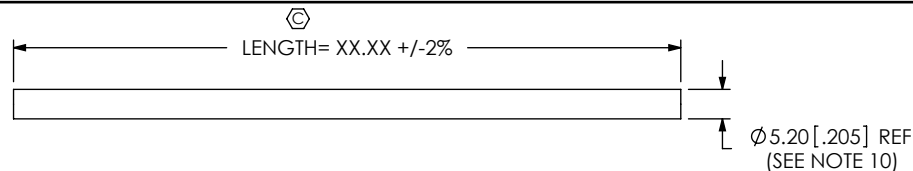
BY: LENNY K

09-01-2010

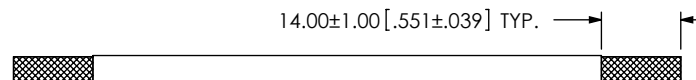
SHEET 2 OF 15

F:\DWG\MISC\MKTG\SCRUS-17-X-XX.XX-XXX-XX-MKT.SLDDRW

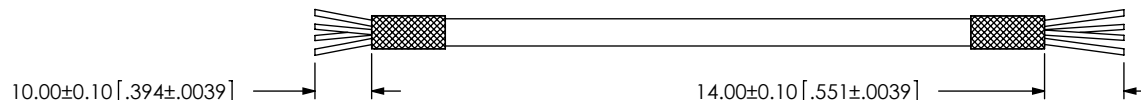
REVISION Y



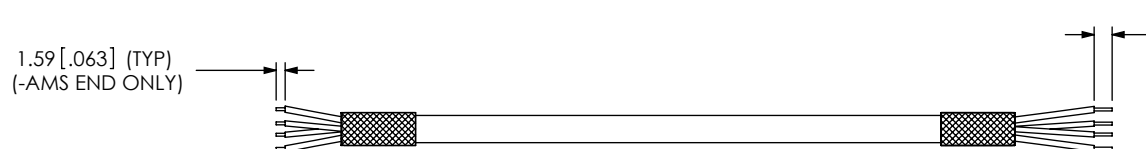
-AMS-AM: END OPTION
IN-PROCESS 1
UCA-03-01
CUT CABLES TO LENGTH



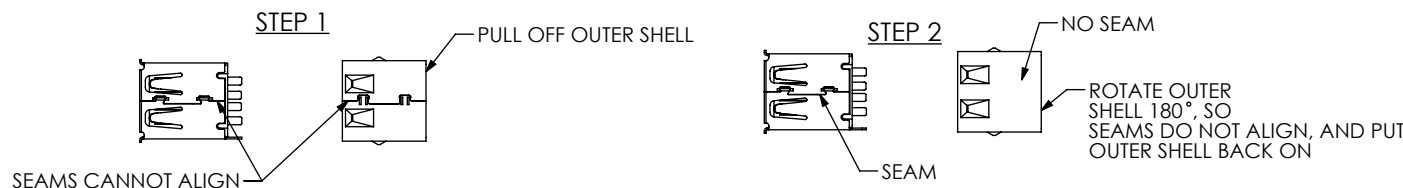
-AMS-AM: END OPTION
IN-PROCESS 2
UCA-03-01
STRIP OUTER JACKET TO DIMENSION SHOWN



-AMS-AM: END OPTION
IN-PROCESS 3
FOLD BACK SHIELD & TRIM WIRES TO LENGTH

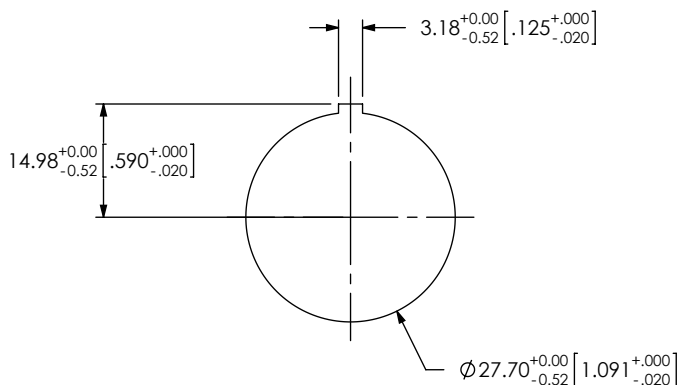


-AMS-AM: END OPTION
IN-PROCESS 4
STRIP INDIVIDUAL CABLES TO DIMENSION SHOWN

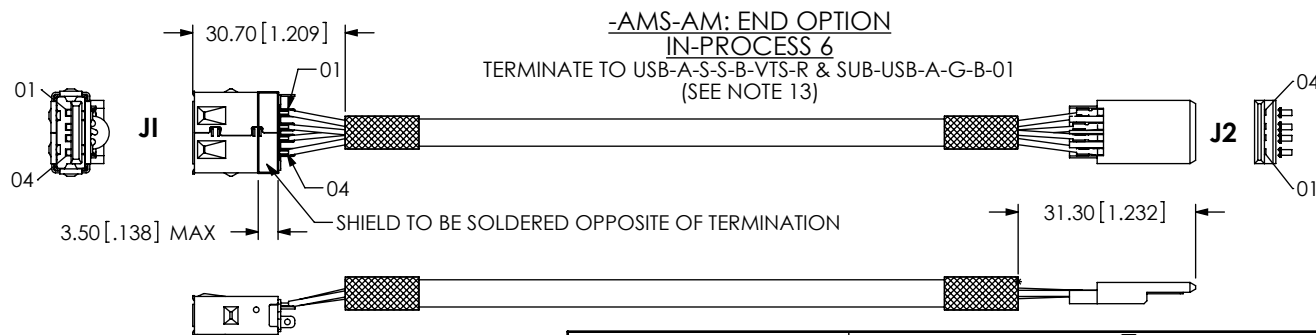


-AMS-AM: END OPTION
IN-PROCESS 5
MODIFY USB-A-S-S-B-VTS-R

RECOMMENDED PANEL HOLE
(SEE NOTE 5)



F:\DWG\MISC\MKTG\SCRUS-17-X-XX-XX-XXX-XX-MKT.SLDDRW



PROPRIETARY NOTE

THIS DOCUMENT CONTAINS INFORMATION CONFIDENTIAL AND PROPRIETARY TO SAMTEC, INC. AND SHALL NOT BE REPRODUCED OR TRANSFERRED TO OTHER DOCUMENTS OR DISCLOSED TO OTHERS OR USED FOR ANY PURPOSE OTHER THAN THAT WHICH IT WAS OBTAINED WITHOUT THE EXPRESSED WRITTEN CONSENT OF SAMTEC, INC.

DO NOT SCALE DRAWING

SHEET SCALE: 0.75:1

samtec

520 PARK EAST BLVD, NEW ALBANY, IN 47150
PHONE: 812-944-6733 FAX: 812-948-5047
e-Mail: info@SAMTEC.com code 55322

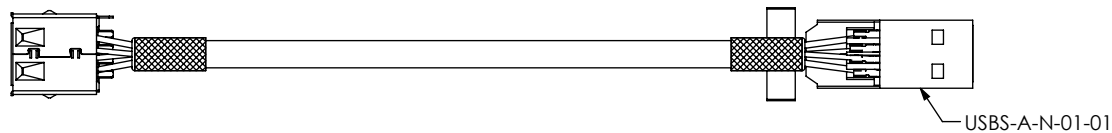
DESCRIPTION:
PANEL MOUNT SEALED USB CABLE

DWG. NO.
SCRUS-17-X-XX-XXX-XX

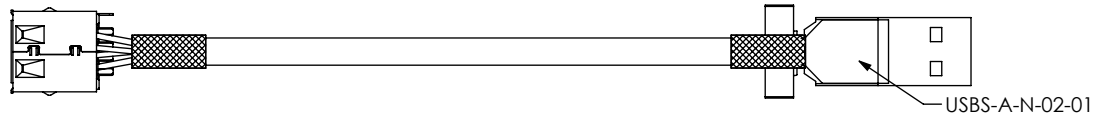
BY: LENNY K 09-01-2010 SHEET 3 OF 15

REVISION Y

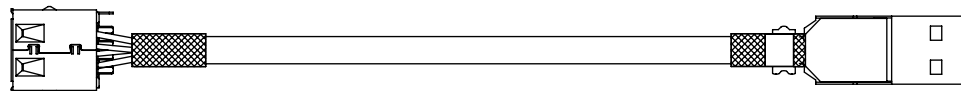
-AMS-AM: END OPTION
IN-PROCESS 7
ADD USBS-A-N-01-01 (SEE NOTE 13)



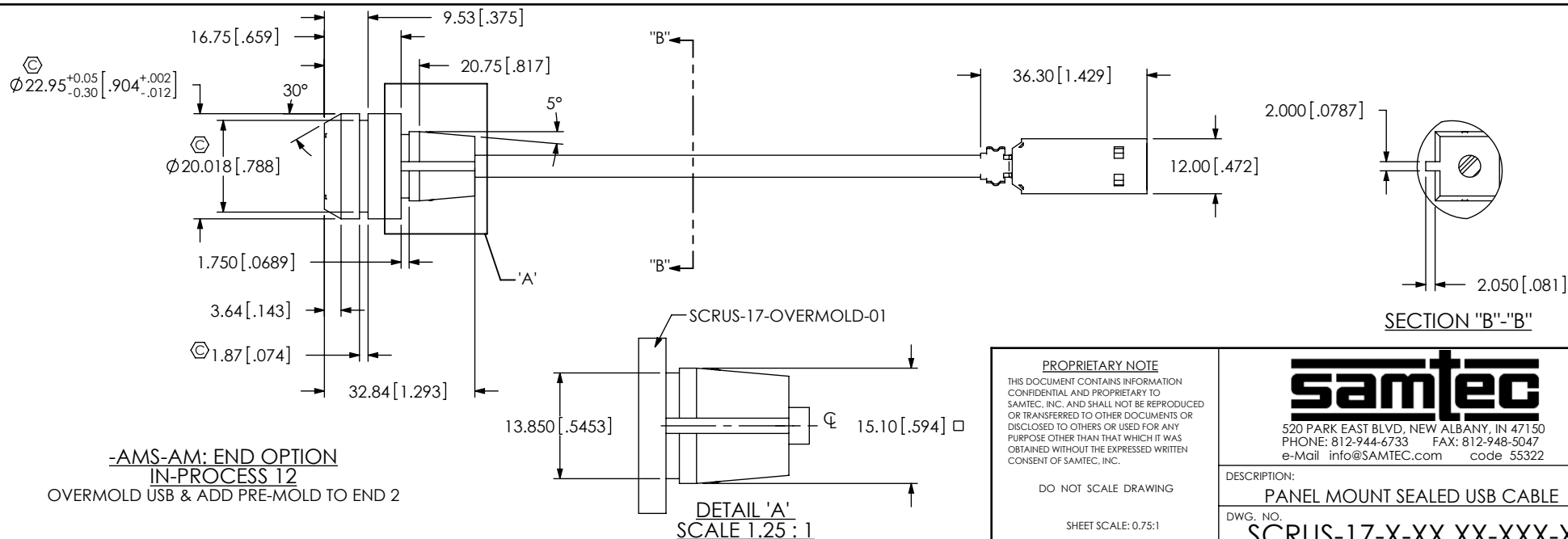
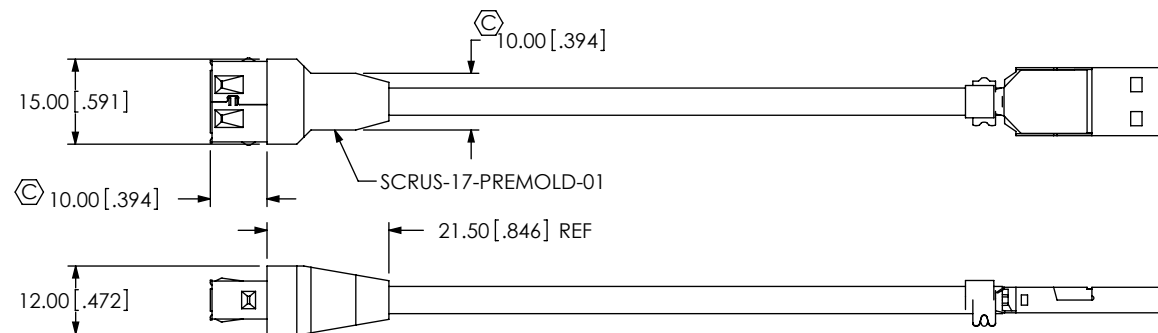
-AMS-AM: END OPTION
IN-PROCESS 8
ADD USBS-A-N-02-01 (SEE NOTE 13)



-AMS-AM: END OPTION
IN-PROCESS 9 & 10
CRIMP SHELLS OVERBAND
TRIM SHIELD TAB ON USB-A-S-B-VTS-R



-AMS-AM: END OPTION
IN-PROCESS 11
PREMOLD



-AMS-AM: END OPTION
IN-PROCESS 12
OVERMOLD USB & ADD PRE-MOLD TO END 2

PROPRIETARY NOTE
THIS DOCUMENT CONTAINS INFORMATION
CONFIDENTIAL AND PROPRIETARY TO
SAMTEC, INC. AND SHALL NOT BE REPRODUCED
OR TRANSFERRED TO OTHER DOCUMENTS OR
DISCLOSED TO OTHERS OR USED FOR ANY
PURPOSE OTHER THAN THAT WHICH IT WAS
OBTAINED WITHOUT THE EXPRESSED WRITTEN
CONSENT OF SAMTEC, INC.

DO NOT SCALE DRAWING

SHEET SCALE: 0.75:1

samtec

520 PARK EAST BLVD, NEW ALBANY, IN 47150
PHONE: 812-944-6733 FAX: 812-948-5047
e-Mail: info@SAMTEC.com code 55322

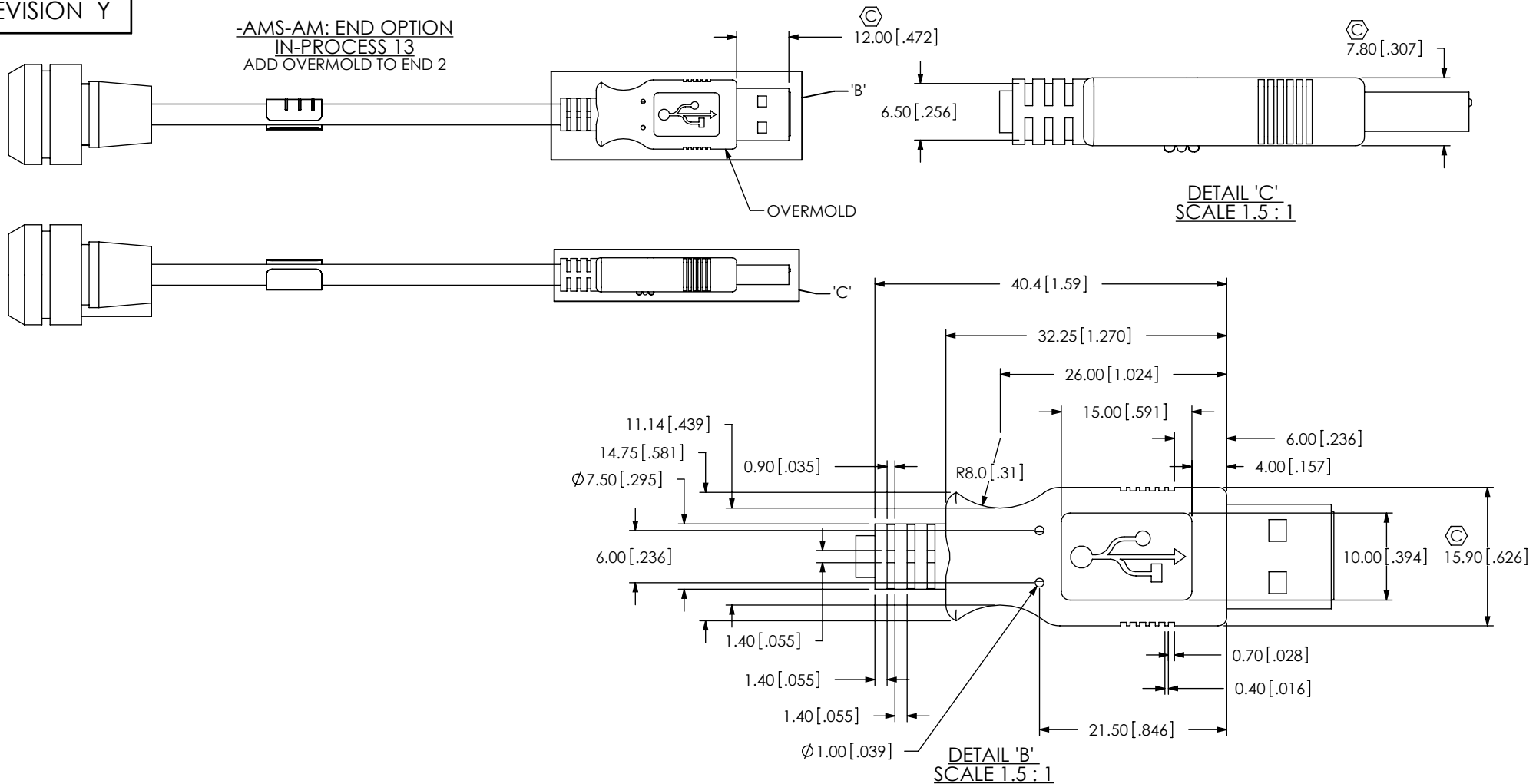
DESCRIPTION:
PANEL MOUNT SEALED USB CABLE

DWG. NO.
SCRUS-17-X-XX.XX-XXX-XX

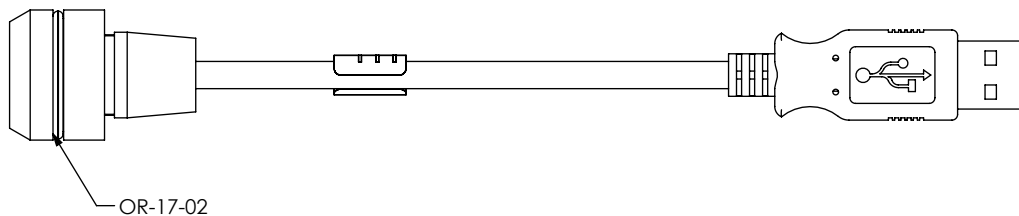
BY: LENNY K 09-01-2010 SHEET 4 OF 15

REVISION Y

-AMS-AM: END OPTION
IN-PROCESS 13
ADD OVERMOLD TO END 2



-AMS-AM: END OPTION
N-PROCESS 14
ADD OR-17-02



PROPRIETARY NOTE

THIS DOCUMENT CONTAINS INFORMATION
CONFIDENTIAL AND PROPRIETARY TO
SAMTEC, INC. AND SHALL NOT BE REPRODUCED
OR TRANSFERRED TO OTHER DOCUMENTS OR
DISCLOSED TO OTHERS OR USED FOR ANY
PURPOSE OTHER THAN THAT WHICH IT WAS
OBTAINED WITHOUT THE EXPRESSED WRITTEN
CONSENT OF SAMTEC, INC.

DO NOT SCALE DRAWING

SHEET SCALE: 0.75:1

samtec

520 PARK EAST BLVD. NEW ALBANY, IN 47150
PHONE: 812-944-6733 FAX: 812-948-5047
e-Mail: info@SAMTEC.com code 55322

DESCRIPTION:

PANEL MOUNT SEALED USB CABLE

DWG. NO.

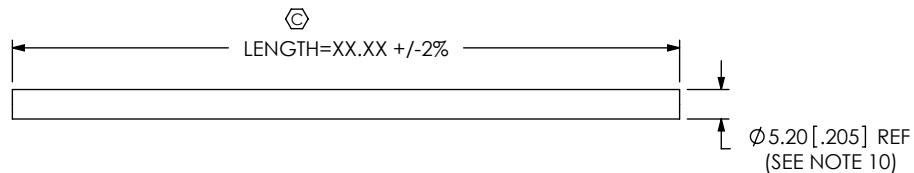
SCRUS-17-X-XX.XX-XXX-XX

BY: LENNY K

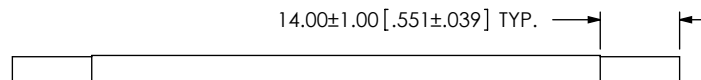
09-01-2010

SHEET 5 OF 15

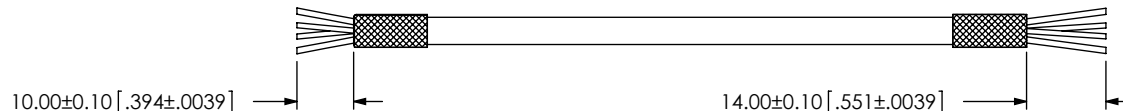
-BMS-BM: END OPTION
IN-PROCESS 1
UCA-03-01
CUT CABLES TO LENGTH



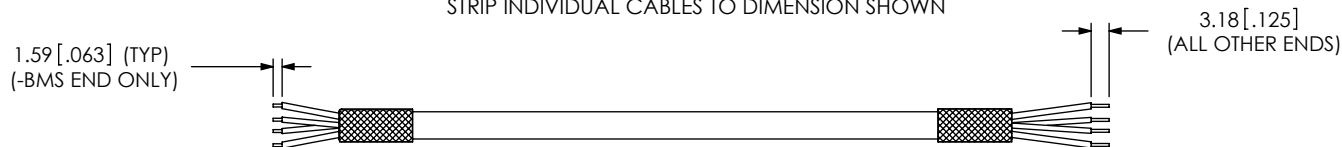
-BMS-BM: END OPTION
IN-PROCESS 2
UCA-03-01
STRIP OUTER JACKET TO DIMENSION SHOWN



-BMS-BM: END OPTION
IN-PROCESS 3
FOLD BACK SHIELD & TRIM WIRES TO LENGTH

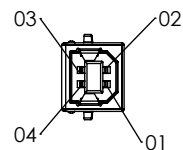


-BMS-BM: END OPTION
IN-PROCESS 4
STRIP INDIVIDUAL CABLES TO DIMENSION SHOWN



<p>PROPRIETARY NOTE THIS DOCUMENT CONTAINS INFORMATION CONFIDENTIAL AND PROPRIETARY TO SAMTEC, INC. AND SHALL NOT BE REPRODUCED OR TRANSFERRED TO OTHER DOCUMENTS OR DISCLOSED TO OTHERS OR USED FOR ANY PURPOSE OTHER THAN THAT WHICH IT WAS OBTAINED WITHOUT THE EXPRESSED WRITTEN CONSENT OF SAMTEC, INC.</p> <p>DO NOT SCALE DRAWING</p> <p>SHEET SCALE: 0.75:1</p>		<p>samtec 520 PARK EAST BLVD, NEW ALBANY, IN 47150 PHONE: 812-944-6733 FAX: 812-948-5047 e-Mail info@SAMTEC.com code 55322</p>
<p>DESCRIPTION: PANEL MOUNT SEALED USB CABLE</p> <p>DWG. NO. SCRUS-17-X-XX.XX-XXX-XX</p>		
<p>BY: LENNY K 09-01-2010</p>		<p>SHEET 6 OF 15</p>

REVISION Y



3.50 [.138] MAX

J1

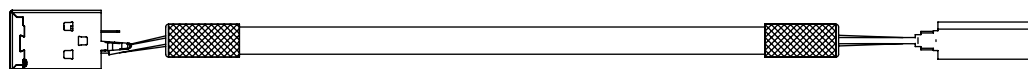
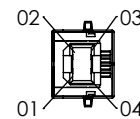
USB-B-S-S-B-VT-R

TERMINATE TO USB-B-S-S-B-VT-R & SUB-USB-B-G-B-01 (SEE NOTE 14)
(SEE TABLE 3 FOR PINOUT)

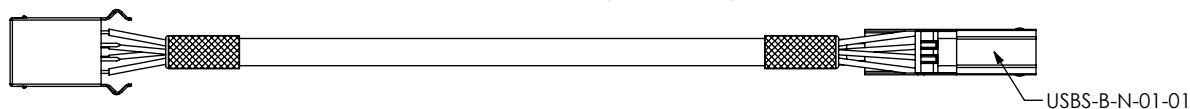
SHIELD TO BE SOLDERED
ON OPPOSITE SIDE IN THIS AREA.

SUB-USB-B-G-B-01
(SEE NOTE 14)

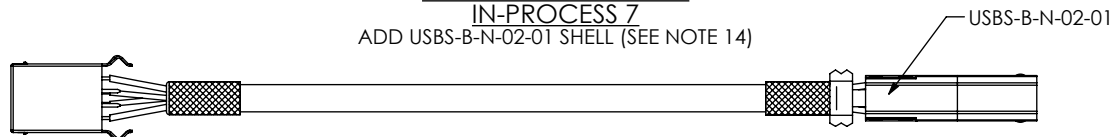
J2



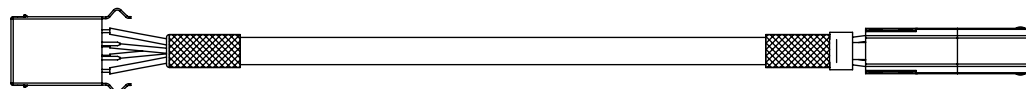
-BMS-BM END OPTION
IN-PROCESS 6
ADD USBS-B-N-01-01 SHELL (SEE NOTE 14)



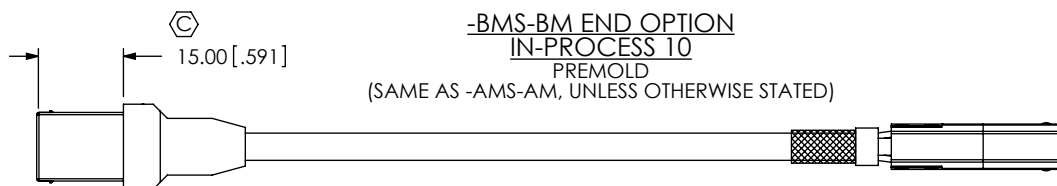
-BMS-BM END OPTION
IN-PROCESS 7
ADD USBS-B-N-02-01 SHELL (SEE NOTE 14)



-BMS-BM END OPTION
IN-PROCESS 8 & 9
CRIMP SHELL OVER BRAID
TRIM TAB ON USB-B-S-S-B-VT-R



-BMS-BM END OPTION
IN-PROCESS 10
PREMOLD
(SAME AS -AMS-AM, UNLESS OTHERWISE STATED)



PROPRIETARY NOTE

THIS DOCUMENT CONTAINS INFORMATION
CONFIDENTIAL AND PROPRIETARY TO
SAMTEC, INC. AND SHALL NOT BE REPRODUCED
OR TRANSFERRED TO OTHER DOCUMENTS OR
DISCLOSED TO OTHERS OR USED FOR ANY
PURPOSE OTHER THAN THAT WHICH IT WAS
OBTAINED WITHOUT THE EXPRESSED WRITTEN
CONSENT OF SAMTEC, INC.

DO NOT SCALE DRAWING

SHEET SCALE: 1:2

samtec

520 PARK EAST BLVD, NEW ALBANY, IN 47150
PHONE: 812-944-6733 FAX: 812-948-5047
e-Mail info@SAMTEC.com code 55322

DESCRIPTION:

PANEL MOUNT SEALED USB CABLE

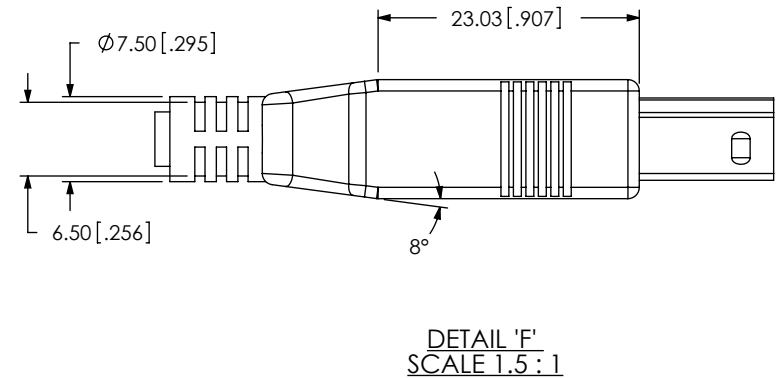
DWG. NO.

SCRUS-17-X-XX.XX-XXX-XX

BY: LENNY K

09-01-2010

SHEET 7 OF 15

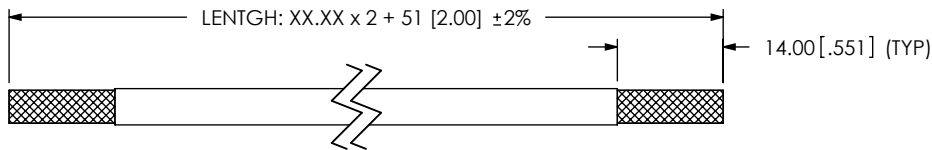


SHEET SCALE: 1:2

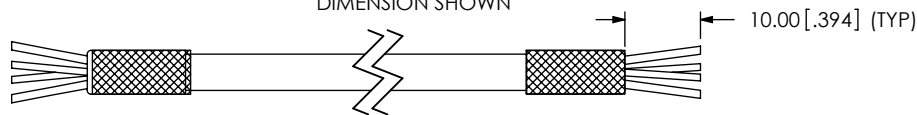
BY: LENNY K	09-01-2010	SHEET 8 OF 15
-------------	------------	---------------

REVISION Y

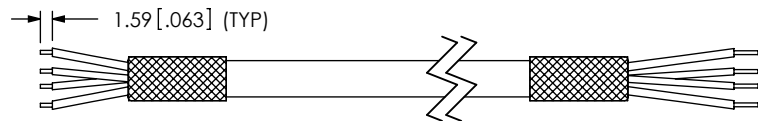
-BMS-BC: END OPTION
IN-PROCESS 1
CUT CABLES TO LENGTH & STRIP OUTER
JACKET TO DIMENSION SHOWN



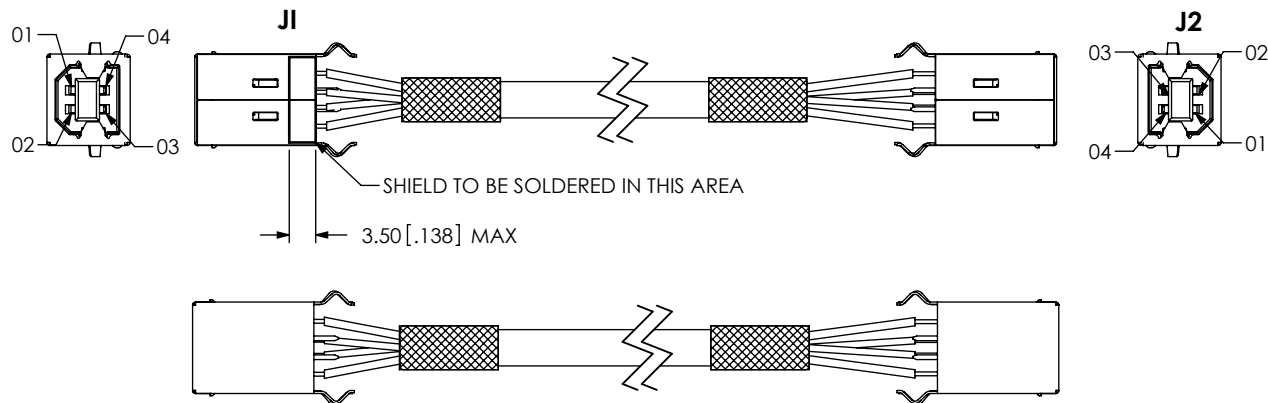
-BMS-BC: END OPTION
IN-PROCESS 2
FOLD BACK SHIELD & TRIM WIRES TO
DIMENSION SHOWN



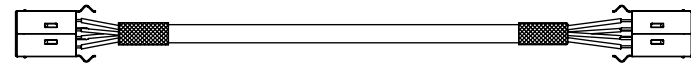
-BMS-BC: END OPTION
IN-PROCESS 3
STRIP INDIVIDUAL WIRES TO DIMENSION SHOWN



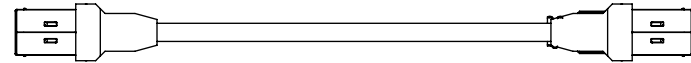
-BMS-BC: END OPTION
IN-PROCESS 4
TERMINATE TO USB-B-X-X-VTS-X
(SEE NOTE 14) (SEE TABLE 2 FOR PIN OUT)



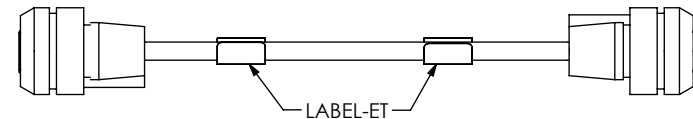
-BMS-BC: END OPTION
IN-PROCESS 5
CLIP TABS ON USB-B-X-X-VT-X



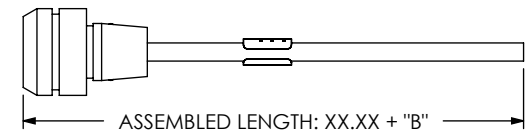
-BMS-BC: END OPTION
IN-PROCESS 6
ADD PREMOLD



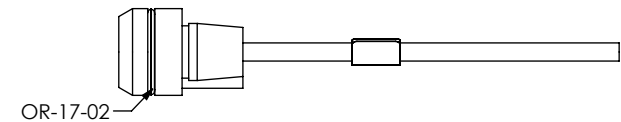
-BMS-BC: END OPTION
IN-PROCESS 7
ADD OVERMOLD



BMS-BC: END OPTION
IN-PROCESS 8
CUT IN HALF AND TRIM TO LENGTH



BMS-BC: END OPTION
IN-PROCESS 9
ADD O-RING



PROPRIETARY NOTE
THIS DOCUMENT CONTAINS INFORMATION
CONFIDENTIAL AND PROPRIETARY TO
SAMTEC, INC. AND SHALL NOT BE REPRODUCED
OR TRANSFERRED TO OTHER DOCUMENTS OR
DISCLOSED TO OTHERS OR USED FOR ANY
PURPOSE OTHER THAN THAT WHICH IT WAS
OBTAINED WITHOUT THE EXPRESSED WRITTEN
CONSENT OF SAMTEC, INC.

DO NOT SCALE DRAWING

SHEET SCALE: 1:1

samtec

520 PARK EAST BLVD, NEW ALBANY, IN 47150
PHONE: 812-944-6733 FAX: 812-948-5047
e-Mail: info@SAMTEC.com code 55322

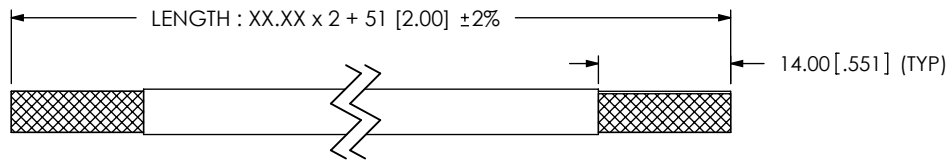
DESCRIPTION:
PANEL MOUNT SEALED USB CABLE

DWG. NO.
SCRUS-17-X-XX.XX-XXX-XX

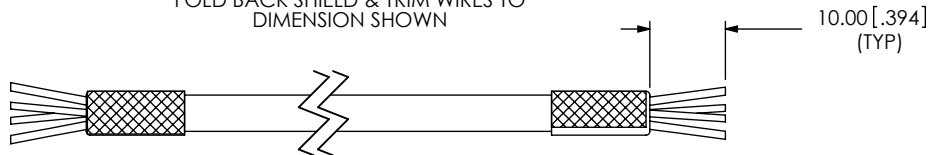
BY: LENNY K 09-01-2010 SHEET 9 OF 15

REVISION Y

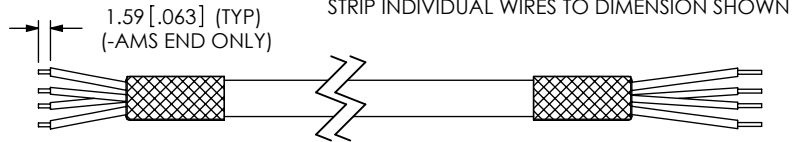
-AMS-BC: END OPTION IN-PROCESS 1 CUT CABLES TO LENGTH & STRIP OUTER JACKET TO DIMENSION SHOWN



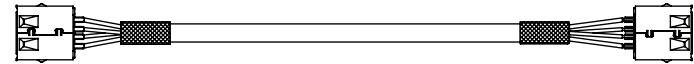
-AMS-BC: END OPTION IN-PROCESS 2 FOLD BACK SHIELD & TRIM WIRES TO DIMENSION SHOWN



-AMS-BC: END OPTION IN-PROCESS 3 STRIP INDIVIDUAL WIRES TO DIMENSION SHOWN



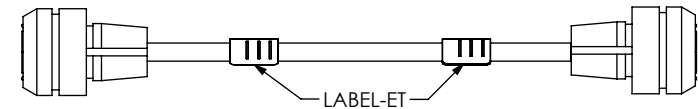
AMS-BC: END OPTION IN-PROCESS 6 CLIP TABS ON USB-A-S-S-B-VTS-R



AMS-BC: END OPTION IN-PROCESS 7 ADD PREMOLD



AMS-BC: END OPTION IN-PROCESS 8 ADD OVERMOLD



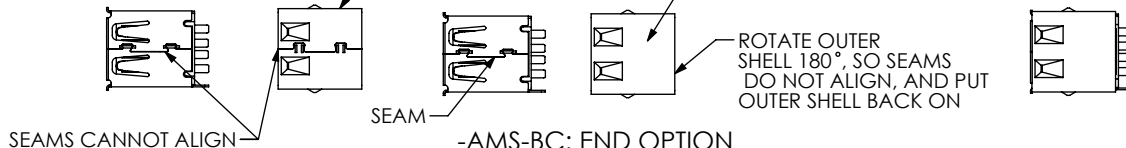
STEP 1

PULL OFF OUTER SHELL

STEP 2

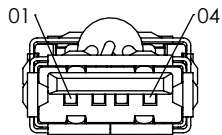
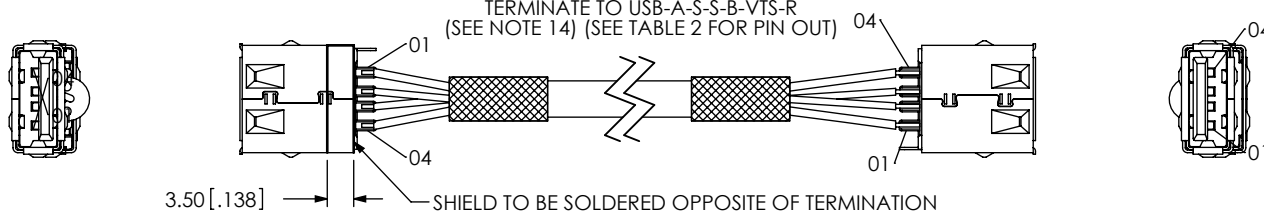
NO SEAM

STEP 3

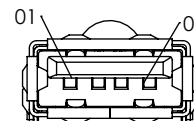
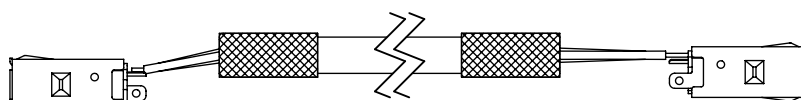


-AMS-BC: END OPTION IN-PROCESS 4 MODIFY USB-A-S-S-B-VTS-R

-AMS-BC: END OPTION IN-PROCESS 5 TERMINATE TO USB-A-S-S-B-VTS-R (SEE NOTE 14) (SEE TABLE 2 FOR PIN OUT)

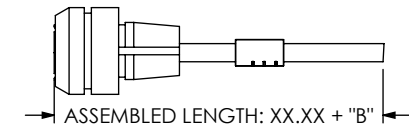


SCALE 1.5:1
FOR CLARITY

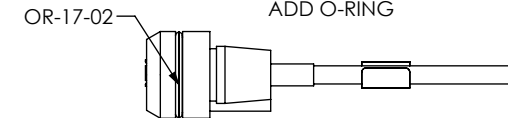


SCALE 1.5:1
FOR CLARITY

AMS-BC: END OPTION IN-PROCESS 9 CUT IN HALF AND TRIM TO LENGTH



AMS-BC: END OPTION IN-PROCESS 10 ADD O-RING



PROPRIETARY NOTE

THIS DOCUMENT CONTAINS INFORMATION CONFIDENTIAL AND PROPRIETARY TO SAMTEC, INC. AND SHALL NOT BE REPRODUCED OR TRANSFERRED TO OTHER DOCUMENTS OR DISCLOSED TO OTHERS OR USED FOR ANY PURPOSE OTHER THAN THAT WHICH IT WAS OBTAINED WITHOUT THE EXPRESSED WRITTEN CONSENT OF SAMTEC, INC.

DO NOT SCALE DRAWING

SHEET SCALE: 1:1.33333

samtec

520 PARK EAST BLVD, NEW ALBANY, IN 47150
PHONE: 812-944-6733 FAX: 812-948-5047
e-Mail: info@SAMTEC.com code 55322

DESCRIPTION:

PANEL MOUNT SEALED USB CABLE

DWG. NO.

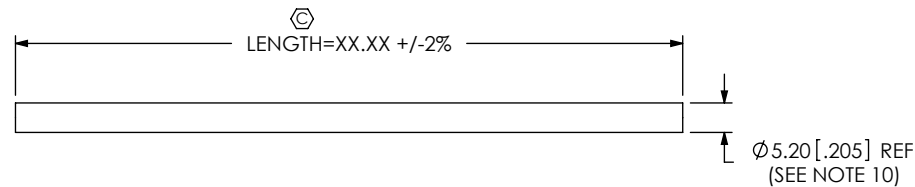
SCRUS-17-X-XX.XX-XXX-XX

BY: LENNY K

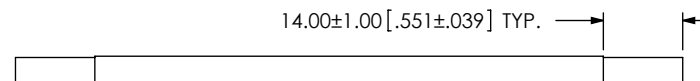
09-01-2010

SHEET 10 OF 15

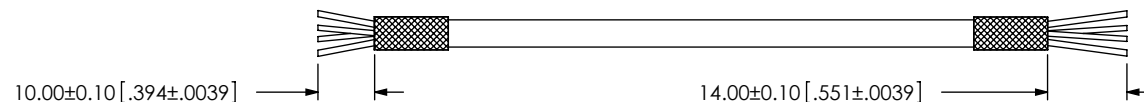
REVISION Y



-BMS-AM: END OPTION
IN-PROCESS 1
UCA-03-01
CUT CABLES TO LENGTH

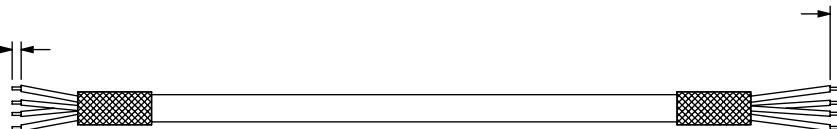


-BMS-AM: END OPTION
IN-PROCESS 2
UCA-03-01
STRIP OUTER JACKET TO DIMENSION SHOWN



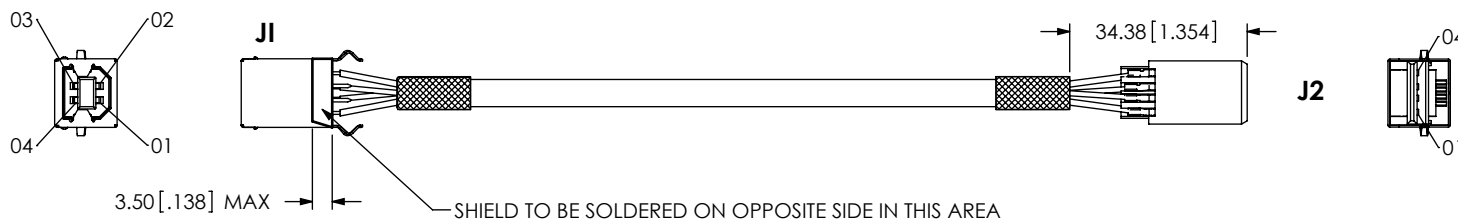
-BMS-AM: END OPTION
IN-PROCESS 3
FOLD BACK SHIELD & TRIM WIRES TO LENGTH

1.59 [.063] (TYP)
(-BMS END ONLY)

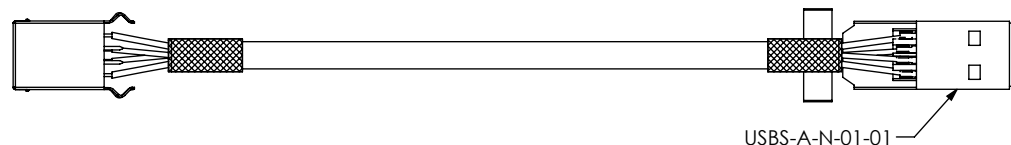


-BMS-AM: END OPTION
IN-PROCESS 4
STRIP INDIVIDUAL CABLES TO DIMENSION SHOWN

-BMS-AM: END OPTION
IN-PROCESS 5
TERMINATE TO USB-B-S-B-VT-R & SUB-USB-A-G-B-01



-BMS-AM: END OPTION
IN-PROCESS 6
ADD USBS-A-N-01-01 (SEE NOTE 13)



F:\DWG\MISC\MKTG\SCRUS-17-X-XX.XX-XXX-XX-MKT.SLDDRW

PROPRIETARY NOTE

THIS DOCUMENT CONTAINS INFORMATION
CONFIDENTIAL AND PROPRIETARY TO
SAMTEC, INC. AND SHALL NOT BE REPRODUCED
OR TRANSFERRED TO OTHER DOCUMENTS OR
DISCLOSED TO OTHERS OR USED FOR ANY
PURPOSE OTHER THAN THAT WHICH IT WAS
OBTAINED WITHOUT THE EXPRESSED WRITTEN
CONSENT OF SAMTEC, INC.

DO NOT SCALE DRAWING

SHEET SCALE: 0.75:1

samtec

520 PARK EAST BLVD, NEW ALBANY, IN 47150
PHONE: 812-944-6733 FAX: 812-948-5047
e-Mail: info@SAMTEC.com code 55322

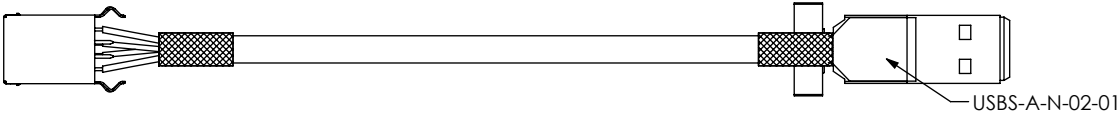
DESCRIPTION:
PANEL MOUNT SEALED USB CABLE

DWG. NO.
SCRUS-17-X-XX.XX-XXX-XX

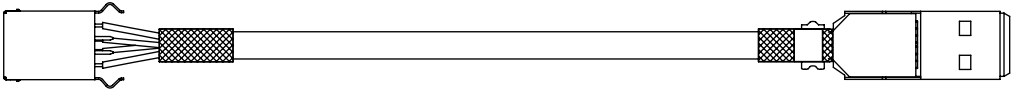
BY: LENNY K 09-01-2010 SHEET 11 OF 15

REVISION Y

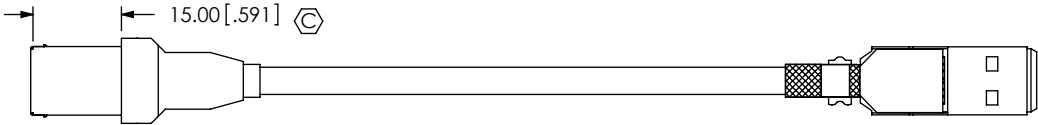
-BMS-AM: END OPTION
IN-PROCESS 7
ADD USB5-A-N-02-01 (SEE NOTE 13)



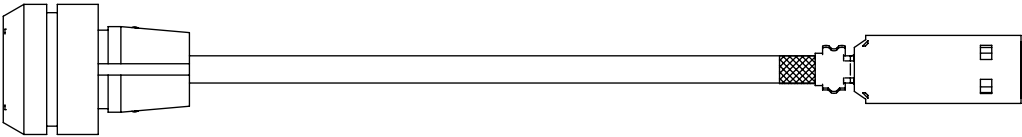
-BMS-AM: END OPTION
IN-PROCESS 8 & 9
CRIMP SHELLS OVERBAND
TRIM SHIELD TAB ON USB-B-S-S-B-VT-R



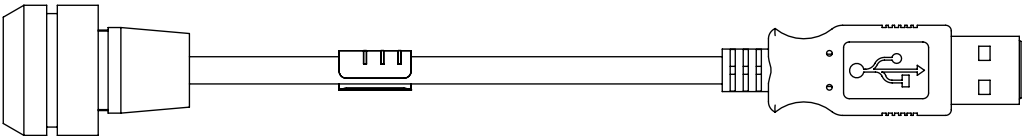
-BMS-AM: END OPTION
IN-PROCESS 10
PREMOLD
(SAME AS -AMS-AM, UNLESS OTHERWISE NOTED)



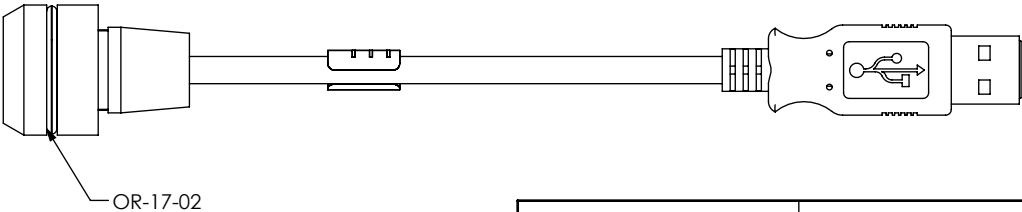
-BMS-AM: END OPTION
IN-PROCESS 11
OVERMOLD USB
(SAME AS -AMS-AM, UNLESS OTHERWISE NOTED)



-BMS-AM: END OPTION
IN-PROCESS 12
ADD OVERMOLD TO END 2
(SAME AS -AMS-AM, UNLESS OTHERWISE NOTED)



-BMS-AM: END OPTION
N-PROCESS 13
ADD OR-17-02



PROPRIETARY NOTE
THIS DOCUMENT CONTAINS INFORMATION
CONFIDENTIAL AND PROPRIETARY TO
SAMTEC, INC. AND SHALL NOT BE REPRODUCED
OR TRANSFERRED TO OTHER DOCUMENTS OR
DISCLOSED TO OTHERS OR USED FOR ANY
PURPOSE OTHER THAN THAT WHICH IT WAS
OBTAINED WITHOUT THE EXPRESSED WRITTEN
CONSENT OF SAMTEC, INC.

DO NOT SCALE DRAWING

SHEET SCALE: 0.75:1

samtec

520 PARK EAST BLVD, NEW ALBANY, IN 47150
PHONE: 812-944-6733 FAX: 812-948-5047
e-Mail: info@SAMTEC.com code 55322

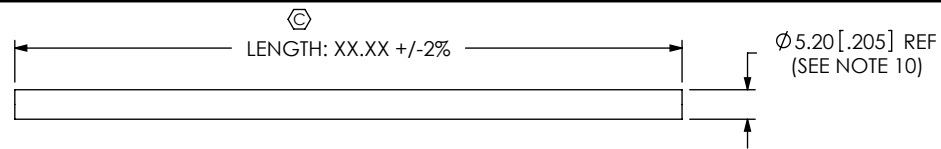
DESCRIPTION:
PANEL MOUNT SEALED USB CABLE

DWG. NO.
SCRUS-17-X-XX.XX-XXX-XX

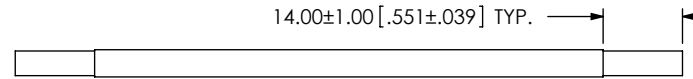
BY: LENNY K 09-01-2010 SHEET 12 OF 15

REVISION Y

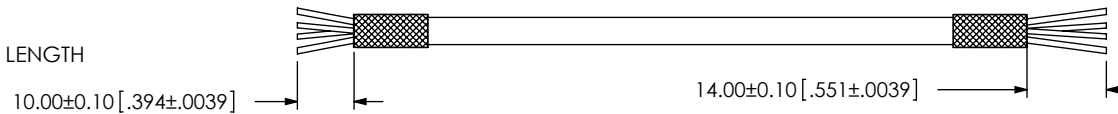
-AMS-BM: END OPTION
IN-PROCESS 1
UCA-03-01
CUT CABLES TO LENGTH



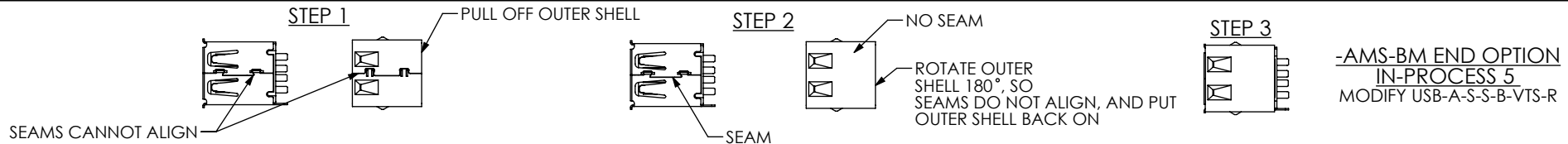
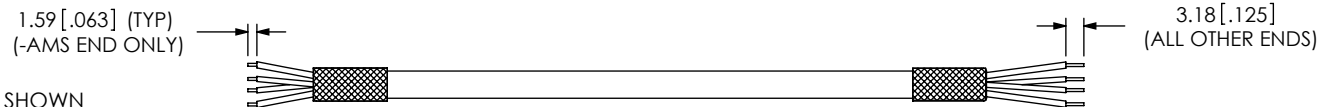
-AMS-BM: END OPTION
IN-PROCESS 2
UCA-03-01
STRIP OUTER JACKET TO DIMENSION SHOWN



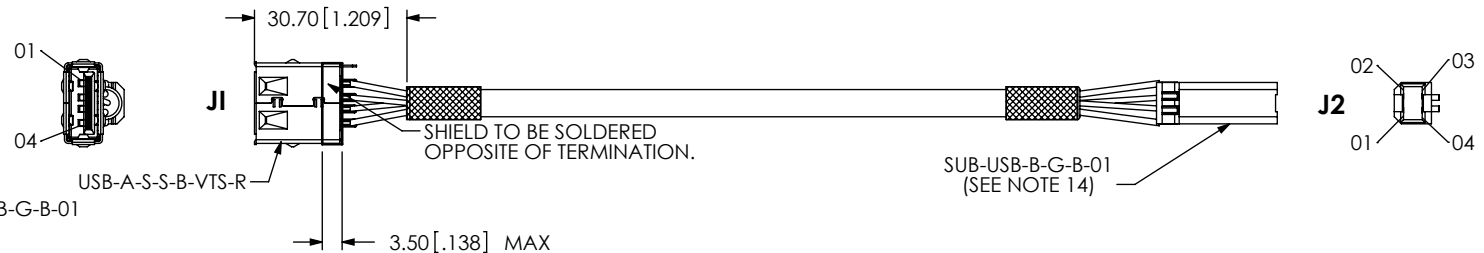
-AMS-BM: END OPTION
IN-PROCESS 3
FOLD BACK SHIELD & TRIM WIRES TO LENGTH



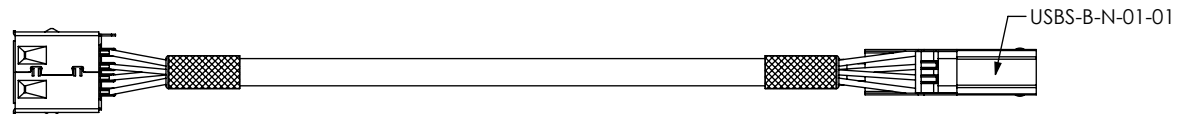
-AMS-BM: END OPTION
IN-PROCESS 4
STRIP INDIVIDUAL CABLES TO DIMENSION SHOWN



-AMS-BM END OPTION
IN-PROCESS 6
TERMINATE TO USB-A-S-S-B-VTS-R & SUB-USB-B-G-B-01
(SEE NOTE 14)
(SEE TABLE 3 FOR PINOUT)



-AMS-BM END OPTION
IN-PROCESS 7
ADD USBS-B-N-01-01 SHELL (SEE NOTE 14)



PROPRIETARY NOTE
THIS DOCUMENT CONTAINS INFORMATION
CONFIDENTIAL AND PROPRIETARY TO
SAMTEC, INC. AND SHALL NOT BE REPRODUCED
OR TRANSFERRED TO OTHER DOCUMENTS OR
DISCLOSED TO OTHERS OR USED FOR ANY
PURPOSE OTHER THAN THAT WHICH IT WAS
OBTAINED WITHOUT THE EXPRESSED WRITTEN
CONSENT OF SAMTEC, INC.

DO NOT SCALE DRAWING

SHEET SCALE: 0.75:1

samtec

520 PARK EAST BLVD, NEW ALBANY, IN 47150
PHONE: 812-944-6733 FAX: 812-948-5047
e-Mail: info@SAMTEC.com code 55322

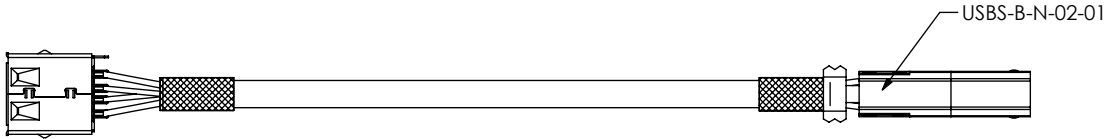
DESCRIPTION:
PANEL MOUNT SEALED USB CABLE

DWG. NO.
SCRUS-17-X-XX.XX-XXX-XX

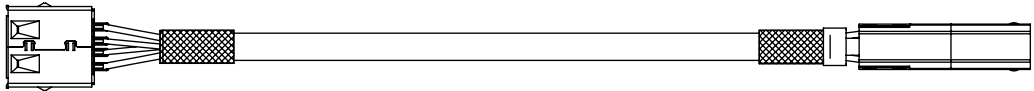
BY: LENNY K 09-01-2010 SHEET 13 OF 15

REVISION Y

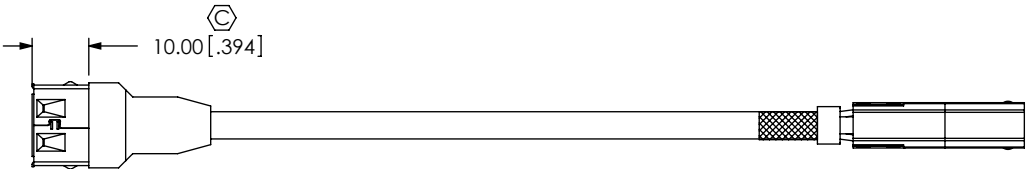
-AMS-BM END OPTION
IN-PROCESS 8
ADD USBS-B-N-02-01 SHELL (SEE NOTE 14)



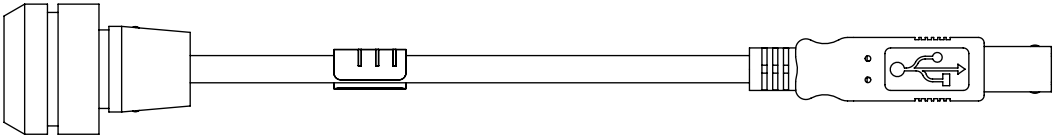
-AMS-BM END OPTION
IN-PROCESS 9 & 10
CRIMP SHELL OVER BRAID
TRIM TAB ON USB-A-S-S-B-VTS-R



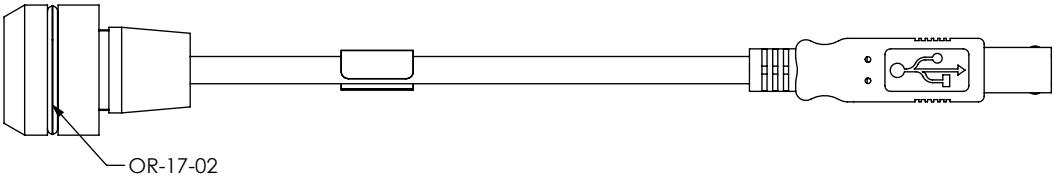
-AMS-BM END OPTION
IN-PROCESS 11
PREMOLD
(SAME AS -BMS-BM, UNLESS OTHERWISE STATED)



-AMS-BM END OPTION
IN-PROCESS 12
OVERMOLDING
(SAME AS -BMS-BM, UNLESS OTHERWISE STATED)



-AMS-BM END OPTION
IN-PROCESS 13
ADD OR-17-02



PROPRIETARY NOTE

THIS DOCUMENT CONTAINS INFORMATION
CONFIDENTIAL AND PROPRIETARY TO
SAMTEC, INC. AND SHALL NOT BE REPRODUCED
OR TRANSFERRED TO OTHER DOCUMENTS OR
DISCLOSED TO OTHERS OR USED FOR ANY
PURPOSE OTHER THAN THAT WHICH IT WAS
OBTAINED WITHOUT THE EXPRESSED WRITTEN
CONSENT OF SAMTEC, INC.

DO NOT SCALE DRAWING

SHEET SCALE: 1:2

samtec

520 PARK EAST BLVD, NEW ALBANY, IN 47150
PHONE: 812-944-6733 FAX: 812-948-5047
e-Mail info@SAMTEC.com code 55322

DESCRIPTION:
PANEL MOUNT SEALED USB CABLE

DWG. NO.
SCRUS-17-X-XX.XX-XXX-XX

BY: LENNY K 09-01-2010 SHEET 14 OF 15

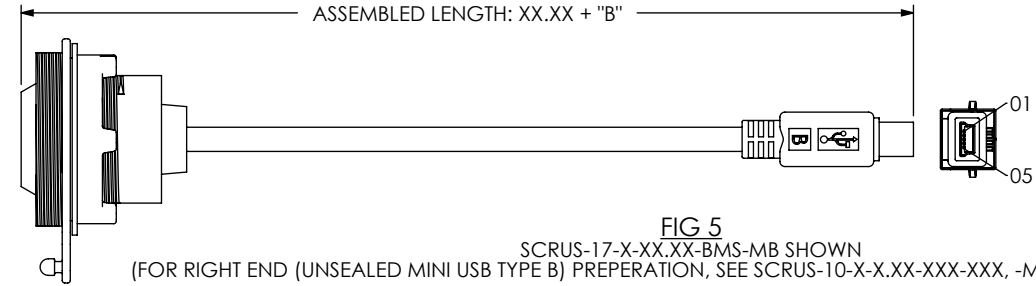
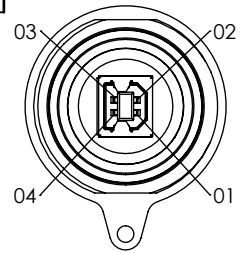


FIG 5
SCRUS-17-X-XX.XX-BMS-MB SHOWN
(FOR RIGHT END (UNSEALED MINI USB TYPE B) PREPERATION, SEE SCRUS-10-X-X.XX-XXX-XXX, -MB RIGHT END OPTION)

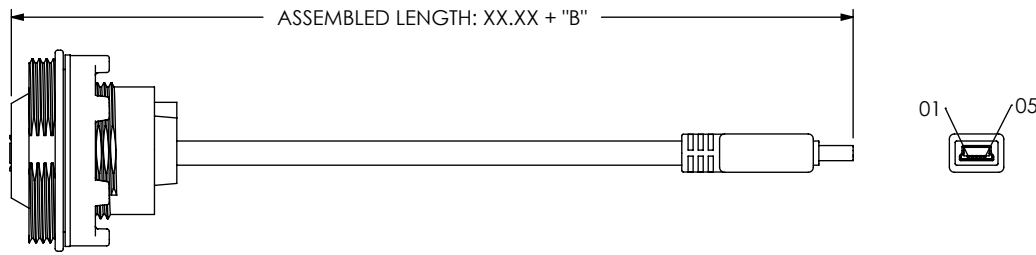
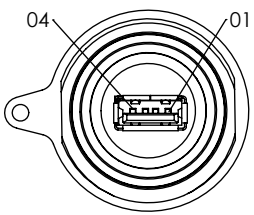


FIG 6
SCRUS-17-X-XX.XX-AMS-MB SHOWN
(FOR RIGHT END (UNSEALED MINI USB TYPE B) PREPERATION, SEE SCRUS-10-X-X.XX-XXX-XXX, -MB RIGHT END OPTION)

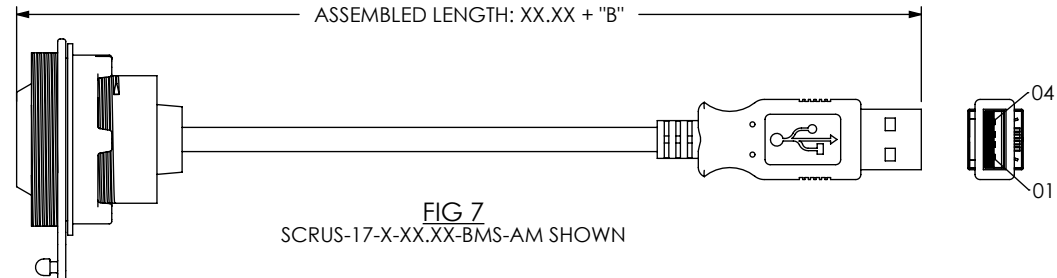
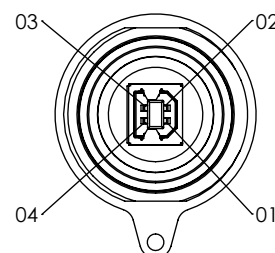


FIG 7
SCRUS-17-X-XX.XX-BMS-AM SHOWN

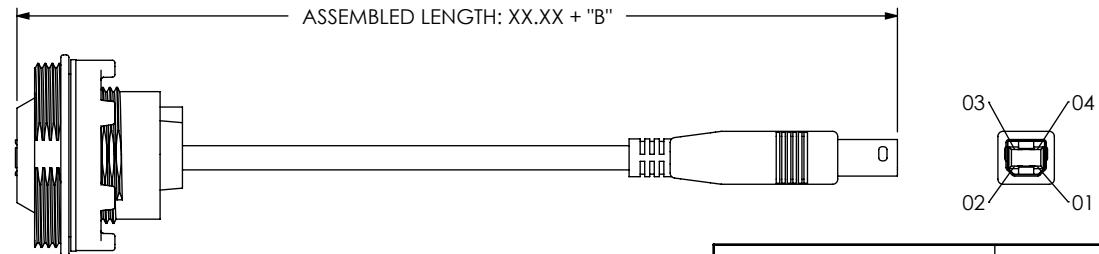
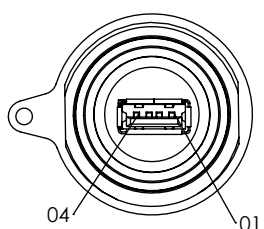


FIG 8
SCRUS-17-X-XX.XX-AMS-BM SHOWN

PROPRIETARY NOTE THIS DOCUMENT CONTAINS INFORMATION CONFIDENTIAL AND PROPRIETARY TO SAMTEC, INC. AND SHALL NOT BE REPRODUCED OR TRANSFERRED TO OTHER DOCUMENTS OR DISCLOSED TO OTHERS OR USED FOR ANY PURPOSE OTHER THAN THAT WHICH IT WAS OBTAINED WITHOUT THE EXPRESSED WRITTEN CONSENT OF SAMTEC, INC.		 520 PARK EAST BLVD, NEW ALBANY, IN 47150 PHONE: 812-944-6733 FAX: 812-948-5047 e-Mail info@SAMTEC.com code 55322
DO NOT SCALE DRAWING SHEET SCALE: 1:1		
DESCRIPTION: PANEL MOUNT SEALED USB CABLE		DWG. NO. SCRUS-17-X-XX.XX-XXX-XX
BY: LENNY K 09-01-2010		
SHEET 15 OF 15		