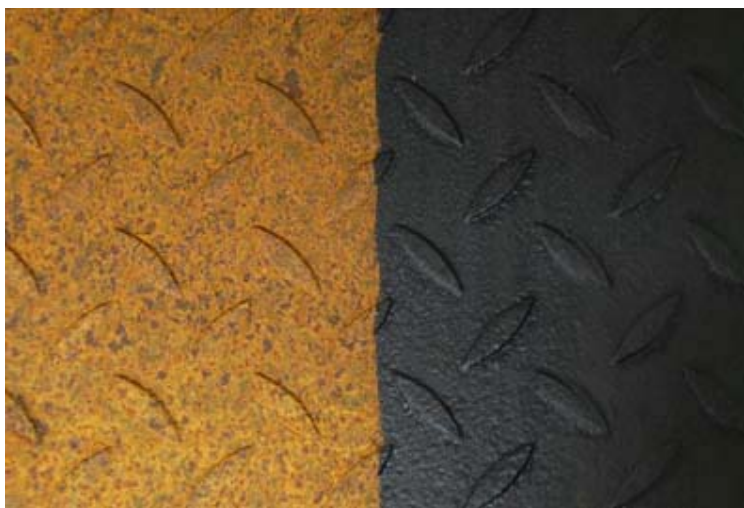


RUST CONVERTER

Reference : 10804

1. General description

Rapidly converts rust into a tough, protective surface effectively extending the equipment life of all ferrous structures. Can be over-painted with aesthetic top coat e.g CRC Galvacolor.



2. Features

- No need for sand blasting (considered as a "hot" process in chemical industries).
- No special safety precautions as for shot and sand blasting.
- No shut down of production processes.
- Can be finished with CRC Galvacolor as top coat.
- Totally free of lead and chromates.
- No chlorinated solvents.

3. Applications

- Suitable for use throughout the industry.
- Handling equipment.
- Railroad equipment.
- Agricultural equipment.
- Steel construction.
- Ship repair.
- Surface treatment.
- Corrosion protection of all ferrous materials.

RUST CONVERTER

Reference : 10804

4. Directions

- **CRC Rust Converter acts on three fields:**

1. **Inactivates rust formation:**

The unstable ferric hydroxide, formed at the start of the corrosion process of Iron, is transformed into a stable complex

2. **Formation of a passivating protective coating:**

The formed complexes will create, together with the unique resin of CRC Rust Converter, a non permeable coating, providing protection for future corrosion.

3. **Function as a primer:** The black protective coating has an ideal structure and composition to act as a primer for eventual future top coats like CRC Galvacolor.

- Stir or mix bulk products well before use.
- Repeat frequently during the application.
- Use only with adequate ventilation.
- Apply an even coat with a standard paint brush.
- When a brush has been used, this one can not be cleaned after use.
- Do not mix with other products.
- Do not store the product at temperatures below 0°C.
- A safety data sheet (MSDS) according to EC Regulation N° 1907/2006 Art.31 and amendments is available for all CRC products.

5. Typical product data (without propellant)

Appearance	Viscous liquid.
Color	Blue-green.
Odor	Odorless.
Density	1.2 g/cm ³ (@ 20°C).
Viscosity	Not available.
pH	2.5-3.5
Flash Point	None
Operating temperature active product	-20 --> +60 °C
Drying time active product	30 min
salt spray resistance active product	100 h
Typical coat weight	20 µm
Adhesion on steel dry coating	0 GT



RUST CONVERTER

Reference : 10804

6. Packaging

Bulk	12x75 ML
	6x1 L
	6x750 ML

All statements in this publication are based on service experience and/or laboratory testing. Because of the wide variety of equipment, conditions of use and the unpredictable human factors involved, we recommend that our products are tested on-the-job prior to use. All information is given in good faith but without warranty neither expressed nor implied. This Technical Data Sheet may already have been revised as a result of a change in legislation, availability of components or newly acquired experiences. The latest and only valid version of this Technical Data Sheet will be sent to you upon simple request or can be found on our website: www.crcind.com We recommend that you register on our website for this product, thus enabling you to automatically receive any future updates.

Version CRC_GREEN-RUST_CONVERTER-20110329

Date 29/03/2011



Manufactured by :
CRC Industries Europe bvba
Touwslagerstraat 1
9240 Zele Belgium
Tél.: (32)(0) 52/45.60.11 Fax : (32)(0) 52/45.00.34
www.crcind.com

