

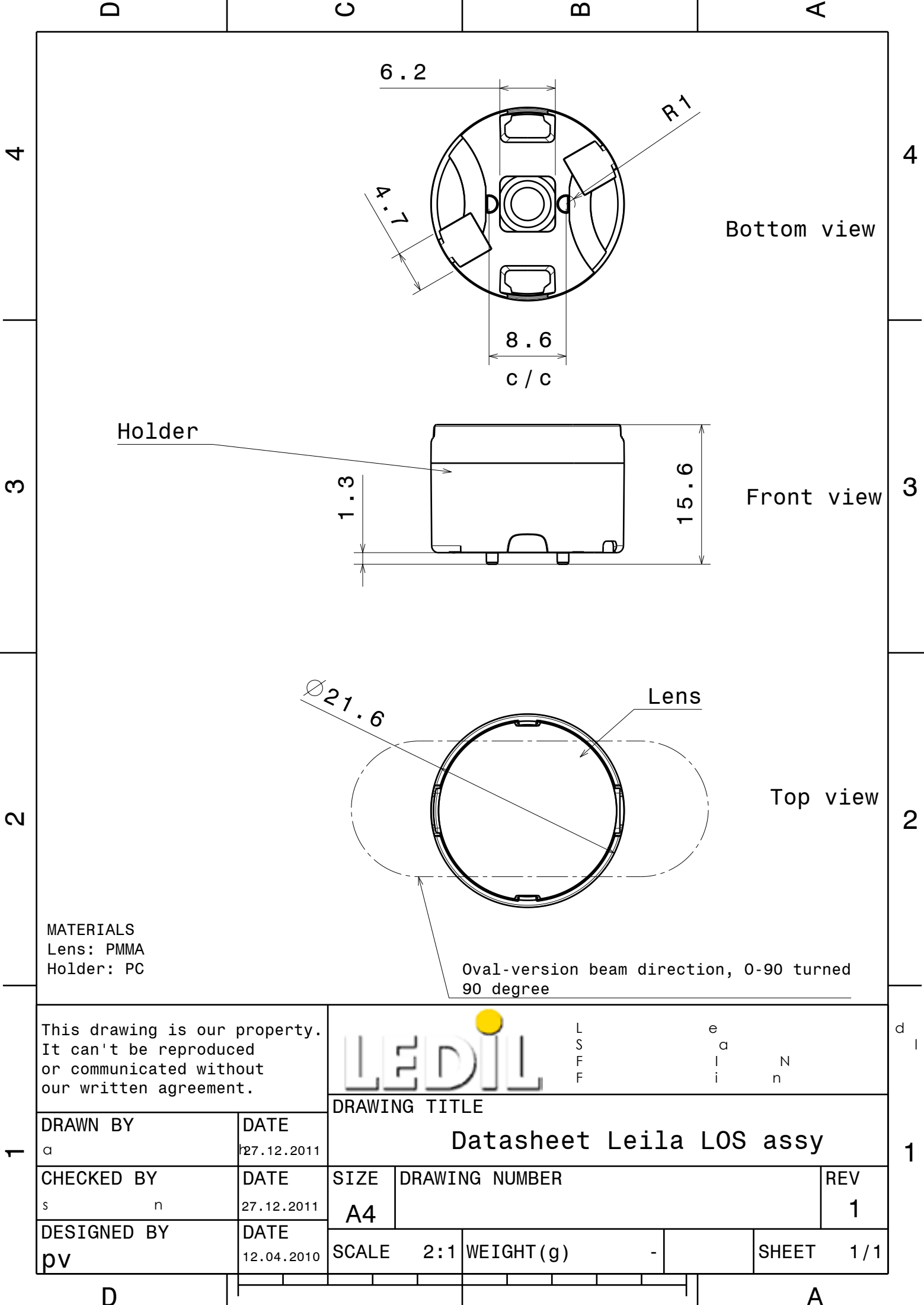
## DETAILS

Product Number	CP13059_LOS-RS2
Family	Leila
Type	Assembly
Color	white
Diameter	21.6 mm
Height	14.3 mm
Style	round
Optic Material	PMMA
Holder Material	PC
Fastening	pin, glue
Status	ready
ROHS Compliant	Yes
Date Updated	6/06/2014



## OPTICAL PROPERTIES

LED	Viewing Angle	Light Beam	Efficiency	cd/lm	connector
Oslon SSL 150	5 degrees		93 %	38.600	-
Oslon Square EC	10 degrees		92 %	21.000	-



MATERIALS  
Lens: PMMA  
Holder: PC

This drawing is our property.  
It can't be reproduced  
or communicated without  
our written agreement.



L  
S  
F  
F

e  
a  
i  
n

d  
l

DRAWING TITLE

Datasheet Leila LOS assy

DRAWN BY

a

DATE

27.12.2011

CHECKED BY

s n

DATE

27.12.2011

DESIGNED BY

pv

DATE

12.04.2010

SIZE

A4

DRAWING NUMBER

REV

1

SCALE

2:1

WEIGHT (g)

-

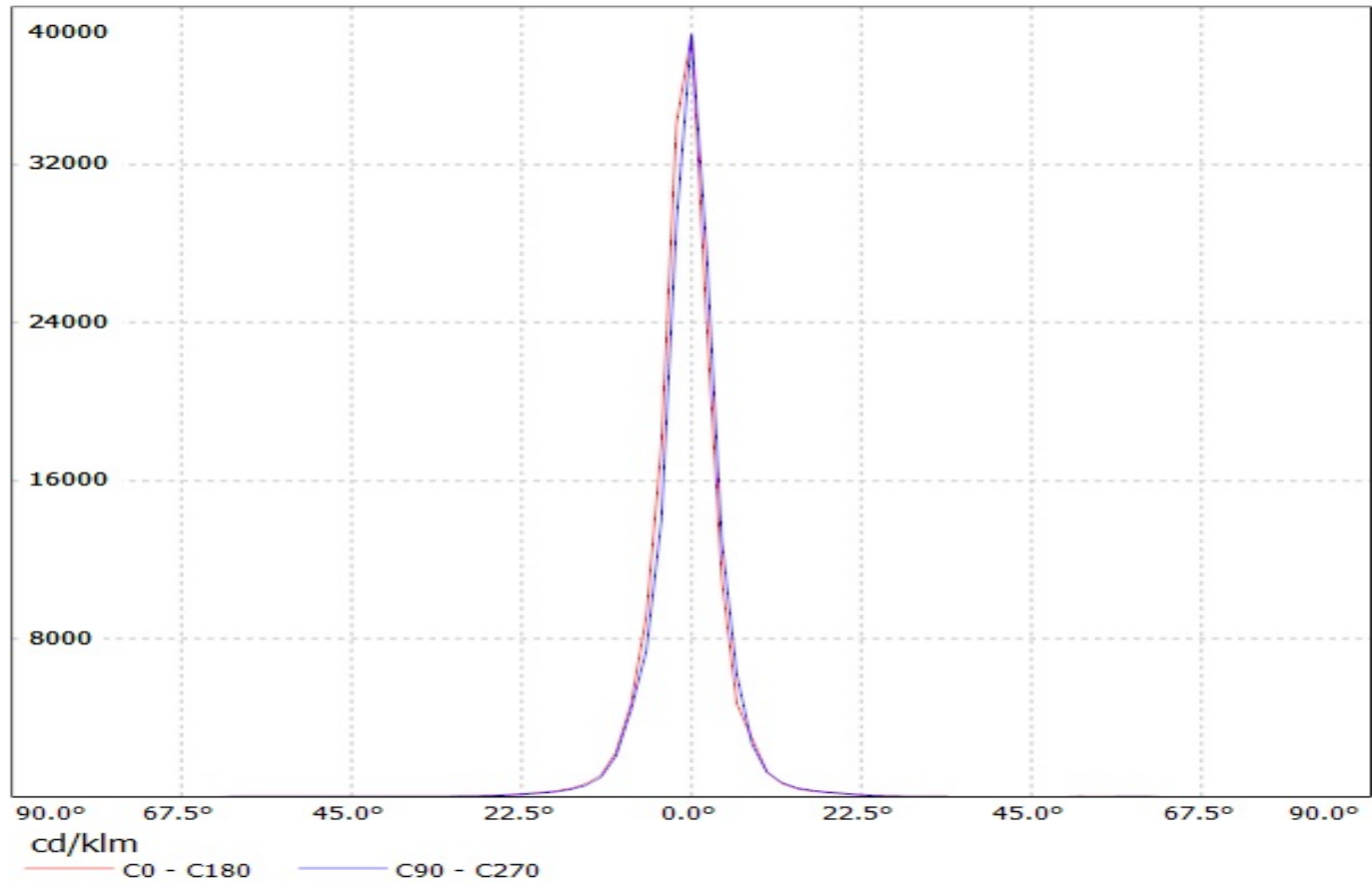
SHEET

1 / 1

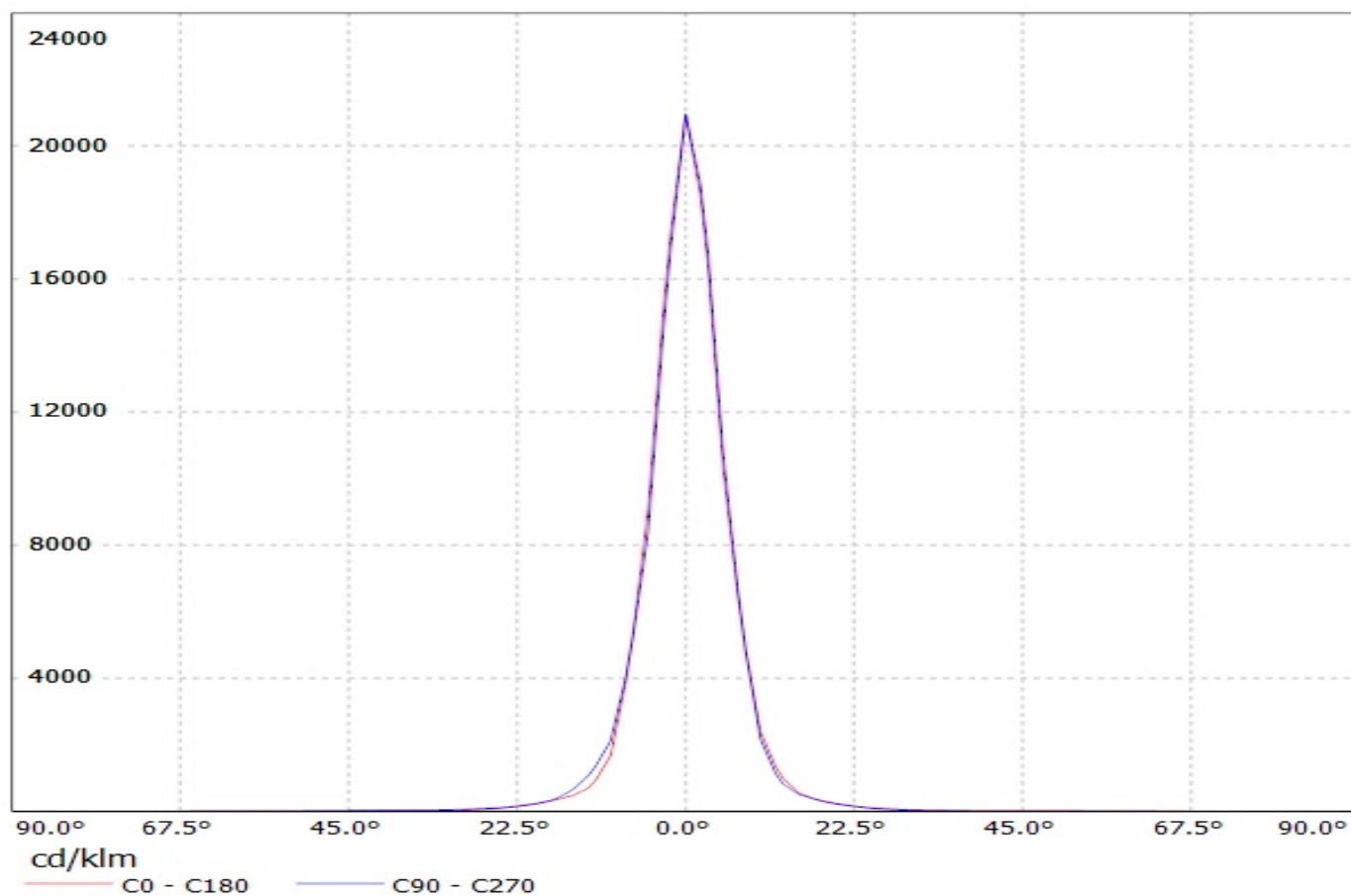
D

A

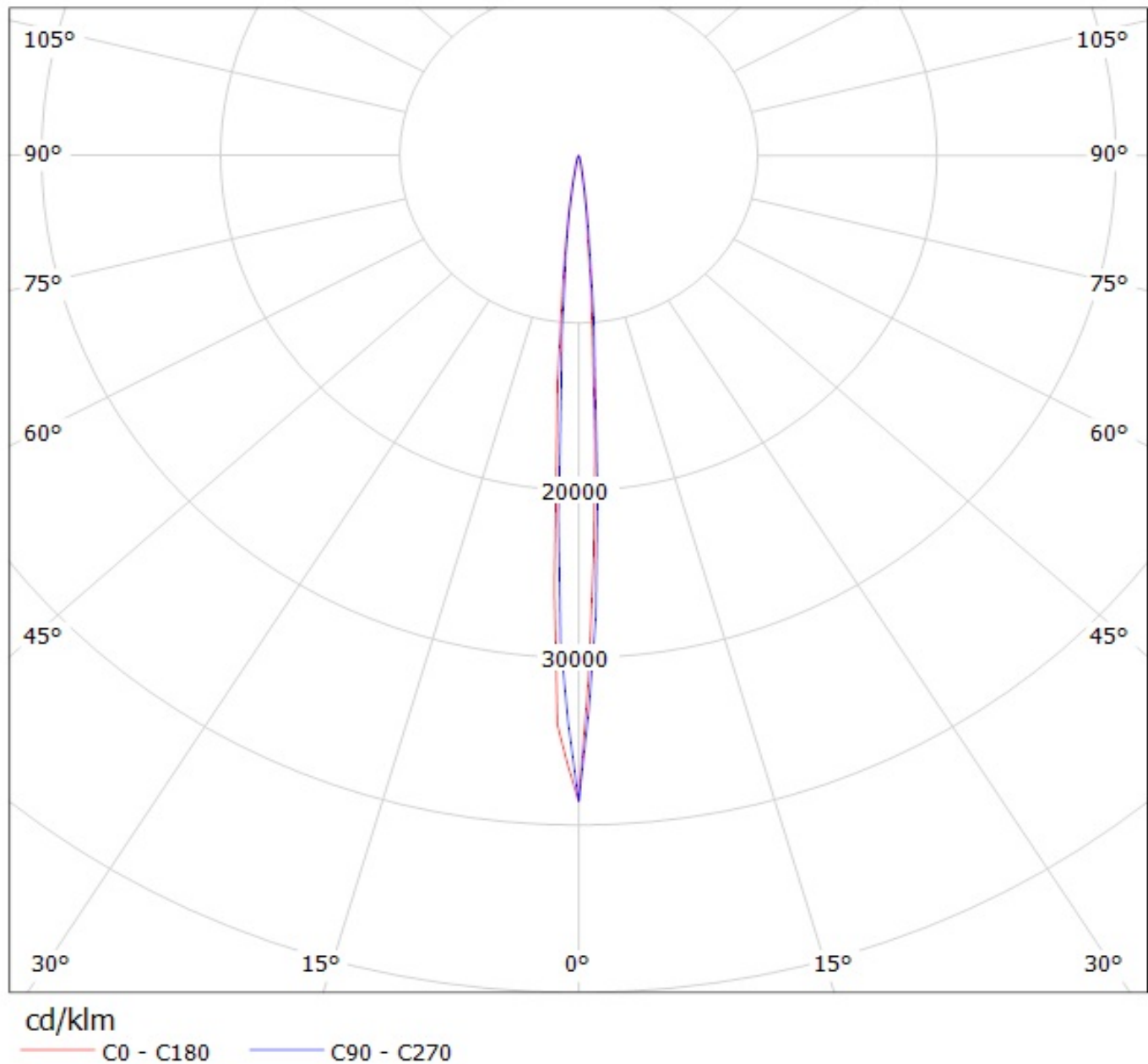
Luminaire: Ledil Oy CP13059\_LOS-RS2 (Osram Oslon 150dg 72lm @ 250mA) Efficiency=93%  
Lamps: 1 x Osram Oslon 150dg 72lm @ 250mA



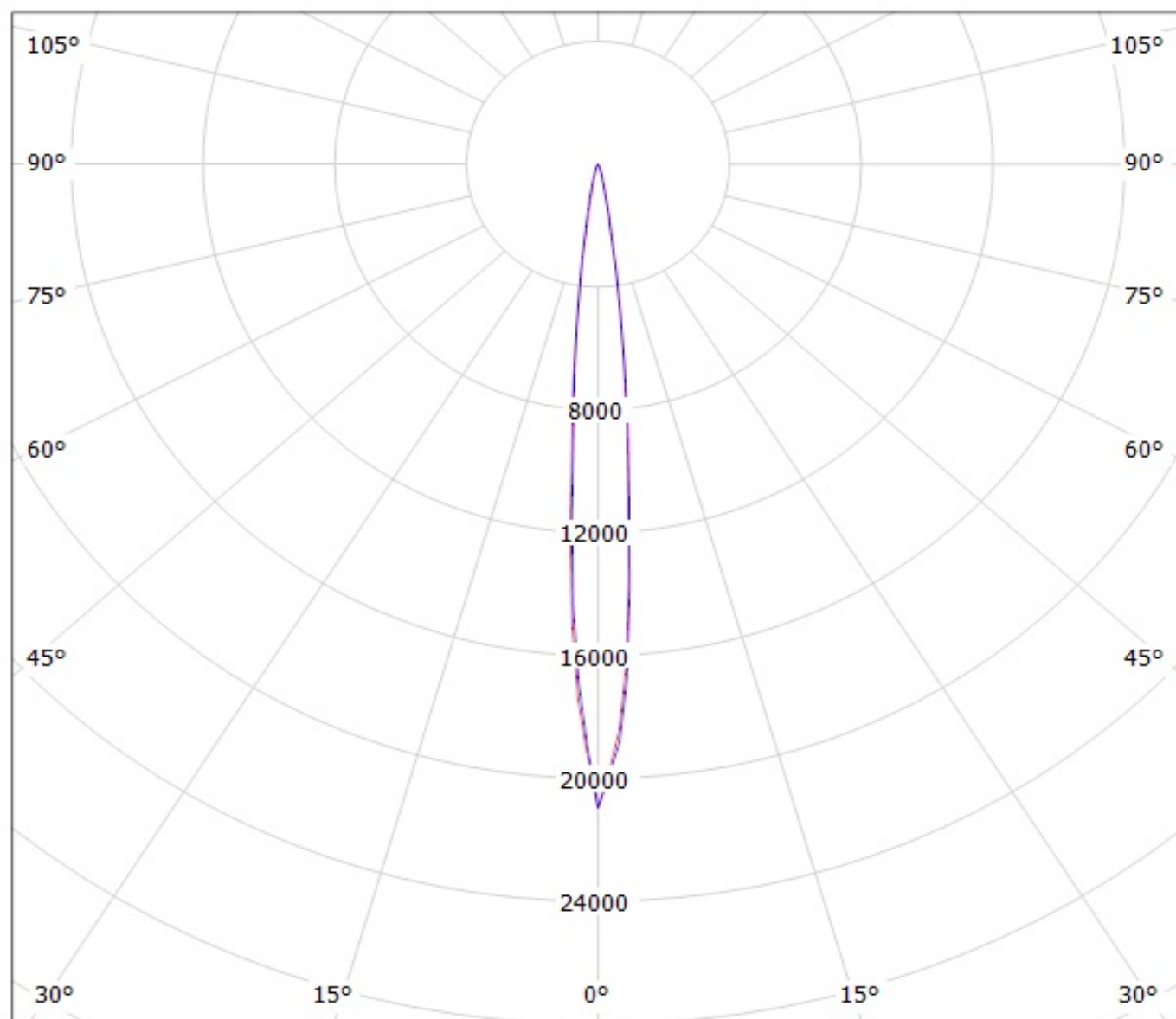
Luminaire: Ledil Oy CP13059\_LOS-RS2 (Osram Square EC 69lm @ 250mA) Efficiency=92%  
Lamps: 1 x Osram Square EC 69lm @ 250mA



Luminaire: Ledil Oy CP13059\_LOS-RS2 (Osram Oslon 150dg 72lm @ 250mA) Efficiency=93%  
Lamps: 1 x Osram Oslon 150dg 72lm @ 250mA



Luminaire: Ledil Oy CP13059\_LOS-RS2 (Osram Square EC 69lm @ 250mA) Efficiency=92%  
Lamps: 1 x Osram Square EC 69lm @ 250mA



cd/klm

— C0 - C180

— C90 - C270

**NOTE: The typical divergence will be changed by different color, chip size and chip position tolerance. The typical total divergence is the full angle measured where the luminous intensity is half of the peak value.**