

**Ordering number C11805_ANNA-40-6-S**

Family	Anna-40-6	FWHM	15 degrees
Type	Lens array	Efficiency	92 %
LED	Z5M	cd/Im	7.800
Color	Clear	Gerber File	Available
Diameter	40 mm		
Height	10.7 mm		
Style	Round		
Optic Material	PMMA		
Holder Material	-		
Fastening	Glue, pin		
Status	Ready		

Ordering number C11806_ANNA-40-6-M

Family	Anna-40-6	FWHM	23 degrees
Type	Lens array	Efficiency	83 %
LED	Z5M	cd/Im	2.900
Color	Clear	Gerber File	Available
Diameter	40 mm		
Height	10.7 mm		
Style	Round		
Optic Material	PMMA		
Holder Material	-		
Fastening	Pin, glue		
Status	Ready		

Ordering number C11807_ANNA-40-6-W

Family	Anna-40-6	FWHM	32 degrees
Type	Lens array	Efficiency	83 %
LED	Z5M	cd/Im	1.900
Color	Clear	Gerber File	Available
Diameter	40 mm		
Height	10.7 mm		
Style	Round		
Optic Material	PMMA		
Holder Material	-		
Fastening	Glue, pin		
Status	Ready		

NOTE: The typical divergence will be changed by different color, chip size and chip position tolerance. The typical total divergence is the full angle measured where the luminous intensity is half of the peak value.



PRODUCT DATASHEET

Anna-40-6 series

last update 27/2/2013



GENERAL INFORMATION

- Product series especially designed & optimized for Z5M series of LEDs.
- Special care taken to make light distribution as uniform as possible.
- Lens material optical grade PMMA with high UV and temperature resistance. Allows use of high current and temperature conditions.

Please find more information about used material from below:

http://ledil.fi/sites/default/files/Documents/Technical/Material/PMMA%20N%20UL94_Yellow%20Card.pdf

<http://ledil.fi/sites/default/files/Documents/Technical/Material/PMMA%20N%20PLEXIGLAS-Datasheet.pdf>

- Fastening to PCB with appropriate adhesive. By clicking link below you can find Ledil recommended glue options.

http://www.ledil.com/datasheets/DataSheet_GLUES.pdf

NOTE 1: We advise customer to ensure the suitability and sufficiency of the bond in the end product. For example, mechanical stress, vibration and holes on the surface of the circuit board weaken the strength of the glue.

NOTE 2: All surfaces where glue is applied must be clean, dry and free from grease and dirt. If cleaning of PCB surfaces is needed, please follow strictly the cleaning instructions of your LED manufacturer -this is important as cleaning shall under no circumstances damage LEDs or other electronics components on the PCB.

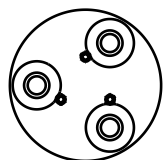
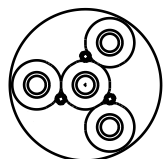
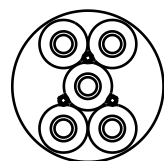
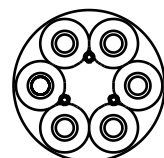
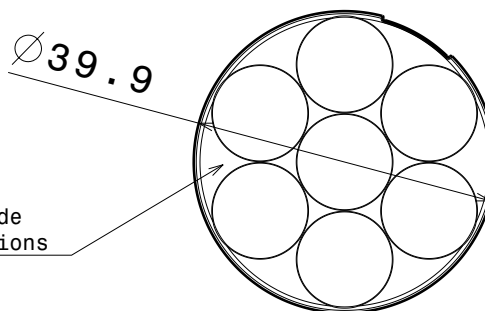
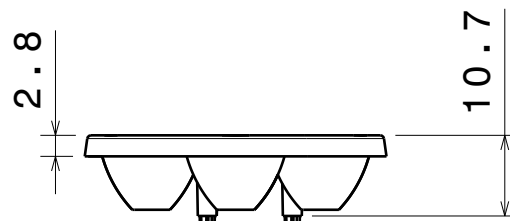
Further note that optical components shall not be cleaned with any chemicals - only micro fiber cloth may be used to remove fingerprints or other traces from handling.

D

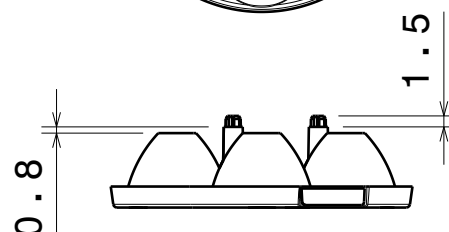
C

B

A

Anna-3Anna-4Anna-5Anna-6Anna-7

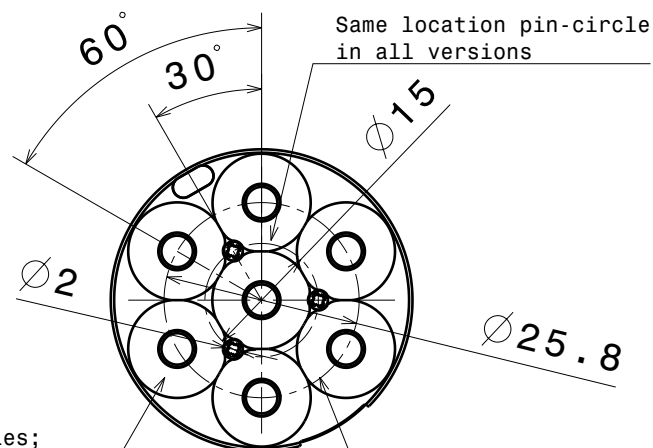
Same top side
in all versions



Material: PMMA

Versions:

Anna-3-S
Anna-3-M
Anna-3-W
Anna-4-S
Anna-4-M
Anna-4-W
Anna-5-S
Anna-5-M
Anna-5-W
Anna-6-S
Anna-6-M
Anna-6-W
Anna-7-S
Anna-7-M
Anna-7-W



Number of cones varies;
3, 4, 5, 6 and 7pcs
on bottom side depending
the version.

Same led-circle
in all versions

This drawing is our property.
It can't be reproduced
or communicated without
our written agreement.

LEDIL

L
T
F
F

e
e
i
i

N
n

d
h

DRAWING TITLE

Datasheet Anna40-series Lens

DRAWN BY

p

DATE

12.10.2010

CHECKED BY

s

n

DATE

12.10.2010

DESIGNED BY

hh

DATE

30.07.2010

SIZE

A4

DRAWING NUMBER

-

REV

1

SCALE

1:1

WEIGHT (g)

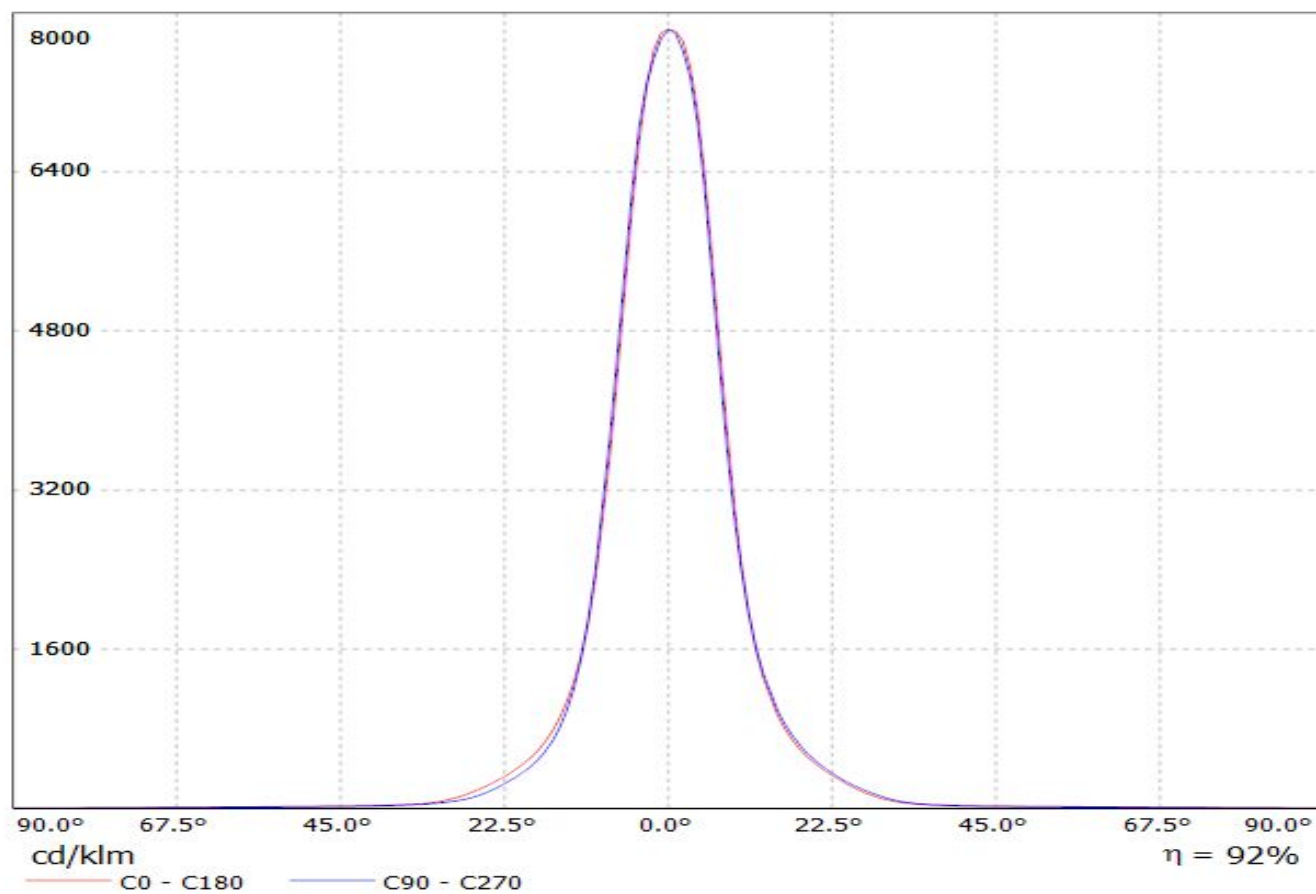
SHEET

1/1

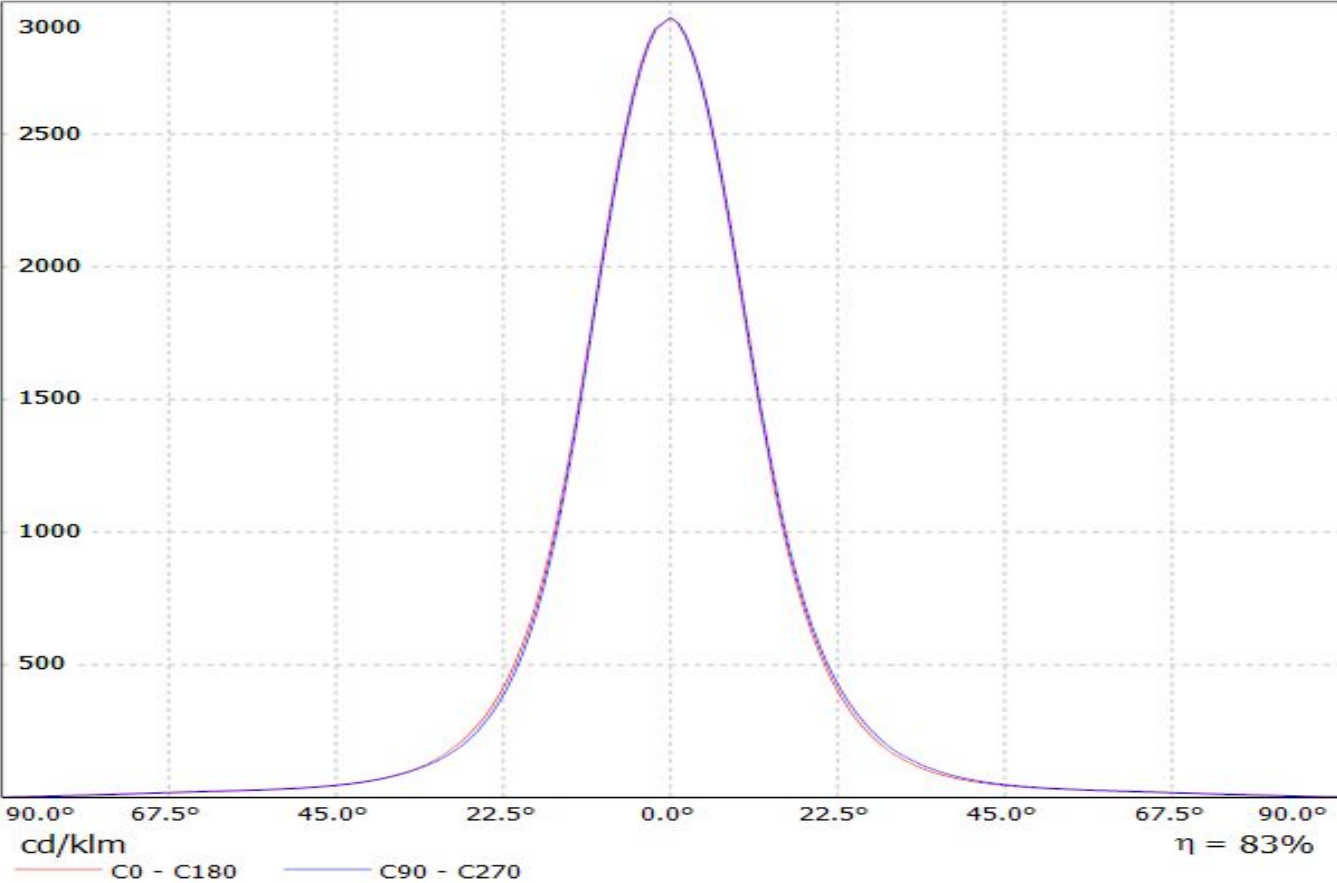
D

A

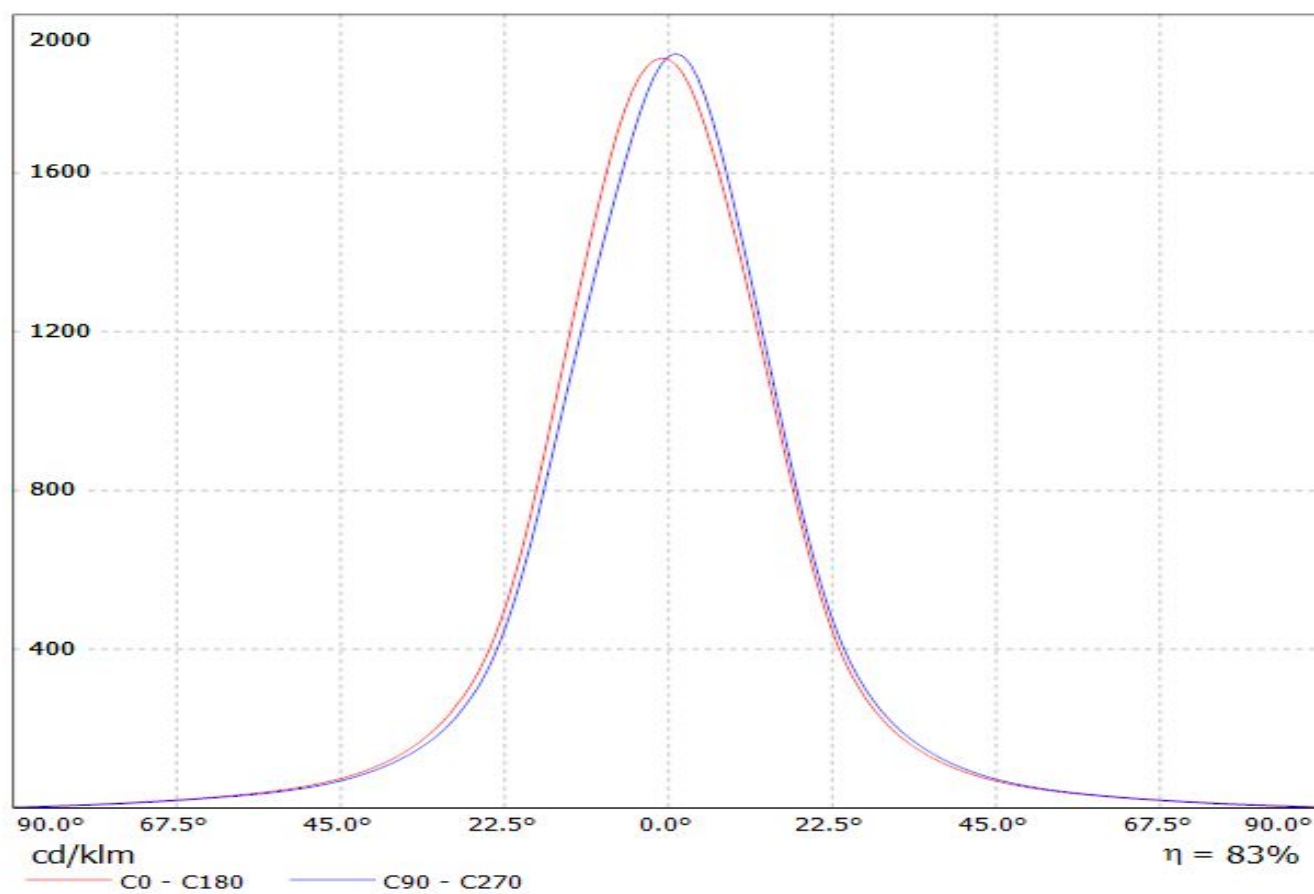
Luminaire: LEDiL Oy C11805_ANNA-40-6-S_(SEOUL_Z5M Eff.92.2%
Lamps: 1 x SEOUL Z5M (526.235lm@250mA)



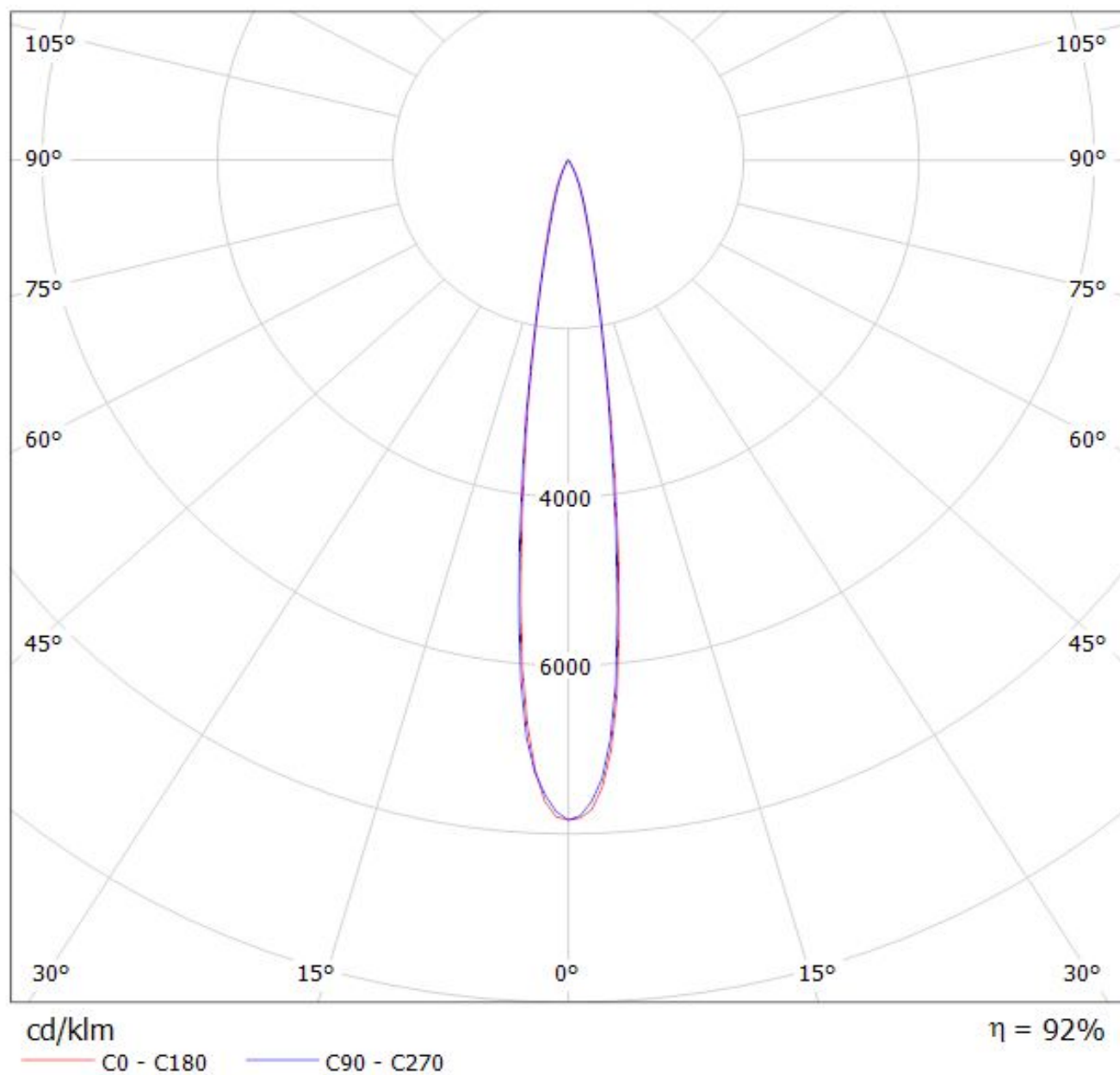
Luminaire: LEDiL Oy C11806_ANNA-40-6-M_(SEOUL_Z5M) Eff.83.2%
Lamps: 1 x SEOUL_Z5M (526.235lm@250mA)



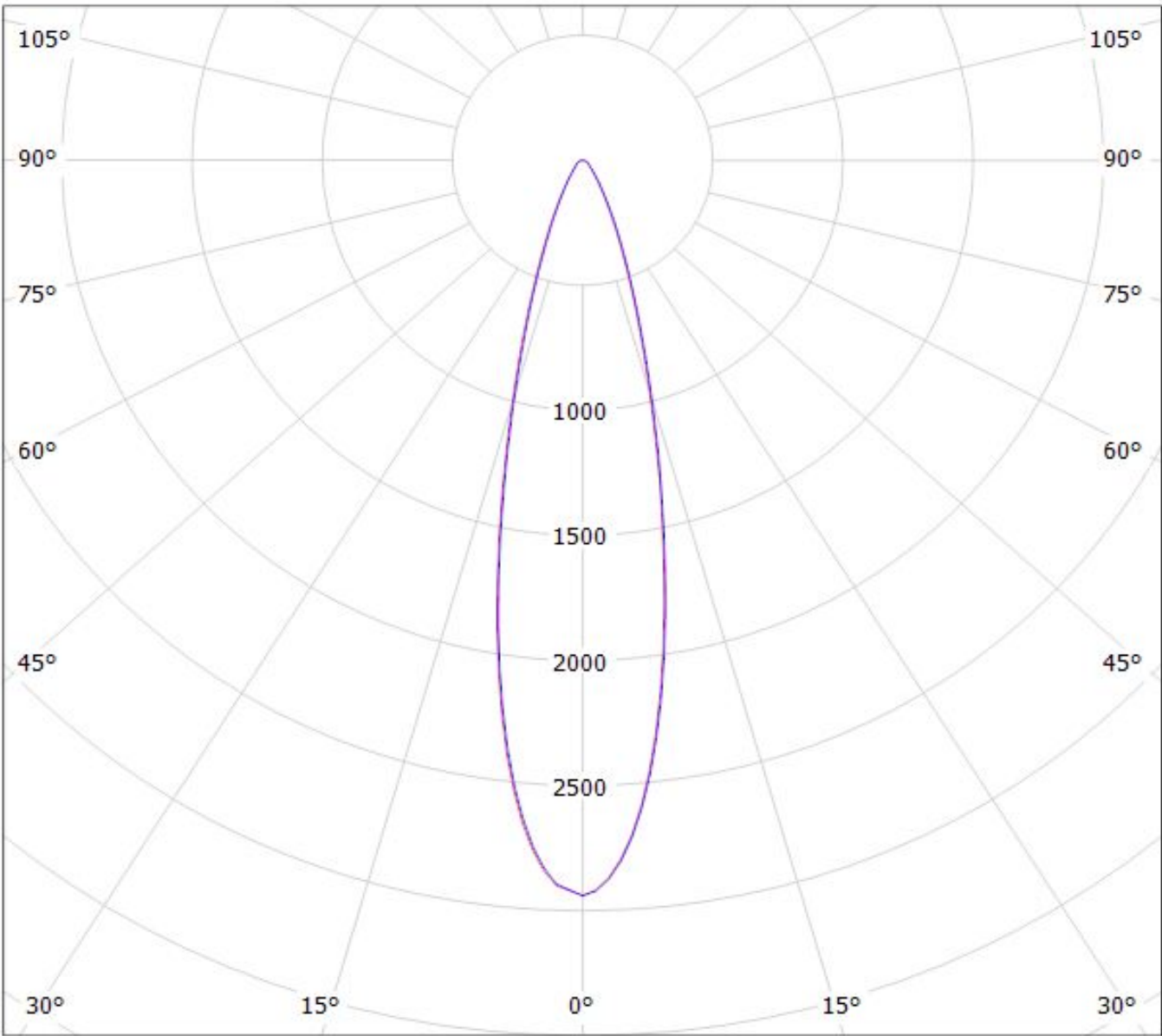
Luminaire: LEDiL Oy C11807_ANNA-40-6-W_(SEOUL_Z5M) Eff.82.6%
Lamps: 1 x SEOUL_Z5M (526.235lm@250mA)



Luminaire: LEDiL Oy C11805_ANNA-40-6-S_(SEOUL_Z5M Eff.92.2%
Lamps: 1 x SEOUL Z5M (526.235lm@250mA)



Luminaire: LEDiL Oy C11806_ANNA-40-6-M_(SEOUL_Z5M) Eff.83.2%
Lamps: 1 x SEOUL_Z5M (526.235lm@250mA)



cd/klm

$\eta = 83\%$

— C0 - C180 — C90 - C270

Luminaire: LEDiL Oy C11807_ANNA-40-6-W_(SEOUL_Z5M) Eff.82.6%
Lamps: 1 x SEOUL_Z5M (526.235lm@250mA)

