

ALUMINUM ELECTROLYTIC CAPACITORS

nichicon



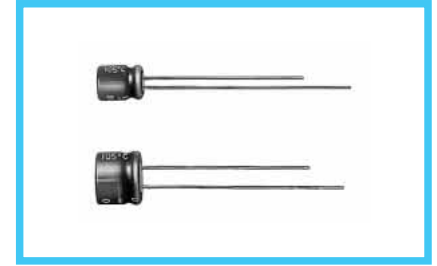
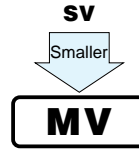
5mmL, Long Life Assurance

series



Long Life

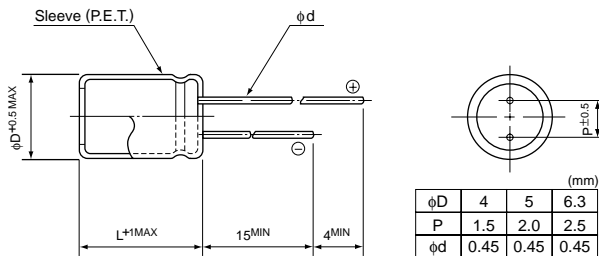
- Extended load life of 5000 hours at +105°C, with 5mm height.



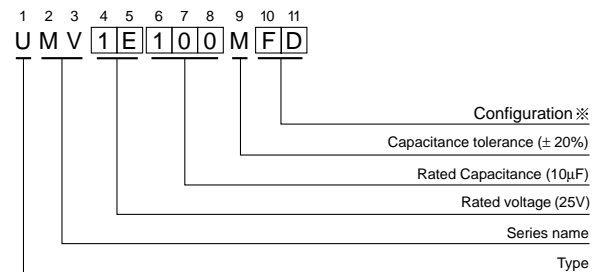
Specifications

Item	Performance Characteristics								
Category Temperature Range	-40 ~ +105°C								
Rated Voltage Range	4 ~ 50V								
Rated Capacitance Range	0.1 ~ 100μF								
Capacitance Tolerance	±20% at 120Hz, 20°C								
Leakage Current	After 2 minutes' application of rated voltage, leakage current is not more than 0.01CV or 3 (μA),whichever is greater.								
tan δ	Measurement frequency : 120Hz, Temperature : 20°C								
	Rated voltage (V)	4	6.3	10	16	25	35	50	
	tan δ (MAX.)	0.37	0.28	0.24	0.20	0.16	0.13	0.12	
Stability at Low Temperature	Measurement frequency : 120Hz								
	Rated voltage (V)		4	6.3	10	16	25	35	50
	Impedance ratio	Z-25°C / Z+20°C	8	4	3	2	2	2	2
	ZT / Z20 (MAX.)	Z-40°C / Z+20°C	14	10	7	5	3	3	3
Endurance	After 5000 hours' application of rated voltage at 105°C capacitors meet the characteristic requirements listed at right.				Capacitance change		Within ±30% of initial value		
					tan δ		300% or less of initial specified value		
					Leakage current		Initial specified value or less		
Shelf Life	After leaving capacitors under no load at 105°C for 1000 hours, they meet the specified value for endurance characteristics listed above.								
Marking	Printed with silver color letter on dark brown sleeve.								

Radial Lead Type



Type numbering system (Example : 25V 10μF)



※ Configuration

φ D	Pb-free leadwire Pb-free PET sleeve	Sn-Pb finished leadwire PVC sleeve (containing Pb)
4 ~ 6.3	FD	FH

※ Please contact to us if other configurations are required.

Dimensions

		V		4		6.3		10		16		25		35		50	
Cap.(μF)	Code	0G		0J		1A		1C		1E		1V		1H			
0.1	0R1															4×5	1.0
0.22	R22															4×5	2.6
0.33	R33															4×5	3.2
0.47	R47															4×5	3.8
1	010															4×5	6.2
2.2	2R2															4×5	11
3.3	3R3															4×5	14
4.7	4R7															4×5	19
10	100															5×5	30
22	220	4×5	22	4×5	22	5×5	27	5×5	30	6.3×5	38	6.3×5	42				
33	330	5×5	30	5×5	30	5×5	35	6.3×5	40	6.3×5	48						
47	470	5×5	36	5×5	36	6.3×5	46	6.3×5	50								
100	101	6.3×5	60	6.3×5	60											Case size	Rated ripple

Rated Ripple (mA rms) at 105°C 120Hz

Frequency coefficient of rated ripple current

Frequency	50 Hz	120 Hz	300 Hz	1 kHz	10 kHz ~
Coefficient	0.70	1.00	1.17	1.36	1.50

Please refer to page 19, 20, 21 about the formed or taped product spec.
Please refer to page 3 for the minimum order quantity.

CAT.8100T