

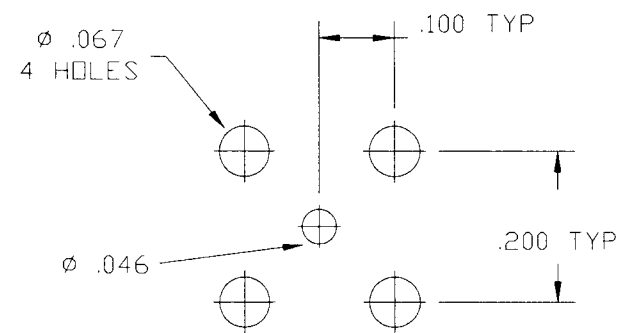
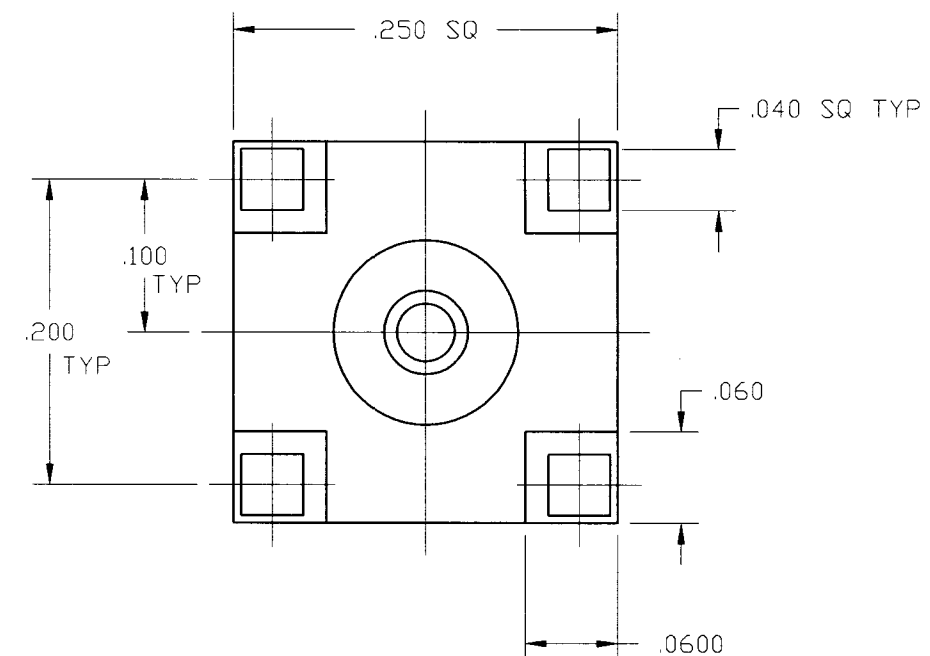
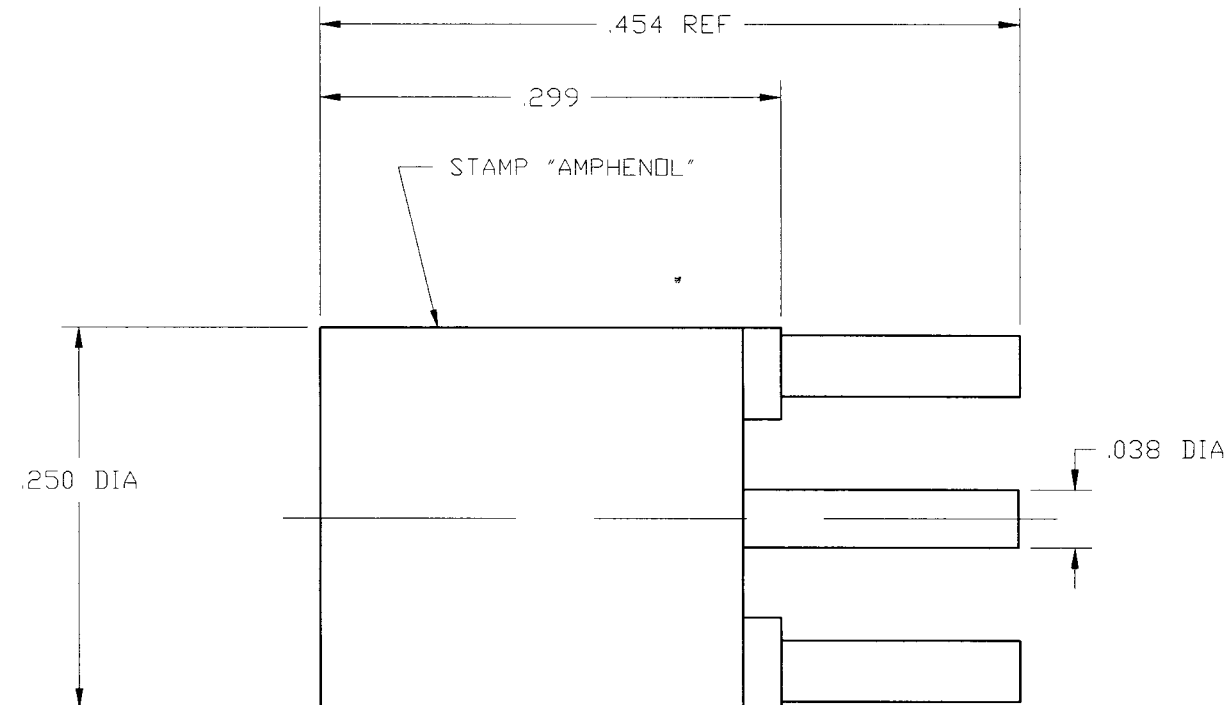
NOTES:

- MATERIALS OF CONSTRUCTION:  
 BODY & HOOD = BRASS, GOLD PLATED  
 FEMALE CONTACT = BERYLLIUM COPPER, GOLD PLATED  
 RETAINING RING = BERYLLIUM COPPER, NICKEL PLATED  
 INSULATOR = TFE, FLUOROCARBON
- DO NOT SCALE THIS DRAWING.

903-410P-53P

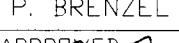
REVISIONS

DRAWING NO.	REV	DESCRIPTION	DATE	ECO	APPR
THIRD ANGLE PROJ. 		RELEASE TO MFG.			
	E	SEE SHEET 1	7/12/00	43433	CPM



RECOMMENDED MOUNTING  
HOLE DIMENSIONS

CUSTOMER OUTLINE  
DRAWING

UNLESS OTHERWISE SPECIFIED, DIMENSIONS ARE IN INCHES AND TOLERANCES ARE: 2 PLACE DECIMAL      3 PLACE DECIMAL      ANGLES ±.015 (0,381 mm)      ±.005 (0,127 mm)      ± 1°			DRAWN C. McGRATH		DATE 6/29/00		TITLE SLIDE-ON PLUG PC MOUNT		Amphenol Amphenol Corporation RF/Microwave Operations Danbury, Conn. U.S.A. 06810			
NOTICE - These drawings, specifications, or other data (1) are, and remain the property of Amphenol Corp. (2) must be returned upon request; and (3) are confidential and not to be disclosed to any person other than those to whom they are given by Amphenol Corp. The furnishing of these drawings, specifications, or other data by Amphenol Corp., or to any other person to anyone for any purpose is not to be regarded by implication or otherwise in any manner licensing, granting rights or permitting such holder or any other person to manufacture, use or sell any product, process or design, patented or otherwise, that may in any way be related to or disclosed by said drawings, specifications, or other data.			ENGINEER P. BRENZEL		DATE 6/29/00							
			APPROVED 		DATE 7/20/00							
CAD FILE H:\PETE\SMB\903\ASSY\410P53PC					CODE ID 74868		DWG SIZE B		DRAWING NO. 903-410P-53P		ISSUE E	