

PRODUCT NUMBER

20020111-XXXXXXLF

20020111-□□□□A□□LF

PITCH

C : 3.50 mm  
D : 3.81 mm  
G : 5.00 mm  
H : 5.08 mm

POLES

02: 2 POLES  
03: 3 POLES  
04: 4 POLES

24: 24 POLES



LF : DENOTED ROHS COMPATIBLE

1 : STANDARD PRODUCT  
W/ BOX PACKING

HOUSING CODE

CODE	COLOR	AVAILABILITY
1	GREEN(RAL 6018/T)	STANDARD
2	BLACK	ON REQUEST ONLY
3	GREY(RAL 7004/P)	ON REQUEST ONLY
4	BLUE(RAL 5015/A)	ON REQUEST ONLY

PROPERTY TABLE

FCI SERIES NAME		06-350	06-381	06-500	06-508
PITCH (mm)		3.50	3.81	5.00	5.08
VOLTAGE RATING (VAC)		300	300	300	300
CURRENT RATING (A)	cULus	10	10	12	12
	VDE	10.5	10.5	NA	NA
WITHSTANDING VOLTAGE (kV)	cULus	1.6	1.6	1.6	1.6
	VDE	2.5	2.5	NA	NA
OPERATING TEMP. (°C)		-40~+115	-40~+115	-40~+115	-40~+115
SOLDERING TEMP. (°C)		250±10 (5 sec.)	250±10 (5 sec.)	250±10 (5 sec.)	250±10 (5 sec.)
POLES AVAILABLE		02~24	02~24	02~24	02~24
SAFETY CERTIFICATE					

## NOTES:

## 1. MATERIALS

1-1 HOUSING: THERMALPLASTIC RESIN, UL 94V-0 RATED.

1-2 TERMINAL: COPPER ALLOY, TIN PLATED.

## 2. PRODUCT SPECIFICATION REFER TO FCI GS-12-625.

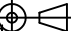
## 3. BOXED PACKAGING,

DETAILED PRODUCT PACKING SPECIFICATION REFER TO FCI GS-14-1394.

## 4. FCI, SAFETY CERTIFICATE LOGO AND SERIES NAME TO BE SHOWN ON PRODUCT SURFACE.

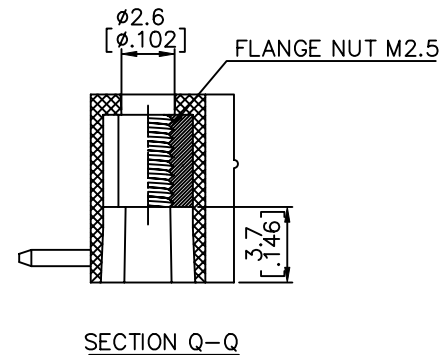
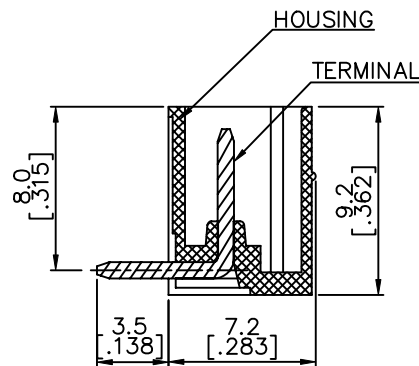
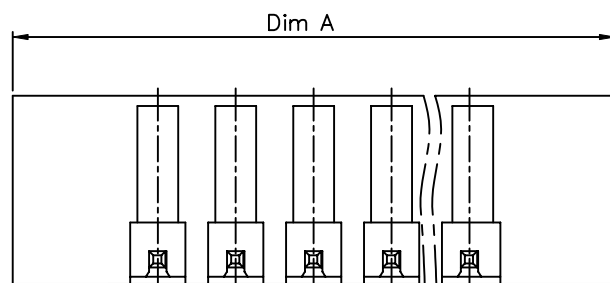
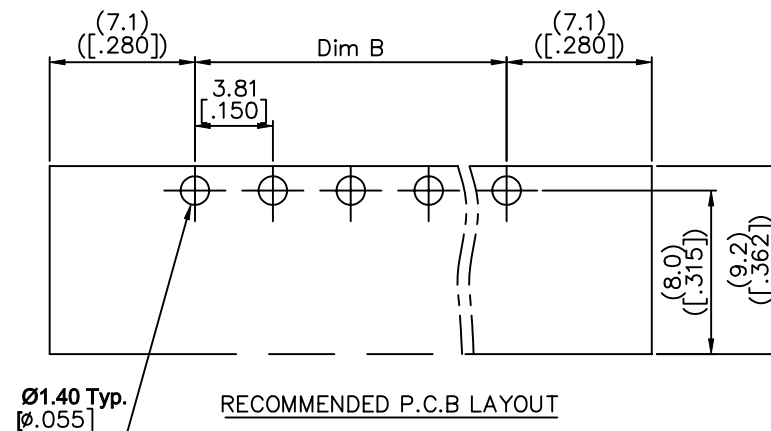
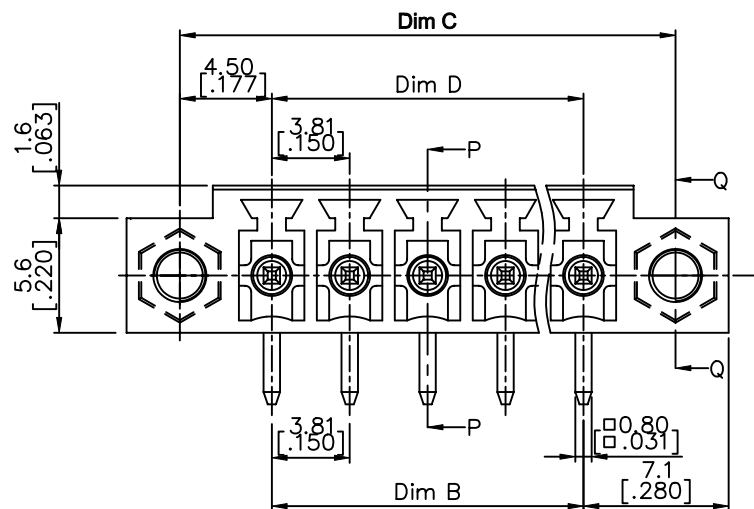
## 5. THE PRODUCTS WHERE THE PART NUMBER END IN "LF" MEET THE EUROPEAN UNION DIRECTIVE AND OTHER COUNTRY REGULATIONS AS DESCRIBED IN GS-22-008.

## 6. RECOMENDED SOLDERING PROCESS BY WAVE SOLDER.

mat'l. code				surface ASME Y14.5		tolerance ASME Y14.5		projection		product family			
										TERMINAL BLOCK			
ltr		ecn no		dr		date		tolerances unless otherwise specified		title			
A		T10-0062		WL		050710		angles		X.±0.5[.020]		TERMINAL BLOCK PLUGGABLE, SOCKET, SIGNAL, R/A W/FLANGE	
B		T10-0155		WL		093010		X.X±0.3[.012]					
C		T10-0187		WL		121410		X.XX±0.1[.004]					
D		T11-0006		WL		012611		dr		WENDY CHEN		042610	
E		T11-0013		WL		040811		enr		JASON HSU		042610	
F		T-004860		WL		080411		chr		GARY HSIEH		042610	
								appd		JOSEPH HSIA		042610	
sheet index		revision sheet		F		F		F		F		F	
				1		2		3		4		5	



PRODUCT NUMBER	SERIES NAME	PITCH
20020111-DXXXXXXLF	06-381	3.81 mm



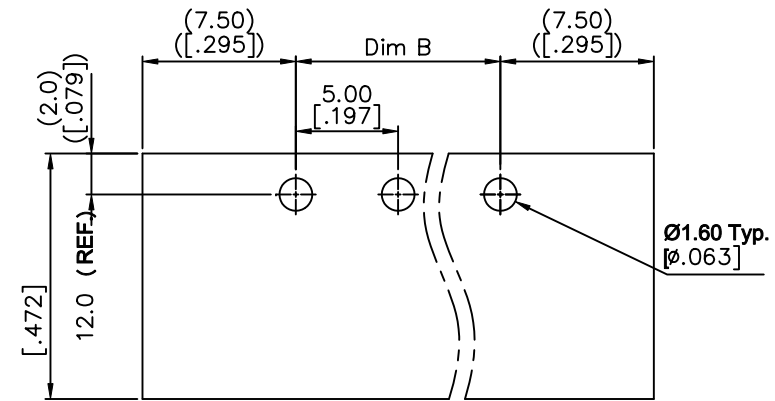
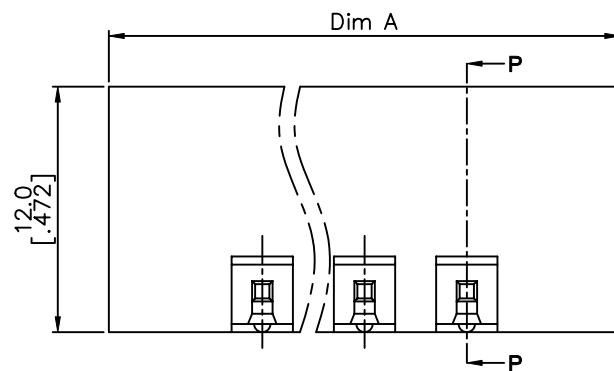
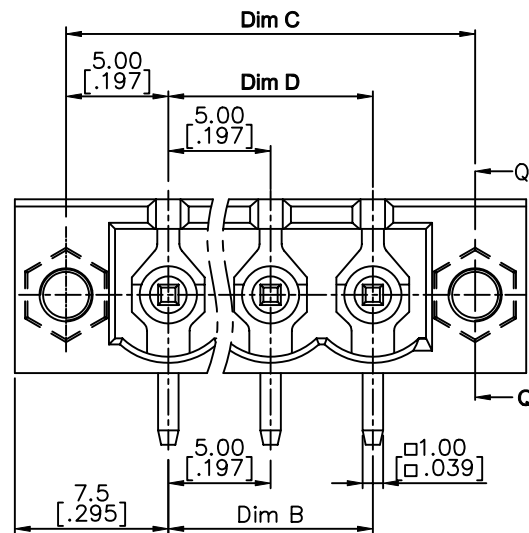
N= Number of poles

Dim A	$(N-1) \times 3.81 [.150] + 14.2 [.559]$
Dim B	$(N-1) \times 3.81 [.150]$
Dim C	$(N-1) \times 3.81 [.150] + 9.0 [.354]$
Dim D	$(N-1) \times 3.81 [.150]$

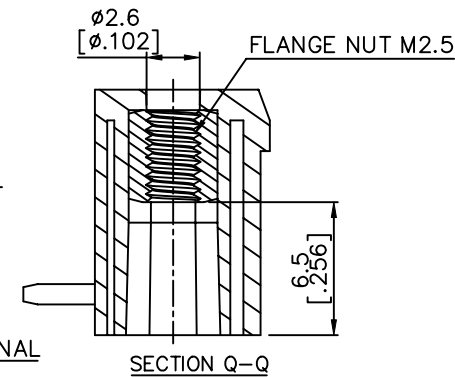
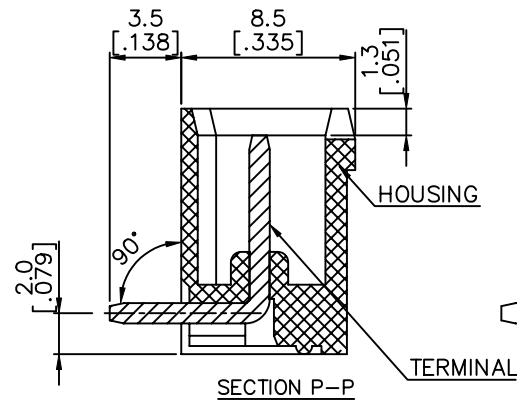
Poles	Tolerance
2p-6p	$\pm 0.15 [.006]$
7p-12p	$\pm 0.20 [.008]$
13p-16p	$\pm 0.25 [.010]$
17p-24p	$\pm 0.30 [.012]$

mat'l. code	surface ASME Y14.5	tolerance ASME Y14.5	projection	product family
ltr	ecn no	dr	date	TERMINAL BLOCK
F				title
				TERMINAL BLOCK
				PLUGGABLE, SOCKET, SIGNAL, R/A
				W/FLANGE
				dwg no
				sheet 3 of 5
				size
				A4
				type
				CUSTOMER Drawing
sheet index	revision	sheet		

PRODUCT NUMBER	SERIES NAME	PITCH
20020111-GXXXXXXLF	06-500	5.00 mm



## RECOMMENDED PCB LAYOUT



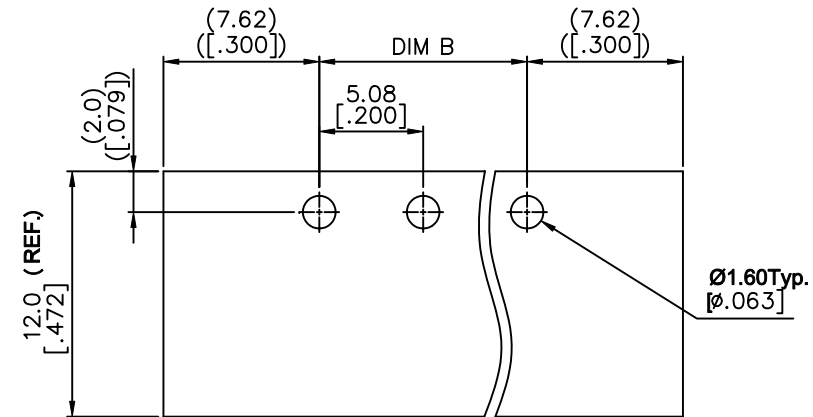
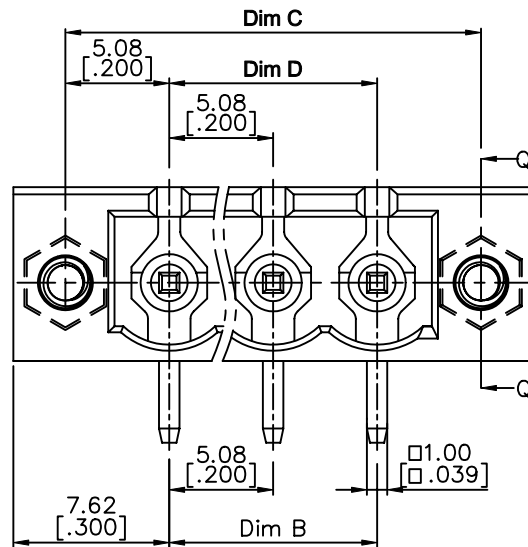
N= NUMBER OF POLES

Dim A	$(N+2)*5.0[.197]$
Dim B	$(N-1)*5.0[.197]$
Dim C	$(N+1)*5.0[.197]$
Dim D	$(N-1)*5.0[.197]$

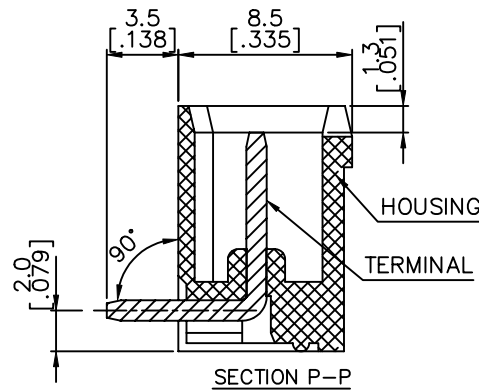
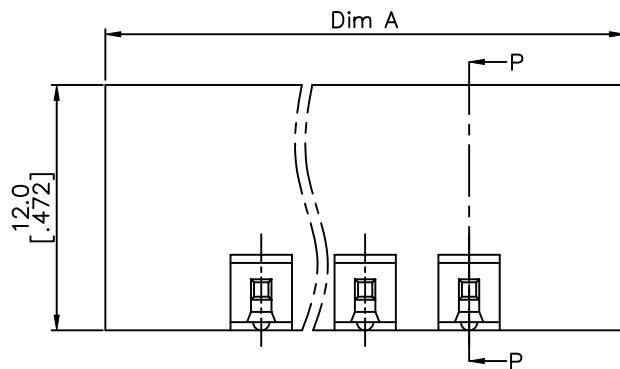
Poles	Tolerance
2P-6P	$\pm 0.15[.006]$
7P-12P	$\pm 0.20[.008]$
13P-18P	$\pm 0.25[.010]$
19P-24P	$\pm 0.30[.012]$

[illegible]

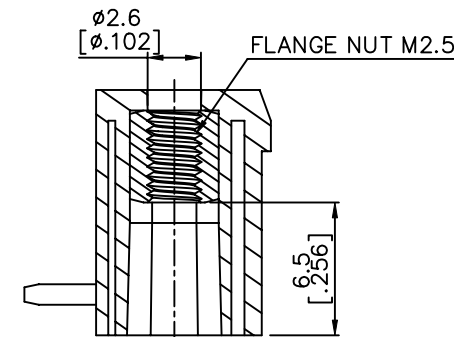
PRODUCT NUMBER	SERIES NAME	PITCH
20020111-HXXXXXXLF	06-508	5.08 mm



RECOMMENDED PCB LAYOUT



SECTION P-P



SECTION Q-Q

N= NUMBER OF CONCATS

Dim A	(N+2)*5.08[.200]
Dim B	(N-1)*5.08[.200]
Dim C	(N+1)*5.08[.200]
Dim D	(N-1)*5.08[.200]

Poles	Tolerance
2P-6P	±0.15[.006]
7P-12P	±0.20[.008]
13P-18P	±0.30[.012]
19P-24P	±0.40[.016]

mat'l. code	surface ASME Y14.5	tolerance ASME Y14.5	projection MM INCH	product family TERMINAL BLOCK
litr	ecn no	dr	date	title TERMINAL BLOCK PLUGGABLE, SOCKET, SIGNAL, R/A W/FLANGE
F				dwg no 20020111
				sheet 5 of 5
				size A4
				type CUSTOMER Drawing
sheet index	revision sheet			