

Unique, innovative, versatile enclosure made of ABS or polycarbonate UL 94 V0

Color	Light gray, similar to RAL 7035, or graphite gray, similar to RAL 7024; special colors on request
Protection class	IP 66/IP 67 DIN EN 60529; higher level of protection on request
Enclosure material	ABS or PC UL 94 V0, foamed seal; for details, please see Technical Information

- 11 sizes, 66 standard combinations possible
- 2 material types: ABS or PC UL 94 V0, flame-resistant and self-extinguishing
- Captive lid with membrane keypad area, available in 2 variants: opaque or crystal-clear
- Innovative, patented, hinged quick-release catch technology: open with a screwdriver, close by hand
- Elegant design, hinged quick-release catches available in different colors (red, green, yellow, blue, light gray, graphite gray)
- Mounting space for rectangular front panels and rectangular, grooved PCBs
- Excellent recyclability because of mono-material plastics without injection-molded metal parts
- Definition of the hinged side by means of blanking plugs (available as accessory)
- Comprehensive range of accessories
- Terminals and mounting on request

## Application example of our comprehensive range of services for Bocube

### Mechanical processing

- Milling, drilling, countersinking, thread cutting, punching
- Ultrasonic welding of individual mounting points

### Mounting work

- Mounting of cable glands, battery compartments
- Mounting of threaded bushings, bolts and conductive seals

### Glueing work

- Insertion using supplied components, wiring

### Soldering and assembly work



This is only a small selection of our comprehensive range of services, with which we manufacture individual products of excellent quality. You will find more information in the introduction to our "the red book" catalog.

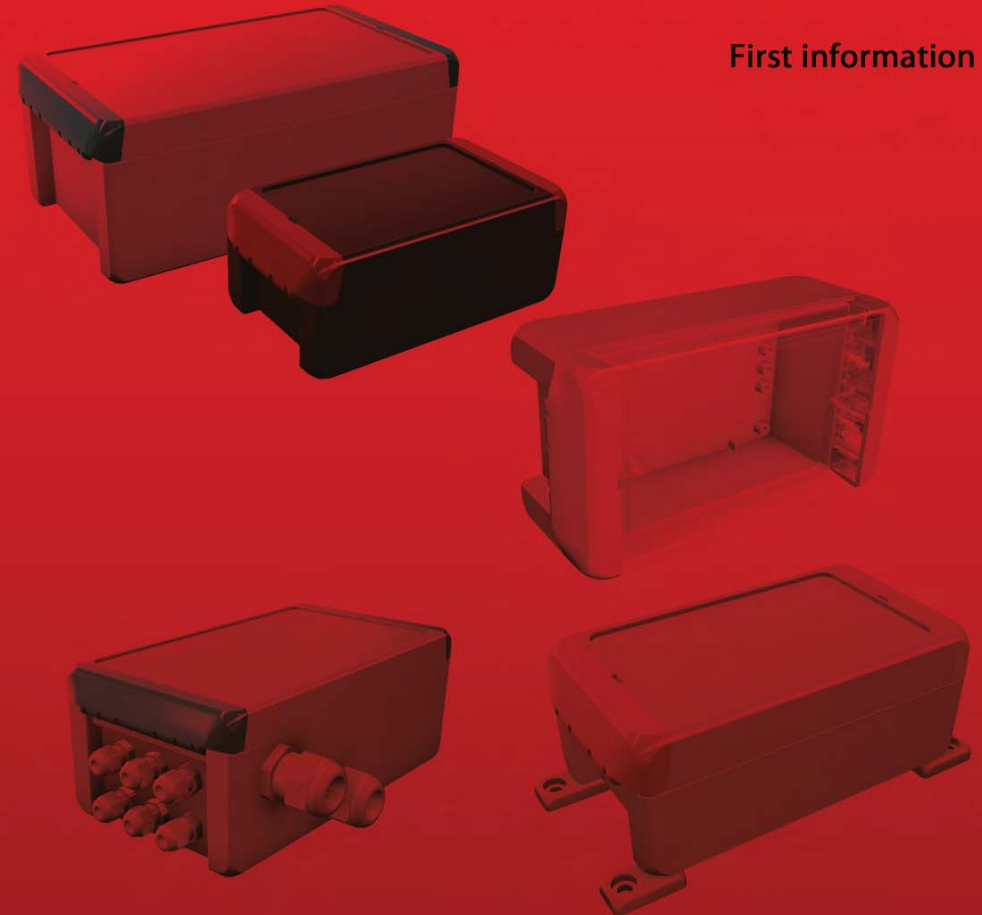
Your local contact:

Bopla Gehäuse Systeme GmbH  
Borsigstraße 17-25  
D-32257 Bünde  
Telephone +49 (0) 5223-969-0  
Fax +49 (0) 5223-969-100  
info@bopla.de  
www.bopla.de

**Phoenix Mecano Inc.**  
7330 Executive Way  
Frederick, Maryland 21704  
301-696-9411  
301-696-9494, Fax  
RBinfo@pm-usa.com  
www.rose-bopla.com

# BOCUBE

First information





In the lid the enclosures have an area recessed by 2 mm for the mounting of membrane keypads (exception: B 080805, 0,5 mm).



By using the hinged quick-release catch, the enclosures can easily be closed by hand – use a standard screwdriver to open (size 3).



Instead of the hinged quick-release catch, the enclosures can be screwed – suitable screws are available as accessories and are concealed by the hinged catch.



A lead seal can be fitted and protects against unauthorized access. We can supply lead seals on request.



Colored catches can be matched to the customer's designs.



The wall brackets can be used for all Bocube sizes. They are screwed to the drill holes in the base of enclosure and are available in both enclosure colors.



The hinged quick-release catch ensures that the lid cannot be lost.



With the hinged quick-release catch, the lid can be opened to the left or right, as required. This simplifies mounting, and allows access to the electronics even during later use.



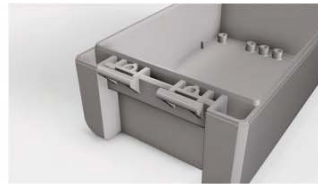
The blanking plugs allow the hinged side to be selected as required.



The Bocube with a PC UL 94 V0 crystal-clear lid is ideal for use as a display enclosure because it provides a permanent view of the front panel.



Rectangular front panels can be mounted in the base by using distance bolts.



Bocube is a mono-material plastic enclosure, so it is especially suitable for recycling.



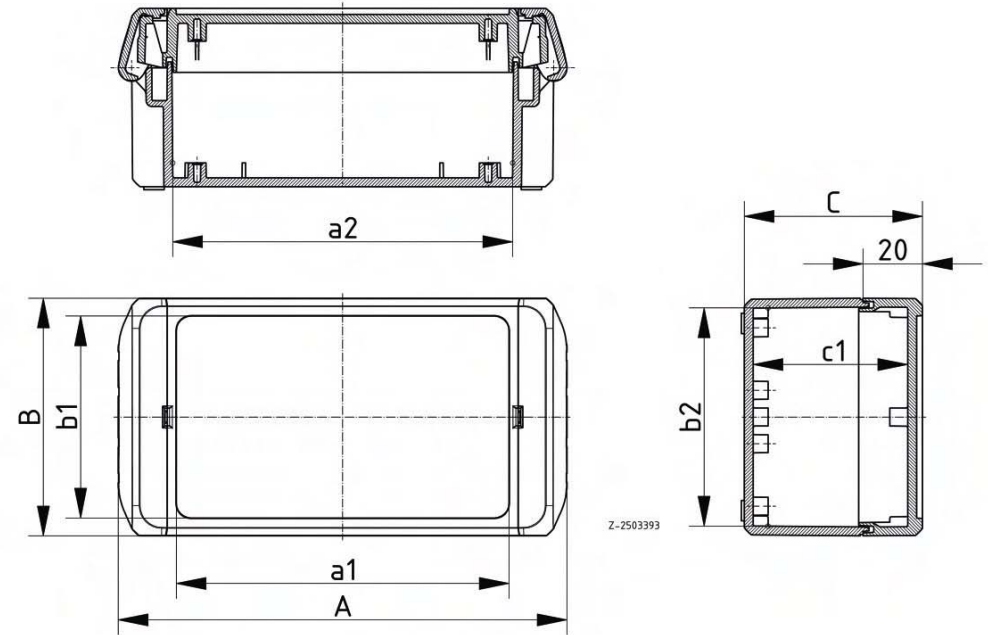
There are very few parts, so this series of enclosures is very easy to assemble.



Bocube has a rectangular mounting space for grooved PCBs and rectangular mounting panels. These can be mounted in the lid and the base.



Large areas guarantee enough space for the mounting of cable glands, D-sub-connectors, etc.



Model	external dimensions					internal dimensions		
	A	B	C	a1	b1	a2	b2	c1
B-080805	89	80	47	50	68	52,6	73,6	40,5
B-100806	113	80	60	74	68	76,4	73,4	52
B-100809	113	80	90	74	68	75,9	72,9	82
B-140806	151	80	60	112	68	114,4	73,4	52
B-140809	151	80	90	112	68	113,9	72,9	82
B-141306	151	125	60	112	113	114,4	118,4	52
B-141309	151	125	90	112	113	113,9	117,9	82
B-221306	231	125	60	192	113	194,4	118,4	52
B-221309	231	125	90	192	113	194,1	117,9	82
B-261706	271	170	60	232	158	234,4	163,4	51,5
B-261709	271	170	90	232	158	234,1	163,1	81,5