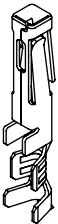


ALL DIMENSIONS ARE REFERENCE
(SEE XC-169-XX-XX-X-XX FOR CONTROLLING PRINT)

DO NOT
SCALE FROM
THIS PRINT



CC69X-XXXX-01-X-XX

SUPPLIED
-L: LOOSE
-R: REEL

MATERIAL SPECIFICATION
-SP: STANDARD POWER
* -HP: HIGH POWER

LEAD STYLE
-2024 (20-24 AWG)
-1620 (16-20 AWG)
-2426 (24-26 AWG) (PTFE)

PLATING
-T: MATTE TIN

OPTION
(INSULATION THICKNESS)
-01

(SEE PP-C-169-XX-XX-X FOR PLATING INSTRUCTIONS)
* = EXISTING CUSTOMERS ONLY AS OF REV P

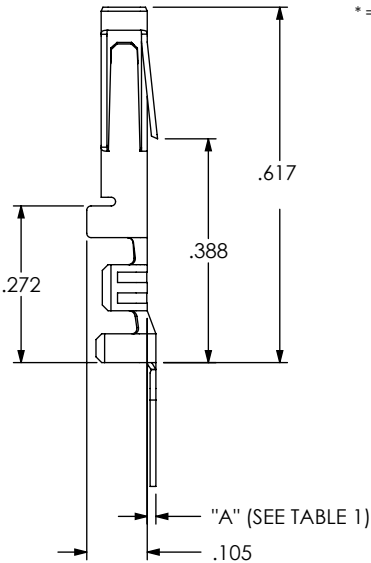
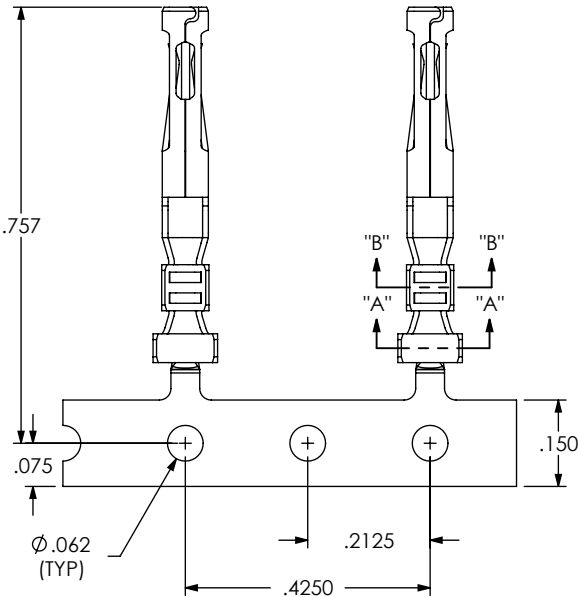
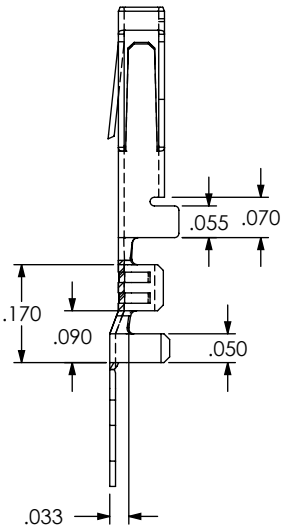
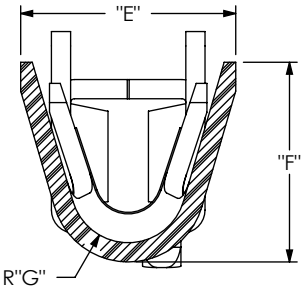
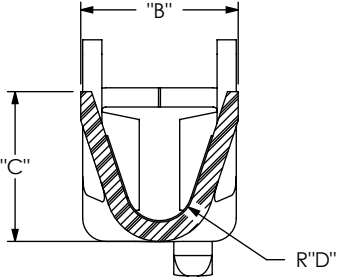


FIG 1
(CC69X-XXXX-01-X-XX SHOWN)



SECTION "A"-"A"
SCALE 10 : 1



SECTION "B"-"B"
SCALE 10 : 1

- NOTES:
1. PLATED XC-169 PARTS TO BE PULLED, PLATING OPTION CONFIRMED, POSITIONED AS SHOWN ON SAMTEC REEL WITH VIEWPORTS, LABELED CC69R WITH APPROPRIATE PLATING CALLOUT AND LABEL PLACED AS SHOWN.
 2. MAXIMUM NO OF SPLICES PER REEL: 2.
 3. SPLICES ARE NOT TO BE CONNECTED.
 4. NUMBER OF SPLICES TO BE MARKED ON EACH REEL.
 5. REELED PARTS TO BE INTERLEAVED WITH PAPER BETWEEN EACH LAYER OF PARTS.
 6. ALLOWABLE INTERLEAF SPLICES PER REEL: 3.
 7. SECURELY CONNECT INTERLEAF SPLICE.
 8. OUTER WRAP SHALL RECEIVE PROTECTIVE REEL BAND PER BELOW: RB-24-1.00-P.
 9. DUE TO PLATING REQUIREMENTS CONTACT SAMPLES MAY BE REMOVED INTERMITTINGLY FROM THE CARRIER RESULTING IN SMALL GAPS BUT DOES NOT AFFECT FINAL COUNT.
 10. QTY PER REEL: 4,000 +100/-0 PCS.

TABLE 1									
STYLE	"A"	"B"	"C"	"D"	"E"	"F"	"G"	"H"	"J"
-2024	.015	.082	.078	.018	.112	.104	.030	.005	30
-1620	.025	.110	.115	.025	.184	.168	.055	.005	30
-2426	.015	.082	.078	.018	.080	.067	.020	.005	30

UNLESS OTHERWISE SPECIFIED,
DIMENSIONS ARE IN INCHES.
TOLERANCES ARE:
DECIMALS ANGLES

PROPRIETARY NOTE
THIS DOCUMENT CONTAINS INFORMATION
CONFIDENTIAL AND PROPRIETARY TO
SAMTEC, INC. AND SHALL NOT BE REPRODUCED
OR TRANSFERRED TO OTHER DOCUMENTS OR
DISCLOSED TO OTHERS OR USED FOR ANY
PURPOSE OTHER THAN THAT WHICH IT WAS
OBTAINED WITHOUT THE EXPRESSED WRITTEN
CONSENT OF SAMTEC, INC.

samtec

520 PARK EAST BLVD, NEW ALBANY, IN 47150
PHONE: 812-944-6733 FAX: 812-948-5047
e-Mail: info@SAMTEC.com code 55322

MATERIAL: DO NOT SCALE DRAWING SHEET SCALE: 3:1
-SP: PHOS BRONZE
-HP: HIGH COPPER ALLOY
THICKNESS: .0100

DESCRIPTION:
.165 IPBD CONTACT
DWG. NO.
CC69X-XXXX-01-X-XX
BY: BRATCHER 10/7/04 SHEET 1 OF 2

