

THA-227 Grip Handle Latch

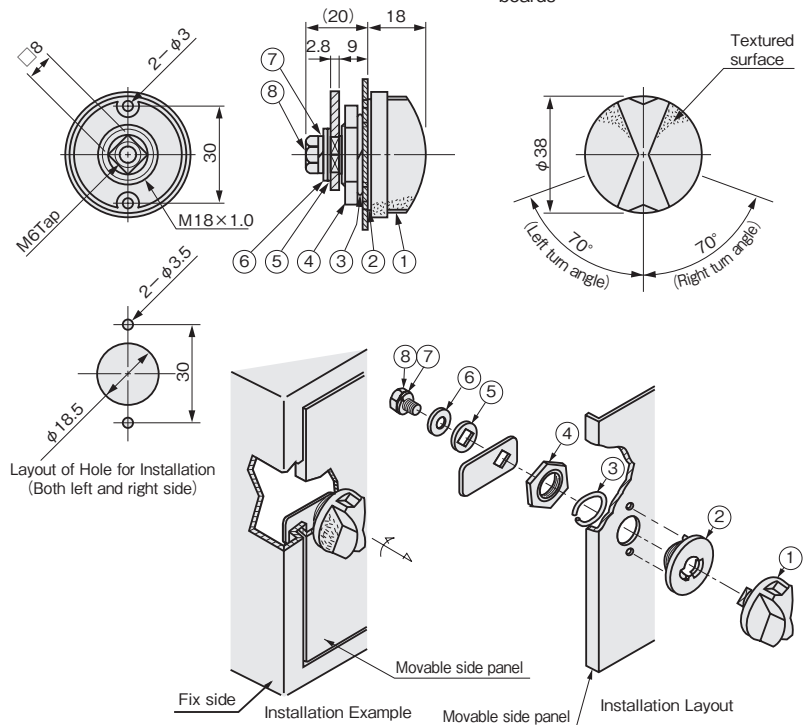


Characteristic

The handle contains a dial shaped grip.
The simple appearance and two-tone surface treatment enhances the appearance of the device.

Application

Doors for small devices /
Controller boxes /
Distribution panels / Distribution boards



Model No.	Net Weight (g)	Code No.
THA-227	88	3987

Parts List

No.	Part Name	Material	Finish	Quantity
1	Handle	ZDC	DCr	1
2	Flange		Cr	1
3	Ring Washer	SW	Zn	1
4	Hexagon Nut	ZDC		1
5	Square Hole Washer	SPCC		1
6	Washer			1
7	Spring Washer	S		1
8	Hexagon Bolt			1

THA-428 Grip Handle Latch

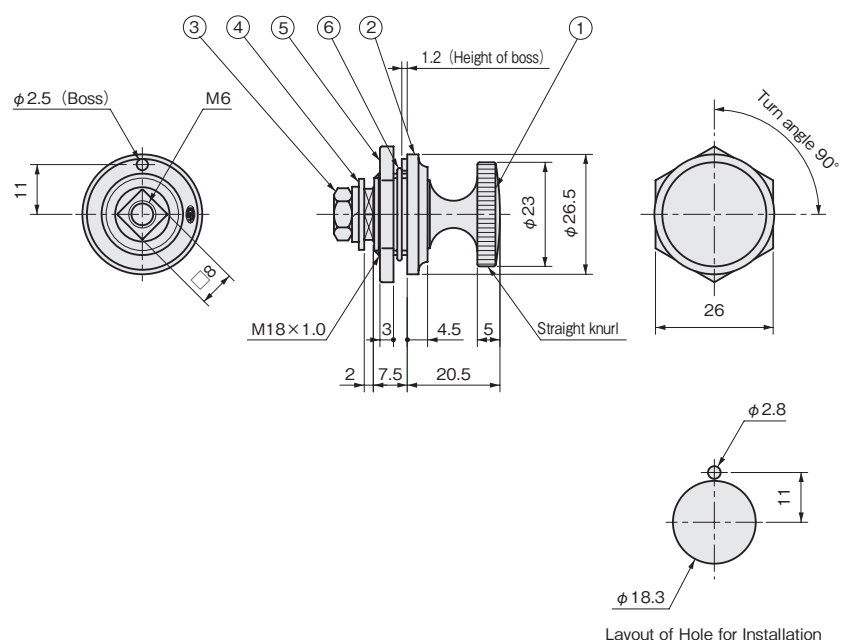


Characteristic

A handle with less extrusion on the fixing surface.

Application

Measuring instruments /
Doors for small equipment



Model No.	Net Weight (g)	Code No.
THA-428	49	3938

Parts List

No.	Part Name	Material	Finish	Quantity
1	Handle	ZDC	Cr	1
2	Flange			1
3	Cross Hole Head Hexagon Bolt with Washer	S	Zn	1
4	Flat Washer	SPCC		1
5	Set Nut	ZDC		1
6	Ring Washer	SUS304		1