



ECN : PAGE : 1/5

1.8mm Round Subminiature "Z-Bend" Lead LEDs

MODEL NO : 91-21SURC/S530-A4

■ Features :

- Package in 12mm tape on 7" diameter reels.
- Compatible with automatic placement equipment.
- Compatible with infrared and vapor phase reflow solder process.
- I.C. compatible.
- EIA std package.
- Mono-color type.

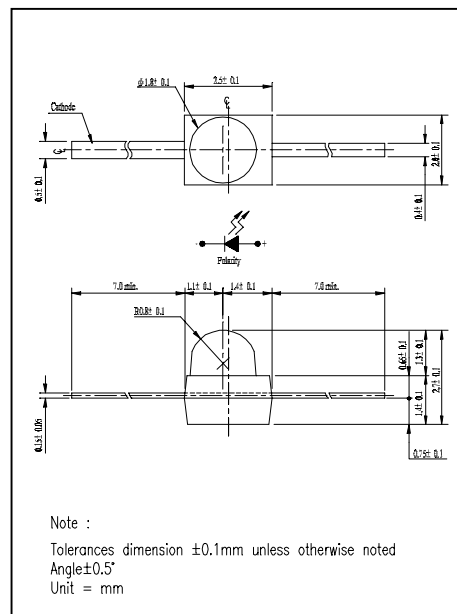
■ **Description :**

- The 91-21 SMD taping is much smaller than leaded components. Thusenable smaller board size.Higher packing density. Reduced storage space and finally smaller equipment to be obtained.
- Besides, light weight makes them ideal for miniature application, ect.
- Furthermore by automation assembly machines the accuracy is anticipated.

■ Applications :

- Small indicator for outdoor applications.
- Flat backlight for LCD, switch and symbol.
- Indicator and backlight in office equipment.
- Indicator and backlight for battery driven equipment.
- Indicator and backlight for audio and video equipment.
- Automotive : backlighting in dashboard and switch.
- Telecommunication : indicator and backlighting in telephone and fax.
- General use.

Package Dimensions :



PART NO.	CHIP		Lens Color
	Material	Emitted Color	
91-21SURC/S530-A4/TR10	AlGaInP	Hyper Red	Water Clear

OFFICE : NO. 25,Lane 76,Sec.3, Chung Yang Rd., Tucheng 236, Taipei, Taiwan, R.O.C.

TEL : 886-2-2267-2000,2267-9936

FAX : 886-2-2267-6244,22676189,22676306

<http://www.everlight.com>



EVERLIGHT ELECTRONICS CO.,LTD.

DEVICE NUMBER : DLE-912-289 REV : 1.0

ECN : PAGE : 3/5

1.8mm Round Subminiature "Z-Bend" Lead LEDs

MODEL NO : 91-21SURC/S530-A4

■ Absolute Maximum Ratings at Ta = 25°C

Parameter	Symbol	Rating	Unit
Reverse Voltage	V _r	5	V
Forward Current	I _f	25	mA
Operating Temperature	T _{opr}	-40 ~ +85	°C
Storage Temperature	T _{stg}	-40 ~ +100	°C
Soldering Temperature	T _{sol}	260 ± 5 for 5 sec	°C
Electrostatic Discharge	ESD	2000	V
Power Dissipation	P _d	60	mW
Peak Forward Current(Duty 1/10 @ 1KHZ)	I _f (Peak)	160	mA

■ Electronic Optical Characteristics :

Parameter	Symbol	MIN.	TYP.	MAX.	Unit	Condition
Luminous intensity	I _v	----	51	----		I _f = 2mA
Luminous intensity	I _v	634	846	----	mcd	I _f = 20mA
Viewing Angle	2 θ 1/2	----	25	----	deg	
Peak Wavelength	λ _p	----	632	----	nm	
Dominant Wavelength	λ _d	----	624	----	nm	
Spectrum Radiation Bandwidth	△ λ	----	20	----	nm	
Forward Voltage	V _f	----	2.0	2.4	V	V _r =5V
Reverse Current	I _r	----	----	10	μ A	



EVERLIGHT ELECTRONICS CO.,LTD.

DEVICE NUMBER : DLE-912-289 REV : 1.0

ECN : PAGE : 5/5

1.8mm Round Subminiature "Z-Bend" Lead LEDs

MODEL NO : 91-21SURC/S530-A4

Typical Electro-Optical Characteristic Curves

