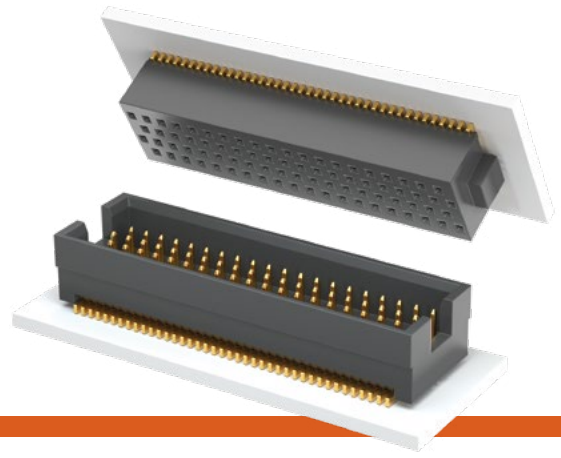


# QUAD ROW SMT TERMINAL & SOCKET

(1.27 mm) .050" PITCH • TOLC/SOLC SERIES



**TOLC**  
Mates:  
SOLC

**SOLC**  
Mates:  
TOLC

## SPECIFICATIONS

**Insulator Material:**  
Black Liquid Crystal Polymer  
**Contact Material:**  
Phosphor Bronze  
**Plating:**  
Au over 50 μm (1.27 μm) Ni  
**Current Rating:**  
2.4 A per pin  
(6 adjacent pins powered)  
**Operating Temp Range:**  
-55 °C to +125 °C  
**Insertion Depth (SOLC):**  
(1.68 mm) .066" to  
(3.61 mm) .142" with  
(0.38 mm) .015" wipe  
**Max Cycles (SOLC):**  
100+

## PROCESSING

**Lead-Free Solderable:**  
Yes  
**SMT Lead Coplanarity:**  
(0.10 mm) .004" max (05-35)  
(0.15 mm) .006" max (40-50)\*  
\*(.004" stencil solution  
may be available; contact  
ipg@samtec.com)

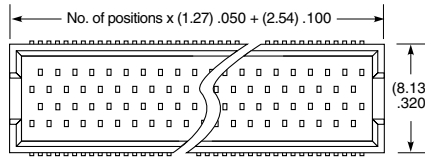
<b>TOLC</b>	<b>1</b>	<b>NO. PINS PER ROW</b>	<b>LEAD STYLE</b>	<b>PLATING OPTION</b>	<b>Q</b>	<b>OTHER OPTION</b>
-------------	----------	-------------------------	-------------------	-----------------------	----------	---------------------

05, 10, 15, 20, 25,  
30, 35, 40, 45, 50  
(Standard Sizes)

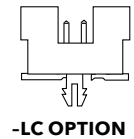
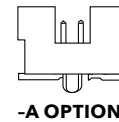
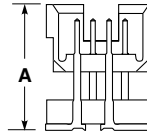
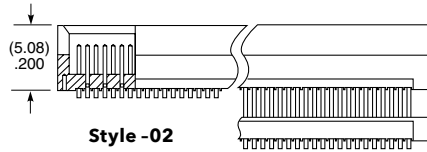
Specify  
LEAD  
STYLE  
from  
chart

**-F**  
= Gold flash  
on contact,  
Gold flash  
on tail  
**-L**  
= 10 μm  
(0.25 μm)  
Gold on  
contact,  
Gold flash  
on tail

**-A**  
= Alignment Pin  
(N/A with -LC)  
**-LC**  
= Locking Clip  
(N/A with -A)  
(Manual  
placement required)  
**-K**  
= (9.00 mm) .354" DIA  
Polyimide film  
Pick & Place Pad



LEAD STYLE	A	MATED HEIGHT
-02	(5.59) .220	(6.35) .250
-12	(7.24) .285	(8.00) .315
-22	(9.25) .364	(10.00) .394
-32	(11.23) .442	(12.00) .472

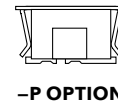
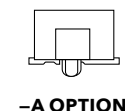
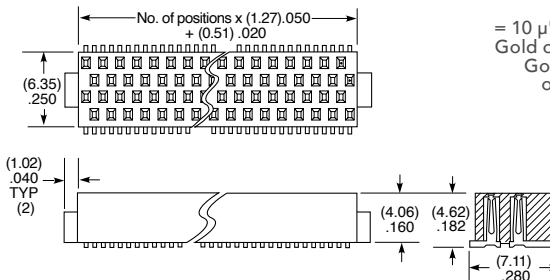


<b>SOLC</b>	<b>1</b>	<b>NO. PINS PER ROW</b>	<b>02</b>	<b>PLATING OPTION</b>	<b>Q</b>	<b>OTHER OPTION</b>
-------------	----------	-------------------------	-----------	-----------------------	----------	---------------------

05, 10, 15, 20, 25,  
30, 35, 40, 45, 50  
(Standard Sizes)

**-F**  
= Gold flash  
on contact,  
Gold flash  
on tail  
**-L**  
= 10 μm (0.25 μm)  
Gold on contact,  
Gold flash  
on tail

**-A**  
= Alignment Pin  
(N/A with -LC)  
**-LC**  
= Locking Clip  
(N/A with -A)  
(Manual  
placement required)  
**-K**  
= (7.00 mm) .276" DIA  
Polyimide film  
Pick & Place Pad  
**-P**  
= Pick & Place Pad  
**-TR**  
= Tape & Reel  
**-FR**  
= Full Reel Tape & Reel  
(must order max.  
quantity per reel;  
contact Samtec for  
quantity breaks)



## ALSO AVAILABLE

MOQ Required

Other sizes  
Other platings

**Note:**  
Some lengths, styles and  
options are non-standard,  
non-returnable.