

### SPECIFICATIONS

**Material:** HEXSEALS: Silicone rubber conforms to A-A-59588 Class III, GR 60 unless otherwise specified.

**Mounting Nut:** HEXSEALS: Brass, nickel-plated (unless otherwise noted)

**Temperature Range:** HEXSEALS: -94°F to +400°F

**Pressure Range:** Exceeds 15 psi internal and 1500 psi external.

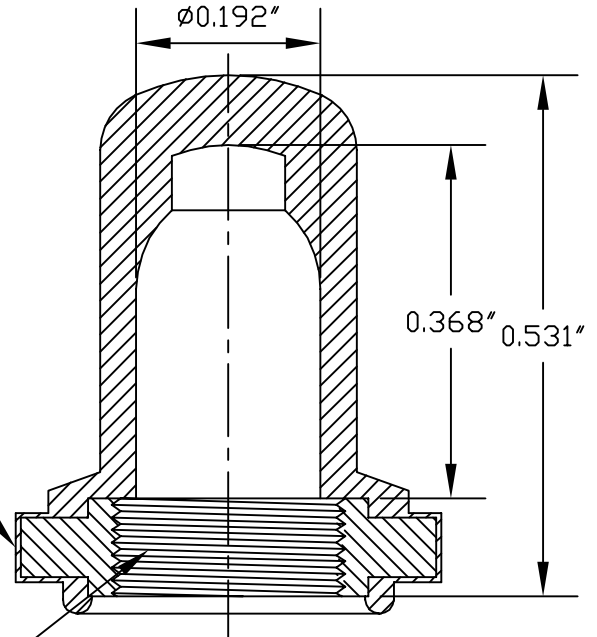
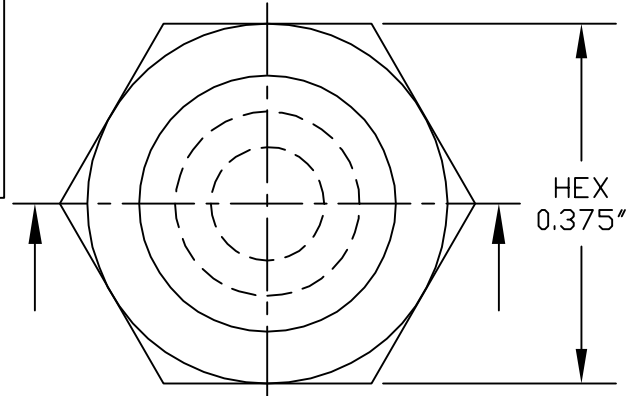
**Operational Life:** 50,000 actuations (minimum).

**Shelf Life:** Excess of 25 years.

**Resistant to:** Salt spray, sunlight, ozone, weather, fungus, and most acids and lubricating oils

**Agency Recognition:** E-SEELS and HEXSEALS are UL-listed to UL Std. 50 types 1-13, and meet CSA standards.

**Installation:** If a reducing adaptor is required - see page 14 of HEXSEAL catalog HEX200 for part numbers and drawing.



1/4-40 NS-2B

K	MAT'L CHANGED and REDRAWN-DRAWING REVISED	09.09.09
J	REDRAWN-DRAWING REVISED- ID ADUSJSTED	09.12.06
I	CAD COMPUTER GENERATED	09.23.02
H	UPDATED, ADDED ORDER NUMBERS, DWG NO. WAS 12/31/SERIES	W.P. 11.24.76
G	UPDATED	R.C. 08.04.24
F	REDRAWN	TONY C. 12.11.69
REV.	DESCRIPTION	DATE
MAXIMUM AND MINIMUM MEASUREMENTS ARE STATED DIRECTLY ON EACH DIMENSION.		
MAT'L: SILICONE RUBBER A-A-59588 CLIII GR60	TITLE: BOOT, PUSH BUTTON (1231/31)	ENG. M.MORSE 01.21.60
FINISH: GRAY		DWN. S.ANDREWS 01.21.60
	APM-HEXSEAL CORPORATION	CHKD. B.GLICKSMAN 01.21.60
		SCALE 5 : 1 DWG. NO. (1231/31) HEXSEAL ®

THIS DRAWING COVERS PROPRIETARY ITEM AND IS THE PROPERTY OF THE APM-HEXSEAL CORPORATION.  
THIS DRAWING IS NOT TO BE COPIED OR USED WITHOUT THE WRITTEN APPROVAL OF AN OFFICER OF THE APM-HEXSEAL CORPORATION.

# Mouser Electronics

Authorized Distributor

Click to View Pricing, Inventory, Delivery & Lifecycle Information:

[APM HEXSEAL:](#)

[1231/31](#)